

Women and Brass: the female brass bands of the 19th and 20th centuries

Gavin Holman – April 2018 (updated December 2020)

Brass bands have been a musical force across the world over the last 200 years. Mainly concentrated in Europe, North America and Australasia, they were predominantly male, and the members were largely working class.

The female brass band is a somewhat rare beast, even today, though it did enjoy a “golden era” during the late 1800s and early 1900s in the USA.



Contents

Introduction	2
Ladies’ brass bands – United Kingdom	3
Ladies’ brass bands – United States of America	10
Damen blas-orchester – German Empire	139
Ladies’ brass bands – other countries	140
List of bands	158
Bibliography	162

Introduction

In this paper are details of some 408 female brass bands - a very small number compared to their male equivalents. For example, I have identified nearly 20,000 brass bands in the British Isles since 1800, but only 25 UK female bands.

Of course brass bands in general did have women as players as well as men, but these female players were few and far between. The male dominance of the British brass band was not really broached significantly by women until the 1950s. Women in USA brass bands were much more common – there appeared not to be the same level of discrimination in America.

The earliest exclusively female bands to appear were those associated with family musical groups in the 1850s and 1860s. Non-familial female bands arrived in the 1870s, and they were particularly popular and readily accepted in the USA.

Many bands were exclusively female, but some had male musical directors and/or the occasional male player. In most cases the quality of musicianship of the players was equal to or surpassed that of their male counterparts and, despite their novelty, were clearly engaged for their performance capabilities rather than the skirts they wore.

A number of bands were professional or semi-professional, appearing on stage, touring with vaudeville troupes, or engaging in concert tours around the country. The majority of the bands were local to one town or county and provided the same entertainment services as their male town band equivalents.

There are many more ladies' bands to discover, particularly in the USA. The distribution of the USA bands below may be somewhat strange – e.g. there are a large number from Kansas – but I suspect this is more to do with the newspaper research resources used than the fact that other states are particularly deficient!

As noted above, the ladies' brass bands were easily the equal of the more numerous male bands, and generally received admiring plaudits on their performance and deportment. The few negative comments found tend to be largely joking rather than misogynistic, and general rather than specific. For example:

The man who is organising a female brass band in Cincinnati says it must be a success, even if they don't learn half as many 'airs' as they practice. [1872]

A California town has a female brass band and, somehow, these players can sit and blow, and blow, for hours at a stretch, and not once get out of breath as a male band would. [1875]

Visitor (in Ruralville): this is a very pleasant and home-like place, and I do not understand why so many families have moved away from it in the past few months, as you say. – Native: You haven't heard our young ladies' brass band yet. [1897]

Ladies' brass bands – United Kingdom

Adamless Eden Ladies Brass Band

Active in 1883 to 1895. A professional band, part of the Adamless Eden comic opera and touring company

Blushing Brass, Verwood, Dorset

[Current band] - Formed in 2016. An all-female brass band based around Verwood Concert Brass' female members



Boobs and Brass, Northamptonshire

[Current band] - Founded in 2006. An all-female brass band arising out of a concert to raise funds for the Breast Cancer Campaign. Consisted of players from around the region, performing a number of charity concerts each year, raising over £210,000. The band will disband after its final concert in October 2018



Cardiff Girls' Brass Band, Glamorgan

Formed in 1941

Church Nursing and Ambulance Brigade Ladies' Brass Band, London

Active in 1915. Formed to advertise the brigade and encourage recruits to join and help support the military hospitals

Cora Corson's Instrumentalists

Active in 1918. A professional touring brass band of American ladies

Cosway Street Women's Brass Band, Marylebone, Middlesex

Active in 1914. This band was located at the Evening Institute for Women in Cosway Street.



Cullen Ladies' Brass Band, Banffshire

Active in 1920. Still active in 1939

Edgware Road Ambulance Association Ladies' Band, London

Formed in 1915, conductor John Reay

Empress Ladies Brass Band, London

Active in 1897. A professional touring band billed as "the greatest novelty of the nineteenth century"

Fife Ladies' Brass Band, Cowdenbeath, Fife

[Current band] - Founded in 2016 by Aileen Russell and Carol Sandell to raise money for cancer charities, with members from brass bands across Scotland

Horsforth Ladies' Brass Band, Yorkshire (West Riding)

Active in the 1870s or 1880s



Monument Church Ladies' Brass Band, London (City)

Founded in 1918. Still active in 1928. The church also housed a cinema at that time to attract worshippers

Norwich High School for Girls' Brass Band, Norfolk

Active in 2014

Nottingham Ladies' Brass Band, Nottinghamshire

Made its first public appearance in September 1920, at the unveiling of a memorial to those 41 men killed in the Great War who resided in Garfield Road, Nottingham. Conductor J.T. Thompson. Still active in 1921

Nottingham Y.W.C.A. Girls' Brass Band, Nottinghamshire

Active in 1922

Pink Bra'ss, Somerset

[Current band] - Formed in 2016. An all-female brass band



Queenswood College Girls' Brass Band, Hatfield, Hertfordshire

Active in 1932, with 45 players



Ramsdale and Long's Ladies' Brass Band

A professional brass band, conducted by Annie Birch, which was formed to accompany the "up to date burlesque" Joan of Arc, as it toured the country in 1900 and 1901. Founded by Edwin Ramsdale

St Helier Girls School Brass Band, Isle of Jersey

Active in the 1970s

Staining Ladies' Band, Lancashire

Active in 1915 - possibly set up while the menfolk were at war?



Trinity Girls Brass Band, Garswood, Lancashire

[Current band] - Founded in 1959 - Former names: Girls Guildry Band, Trinity Girls Silver Band





Women's Land Army Brass Band, London

Active in 1917 and 1918 - it was used to publicise and attract people to the Land Army Enquiry Bureau at 135 Victoria Street.



The Women's Land Army now has a brass band of its own. Here it is playing for recruiting purposes outside the Land Army depot in Victoria-street, London.

Women's Quarry Munitions Workers Band, Buxton, Derbyshire

Active around 1915



Wonderbrass, Cornwall

[Current band] - Founded in 2011 - An all-female brass band based in mid-Cornwall



Ladies' brass bands – United States of America

Abilene Ladies' Brass Band, Kansas

Founded on 29th June 1885, with instruments provided by J.H. Brady. Initial members were: Mrs Charles Crane (1st cornet), Miss Ella Hamaker (2nd cornet), Miss Cora Strother (1st alto), Miss Lillian Armitage (2nd alto), Miss Grace Johnson (2nd alto), Mrs George Seward (1st tenor), Miss Helen Francis (2nd tenor), Miss Homie Strother (baritone), and Miss Rose Howland (tuba).

Akron Ladies Band, Ohio



Albany Young Ladies' Brass Band, Oregon

Active in 1879, 1880, with 12 members

Albion Lady Cornet Band, Wisconsin

Active in 1891 with 18 players. Still active in 1892

Alcryn Ladies' Brass Band, Pittsburgh, Pennsylvania

Active in 1916, conductor Estelle M. Puhl (who was a reputed baritone horn soloist). Associated with the Pittsburgh Lyceum Glee Club managed by J. Nich Puhl

Aledo Ladies' Cornet Band, Illinois

In 1882, a man named Prof. E.D. Wood moved to Aledo, Illinois in 1882 and opened a music store, followed by a Conservatory of Music (\$4 per week with board and use of instruments), where he trained an all-female brass ensemble. The band performed regularly around Aledo and surrounding area, and toured to Burlington, Fort Madison, and Keokuk, Iowa. Wood composed an original piece called "The Ladies Cornet Band March". The band folded when Wood died in 1885

Allendale Ladies' Cornet Band, Missouri

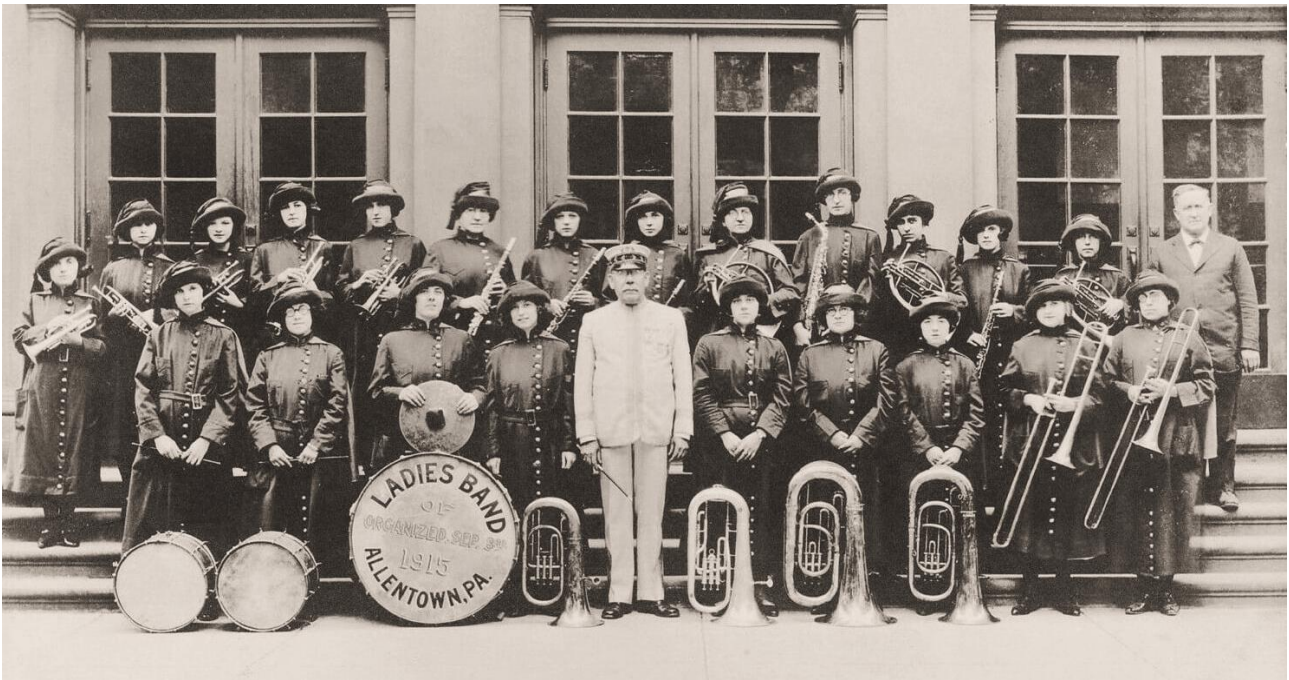


Allentown Ladies' Band, Pennsylvania

Founded in 1915, director Joseph Smith



JOS. SMITH, DIRECTOR.



Altona Ladies' Cornet Band, Illinois

Founded on August 20, 1884, leader John Ekstadt. The members were Addie Shade, Ella Durand, Lydia Tapper, Etta Collinson, Nellie Edwards, Maude Templeton, Mettie Hopkins and Maude Bane

Anadarko Ladies' Cornet Band, Oklahoma

Founded in August 1902

Andrews Ladies' Brass Band, Andrews, Indiana

Founded in 1881 with 15 members. Disbanded in 1886 after weddings and removals reduced the numbers to six. Lulu Cole, Anna Bell and Miss Morris were members in 1884. New uniforms were ordered in August 1884 from the Coleman sisters of Huntington, consisting of full skirts, tight waists, trimmed with gilt braid, brass buttons and cap to match.

Angola Ladies' Cornet Band, Indiana

Active in 1878 and 1902

Annandale Girls' Cornet Band, Minnesota

Founded on 1st May 1906, consisting of 13 girls and 3 boys, conductor M.P. Satterlee, editor of the Annandale Advocate



Antioch Ladies' Cornet Band, Indiana

Active in 1882

Argonia Ladies' Brass Band, Kansas

Founded in autumn 1896. The initial members were: Eva Baughman (cornet), Dollie Harlen (cornet), Nellie Marshall (alto), Alda Kirk (alto), Orpha Newbold (tenor), Lizzie Hadler (tenor), Maude Bates (tuba), Flora Hadler (baritone), Ethel Harper (Bb bass), Utle Kirk (bass drum)

Arkansas City Ladies' Brass Band (1), Kansas

Founded in spring 1905

Arkansas City Ladies' Brass Band (2), Kansas

Founded in August 1913 by Mrs T.G. Cozine. Still active in 1920

Arlington Ladies' Brass Band, Oregon

Founded in 1887

Ashland Ladies' Cornet Band, Kansas

Founded in September 1912, president Emma Wallingford, secretary Mrs Meyers

Ashland Ladies' Cornet Band, Oregon

Founded around 1898 with seven young ladies

Athena Brass Band, Montgomery Village, Maryland

[Current band] - Formed in 2003, by Laura Lineberger, to to perform at the International Women's Brass Conference. An all-female brass band



Athens Ladies Band, Maine



Athens Ladies Band, Ohio

Atlantic City Ladies Band, New Jersey

Active in 1916



Atwood Female Cornet Band, Kansas

Active in 1889 to 1891

Auburn Ladies' Cornet Band, Indiana

Active in 1920

Audubon Ladies' Cornet Band, Iowa

Active in 1888

Baltimore Ladies' Brass Band, Maryland

Founded on 14 March 1902 by Elizabeth Davis, of South Baltimore. Initially consisted of 12 colored women, meeting every Tuesday evening. They were tutored by Alfred Williams and C.L. Harris

Bancroft Ladies' Cornet Band, Michigan

Active in 1890, leader Henry Williams

Barberton Ladies' Band, Ohio

Founded in 1914, conductor Harry Houser. They played free concerts at Lake Anna and represented their city on trips out of town. In 1917 they marched seven miles through Columbus in the inaugural parade for Governor James M. Cox. During World War I, the Barberton Ladies' Band met each incoming train that carried soldiers from all the surrounding towns. In 1922, many of the members of the band were from other communities, so the Ladies' Band moved to Akron, Ohio. At that time it was fully incorporated under the name Famous Ladies' Band. It was disbanded in 1930



BARBERTON LADIES BAND

Barrington Ladies' Cornet Band, Illinois

Active in 1904

Bates Girl Band, Villisca, Pennsylvania

Active in the 1890s



Baxter Springs Ladies' Brass Band, Kansas

Active in 1891, giving a concert to buy new instruments

Beach Ladies' Brass Band, North Dakota

Active in 1915

Beaver City Ladies' Band, Nebraska



Beaver Springs Girls' Cornet Band, Pennsylvania

Active in 1922

Belgrade Girls' Brass Band, Montana

Founded in autumn 1914, conductor Olive Selin

Belle Plaine Ladies' Brass Band, Kansas

Founded in spring 1895, conductor J. Byron Cain,

Benezette Ladies' Cornet Band, Pennsylvania

Founded in 1896. After the previous men's cornet band failed, the ladies appropriated their instruments and set up their own band

Berger Family Female Brass Band, Philadelphia, Pennsylvania

Active in the 1860s and 1870s. Consisted of a troupe of children from 8 to 13 years old (in 1865)

Bertha Meyer's Women's Brass Band, Rochester, New York

Active in 1916, with 15 players

Big B Band, Topeka, Kansas

Active in 1910



Binager Ladies' Cornet Band, Indianapolis, Indiana

Founded in July 1879, conductor George T. Binager. Initial members were: Maggy Surber, Libby Kershner, Maggie Frick, Lizzie Smith, Minny Gage, Laura Black, Florence Sellers, Ella Bills, Kitty Horton, May Morrison, Fanny Wands and Ida Scott.

Blue Springs Ladies' Brass Band, Nebraska

Active in 1894, with 13 members, uniforms of short skirts, white waists and blue visor caps with white bands

Boston Ladies' Brass Band, Massachusetts

Founded in 1890, conductor D.W. Howard. Still active in 1901



Boulder Ladies' Cornet Band, Montana

Active in 1893

Boulon's California Ladies' Brass Band, California

Active in 1883 to 1887. A professional touring band, conducted by Professor Paul Boulon. Consisted of seven members, including Boulon's wife, daughter and two sisters

Bradford Ladies' Cornet Band, New York

Active in 1909

Brainerd Ladies' Band, Minnesota

Active in 1930



Brecksville Ladies' Cornet Band, Ohio

Active in 1915

Brighton Girls Band, Illinois

Founded in 1879, conductor Professor J.B. House, of Alton, secretary Miss Ada V. Scarritt. First public concert on 21st January 1881. It disbanded in May 1881 following the removal of two of its leading members.



Brooklyn Ladies' Band, Baltimore, Maryland

Founded in June 1914, with 26 players, conductor John P. Helmer. Minnie Schatz played cornet in the band. Still active in 1915



Buck Taylor's Famous Cowgirl Band, Willow Grove, Pennsylvania

Associated with the Willow Grove Park



Buffalo Center Ladies' Cornet Band, Iowa

Active around 1900



Burden Ladies' Cornet Band, Kansas

Active in 1913, with 16 players, instructor Professor Gordon

Burlington Girls' Cornet Band, Indiana

Founded in spring 1906, conductor Mrs J.B. Schultz

Burrton Ladies' Brass Band, Kansas

Founded in early 1891

Butler Ladies' Brass Band, Indiana



California Ladies' Band, Los Gatos, California

Founded by Frederick Brohaska in November 1899. Initial members were: Flora Macabee, Mary Macabee, Delia Brohaska, Tillie Brohaska (trombone), Mrs Ora Macabee (bass horn), Miss Rosenberg, Stella Folsom, Julia La Montayne, Rose La Montayne, Miss Halliday, Miss Hoover, Stella Hoard (solo cornet), and Miss Arno. Active in the 1900s in a uniform of white with gold epaulettes. In 1901 they performed for President McKinley when he visited San Jose. Tillie Brohaska played trombone.



Caney Female Cornet Band, Kansas

Active in 1900

Canyon City Ladies' Band, Oregon

Active in 1897, Katherine Livingston played tenor horn





Caro Ladies' Brass Band, Michigan

Founded in spring 1882. However, a newspaper report states there was a ladies' cornet band in the town in July 1879, and it was also active in 1881



Member of Caro Ladies' Cornet Band

Carson Little Girls' Brass Band, Carson City, Nevada

Active in 1876, 1877

Cedar Vale Girls Band, Kansas

Founded in December 1896. Still active in 1907. Original members were Cora Curtis, Myrtle Bishop, Olive Lynch, Daisy Cleveland, Bunnie Cleveland, Nellie Study, Pearl Study, Nellie Brown, Fred Bowhan, Mabel Crocker, Carrie Crocker and Annie Adam.



Chadron Ladies' Cornet Band, Nebraska

Active in 1890

Chagrin Falls Ladies' Brass Band, Ohio

Active in 1896

Chanute Ladies' Cornet Band, Kansas

Founded in 1884. Still active in 1893



Charlevoix Ladies' Brass Band, Michigan

Active in 1883

Checotah Ladies Concert Band, Oklahoma

Also known as Polly's Musical Maids



Cherry Tree Girls' Cornet Band, Pennsylvania

Active in 1924

Chetopa Ladies' Brass Band, Kansas

Founded in early 1887 after an earlier attempt with a boys' band failed

Chuckery Ladies' Cornet Band, Ohio

Active in 1885. Still active in 1886. Two members were Miss Randy Kent and Miss Carson McCloud

Clarkson Bohemian Ladies' Brass Band, Nebraska

Active in the early 1900s. Players were: Emma Storek Hughs, Bessie Odvarka, Spika Dech, Emma Tomes, Rose Severa O'Brien, Emma Vitek Novotny, Vlasta Kastanek Travnicek, Bessie Polansky Spangler, Ida Dusatko Turek, Anna Bos Kareland, Anna Jirovec Jubik. Leader was C. Vyskocil



Clearwater Cornet Band, Nebraska

Active in the 1910's



Clymer Ladies' Brass Band, Philadelphia, Pennsylvania

Active in 1886 to 1888. A professional band consisting of ten members of the Clymer family, including sisters Lizzie, Bella, Laura, Edna, Ferdie, Lulie, Hattie and father "Jake" Ferdie D. Clymer. Also billed as the Clymer Concert and Comedy Company

Coffeyville High School Ladies' Brass Band, Kansas

Founded around 1909 by Miss Early

Colonial Ladies Band, Philadelphia, Pennsylvania



Columbia Christian College Girls' Cornet Band, Missouri

Active in 1913

Columbia Girls' Brass Band, Alabama

Founded in 1895, conductor Arthur Davis. Still active in 1896

Colwich Ladies' Brass Band, Kansas

Active in 1895

Coopersville Ladies Band, Michigan

Active in 1891



Copley Ladies' Cornet Band, Ohio

Active in 1891. Still active in 1892. Members included Ina Arnold (leader and president), Edith Swigart (vice-president), Mabel Coon (secretary), Fern Weeks (treasurer)

Coppock Ladies' Band, Iowa



Corvallis Ladies' Cornet Band, Oregon

Active in 1895. They obtained second prize in a band contest at Albany in July 1895

Cottage Grove Ladies' Brass Band, Oregon

Active in 1906

Council Grove Ladies' Brass Band, Kansas

Founded in summer 1906

Covington Girls' Cornet Band, Pennsylvania

Founded in January 1903. Snare drum played by Esther Williams. Still active in 1906

Dallas City Ladies' Cornet Band, Illinois

Active in 1882

Dan's Female Brass Band, Morrison, Illinois

Active in 1874

Davenport Ladies' Band, Iowa



Davis Ladies' Cornet Band, Douglass, Kansas

Active in 1879, part of the Davis Family Troupe of entertainers. Still active in 1882 (on their 10th annual tour - which assumes they were formed around 1872). It was based in Douglass and toured giving concerts, led by John H. Davis

Dayton Ladies' Cornet Band, Virginia

Active in 1909, with 20 players



Decatur Ladies' Cornet Band, Illinois

Active in 1867, 1868, conductor Major Smith. Toured to New Orleans in February 1868

Defiance Girls' Cornet Band, Ohio

Active in 1919

Delmar Girls' Brass Band, Philadelphia, Pennsylvania

Active in 1901, conductor W.S. Rundler. Katie Ziers, child cornetist, played in the band.

Detroit Women's Cornet Band, Michigan

Active in 1904

Dodge City Ladies' Brass Band, Kansas

Founded in autumn 1892, with 28 members, president Mrs W.E. Hood, vice president Miss Lulu Waters, secretary Lillie Gyles, treasurer Julia Young, directors Emma Bader, Bertha Rath and Lulu Waters.

Donna Ladies' Brass Band, Vermont

Active in 1902, conductor Helen Louise Eaton

Downer College Ladies' Cornet Band, Fox Lake, Wisconsin

Active in 1890

Downs Young Ladies' Cornet Band, Kansas

Active in 1899. Still active in 1902. In 1901 there were 16 players, including Addie White



Dubuque Girls Band

Active in 1923



Dunlap Ladies' Brass Band, Iowa

Active in 1894. Re-organised in May 1895

Durand Ladies' Brass Band, Illinois

Active around 1910. Members included Nora Shakey, Irene Johnston, Arvilla Best, Ethel Feltz, Mae Stilwell, Nell Davis, Mrs. Wood, Pearl Bliss, Sue Waller, and Myrtle McKinley

East Liverpool Girls' Cornet Band, Ohio

Active in 1892, consisting of girls aged 8 to 16. Conductor was William A. Curfman, a "fine musician and enthusiastic Rechabite". The band was associated with the local International Order of Rechabites temperance tent, and toured around the eastern states promoting the temperance message. Their uniform was blue trimmed with white. Reports of their performances were very good, praising their "sweet tones", though one did state "... [it] seems like a brazen invasion of men's most noisome practices".



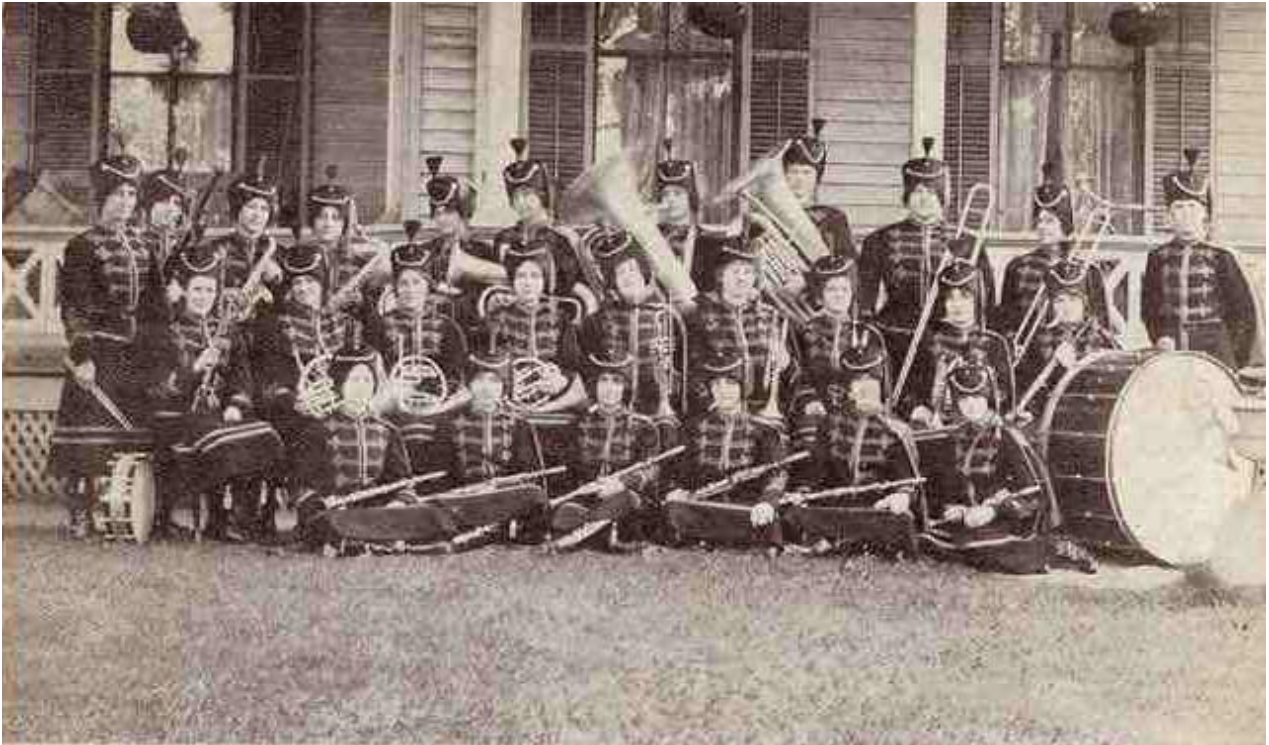
Echo Park Playground Girls' Brass Band, Los Angeles, California

Founded in 1908. Still active in 1909, consisting of 14 girls from 12 to 15 years old. Members included Lizzie Baizer (aged 12, bass drum), Signe Anderson (trombone), Marguerite Williams (cornet), Helen Byram (cornet), Jessie Peck (cornet), Emma Gerlock (alto), Nellie Garland (alto), Mildred Allen (clarinet), Lois Elder (tuba), Nellie Babe (key trombone), Nina Henry (cornet), Margaret Clifford (baritone), Lottie Traynor (slide trombone), Grace Teed (snare drum). There was also a boys' band which occasionally combined with the girls to form a larger ensemble



Edina Ladies Band, Missouri

Active in 1908



Edinburg Ladies' Cornet Band, Indiana

Founded in January 1879. It competed in a band contest in Muncie in June 1879, taking second prize

Edmond Ladies' Band, Oklahoma

Active in the 1900s and 1910s. Neva Wilson played piccolo in the band 1902-1904



Eldora Women's Brass Band, Iowa

Active in 1895. Competed in the 11th annual North-Western Band Carnival at Eagle Grove in 1896

Elizabethtown Young Ladies' Cornet Band, Indiana

Active in 1890, 1891, with 14 players

Ellensburg Girls Band, Washington

Active in 1913



Ellis Ladies' Cornet Band, Kansas

Active in 1891, with at least 10 players

Elmdale Ladies' Cornet Band, Kansas

Founded in June 1903. Initial members were Clara Pangram (drum major), Mrs Davis (solo cornet), Nellie Bishop (solo cornet), Lena Clemens (1st cornet), Hilda Wood (2nd cornet), Ida Jacobs (1st alto), Martha Hampton (2nd alto), Nora Wilt (3rd alto), Clemie Davis (1st trombone), Maud Bishop (2nd trombone), Willie Schneider (baritone), Viola Jeffrey (tuba), Alice Drummond (bass drum), Edna Reynolds (snare drum). Still active in 1904

Emporia Ladies' Brass Band, Kansas

Founded in autumn 1910

Emporia Ladies' Cornet Band, Kansas

Active in 1898. This band consisted solely of "colored" ladies. A successor band was formed in 1910

Erie Ladies' Brass Band (1), Kansas

Founded on 22 February 1887, with players between 16 and 18 years old. Conductor G.R. Clouser. A successor band was formed in 1895

Erie Ladies' Brass Band (2), Kansas

Founded in autumn 1895. Still active in 1896 when its members were praised for their qualifications beyond their musical abilities - being "caterers, elocutionists, actors, orators, declaimers and pugilists"

Escanaba Ladies' Band, (Michigan)

Active in the 1920's



Euterpe Ladies' Cornet Band, Chicago, Illinois

Active in 1881. A professional band, part of the Euterpe Concert Company, who toured in the USA and Canada. Members in 1881 included Lizzie Hawley (Eb cornet), Maud Townsend (Bb cornet), Ada Mertz (Eb alto), Ella Kendall (third alto), Ida Franklin (2nd Bb tenor), Bell Franklin (Eb tuba), Emma Jones (1st Bb cornet), Edith West (solo alto), Kittie Wright (2nd alto), Alta Wright (1st Bb tenor), Nellie Rogers (baritone), May Reed (bass drum), Flora Sprague (tenor drum), Will W. Robertson (instructor and leader). Their uniform was black polonaise with white silk epaulettes, white military braid chevrons on the cuffs, handkerchief pocket on left breast, white silk cord and tassel about the waist, black cashmere skirt, trimmed lightly down the front with white military braid, black Derby hat with white pompom. Members in 1884 were: Lizzie Hawley (Eb cornet), Jessie Smith (Bb cornet), Mamie Wyckoff (1st Eb alto), Flora Leach (2nd Eb alto), Matie Beeson (1st tenor trombone), Minnie Whitney (2nd Bb tenor), Nellie Jennings (baritone), Nellie Piper (tuba), Flora Sprague (tenor drum), Emma McKenzie (bass drum).

Fairfax Ladies' Band, Minnesota

Active in 1910



Fairland Ladies' Cornet Band, Indiana

Active in 1904

Fargo Ladies' Brass Band, North Dakota

Founded in autumn 1904

Faux Girls' Band, Frankfort, Michigan

Active in 1917



Fenton Ladies' Brass Band, Michigan

Active in 1885 to 1889, performing in Chicago and Toronto





First Christian Ladies' Brass Band, Eaton, Ohio

Founded in autumn 1914, conductor Professor J.W. Young, with 15 players

Fitz's Girls Band, Bethel, Ohio



Flushing Ladies' Cornet Band, Michigan

Active in 1885

Fond du Lac Ladies' Cornet Band, Wisconsin

Founded in 1891

Forest City Ladies' Cornet Band, Illinois

Active in 1883, with 17 players

Fort Madison Ladies' Band, Iowa

Founded in 1884, bandmaster Dumayne Wood



Fort Scott Ladies' Cornet Band, Kansas

Founded in 1891

Fort Smith Ladies' Cornet Band, Kansas

Founded in autumn 1899

Fort Wayne Ladies' Cornet Band, Indiana

Active in June 1882 when it performed at an ice cream festival

Fremont Girls Band, Indiana



Fullerton Ladies' Brass Band, Nebraska

Founded in October 1888. Still active in 1890

Galesburg Colored Ladies' Brass Band, Illinois

Active in 1914, 1915

Garden City Female Cornet Band, Kansas

Active in 1887

Geneva All-Girl Band, Nebraska

Active around 1900, bandmaster Silas B. Camp. Members included Ollie Tilzey, Besse Stultz, Tillie Voigtlander, Millie Scott, Blanche Woodworth, Laura Mozee, Martha Putlitz, Carrie Mozee, Addie Allen, Ora Kelly, Martha Sisler, and Mrs Ben Woodworth



Gierk's Ladies Band, Richmond, Michigan

Active in 1913



Glacier Park Girls' Brass Band, Kalispell, Montana

Founded in spring 1918, conductor M.B. Riffo

Gladbrook Women's Brass Band, Iowa

Active in 1896, competing in the 11th annual North-Western Band Carnival at Eagle Grove

Gold Hill Girls' Brass Band, Oregon

Active in 1904, with 14 members, trained by a local physician, J.F. Neilson, with neat blue uniforms. "A large, beautiful St Bernard dog attends them and stands in the midst of the circle while they play, and prides himself on being the faithful admirer and supporter of the band". Still active in 1906



Goldfield Ladies' Brass Band, Iowa

Active in 1903, with 20 players

Goodland Ladies' Cornet Band, Kansas

Active in 1906



Grand Ledge Ladies' Cornet Band, Michigan

Active in 1886

Great Bend Ladies' Brass Band, Kansas

Disbanded in late 1886

Greeley State Teachers' College Girls' Brass Band, Colorado

Founded in 1915, by Professor J.C. Kendall

Greencastle Ladies' Cornet Band, Indiana

Active in 1879

Greenwood Young Ladies' Brass Band, Indiana

Active in 1890, with 15 musicians, conducted by Bertha Creasey. Still active in 1891, conducted by Professor R.B. Rudy

Guttenburg Girls' Band, Iowa

Active in the 1920s, Dule Niemeyer played snare drum



Grove City Ladies' Cornet Band, Pennsylvania

Active in 1896, consisted of Bessie Shortz, Hattie Shortz, Daisy Shortz, Blanche Knox, Cora Knox, Ida McKay, Lillian McKay, Myrtle Black, Eula Black, Stella McCoy, Blanche Gilmore, Myrtle Brandon, Katie Atwell and Retta McCandless

Harrison Brass Band, Maineville, Ohio

Active in 1896. A girls' band consisting of the Harrison sisters and the Murdock sisters principally, nine players in all

Harrison Ladies' Cornet Band, Arkansas

Active in 1906. Members were: Blanche Stewart (cornet), Audra Connerly (cornet), Agnes Newman (cornet), Mary Newman (clarinet), Jo Lockhart (alto), Crissie Caster (alto), Lena Lopp (alto), Addella Attebury (alto), Ida Hines (trombone), Goldie Worthington (trombone), Sada Bunch (trombone), Jennie Frew (tenor), Willard Worthington (baritone), Marilla Caster (Bb bass), Myrtle Penn (Eb bass).

Hart Ladies' Band, Michigan

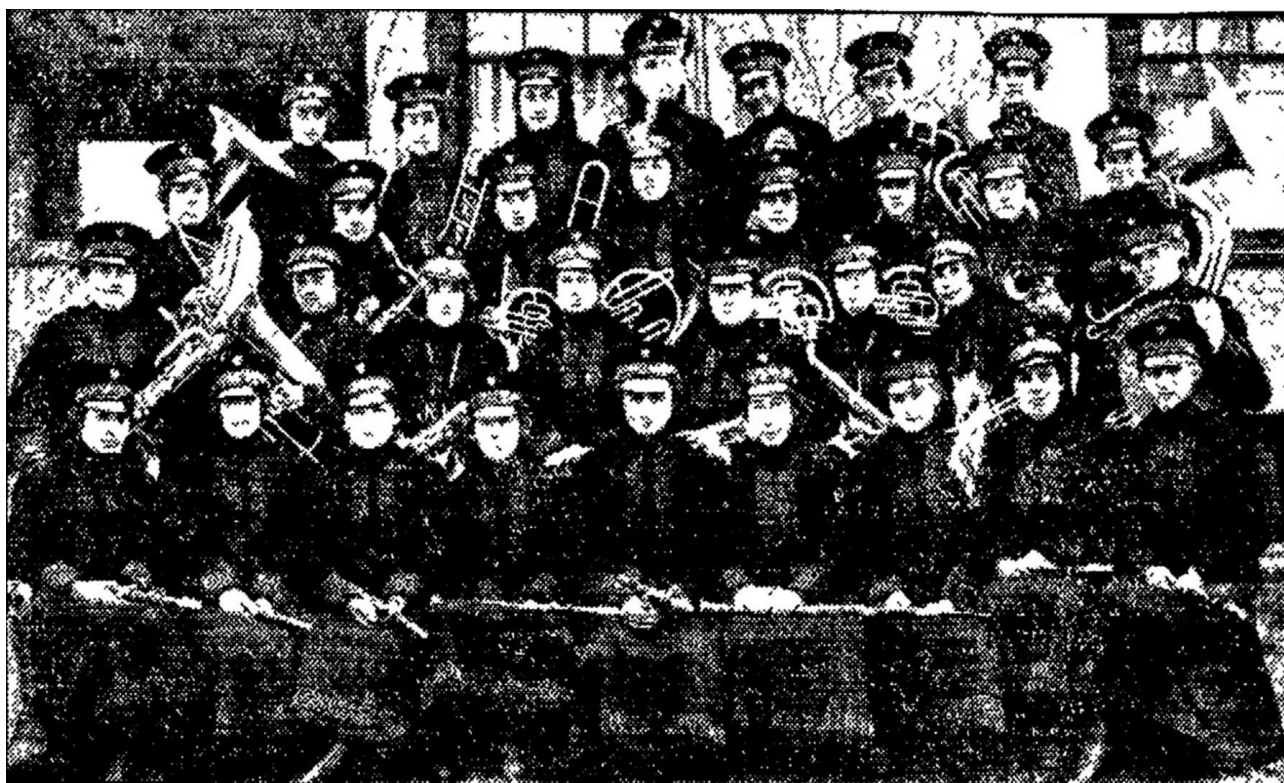
Active in 1893



Hart's Girl Band, Hicksville, Ohio

Local jeweller O. V. Hart put together a band of boy musicians in the early 1900s. Following their wide success, he gathered five of his female music students together in 1915. As the band added more instruments and musicians, its reputation for excellence spread to surrounding counties. With World War I depleting the ranks of the Boys' Band, the All-Girl Band aptly filled the void. Successful street concerts led to requests to ballyhoo area fairs, because Hart's Girl Band always drew a crowd. The full band was formally organised in January 1917. The original members included: Lottie Forder, Florence Blodgett, Leota Voght, Freda Forder, Hazel Hart, Mable Applegate, Beatrice Peter, Esther Smith, Ethel Frye, Berenice Sauers, Freda Peter, Mabel Gueth, Louise Mercer, Esther Howenstine, Ruth Moore, Lela Blodgett, Celeste Enzor, Golda Fullmer, Clinnie Seibert, Ardis Hootman, Algie Walker, Nova Stoy, Leone Richards, Iva Cottrell, Florence Hesack, Frances Kimble, Freda Maxwell, Golda Huber, Bernice Traxler, Elma Bungard, and Gladys Gorrell. 1918 marked their first annual tour. By 1921, twenty-four band members were making yearly tours into different regions of the United States, eventually traveling in a special B & O coach with the band's name on the side. Musicians earned \$40 a week beyond expenses, and held membership in the American Federation of Musicians. Sometimes billed as the Scottish Lassies or the Ohio All Girl Band, they were advertised as being the country's first (and some say only) traveling professional all girl band. During their heyday in the 1920's, Hart's girls crisscrossed

America and Canada's Maritime Provinces. Their venues included state fairs, conventions, Vaudeville theatres, and Murphy's Circus, where they accompanied the acts.





Hastings Ladies' Cornet Band, Nebraska

Founded in February 1889. First public performance at the opera house on 1 February 1890

Helen May Butler's Ladies Brass Band, Boston, Massachusetts

Founded in 1898 as Talma Ladies' Military Band, by conductor Helen May Butler, it was renamed Helen May Butler's Ladies Brass Band in 1901. The band toured extensively throughout the eastern and southern states, becoming based in Cincinnati later in the 1900s. Disbanded around 1913, when it was no longer economical to keep the band on the road. A concert in Philadelphia in April 1901 was: *March - The Billboard (Klohr)*, *Overture - The Wonderful Melody (Mackie)*, *Cornet solo [Emma Wollerscheid] - The Palms (Faure)*, *Selection - A Romance of Athlone (Olcott)*, *Waltz - Moonlight and Starlight (Dubrowski)*, *Trombone solo [Lillian Graves] - Hello Central*, *March - Blaze Away (Holzmann)*, *March - Under the Double Eagle (Wagner)*, *Overture - The Ideal (Daniels)*, *Cornet solo - The Holy City (Adams)*, *Selection - Go Where the Mists are Sleeping*, *Waltz - When the Harvest Days are Over (Von Tilzer)*, *Duo for cornet and trombone - Alice*, *March - The Old Warrior (Barnard)*.







Not Only the Biggest and Best but the Only Permanent Band of its kind in the World.

INCOMPARABLE HELEN MAY BUTLER

AND HER

LADIES' MILITARY BRASS BAND

50 Ladies, 50 Musicians, 10 Soloists, 10 Specialities 30 Voices in Chorus.

5 descriptive novel Numbers and Marches composed by HELEN MAY BUTLER.

HELEN MAY BUTLER,
Sole Prop. and Directress.
H. PHILL SMITH, Assistant.
J. LESLIE SPAHN, Manager.
WM. R. PIKE, Assistant Manager.

The March hit of the Century
"Cosmopolitan America".
by HELEN MAY BUTLER.
Band Parts ready April 1st. Talbert
R. Ingram, Denver, Col.

Our Soloists.
ORA DELPHINE SNEARY,
PRESCILLA WILMOT,
ADELE RE BAUL,
ANGIE MAC DONALD,
VASHTI SMITH,
LIZZIE COFFEY,
EMMA WOLERSHIDE,
SISTERS BARR.

A record that we are proud of is that we have been actively engaged 110 out of 117 weeks on our Musical Merits only, not having appeared in so-called Farce Comedy, Spectacular or Burlesque Companies, where tights or other appurtenances of that nature where any part of our make-up.

Second Season in the South of 24 weeks and return engagement offered in each city or town for next season.

All rights of titles and names of music composed by Helen May Butler have been given to Talbert R. Ingram of Denver, Colo. Any person using the above name on compositions as being composed by her will be prosecuted by said Talbert R. Ingram

We will not contract with parties that have a Union Strike or any thing unfair to the Musical Unions. Address all Mail to
P. O. Box 468, MANSFIELD, MASS., or THE BILLBOARD.

Mention "The Billboard" when answering ads. Mention "The Billboard" when answering ads. Mention "The Billboard" when answering ads. Mention "The Billboard" when answering ads.

Helman's Ladies' Cornet Band

Active in 1884. A professional band, part of Medea Helman's Musical Comedy Company. Members included Medea Helman (cornet), Flora Helman (cornet), little Myrtle Helman (Bb bass)

Hemmerly's Ladies Band, Fostoria, Ohio



Herington Ladies' Band, Kansas



Heppner Ladies' Brass Band, Oregon

Founded in 1896. Still active in 1897



Hoisington Ladies' Cornet Band, Kansas

Founded in summer 1899. Disbanded in September 1901

Holcomb and Robertson's Young Ladies' Cornet Band

Active in 1884. A professional band touring Illinois, Michigan and Wisconsin. A report of a Chicago concert in September 1884 - "Under every disadvantage, a cold, wet and miserable night, and in a strange city, after a 300 mile journey, arriving at a late hour, and having barely time to dress, the young ladies appeared in a pretty and piquant costume, uniform as to color and cut, uniting the feminine and military, a sort of mitigated vivandiere dress, which had a pleasing effect. The concert was a success."

Holyrood Ladies' Brass Band, Kansas

Founded in autumn 1903

Homer Ladies' Cornet Band, Illinois

Active in 1901. Obtained new uniforms in June 1903 - dark blue broadcloth trimmed with gold lace.

Hope Girls' Brass Band, North Dakota

Founded in 1909

Hoskins' Young Ladies' Brass Band, Reno, Nevada

Founded in summer 1892, conductor Professor Hoskins

House of David Girls Band, Eden Springs, Benton Harbor, Michigan

Active in 1910-1913









Howard's Ladies' Band, Boston, Massachusetts

Active in 1896



Hubbard Ladies' Cornet Band, Iowa

Founded in June 1912 by Mrs John Troy, with 14 members

Humboldt Ladies' Brass Band, Kansas

Active in 1884 to 1891. Conductor Professor Redfield in 1891. Teacher Mr Hagee in 1890. Emma Fussman was a player in 1890

Huron Ladies' Cornet Band, South Dakota

Founded in August 1890. Initial members included Anna Wardall, Mary Clark, Nellie Johnson, Mary Bronham, Ella Thomas, Louise Harvey, Daisy Shelton, Unie Milne, Madge Elson, Mary Sterling and Cora Wood.

Hygia Female Cornet Band, Steelton, Pennsylvania

Active in 1885

I.O.O.F. Home Girls Band, Springfield, Ohio



Improved Order of Red Men Women’s Auxilliary Band, Lubec, Maine

Active in 1910. Associated with Cobscook Tribe no. 80



Indianapolis Female Cornet Band, Indiana

Active in 1879, instructor R.L. Carlin. Members included Arthusa Caldwell (cornet, leader), Mrs E.A. Perkins (cornet), Millie Perkins (cornet), Ella Norris (cornet), Ollie Torbet (alto), Ida Kitchell (alto), Lillie Boynton (tenor), Nora Hammond (tenor), Ruth Torbet (baritone), Belle Shonacker (tuba), Lavonie Kackley (bass drum), Mrs H. Barmeier (tenor drum).

Iola Ladies' Brass Band (1), Kansas

Founded in 1884 but disbanded before the end of the year. A successor band was formed in 1885. Report in December 1884 - *"They met, they blew, they parted, never to meet again - in the capacity of a cornet band. It was nice, the music was, but it took too much blowing. They blew the tears into their eyes, and the blood into their heads, while their lips were unrecognisable. They even blew the lamps out every minute or two, Prof. Brasier said, until they got the hang of it. We are sorry, seriously, that the ladies did not persevere longer. They would undoubtedly have developed rapidly into a good band."*

Iola Ladies' Brass Band (2), Kansas

Founded in 1885. Still active in 1893



Gertie Duffy



Sara Taylor



Unknown Iola Band players

Iowa State Normal School Ladies Band, Cedar Falls, Iowa

Founded in 1906



2146 Ladies' Concert Band, Iowa, State Normal, Cedar Falls, Iowa

VEATCH STUDIO

Jackson's Female Brass Band, Newport, Rhode Island

A colored female band, consisting of 15 players, active in 1906, led by E.T. Jackson. At a concert in February 1906 the programme included "*Dusky Rose*", "*Lights of Home*", and "*Home Sweet Home*". The band members were Elsie Lewis, Ruth Gibson, Nannie Gibson, Christine Clarke, Florence Foneville, Gladys Jackson, Bertha Straight, Grace Ballont, Rose Whithead, Fannie Washington, Marie Lucas, Ethel Johnson, Ellen

Pettiford, and Mrs E.T. Jackson. The Jackson's son, at age 11, was an accomplished cornet soloist, who could play seven different musical instruments.

James Liberty Female Band, Philadelphia, Pennsylvania

Active around 1900



Jasper College Girls' Cornet Band, Texas

Active in 1908

Jessie Alton Ladies Band, Hanson, Massachusetts

Active in 1886



Johnson Ladies' Brass Band, Nebraska

Founded in 1910, with 20 players

Kalkaska Ladies' Brass Band, Michigan

Active in 1906, conductor Frances F. Getty



Kate Baker's Ladies' Silver Cornet Band, Gallatin, Missouri

Active in 1887 to 1892. Performing at the Kansas State Fair in Topeka in August 1888, they were billed as giving "*a fine Street Parade and Drill, dressed in gorgeous costumes, headed by the only lady drum major in the world in her lightning drum exercise.*" Leonore Boyd played with the band in 1888 when it accompanied Dr Diamond Dick (George B. McClellan) with his medicine show in Kansas, Nebraska and Iowa. Members of the band in January 1889 included Kate Baker (drum major), Mina Hallett (solo cornet), Alice Baker (trombone), Lillie Baker (alto), Anna Burroughs (cornet), Lenora Boyd (baritone), Lotta de Rose (alto), Alice Richolson (cornet), Nellie Richolson (tuba), Bertha Boyd (tuba), and Dan Baker ("smallest boy musician in the world"). Kate Baker died in August 1892, and the Comedy Company, which had included the Ladies' Cornet Band, was subsequently renamed by her husband Al M. Baker after her seven year old son, Dan Baker



Kenosha Girls' Cornet Band, Wisconsin

Active in 1888

Keota Ladies Band, Iowa

Active in 1910





Kissimmee Ladies' Cornet Band, Florida

Founded in August 1914, with flute, clarinet, three cornets, two altos, baritone, trombone, tuba, bass and snare drums

Knoxville Ladies' Brass Band, Iowa

Active in 1916

Ladies' Columbine Band, Grand Junction, Colorado

Active in 1900, conductor Silas Morley Boyer



Ladies Ideal Band, Lynch, Nebraska

Active in 1890



Ladies Ideal Band, Mauston, Wisconsin

Active in 1888



Ladies Imperial Band, Bozeman, Montana

Active in 1911





Ladies Imperial Band, Chicago Junction, Ohio





Ladies Military Band, Provo, Utah

Active in 1918



Ladies Mountain Echo Band, Ephraim, Utah

Active around 1915



Lake Maitland Female Cornet Band, Florida

Active in 1891, with 13 young ladies

Lakeside Ladies Band, Detroit, Michigan

Active in 1884



Lancaster Girls' Brass Band, Pennsylvania

Founded in September 1908 by Doctor Tschudy. 18 players aged from 10 to 17. Solo cornetist Louisa Helm, ten years old.



Lazelle Female Cornet Band, Kansas

Active in 1880 - part of the Lazelle Comedy Company touring entertainment

Leavenworth Ladies' Brass Band, Kansas

Founded in autumn 1901, organised by the music department of the Ditzell Buggy Company, conductor Professor Wells

Lincoln Ladies' Brass Band, Nebraska

Active in 1876, conductor Professor Arthur Pryor. Still active in 1877. In July 1876, performing at Atchison, Kansas, with a programme including Beauty's Triumph (waltz), F.J. Keller (fantasia), Sweet Home (cornet duet Walter and Arthur Pryor), A Dream of the Ballroom (overture). Their uniform consisted of white dresses covered with gold and silver spangles, with blue and white hats.

Lincoln's Ladies' Band, Williamsport, Pennsylvania

Active around 1913-1916, conductor Harry Lincoln



Linn Ladies' Brass Band, Oregon

Active in the 1900s

Livermore Ladies' Brass Band, California

Founded in September 1898, instructor W.C. Beach, following an initial idea by young cornetist Aggie Dolan. The initial members were Aggie Dolan (cornet), Lillian Taylor (cornet), Maud Callaghan (cornet), Alma Garner (cornet), Lena Philips (alto), Sadie Callaghan (alto), Grace Sanderson (alto), Jennie Weymouth (trombone), Katie Dolan (tenor), Dora Bistarious (tenor), Dora Garner (baritone), Mayme Taylor (bass), Tillie Seeband (bass).

Logan Ladies' Brass Band, Ohio

Founded in autumn 1891

Loogootee Ladies' Cornet Band, Indiana

Founded in 1905, conductor William Bramble, president Cora Yarnell, treasurer Inez Hinton

Lovington Girls' Brass Band, Illinois

Founded in spring 1904. 15 members by December 1904, including Tillie Dawson (president), Zoe Foser (secretary) and Leona Conn (treasurer).

Luverne Girls' Cornet Band, Minnesota

Active in 1891, conductor Professor Stone

Madame Belding's Female Cornet Band, New York

Active in 1885. A professional band which toured various theatres, including the Casino Theater, Rochester. It consisted of 10 ladies, and was advertised with "M'me Belding's \$5,000 Challenge Lady Cornet Band" - whatever that challenge was!

Maddern Family Female Brass Band, New York

Active in 1853 to 1855. A travelling show family band consisting of father Richard Maddern and daughters Louisia, Amelia, Mary, Elizabeth and Emily (7 years old). Assisted by brothers Richard and William

Madison Ladies' Cornet Band, South Dakota

Founded in 1891, with 12 players

Manning Ladies Brass Band, Iowa



Mapleton Ladies' Military Band, Minnesota



Marcus Women's Brass Band, Iowa

Active in 1896, competing in the 11th annual North-Western Band Carnival at Eagle Grove

Marengo Ladies' Cornet Band, Iowa

Active in 1894, leader Emma Leib

Marion Ladies Band, Ohio

Active in 1915, 1916



Marquette Ladies' Cornet Band, Kansas

Founded in early 1897

Melbourne Girls' Brass Band, Arkansas

Active in 1900 to 1912. Also known as IZARD COUNTY LADIES' CORNET BAND

Mendocino Ladies' Brass Band, California

Active in the early 1900s

Meriden Ladies' Cornet Band, Kansas

Active in 1892

Mesa Ladies' Cornet Band, Arizona

Founded around 1894

Meyersdale Ladies' Cornet Band, Pennsylvania

Founded in summer 1914, conductor C.W. Baldwin, with 15 young ladies

Miller's Ladies' Brass Band, Washington DC

Active in 1903

Milwaukee Ladies' Cornet Band, Wisconsin

Active in 1885, performing at the Ashland Skating Rink

Minden Ladies' Brass Band, Michigan

Founded in 1895

Missoula Girls' Cornet Band, Montana

Active in 1902, 1903

Monroeville Ladies' Brass Band, Indiana

Active in 1886

Monmouth Ladies' Cornet Band, Illinois

Active in 1881

Montfort Girls Band, Wisconsin

Active in 1912



Mount Gilead Ladies' Band, Ohio



Mount Pleasant Ladies' Brass Band, Texas

Founded in spring 1913

Mountain Beauties Band, Hendricks, West Virginia

Founded in summer 1898, with 12 players, instructor Professor Herber Baker. The members in April 1899 were: Mary Harper (1st cornet), Grace Craver (cornet), Flodie Ray (cornet), Frankie Beigler (cornet), Addie Craver (baritone), Edna Beigler (1st tenor), Pearl Craver (2nd tenor), Tracy Bowman (1st alto), Fannie Craver (2nd alto), Gertrude Craver (tuba), Lottie Craver (bass drum), Nina Craver (tenor drum). In 1901 it consisted of the Craver sisters, 8 players in all

Murdock Academy Ladies Band, Beaver, Utah



Navassar Ladies Band

A travelling band active in 1904 to 1918, conductor Augusta (Gussie) G. Dial, manager Eugene Dial, with 40 players. Members included Louise Horne (cornet soloist), Lillian Sieger (cornet soloist), Ida Reiter (trombone), Jean Johnson and Marian Gibney (both from Indianapolis), Ethel Kyle (trap drum) of Cleveland, Ohio, Blanche Johnson (trombone) of Cincinnati, Nellie Mae Hoon (cornet soloist), Charlotte Gary (trombone), Vivian Hutchings (cornet). Eugene Dial recruited young girls from various locations in the USA who showed musical talent, trained them, and added them to his band. Some were as young as 8 to 10 years when they began instruction with Dial. Lillian Sieger was a cash girl, aged 12, in a big department store in St Louis when Dial heard her musical talent. The band received a fee of \$1,500 for appearing for a week at the Hippodrome, Waterbury, Connecticut. In 1909 they appeared in San Francisco, at Idora Park, Oakland in June, the Winnipeg Industrial Exhibition, Canada, in July. The Idora Park concerts featured “a spectacular rendition of Verdi’s Anvil Chorus, with electrical effects, overtures from Cinderella and Die Fledermaus, Schubert’s Serenade, and airs from the comic operas of the day, including Mlle. Modiste.” Plans were made for the band to be a permanent fixture during the Rock Island Exposition, Illinois, in August 1909, with a purpose-built bandstand for them.





Ness City Ladies' Cornet Band, Kansas

Founded in 1901. Gave its first public performance on Friday 1st November 1901

New Orleans Minstrels Ladies' Cornet Band

Active in 1875. A professional band, part of the touring "New Orleans Minstrels", which included the cornetist star Nellie Gorton

New York Ladies' Brass Band, New York

Active in 1892. Associated with the New York Champion Ladies' Baseball Club, and consisted of 15 players. Their business representative was Charles L. Young. The band played at a match between their baseball team and the male team at El Dorado, Kansas in September 1892

Newport Ladies Band, Maine



Nocona Girls' Brass Band, Texas

Active in 1904



Norcatur Ladies' Brass Band, Kansas

Founded in 1887

Norman Ladies' Brass Band, Oklahoma

Founded in 1892

North Shenango Ladies' Cornet Band, Pennsylvania

Active in 1911

North Topeka Young Ladies' Brass Band, Kansas

Founded in 1878. Still active in 1890

Northwestern University Ladies' Brass Band, Evanston, Illinois

Active in 1891, conductor Professor Hutchins

Oak Grove Girls Band, Massachusetts



Oak Grove Ladies Independent Band, Michigan

Active in 1910



Oberlin Ladies' Cornet Band, Kansas

Founded in early 1891. Still active in 1903

Olean Ladies' Cornet Band, New York

Founded in 1883

Olmitz Ladies' Brass Band, Kansas

Founded in January 1894, conductor Edward Baier. Initial members were Carrie Kaiser, Minnie Nordman, Anna Juttner, Lina Kreisel, Jallie Hoffman, Anna Brand, Lina Patterneck, Anna Zoth and Dora Nordman

Onalaska Ladies' Brass Band, Wisconsin

Active from 1886 to 1897. Consisting of 13 ladies, the conductor was Will Schall. The band was famous for "their vivacious ability, toe-teasing harmony and natty uniforms". The uniforms had come from Chicago, and were of green broadcloth with black braid across the front of the jackets fastened with "frogs"; on the shoulders were epaulets trimmed with black fringe and on the green mortarboard caps were black braid and black tassels; the skirts of the uniforms were short, reaching just to the tops of the high shoes. The ladies sat on the city band wagon (left over from an earlier band) - which had seats along the sides and two raised seats at the back with steps to climb up to reach them. Either two or four horses were used to draw the wagon. The ladies were: Lula Aiken Gleason, Lottie Molton Goyette, Katherine Perro, Ada Pooler Knudtson, Anna M. Aiken, Della Newell Aldrich, Fanny Felzer Osborn, Jennie Aiken Schall, Mamie Felzer, Matilda Otterson Herlocker, Cara Otterson Horner, Edna Nesbit Newell, and Carrie Gleason.

Opelousas Academy Ladies' Brass Band, Louisiana

Founded in April 1899, conductor Professor R. Mayer, associated with the St Landry Academy. Still active in 1901. Initial members were Alice Latour (Eb cornet), Olympia Laas (cornet), Clemmy Chachere (cornet), Pearl Charchere (cornet), Heloise Charchere (cornet), Hattie Terwilliger (flugelhorn), Mrs F.L. Chachere (french horn), Emily Latour (Eb alto trombone), Mattie Shute (Eb alto trombone), Kit Mudd (Bb tenor trombone), Constance Meginley (baritone), Irene Shute (Bb bass), C. Mornhinveg (tambourine/triangle) and Mr A.C. Styles (assistant leader). Other members in April 1900 were Isola Fontenot (Bb cornet), Helen Taylor (Bb cornet), Ladia Sandoz (Eb alto), C. Dupre (Eb alto), Rosa Del Buono (Bb tenor), Nita Veltin (baritone), Lorena Mornhinveg (Eb bass), and B. Mornhinveg (snare drum). There were 18 members in June 1900.

Opp Ladies' Cornet Band, Alabama

Active in 1914

Orton Brothers Ladies' Silver Cornet Band, Wisconsin

Active in 1868

Oshkosh Ladies' Cornet Band, Wisconsin

Active in 1885

Oswego Ladies' Brass Band, Kansas

Active in 1871, conductor Professor Wells. Members included: Nellie Hosley, Belle Wells, Jennie Marks, Emma Webb, Carol Grouse, Eva Bridgman, Miss Bolwine and Dick Waskey.

Oxbow Ladies' Silver Band, Oregon

Active in 1908



Oxford Ladies Band, Kansas



Palmer and Snelbaker's Female Cornet Band, Michigan

Active in 1882. A professional touring band with 16 players - part of the Palmer and Snelbaker "Celebrities" troupe, which also included a male band of 12 players

Pembleton's Ladies Martial Band, York, Nebraska



Perkins Ladies' Band, Guthrie, Oklahoma

Active in the 1900s. Members in 1906 were: Essie Williams, Ola Johnson, Mable Ratliff, ? Carpenter, Leona Wagner, Buela Huffman, Bertha Carpenter, Grace Florence Sillix (cornet), Rose Williams, Nina Stansbury, Edith Williams, Matty Stansbury, Dr. Furrown, (bandmaster), Maud Valil, Laura Jones, Stella Fulwider, Blanche Wagner, Grace Mathias, Maealine Harding, Ada Belle Sillix (euphonium), and Vera Sutherland



Peru Ladies' Cornet Band, Nebraska

Active in 1890

Petersen's Imperial Ladies Band, Pipestone, Minnesota

Active in 1908



Phillipsburg Girls' Band, Kansas

Active in 1890



Pipestone Indian School Girl Band, Minnesota



Pitcher's Ladies Brass Band, Chicago Junction, Willard, Ohio



Point Arena Ladies' Brass Band, California

Active in 1911



Polk Mental Institution Ladies Band, Polk, Pennsylvania

Active in 1920



Portland Ladies' Cornet Band, Oregon

Founded in November 1880 with 12 members

Postville Ladies' Band, Iowa



Prairie du Sac Ladies Brass and Reed Band, Wisconsin

Active in 1913





Prairie du Sac Girl Band



PRAIRIE DU SAC, WIS. LADIES BRASS & REED BAND.

Pratt Ladies' Band, Kansas

Active in 1890. Leader Mrs A. Miller. Lela Neff was a member of the band. Conductor C. McMurray in 1891

Pulaski Heights Girls' Brass Band, Arkansas

Founded in spring 1911 by Hugh Phelps. The initial members were Maude Messenger, Clara Messenger, Maude McKay, Blanche McKay, Marguerite Smart, Mary Smart, Elizabeth Welch, Gladys Welch, Marie Eick and Lida Witherspoon. Also known as Little Rock Girls' Brass Band

Racine Ladies' Cornet Band, Wisconsin

Active in 1898

Randles Ladies Band, Walden, New York

Active in 1911



Randolph Ladies' Brass Band, Wisconsin

Active in 1908



Reading Ladies' Imperial Band, Michigan

Active around 1910, conductor Simeon J. Whaley. His daughter Rae Whaley played tuba









COPYRIGHT 1915
D.S. KELLY



Red Cloud Ladies' Cornet Band, Nebraska

Active in 1892

Red Lodge Ladies' Brass Band, Montana

Active in 1907



Redlands University Women's Band, San Bernadino, California

Active around 1910, Gertrude Matthis played euphonium



Rentz's Ladies' Brass Band, Illinois

Active in 1880, 1881. A professional ensemble associated with Madame Rentz's Company of touring artistes

Richmond Ladies' Brass Band, Michigan

Active in 1888 to 1893, conducted by Theodore Miller and included his daughters Nellie and Anna

Rifle Ladies' Band, Colorado



Risingsun Ladies' Concert Band, Ohio

Active in 1913



Rock Port Ladies' Cornet Band, Missouri

Active in 1890, when the members included Mamie Harrington, Cora Erb, May Sly, Minnie Laney, Cora Lee, Julia Newell and Lou Hunter. Still active in 1898, with 15 players

Rock Valley Ladies' Brass Band, Iowa

Founded in summer 1895, first public appearance on Tuesday 10th September 1895. Still active in 1897, with 15 players

Roseburg Ladies' Brass Band, Oregon

Founded in 1891

Roulette Ladies' Cornet Band, Pennsylvania

Active in 1905. Members included Laura Lyman, Maude Sullivan, Mrs Weston, the Meyers sisters, Josie Fulnecky, Flossie Raymer, Grace Cullen and Lizzie Sullivan

Roy Graves Canning Company Ladies Band, Sheridan, Oregon



Russell Ladies Band, Manitoba, Canada



Ruthven Ladies' Cornet Band, Iowa

Active in 1906

St George Ladies' Cornet Band, Utah

Active in 1909

Salina Ladies' Brass Band, Kansas

Founded in summer 1885

Sandyville Ladies' Brass Band, Ohio

Active in 1924

Santa Ana Ladies' Brass Band, California

Founded in autumn 1891

Saybrook Ladies' Cornet Band, Illinois

Active in 1891

Scandia Ladies' Cornet Band, Kansas

Active in 1888

Scranton Ladies' Brass Band, Kansas

Active in 1892, giving a concert to buy new instruments

Sedan Ladies' Cornet Band, Kansas

Held their first practice on Monday 15th June 1908, bandmaster A.G. Hockett. Initial members were Myrtle Sharp, Theresa Pattison, Viola Jameson, Lula Buckles, Nellie Cook, Nettie Huffman, Maude Stough and Mrs William Wyckoff.

Sedgwick Ladies' Cornet Band, Kansas

Active in 1890

Seward Ladies' Silver Cornet Band, Nebraska

Active in 1884 and into the 1890s. Contemporary with their male counterpart - the Seward Silver Cornet Band



Shenandoah Valley Women's Brass Band, Virginia



Sheldon Ladies' Cornet Band, Iowa

Active in 1891

Sheppards' Golden Band, New York, New York

Founded in 1918, by Mrs Julia Ward of 238 Highland Avenue, with 20 female players

Sibley Ladies' Cornet Band, Iowa

Founded in 1891

Silver Tone Ladies' Cornet Band, Espyville, Pennsylvania

Active in 1914

Smith Center Ladies' Brass Band, Kansas

Founded in 1885, leader Miss Hillyer

South Onondaga Ladies' Brass Band, New York

Active in 1904

Spaulding's Ladies' Cornet Band

Active in the 1870s and 1880s. A professional touring band, with 12 members, conducted by Georgie Dean Spaulding, a famous "Gold Cornet" soloist and harpist. Part of the Spaulding's entertainment company, managed by W.P. Spaulding, which also featured "Spaulding's Bell Ringers". Also known as Spaulding & Robertson's Concert Company Young Ladies Band. Nellie Daniels was cornetist in 1873.



Springfield Ladies' Cornet Band, Oregon

Founded on 7th June 1879, conductor J.H. Brown

Stanselle's Ladies' Brass Band

Active in 1898. A professional band, which toured the USA as part of Stanselle's Speciality Sensation, led by "Little" Dextrina Durand, the "smallest band leader in the world"

State Teachers College Girls Band, Jackson, Mississippi

Active in 1924



State Training School for Girls Band, Chalkville, Alabama



Stillwater Ladies' Cornet Band, Oklahoma

Founded in May 1896. The band consisted of Nora Talbot, Myrtle Talbot, Hattie Kirby, Lilly Rices, Gertrude Andrews, George Talbot, Amos Talbot and J.P. Talbot (father of four of the band). The ladies wore blue caps, red waists and blue skirts.

Stockton Ladies' Cornet Band, Kansas

Founded in 1891, with 9 players

Stoneboro Ladies' Cornet Band, Pennsylvania

Active in 1901

Storm Lake Ladies' Band, Iowa

Active in 1896



Strum Ladies' Band, Wisconsin

Founded by sisters Lydia Dahl and Malena Robbe in 1915. Still active in the 1920s. Members in 1916 were: Delia Anderson, Malena Robbe, Lydia Dahl, Manda Dahl, Gertie Myhers, Clara Rekstad, Blanch Anderson, Emma Pace, Mrs Bill Boyd, Mabel Borreson, and Mrs Leland Hogue. Conductor John Judge in 1918



Sunflower Girls' Brass Band, Effingham, Kansas

Active in 1902, 1903, with 20 players

Sunflower Women's Band, Cherryvale, Kansas



Sycamore Ladies' Concert Band, Ohio

Active in the 1910s. Members included: Wanda Gault, Erma Davis, Julie Babcock, Mary Brown, Naamah Ludwig, Esther Davis, Josephine Davis, Cleo Wilson, ? Shaffer, D. J. Gault, Bonnie Dunbar, Neva Yambert, Earl Berry (conductor), Wynema Mesnard, Alice Vance, Florence Davis and Zoe Griffith.



Tekamah Ladies' Cornet Band, Nebraska

Active in 1892

Tempe Ladies' Cornet Band, Arizona

Active in 1893. Disbanded in 1911. Members in 1894 were May Austin, solo cornet; Bettie Gregg, first cornet; Hortie Frankenberg, second cornet; Mrs. Bruce, cornet; Mrs. Dr. Brack, first alto; Bertha Wilson, second alto; Mrs. Spanger, first tenor; Julia Melton, second tenor; Georgie Holmesly, tuba; Bertha Ridenour, first bass; Hattie Ridenour, snare drum; Mamie Griffith, base drum; George Emmett, conductor. Musical instructor was Professor Max Hester



Ticonderoga Ladies' Cornet Band, New York

Active in 1895

Tilford Studios Ladies' Brass Band, Emporia, Kansas

Founded in January 1928

Tipton Ladies' Cornet Band, Indiana

Founded in 1879

Toledo Ladies' Cornet Band, Illinois

Active in 1904

Trinity Ladies Band, Joliet, Illinois



Udall Ladies' Band, Kansas

Active in 1909, members were: Mr. Kelsey (bandmaster), Blanch Rutter Allen, Flora Miller Brewer, Blanch Hammond Johnson, Hazel Kiser Dale, Ella Hoop Gray, Marie Beebe Effner, Effie Greenland, Agnes Miller, Edna Carlton Davidson, Elinor Beebe, and Lucille Greenland Kuhn. Still active in 1914





Ukiah Ladies' Band, California

Active in the 1910s. Jennie Briggs played euphonium c.1914

Ulysses Ladies' Cornet Band, Nebraska

Active in 1892, when it won first prize banner at the Curtis (NE) G.A.R. reunion

University of Kentucky Ladies Band, Kentucky

Active in 1930



University of Oregon Ladies' Band, Eugene, Oregon

Active in 1918. Members were: Jeanette Calkins (saxophone), Katie Dobie (piccolo), Florence Riddle (clarinet), Isla Gilbert (clarinet), Ann Appel (clarinet), Teresa Cox (clarinet), Eva Hansen (clarinet), Vivian Chandler (clarinet), Anna Beck (clarinet),



Margaret Mansfield (tuba), Daisy McCloskey (tuba), Caroline Taylor (alto), Evelyn Smith (alto), Claire Gazley (alto), Marian Bowen (alto), Mildred Black (bass drum), Ruth Sweeney (snare drum), Adrienne Epping (snare drum), Wanda Brown (slide trombone), Mrs Peal (baritone), Mary Hitt (cornet), Greta Didings (cornet), Beatrice Thurston (cornet), Frances Wiles (cornet), Leona Masters (cornet), Era Godfrey (cornet), Hester Hurd (cornet), Mamie McCloskey (cornet).

U.S. Ladies' Military Band



Utopian Ladies Band, Belleville, Wisconsin

Active in 1906, 1907





Valentine Ladies' Brass Band, Nebraska

Founded in 1899, conductor Clarence Sageser. Still active in 1901. The band consisted of Mabel Ashburn (tuba), Ada Stinand (Bb bass), Lulu Hooton (baritone), Emma Carlson (1st tenor), Sarah Simpson (2nd tenor), Elsie Sherman (solo alto), Zaida Elliott (1st alto), Gertrude Moon (2nd alto), Alta Starr (Eb cornet), Myrtle Pettijohn (solo Bb cornet), Jessie Sageser (1st Bb cornet), Ada Evarts (2nd Bb cornet), Mabel Hahn (snare drum), Addie Hornback (bass drum)

Verdon Ladies' Brass Band, Nebraska

Founded in early 1890, consisting of the principal members of the high school

Vine Grove Young Ladies' Brass Band, Kentucky

Active in 1912 with 16 players

W.B.A. Ladies' Brass Band, Houston, Texas

Active in 1922, consisting of 17 members of the Review 58 W.B.A.

Walnut Ladies' Brass Band, Kansas

Active in 1891. Still active in 1895. Members in 1894 were P.E. Bonifas (cornet, leader), Glenn Swain (1st alto), Anna Curtis (2nd alto), Laura Doub (tenor), Maggie Collins (baritone), Pearl Swain (tuba), Angie Ewing (snare drum), Alma Doub (bass drum).

Washington Ladies' Cornet Band, Utah

Active in 1909

Waterloo Ladies' Cornet Band, Indiana

Founded in autumn 1898, Ella G. Reed (president), Elda Mills (vice-president), Matie DeLong (secretary), Lela Sparks (treasurer). Still active in 1902

Watertown Ladies Band, Minnesota

Active in 1908, with 28 players. Members included Hattie Heck, Emma Schwartz, Ethel St. John, Agnes Barth, Ada Halgren, Lillian Teas, Viola Hohman, Lorena Pierson, Mrs. Winterquist, Isabelle Crowley, Zadie St. John, Lizzie Schwartz, Mrs. Wallace, Deloris Boylan, Anna Schwerta, Julia Holmberg, Mabel Barber, Marie Gavin, Mae Schwartz, Ethel Bader, Gladys Swanson, Mabel Pierson, Justine Gunberg Pierson, Beatrice Barth, Gertrude Burke, Eileen Boylan, Ruth Van Krevlan and Myrtle Millford. Still active in 1917



Waterville Ladies' Brass Band, Kansas

Founded in 1877. Still active in 1891

Wattsburg Women's Brass Band, Pennsylvania

Active in 1895

Weaverville Ladies' Brass Band, California

Founded on 16th April 1900 as the Ladies' Eltapome Band, instructed by A.L. Paulsen (leader of the Weaverville Cornet Band). Still active in 1950. Initial members were Lucy M. Young (baritone), Adel McMurray (cornet), Nors Dannenbrink (Bb bass), Ethel Woodbury (alto), Edna E. Paulsen (cornet), Mamie Weinheimer (alto), Clara M. Flagg (cornet), Vera Goodyear (bass drum), Clara Harvey (tuba), Ella Benton (cornet), Addie F. Noonan (cornet), Sadie E. Leonard (trombone), Flora Heath (tenor), Irene Arguello (snare drum), Agnes Weinheimer (alto). Later additions to the band were Edith Mahoney, Idell Laingor, Ida Laingor, Josie Gilzean, Jennie McElroy, Nora Blaney, Rose Blaney, Irma Goodyear, Ruby Whitmore, Helen Leonard, Lucy Yount, Gladys Meyer, Myrtle Skinner, Birdie Gates, Robbie Mahoney, Grace Mahoney, Pauline Paulsen and Vera Hutchins.

Weeping Water Ladies' Cornet Band, Nebraska

Founded in April 1888, with 11 players, conductor Mr Boone. Members included Myrtle Barnes (aged 14), Mabel Swearing (aged 11).

Wellington Girls Band, Kansas

Active in 1914



Wellston Ladies' Concert Band, Ohio

Active in the 1900s



Grand Concert at 1:00 p.m.

DAIN DAY---May 3, 1913

By Wellington Girls Band

BAILEY

GARRINGTON & Son, Wellington

Wellsville Ladies' Brass Band, Kansas

Active in 1886 and 1904

West Branch Girls' Cornet Band, Iowa

Active in 1926

Wetmore Ladies' Brass Band, Kansas

Active in 1901 to 1903

Weyerbacher's Ladies' Brass Band, Evansville, Indiana

Founded in June 1907, conductor A.V. Weyerbacher. Initial members included: Mollie Otto, Sibyl Runyon, Sadie Diehl, Anna Koehlinger, Tillie Diehl, Beatrice Cook, Bertha Osborne, Anna Specht, Lottie Osborne and Ganel Runyon.

White City Ladies' Band, Kansas

Founded in July 1907, conductor Cordelia Thornley, a music teacher. Active into 1910s, with conductor Alfred Musgrave. Mamie Musgrave played tuba, Edna Irene Warneke played bass drum. It gave its inaugural concert in the White City Opera House on 7 April 1908.





Whitehall Ladies' Cornet Band, Michigan

Active in 1887

Wienland's Ladies' Cornet Band, Hope, Indiana

Active in 1879

Williamson Ladies Brass Band, Oregon



Williamston Girls Band, Michigan

Active in 1909 to 1912



Willits Ladies' Brass Band, California

Founded in August 1905, conductor Professor Edward Ball, assisted by J.J. Keller. Initial members were: Edith Steinbrun (president), Eula Taylor (cornet & secretary), Della Shimmin (manager), Mabel Saxon (trombone & librarian), Mrs McPeak (treasurer), R.E. Shimmin (corresponding secretary), Mabel Crockett, Hazel Blosser, Delia Shimmin, Hattie Frost, Georgie Steinbrun.

Willshire Ladies' Cornet Band, Ohio

Active in 1884, consisting of D.W. Shaffner (Eb cornet), Hila Vance (1st Bb cornet), Nettie Koeppel (2nd Bb cornet), Maggie Knott (Eb alto), Leonore Patterson (Bb tenor), India Riker (Eb tuba), Z. Edith Croninger (side drum), Emma Richter (bass drum), Annie Richter (cymbals) - average age less than 14 years. Still active in 1885, performing in Monroeville

Wilmar Girls' Cornet Band, Arkansas

Active in 1909

Winfield Ladies' Brass Band, Kansas

Founded in 1889

Winston-Salem Ladies' Brass Band, North Carolina

Founded in July 1907, conductor Professor Grouse (MD of Winston Cornet Band)

Yates Center Women's Brass Band, Kansas

Active in 1890 to 1892

Yeoman Ladies Band, Muscatine, Iowa



YEOMAN LADIES' BAND, MUSCATINE, IOWA.

Young Ladies Cornet Band, Claro, Michigan



Zays Ladies Band, Bowerston, Ohio



Unknown Girls' Band, Georgia



Unknown Girls' Band, Pennsylvania



Unknown Ladies' Band



Unknown Ladies' Band



Damen blas-orchester – German Empire

Travelling musicians and entertainers had been a part of European life for centuries, taking part in town fairs, pageants and being engaged for shows and circuses. In the German speaking countries of Europe in the 1890s through to World War 1 there appeared a large number of “*Damen Kapellen*”, troupes of entertainers: brass/wind ensembles, string “orchestras”, salon “orchestras”, singing, dancing and theatre variety groups. These largely consisted of women, usually led by a man, and occasionally including males as players. These were professional groups and performed in theatres, as part of larger variety and vaudeville programmes, also at various concert venues in town and countryside.

The brass ensembles were particularly popular in some environments – e.g. restaurants and outdoor events – where their music could be heard over the background noise. These brass groups had their origins in the military bands of the early 19th century which included woodwind and brass instruments, the brass being increasingly dominant as the instruments evolved, using piston valves and more efficient manufacturing techniques.

The female brass ensembles were generally known as “*Damen Blasorchester*” or “*Damen Trompeterkorps*” and consisted of a variety of instrumentalists, almost exclusively brass (though some groups did double up on stringed instruments, drums or handbells - for example). In addition to their instrumental playing they would sometimes also sing and dance and go through various costume changes as part of their performances. Fanfare trumpets were a feature of some ensembles.

The music performed ranged from the popular tunes of the day, military marches, and “salon music” to sophisticated arrangements of classical and operatic works. These were written and transcribed by the members, though perhaps more usually by the male “*Director*” of the ensemble.

The groups were largely from the lower-middle artisan class, often from families of musicians, varying in age from children (sometimes exploited as child prodigies) to married or unmarried women. For those that were based around a family, the father usually took the role as “*Kapellmeister*” with mother, daughters and occasional son included. The senior male member would generally conduct the business aspects of the group. Other relatives and friends/neighbours made up the ensemble. Most groups, however, had members that were unrelated and these were formed through adverts in the press or through loose associations in local communities.

More details and pictures of many of these female brass groups can be found in my paper: “*Damen und Damen - Ladies’ professional travelling brass ensembles of the German Empire 1871-1918*”, available from <https://gavinholman.academia.edu>

The most significant research work in this area is Dorothea Kaufmann’s book “*...routinierte Trommlerin gesucht*”. This covers the whole range of women’s entertainment groups in the period 1860-1930, and gives detailed accounts and analyses of the social, political, artistic and economic environments in which they performed.

Ladies' brass bands – other countries

AUSTRALIA

Austral Lasses' Brass Band

A Salvation Army ladies' band, active in the 1900's





Brisbane Ladies Coronation Brass and Reed Band

Active in 1940





Burra Cheer-up Girls Brass Band, South Australia

Founded in November 1915. After the majority of the local bandmen enlisted for overseas service, the district was unable to muster sufficient men to fill their places, so the women of Burra stepped forward. They took on the challenge of learning at least two tunes to welcome every returning soldier at the local railway station, and became known as the Burra Cheer Up Ladies' Brass Band. Their conductor, James Bentley, was pleased with the women's progress despite the fact that the poor state of some of the instruments stalled their efforts. With new instruments and just a month's practice, they made their first public appearance at the Exhibition Camp Concert Party with a performance of 'Templemore', on February 19, 1916. The band continued through until their final performance at the Violet Day Service held on July 11th, 1920. Gaining confidence, expertise and a wider repertoire, the band was soon in demand, playing at all the local events and in surrounding towns. Their ability earned them the honour of leading an Adelaide march in 1917, and being capable horsewomen they could also, if required, perform as a mounted band. Such was their reputation that, in July 1920, the band was asked to take part in the celebrations attended by the Prince of Wales and the War Workers' Welcome Demonstration at the Exhibition Building in Adelaide. The band's final performance was at the annual Violet Day fundraiser later that month.



Clare Girls' Band, South Australia

Active in 1914 to 1918, conductor Leonard Stacy





Largs Orphanage Girls' Brass Band, South Australia

Active in 1921

Silver City Ladies' Brass Band, Broken Hill, New South Wales

Founded in 1940. The initial players were: Misses M. Turnbulll, M. Davey, I. Williams, E. Elder, D. Raven, B. McInerney (secretary), P. Pelgrave, L. Davey, E. Roberts, M. McLennon, J. Martin, E. Horton, S. Gurney, P. Williams, Betty McAvaney, P. Clayton, J. McCuish, S. Wallis, O. Anderson, M. Lord, C. Clinch, M. Brugeaud, P. Turley, B. Hosking, M. Stephenson, B. Scown, H. Cates, G. Carnie, E. Kite, K. Lund, G. Allen, I. Samuelson (treasurer), G. Stevens, M. Anderson, M. Pelgrave, A. Barnsley, R. Grant and N. Naulty.



Streaky Bay Ladies' Brass Band, South Australia

Active in the 1910s and 1920s



Sydney Ladies Brass Band, New South Wales

Formed in the early 1930s but by April 1934 the band was practically insolvent with debts of £107 for uniforms and instruments. Hilda Tansey and ten other players then took over the debt and formed a new organization, the Sydney Ladies' Brass Band, with Hilda as honorary conductor and teacher. Other women joined until they had 29 members. With the exception of some bass instruments and drums, each girl bought her own instrument, and they made their first appearance in a grand pageant on Gala Day, November 22, 1934. During their initial preparation and training period they raised £65 through social functions, and by adding £35 from engagements and the remainder from the members' contributions of one shilling per week, they had paid off the debt with which they started within four months of accepting engagements. During WW2 the band played for the troops at Liverpool and Ingleburn. Unfortunately the R.S.L. refused to let the band march on Anzac Day in 1945, and this was a contributing factor to the members' decision to disband. Barbara, Ruby and Marjorie Hodgkins all played in the band. The original uniform consisted of a red tunic with gold braid trimmings and a cape with a gold lining. The cap had a gold tassel and the skirt and stockings were white.





CANADA

Alton Girl's Band, Ontario

Active in 1895, conductor F.O. Smith



Edmunston Girls' Brass Band, New Brunswick

Founded in 1938 by Léo Poulin. Original members were: Léo Poulin, director, Dolorès Lapointe, Dorothy Côté, Dorothy Charron, Thérèse Fournier, Gilberte Lagassé, Céline Albert et Béatrice Lagassé, drum-major, Annette Soucy, Anita Bélanger, Hilda Albert, Éva Pelletier, Charlotte Landry, Madeleine Boucher, Yvette Malenfant, Léona Bourgeois, Jeannette Pelletier, Norma David, Jean Harding, Patricia McLean, Fernande Ouellette, Monica Bourgeois, Louiselle Morin, Simone Pelletier, Cécile Lagassé, Ruth Charron, Thérèse Albert, Georgia McElroy, Gladys Richards and Anita Aubut, Hilda Rossignol, Anita Albert, Viola Violette, Audrey Whitehouse, Thérèse Lagassée, Gertrude Bellefleur, Dorothy Cyr, Rosanne Boucher and Shirley Miller.



Fort William Girls' Military Band, Ontario



Killarney Ladies Silver Band, Manitoba

Active in 1908



Ladies Band, Vienna, Ontario

Melody Makers Ladies Band, Maple Creek, Saskatchewan



Oxbow Ladies' Silver Band, Saskatchewan

Active around 1900

Port Elgin Ladies' Brass Band

Founded in the 1880s

St. Mary's Indian Residential School Brass Band, Mission, British Columbia

Founded in 1962 by Father Bert Dunlop, with Stuart Dunning as the first instructor. Active through to the closure of the school in 1984. The band consisted of girls from the school

Vienna Ladies' Band, Ontario



FRANCE

Louverne Ladies' Brass Band

Active in 1914 to 1917. A professional band that fled France during WW1 and toured the USA with the Billy "Single" Clifford Company. The Band was used by Billy Clifford to advertise his evening show, of which they were part, by them giving a free lunchtime concert in whatever town they were appearing in. One report states that the 14 band members were originally studying at the Louvre Seminary in Paris, before fleeing to the USA. Another that they had been playing for years in France before coming to the USA. The band, together with some other, American, ladies [Ruth Coughlin, Florence Bentley (leader), Sylvia Kelly, Grace Fields, Evolena Guthrie, Cozy Lewis, Jessie West, and Glentora Wolf] made up the Imperial Orchestra.



JAPAN

Girls Brass Band Mikeneko, Osaka

[Current band] - Founded in 2002. Members in 2016 were: Principal Solo Cornet - Naoko Ozaki; Assistant Principal Solo Cornet - Tomoyo Takamura; Tutti Solo Cornet - Etsuyo Ueda, Maki Yasukawa; Soprano Cornet - Masayo Umino; Repiano Cornet - Yuki Kimoto; 2nd Cornet - Keiko Fujishima, Mie Araki, Chika Fukushima; 3rd Cornet - Chinami Inoue, Makiko Yabu; Flugel Horn - Risa Matsumoto; Solo Tenor Horn - Shoko Yamasaki; 1st Tenor Horn - Kaori Nakajima; 2nd Tenor Horn - Yumiko Yamaguchi, Yuki Sakaue; 1st Baritone - Miyuki Akimoto; 2nd Baritone - Terumi Fushihara; 1st Trombone - Chiharu Yabe; 2nd Trombone - Reiko Fukuba, Rika Ishimoto; Bass Trombone - Shizuka Fujita; Solo Euphonium - Ayano Nakanishi; 2nd Euphonium - Haruka Etou, Yuko Kuramoto; Eb Bass - Sachiko Hirano, Kaori Suganuma; Bb Bass - Mituko Mukoyama, Risa Yamamoto; Percussion - Miho Tsuyuguchi, Yuko Yasuoka, Junko Miyake, Norie Sakanaka



Japan Ladies' Brass Band, Tokyo

[Current band] - Founded in 2004

NEW ZEALAND

Auckland Girls' Brass Band

Active in the 1930s



Auckland Ladies Band

Active in the 1970s

Dunedin Ladies' Brass Band

Founded in July 1940 by conductor Arthur Hodgkins. Secretary, Rhoda Strachan. Subscription for performing members was 1s 6d weekly. Hilmer Davie became conductor in June 1941. Still active in 1945. [Further information - see: Anon - Dunedin Ladies Band 1940-1975 - Mouthpiece : the official journal of the NZ Brass Bands Association - December 1993 v39, no 11, p.4; Anon - The Dunedin Ladies' Brass Band : 21st anniversary, 1940-1961 - Evening Star, Dunedin, New Zealand, 1961]



SWEDEN

Éowyn Brass

[Current band] - Founded in 2014 by Malin Arup. An all-female brass band



SWITZERLAND

Girls in Brass

[Current band] - Founded in 2015 - A band composed of the best female brass musicians in Switzerland, coming together for special concerts



UGANDA

Mbale Schools All Girls Brass Band

[Current band] - Founded in 2017



List of bands

United Kingdom

Adamless Eden Ladies Brass Band
Blushing Brass, Verwood, Dorset
Boobs and Brass, Northamptonshire
Cardiff Girls' Brass Band, Glamorgan
Church Nursing and Ambulance Brigade Ladies' Brass Band, London
Cora Corson's Instrumentalists
Cosway Street Women's Brass Band, Marylebone, Middlesex
Cullen Ladies' Brass Band, Banffshire
Edgware Road Ambulance Association Ladies' Band, London
Empress Ladies Brass Band, London
Fife Ladies' Brass Band, Cowdenbeath, Fife
Horsforth Ladies' Brass Band, Yorkshire (West Riding)
Monument Church Ladies' Brass Band, London (City)
Norwich High School for Girls' Brass Band, Norfolk
Nottingham Ladies' Brass Band, Nottinghamshire
Nottingham Y.W.C.A. Girls' Brass Band, Nottinghamshire
Pink Bra'ss, Somerset
Queenswood College Girls' Brass Band, Hatfield, Hertfordshire
Ramsdale and Long's Ladies' Brass Band
St Helier Girls School Brass Band, Isle of Jersey
Staining Ladies' Band, Lancashire
Trinity Girls Brass Band, Garswood, Lancashire
Women's Land Army Brass Band, London
Women's Quarry Munitions Workers Band, Buxton, Derbyshire
Wonderbrass, Cornwall

United States of America

Alabama

Columbia Girls' Brass Band
Opp Ladies' Cornet Band
State Training School for Girls Band, Chalkville

Arizona

Mesa Ladies' Cornet Band
Tempe Ladies' Cornet Band

Arkansas

Harrison Ladies' Cornet Band
Little Rock Girls' Brass Band, Pulaski Heights
Melbourne Girls' Brass Band
Pulaski Heights Girls' Brass Band
Wilmar Girls' Cornet Band

California

Boulon's California Ladies' Brass Band
California Ladies' Band, Los Gatos
Echo Park Playground Girls' Brass Band, Los Angeles
Livermore Ladies' Brass Band
Mendocino Ladies' Brass Band
Point Arena Ladies' Brass Band
Redlands University Women's Band, San Bernadino
Santa Ana Ladies' Brass Band
Ukiah Ladies' Band
Weaverville Ladies' Brass Band
Willits Ladies' Brass Band

Colorado

Greeley State Teachers' College Girls' Brass Band
Ladies' Columbine Band, Grand Junction
Rifle Ladies' Band

District of Columbia

Miller's Ladies' Brass Band, Washington

Florida

Kissimmee Ladies' Cornet Band
Lake Maitland Female Cornet Band

Illinois

Aledo Ladies' Cornet Band
Altona Ladies' Cornet Band
Barrington Ladies' Cornet Band
Brighton Ladies' Cornet Band
Dallas City Ladies' Cornet Band
Dan's Female Brass Band, Morrison
Decatur Ladies' Cornet Band
Durand Ladies' Brass Band
Euterpe Ladies' Cornet Band, Chicago
Forest City Ladies' Cornet Band
Galesburg Colored Ladies' Brass Band
Homer Ladies' Cornet Band
Lovington Girls' Brass Band
Monmouth Ladies' Cornet Band
Northwestern University Ladies' Brass Band, Evanston
Rentz's Ladies' Brass Band
Saybrook Ladies' Cornet Band
Toledo Ladies' Cornet Band
Trinity Ladies Band, Joliet

Indiana

Andrews Ladies' Brass Band, Andrews
Angola Ladies' Cornet Band
Antioch Ladies' Cornet Band
Auburn Ladies' Cornet Band
Binager Ladies' Cornet Band, Indianapolis
Burlington Girls' Cornet Band
Butler Ladies' Band
Edinburg Ladies' Cornet Band
Elizabethtown Young Ladies' Cornet Band
Fairland Ladies' Cornet Band
Fort Wayne Ladies' Cornet Band
Fremont Girls Band
Greencastle Ladies' Cornet Band
Greenwood Young Ladies' Brass Band
Indianapolis Female Cornet Band
Loogootee Ladies' Cornet Band
Monroeville Ladies' Brass Band
Tipton Ladies' Cornet Band
Waterloo Ladies' Cornet Band
Weyerbacher's Ladies' Brass Band, Evansville
Wienland's Ladies' Cornet Band, Hope

Iowa

Audubon Ladies' Cornet Band
Buffalo Center Ladies' Cornet Band
Coppock Ladies' Band
Davenport Ladies' Band
Dubuque Girls Band
Dunlap Ladies' Brass Band
Eldora Women's Brass Band
Fort Madison Ladies' Band
Gladbrook Women's Brass Band
Goldfield Ladies' Brass Band
Guttenburg Girls' Band
Hubbard Ladies' Cornet Band
Iowa State Normal School Ladies Band, Cedar Falls
Keota Ladies Band
Knoxville Ladies' Brass Band
Manning Ladies Brass Band
Marcus Women's Brass Band
Marengo Ladies' Cornet Band
Postville Ladies' Band
Rock Valley Ladies' Brass Band
Ruthven Ladies' Cornet Band
Sheldon Ladies' Cornet Band

Sibley Ladies' Cornet Band
Storm Lake Ladies' Band
West Branch Girls' Cornet Band
Yeoman Ladies Band, Muscatine

Kansas

Abilene Ladies' Brass Band
Argonia Ladies' Brass Band
Arkansas City Ladies' Brass Band (1)
Arkansas City Ladies' Brass Band (2)
Ashland Ladies' Cornet Band
Atwood Female Cornet Band
Baxter Springs Ladies' Brass Band
Belle Plaine Ladies' Brass Band
Burden Ladies' Cornet Band
Burrton Ladies' Brass Band
Caney Female Cornet Band
Cedar Vale Girls Band
Chanute Ladies' Cornet Band
Chetopa Ladies' Brass Band
Coffeyville High School Ladies' Brass Band
Colwich Ladies' Brass Band
Council Grove Ladies' Brass Band
Davis Ladies' Cornet Band, Douglass
Dodge City Ladies' Brass Band
Downs Young Ladies' Cornet Band
Ellis Ladies' Cornet Band
Elmdale Ladies' Cornet Band
Emporia Ladies' Brass Band
Emporia Ladies' Cornet Band
Erie Ladies' Brass Band (1)
Erie Ladies' Brass Band (2)
Fort Scott Ladies' Cornet Band
Fort Smith Ladies' Cornet Band
Garden City Female Cornet Band
Goodland Ladies' Cornet Band
Great Bend Ladies' Brass Band
Hoisington Ladies' Cornet Band
Holyrood Ladies' Brass Band
Humboldt Ladies' Brass Band
Iola Ladies' Brass Band (1)
Iola Ladies' Brass Band (2)
Lazelle Female Cornet Band
Leavenworth Ladies' Brass Band
Marquette Ladies' Cornet Band
Meriden Ladies' Cornet Band
Ness City Ladies' Cornet Band
Norcaturn Ladies' Brass Band
North Topeka Young Ladies' Brass Band
Oberlin Ladies' Cornet Band
Olmitz Ladies' Brass Band
Oswego Ladies' Brass Band
Oxford Ladies Band
Phillipsburg Girls' Band
Pratt Ladies' Band
Salina Ladies' Brass Band
Scandia Ladies' Cornet Band
Scranton Ladies' Brass Band
Sedan Ladies' Cornet Band
Sedgwick Ladies' Cornet Band
Smith Center Ladies' Brass Band
Stockton Ladies' Cornet Band
Sunflower Girls' Brass Band, Effingham
Sunflower Women's Band, Cherryvale
Tilford Studios Ladies' Brass Band, Emporia
Udall Ladies' Band
Walnut Ladies' Brass Band
Waterville Ladies' Brass Band
Wellington Girls Band
Wellsville Ladies' Brass Band
Wetmore Ladies' Brass Band
White City Ladies' Band
Winfield Ladies' Brass Band
Yates Center Women's Brass Band

Kentucky

University of Kentucky Ladies Band
Vine Grove Young Ladies' Brass Band

Louisiana

Opelousas Academy Ladies' Brass Band

Maine

Athens Ladies Band
Newport Ladies Band

Maryland

Athena Brass Band, Montgomery Village
Baltimore Ladies' Brass Band
Brooklyn Ladies' Band, Baltimore

Massachusetts

Boston Ladies' Brass Band
Helen May Butler's Ladies Brass Band, Boston
Jessie Alton Ladies Band, Hanson
Oak Grove Girls Band
Talma's Ladies' Brass Band, Boston

Michigan

Bancroft Ladies' Cornet Band
Caro Ladies' Brass Band
Charlevoix Ladies' Brass Band
Coopersville Ladies Band
Detroit Women's Cornet Band
Faux Girls' Band, Frankfort
Fenton Ladies' Brass Band
Flushing Ladies' Cornet Band
Gierk's Ladies Band, Richmond
Grand Ledge Ladies' Cornet Band
House of David Girls Band, Eden Springs, Benton Harbor
Kalkaska Ladies' Brass Band
Lakeside Ladies Band, Detroit
Minden Ladies' Brass Band
Oak Grove Ladies Independent Band
Palmer and Snelbaker's Female Cornet Band
Reading Ladies' Imperial Band
Richmond Ladies' Brass Band
Whitehall Ladies' Cornet Band
Williamston Girls Band
Young Ladies Cornet Band, Claro

Minnesota

Annandale Girls' Cornet Band
Fairfax Ladies' Band
Luverne Girls' Cornet Band
Mapleton Ladies' Military Band
Petersen's Imperial Ladies Band, Pipestone
Pipestone Indian School Girl Band
Watertown Ladies Band

Mississippi

State Teachers College Girls Band, Jackson

Missouri

Allendale Ladies' Cornet Band
Columbia Christian College Girls' Cornet Band
Edina Ladies Band
Kate Baker's Ladies' Silver Cornet Band, Gallatin
Rock Port Ladies' Cornet Band
Rockport Ladies' Brass Band

Montana

Belgrade Girls' Brass Band
Boulder Ladies' Cornet Band

Glacier Park Girls' Brass Band, Kalispell
Ladies Imperial Band, Bozeman
Missoula Girls' Cornet Band
Red Lodge Ladies' Brass Band

Nebraska

Auburn Ladies' Cornet Band
Beaver City Ladies' Band
Blue Springs Ladies' Brass Band
Chadron Ladies' Cornet Band
Clarkson Bohemian Ladies' Brass Band
Fullerton Ladies' Brass Band
Hastings Ladies' Cornet Band
Johnson Ladies' Brass Band
Ladies Ideal Band, Lynch
Lincoln Ladies' Brass Band
Pembleton's Ladies Martial Band, York
Peru Ladies' Cornet Band
Red Cloud Ladies' Cornet Band
Seward Ladies' Silver Cornet Band
Tekamah Ladies' Cornet Band
Ulysses Ladies' Cornet Band
Valentine Ladies' Brass Band
Verdon Ladies' Brass Band
Weeping Water Ladies' Cornet Band

Nevada

Carson Little Girls' Brass Band, Carson City
Hoskins' Young Ladies' Brass Band, Reno

New Jersey

Atlantic City Ladies Band

New York

Bertha Meyer's Women's Brass Band, Rochester
Bradford Ladies' Cornet Band
Madame Belding's Female Cornet Band
Maddern Family Female Brass Band
New York Ladies' Brass Band
Olean Ladies' Cornet Band
Randles Ladies Band, Walden
Sheppards' Golden Band, New York
South Onondaga Ladies' Brass Band
Ticonderoga Ladies' Cornet Band

North Carolina

Winston-Salem Ladies' Brass Band

North Dakota

Beach Ladies' Brass Band
Fargo Ladies' Brass Band
Hope Girls' Brass Band

Ohio

Akron Ladies Band
Athens Ladies Band
Barberton Ladies' Band
Brecksville Ladies' Cornet Band
Chagrin Falls Ladies' Brass Band
Chuckery Ladies' Cornet Band
Copley Ladies' Cornet Band
Defiance Girls' Cornet Band
East Liverpool Girls' Cornet Band
First Christian Ladies' Brass Band, Eaton
Fitz's Girls Band, Bethel
Harrison Brass Band, Maineville
Hart's Girl Band, Hicksville
Hemmerly's Ladies Band, Fostoria
I.O.O.F. Home Girls Band, Springfield
Ladies Imperial Band, Chicago Junction
Logan Ladies' Brass Band
Marion Ladies Band

Mount Gilead Ladies' Band
Pitcher's Ladies Brass Band, Chicago Junction, Willard
Risingsun Ladies' Concert Band
Sandyville Ladies' Brass Band
Sycamore Ladies' Concert Band
Wellston Ladies' Concert Band
Willshire Ladies' Cornet Band
Zays Ladies Band, Bowerston

Oklahoma

Anadarko Ladies' Cornet Band
Checotah Ladies Concert Band
Edmond Ladies' Band
Norman Ladies' Brass Band
Perkins Ladies' Band, Guthrie
Stillwater Ladies' Cornet Band

Oregon

Albany Young Ladies' Brass Band
Arlington Ladies' Brass Band
Canyon City Ladies' Band
Corvallis Ladies' Cornet Band
Cottage Grove Ladies' Brass Band
Gold Hill Girls' Brass Band
Heppner Ladies' Brass Band
Linn Ladies' Brass Band
Oxbow Ladies' Silver Band
Portland Ladies' Cornet Band
Roseburg Ladies' Brass Band
Roy Graves Canning Company Ladies Band, Sheridan
Springfield Ladies' Cornet Band
University of Oregon Ladies' Band, Eugene
Williamson Ladies Brass Band

Pennsylvania

Alcryon Ladies' Brass Band, Pittsburgh
Allentown Ladies' Band
Bates Girl Band, Villisca
Beaver Springs Girls' Cornet Band
Benezette Ladies' Cornet Band
Berger Family Female Brass Band
Buck Taylor's Famous Cowgirl Band, Willow Grove
Cherry Tree Girls' Cornet Band
Clymer Ladies' Brass Band
Colonial Ladies Band, Philadelphia
Covington Girls' Cornet Band
Delmar Girls' Brass Band, Philadelphia
Grove City Ladies' Cornet Band
Hygia Female Cornet Band, Steelton
James Liberty Female Band, Philadelphia
Lancaster Girls' Brass Band
Meyersdale Ladies' Cornet Band
North Shenango Ladies' Cornet Band
Polk Mental Institution Ladies Band, Polk
Roulette Ladies' Cornet Band
Silver Tone Ladies' Cornet Band, Espyville
Stoneboro Ladies' Cornet Band
Wattsburg Women's Brass Band

South Dakota

Huron Ladies' Cornet Band
Madison Ladies' Cornet Band

Texas

Jasper College Girls' Cornet Band
Mount Pleasant Ladies' Brass Band
Nocona Girls' Brass Band
W.B.A. Ladies' Brass Band, Houston

Utah

Ladies Military Band, Provo
Ladies Mountain Echo Band, Ephraim
Murdock Academy Ladies Band, Beaver

St George Ladies' Cornet Band
Washington Ladies' Cornet Band
Vermont

Donna Ladies' Brass Band

Virginia

Dayton Ladies' Cornet Band
Shenandoah Valley Women's Brass Band

Washington

Ellensburg Girls Band

West Virginia

Mountain Beauties Band, Hendricks

Wisconsin

Albion Lady Cornet Band
Downer College Ladies' Cornet Band, Fox Lake
Fond du Lac Ladies' Cornet Band
Kenosha Girls' Cornet Band
Ladies Ideal Band, Mauston
Milwaukee Ladies' Cornet Band
Montfort Girls Band
Onalaska Ladies' Brass Band
Oshkosh Ladies' Cornet Band
Prairie du Sac Ladies Brass and Reed Band
Racine Ladies' Cornet Band
Randolph Ladies' Brass Band
Strum Ladies' Band
Utopian Ladies Band, Belleville

Unknown state

Helman's Ladies' Cornet Band
Holcomb and Robertson's Young Ladies' Cornet Band
Navassar Ladies Band
New Orleans Minstrels Ladies' Cornet Band
Orton Brothers Ladies' Silver Cornet Band
Russell Ladies Band
Spaulding's Ladies' Cornet Band
Stanselle's Ladies' Brass Band

Australia

Brisbane Ladies Coronation Brass and Reed Band, Queensland
Burra Cheer-up Girls Brass Band, South Australia
Clare Girls' Band, South Australia
Largs Orphanage Girls' Brass Band, South Australia
Silver City Ladies' Brass Band, Broken Hill, New South Wales
Streaky Bay Ladies' Brass Band, South Australia
Sydney Ladies Brass Band, New South Wales

Canada

Alton Girl's Band, Ontario
Edmunston Girls' Brass Band, New Brunswick
Fort William Girls' Military Band, Ontario
Killarney Ladies Silver Band, Manitoba
Ladies Band, Vienna, Ontario
Melody Makers Ladies Band, Maple Creek, Saskatchewan
Oxbow Ladies' Silver Band, Saskatchewan
Port Elgin Ladies' Brass Band
St. Mary's Indian Residential School Brass Band, Mission,
British Columbia
Vienna Ladies' Band, Ontario

France

Louverne Ladies' Brass Band

Japan

Girls Brass Band Mikeneko, Osaka
Japan Ladies' Brass Band, Tokyo

New Zealand

Auckland Girls' Brass Band
Auckland Ladies Band
Dunedin Ladies' Brass Band

Sweden

Éowyn Brass

Switzerland

Girls in Brass

Uganda

Mbale Schools All Girls Brass Band

Bibliography

- Ammer, Christine – *Unsung: A History of Women in American Music* - Westport, Connecticut, USA, 1980
- Anon - *The Dunedin Ladies' Brass Band : 21st anniversary, 1940-1961* - Evening Star, Dunedin, New Zealand, 1961
- Anon - Dunedin Ladies Band 1940-1975 - *Mouthpiece : the official journal of the NZ Brass Bands Association* - December 1993 v39, no 11, p.4
- Anon - A Girls Brass Band - *The Young Woman*, November 1914
- Armsby, Heather - *The role of women in the British brass band* - Thesis, Open University, in progress 2018
- Babbe, Annkatrin - *Ein Orchester, wie es bisher in Europa noch nicht gesehen und gehört worden war: Das 'Erste Europäische Damenorchester' von Josephine Amann-Weinlich* - Schriftenreihe des Sophie Drinker Instituts, BIS-Verlag der Carl von Ossietzky Universität Oldenburg, 2011. ISBN: 978-3-8142-2230-1
- Babbe, Annkatrin - Von der Straße in den Konzertsaal: Damenkapellen und Damenorchester im 19. Jahrhundert, in: Ahlers, Michael; Lücke, Martin; & Rauch, Matthias (eds.) - *Musik und Straße* - Jahrbuch für Musikwirtschafts- und Musikkulturforchung - Springer VS, 2019, pp. 127-146. ISBN: 978-3-658-26101-6
- Backhaus, Patricia - An Adamless garden of musical Eves - A short history of Helen May Butler: the female Sousa. - in *Kongressbericht Feldkirch/Vorarlberg*, ed. Suppan, W, pp. 181-84. *Alta Musica* 16, Tutzing Hans Schneider, 1992 - ISBN: 3795207932
- Buzzarté, Monique - Women's Contributions to the Brass Repertoire: A List of Works, in: *The Musical Woman: An International Perspective*, Volume III, 1986-1990, ed. Judith Lang Zaimont, pp.546-617. Greenwood Press, Westport, CT, USA, 1991
- Cape, Janet, and Nichols, Jeananne - Engaging Stories: Constructing Narratives of Women's Military Band Members, in *Narrative Soundings: An Anthology of Narrative Inquiry in Music Education*, Springer Netherlands, 2012. pp. 23-35. ISBN: 978-94-007-0698-9
- Card, Robyn Dewey - *Women as classically-trained trumpet players in the United States* - D.M.A., West Virginia University, 2009
- Creasap, Susan Diane - *American Women Composers of Band Music: A Biographical Dictionary and Catalogue of Works* - D.A. in Music, Ball State University, 1996
- Ellis, Katharine - The Fair Sax: Women, Brass-Playing and the Instrument Trade in 1860s Paris - *Journal of the Royal Musical Association*, Vol. 124, No. 2 (1999), pp. 221-254
- Etheridge, Stephen - *Women at Brass Band Contests in the First Year of World War One: Challenging a Traditional Homosocial Arena* - [Music-Making in Manchester During World War One] - See:
<https://musicmcrww1.wordpress.com/2016/07/25/women-at-brass-band-contests-in-the-first-year-of-world-war-one-challenging-a-traditional-homosocial-arena/>
- Farmer, Dawn M. and Rickels, David A. - Legacies of Leadership: Lillian Williams Linsey and Gladys Stone Wright, in: Sullivan, Jill M. (ed.) - *Women's Bands in America: Performing Music and Gender* - Rowman & Littlefield, 2016. ISBN: 978-1-4422-5440-4. pp. 127-152
- Finch, L. Boyd - *A tune of their own: The history of Aledo's original all-female cornet band* - Illinois Heritage, 2002 (Illinois Periodicals Online)
- Gould, Elizabeth S. - Cultural Contexts of Exclusion: Women College Band Directors - *Research & Issues in Music Education* - Vol. 1, No. 1, 2003
- Handy, D. Antoinette - *Black women in American bands and orchestras* - Scarecrow Press, Lanham, 1998

- Hash, Phillip M. - The Austin High School Girls' Band of Chicago, Illinois: 1925–1956 - *Journal Research in Music Education*, January 2018. DOI: 10.1177/0022429418755501
- Hersey, Joanna Ross - *Such unfeminine instruments - Women brass musicians in America before 1940* - Thesis, 2006
- Hersey, Joanna Ross - An Attraction of Unusual Merit: Women's Bands on the Vaudeville Stage, in: Sullivan, Jill M. (ed.) - *Women's Bands in America: Performing Music and Gender* - Rowman & Littlefield, 2016. ISBN: 978-1-4422-5440-4. pp. 73-94
- Hersey, Joanna Ross - Ten Tips for Tip Top Tuba Mamas: Pregnancy in a Low Brass Performance Career - *The International Tuba and Euphonium Journal*, Volume 41, No. 3, Winter 2014, 35-36.
- Hersey, Joanna Ross - The Athena Brass Band - *Noteworthy: Official Newsletter of the International Women's Brass Conference*, Summer 2014, Volume 21, No. 1, p. 9.
- Hersey, Joanna Ross - The Entertainment Value of Novelty: Women Brass Musicians on the Vaudeville Stage - *Historic Brass Society Journal* - Vol. 20, 2008, pp.155-173
- Hersey, Joanna Ross, et al. - Women's Bands Strike a Chord - *Music Educators Journal* - Vol. 95 (2), December 2008, pp. 6-11
- Hoffmann, Freia - Amazonen mit Blechinstrumenten - Adolphe Sax und der heilsame Einfluss der Lungengymnastik - *Üben & Musizieren* - 5 (2008), pp. 50–54
- Holman, Gavin - *Damen und Damen - Ladies' professional travelling brass ensembles of the German Empire 1871-1918* - November 2017. Available from - <https://gavinholman.academia.edu>
- Holman, Gavin - *Soft lips on cold metal: female brass soloists of the 19th and early 20th centuries* – October 2018. Available from - <https://gavinholman.academia.edu>
- Howe, Sondra Wieland - Ladies Brass Bands in Minnesota and Wisconsin, 1890-1925 - *NAfME Music Research and Teacher Education National Conference* - Atlanta, Georgia, Thursday, 22 March 2018
- Howe, Sondra Wieland - Town Bands, 1880-1920, in: Sullivan, Jill M. (ed.) - *Women's Bands in America: Performing Music and Gender* - Rowman & Littlefield, 2016. ISBN: 978-1-4422-5440-4. pp. 51-72
- Howe, Sondra Wieland - *Women Music Educators in the United States: A History* - Scarecrow Press, 2014. ISBN: 978-0810888470
- IWBC [International Women's Brass Conference] Pioneer's Committee - *Women Brass Musicians: Past and Present, Professionals in Performance and University Education* - IWBC, St. Louis, 1993
- Jackson, Cheryl - Women as Leaders of Collegiate Bands, 1850-1980 - *College Music Symposium* - Vol. 38 (1998), pp. 118-125
- Kaufmann, Dorothea - “...routinierte Trommlerin gesucht: Musikerin in einer Damenkapelle - Zum Bild eines vergessenen Frauenberufes aus der Kaiserzeit” - *Schriften zur Populärmusikforschung* 3, Coda Musikservice, 1997. ISBN: 3000018387
- Keil, Ulrike - Professionelle Damenkapellen und Damenorchester um die Jahrhundertwende, in: Christian Kaden and Volker Kalisch (eds.) - *Von delectatio bis entertainment. Das Phänomen der Unterhaltung in der Musik* - Die blaue Eule Verlag, Essen, 2000, pp. 99–110
- Keil, Ulrike - Von Wandermusikanten zum Damenorchester. Professionelle Damenkapellen und Frauenorchester um die Jahrhundertwende - *Das Orchester* - Vol. 11, 1998, pp. 18–25
- Larson, Danelle D. - A Survey of All-Female Drum and Bugle Corps featuring the Hormel Girls, in: Sullivan, Jill M. (ed.) - *Women's Bands in America: Performing Music and Gender* - Rowman & Littlefield, 2016. ISBN: 978-1-4422-5440-4. pp. 153-168
- Meyers, Brian D. - Helen May Butler and her Ladies' Military Band: Being Professional during the Golden Age of Bands, in: Sullivan, Jill M. (ed.) - *Women's Bands in*

- America: Performing Music and Gender* - Rowman & Littlefield, 2016. ISBN: 978-1-4422-5440-4. pp.15-50
- Myers, Margaret - *Blowing Her Own Trumpet, European Ladies' Orchestras and Other Women Musicians 1870-1950* - Göteborg, Sweden, 1993.
- Myers, Margaret - Searching for data about European Ladies' Orchestras, in: Moisala, Pirkko and Diamond, Beverley (eds) *Music and Gender* - University of Illinois Press, 2000, pp. 189-214. ISBN: 025202544X
- Nichols, Jeananne - Into the Wild Blue Yonder: A History of the US WAF Band, 1949-1961, in: Sullivan, Jill M. (ed.) - *Women's Bands in America: Performing Music and Gender* - Rowman & Littlefield, 2016. ISBN: 978-1-4422-5440-4. pp. 269-300
- Nichols, Jeananne - Living History Pioneering Bandswomen of the United States Air Force - *Music Educators Journal* Vol. 101, no. 3, 2015, pp. 55-62
- Pennanen, Risto Pekka - R.H. Dietrich's Damenorchester: Marketing and Networking, in: Colonial, Silenced, Forgotten, in: Kurkela, Vesa & Mantere, Markus (eds.) - *Critical Music Historiography: Probing Canons, Ideologies and Institutions* - Routledge, 2016, pp. 107-122. ISBN: 978-1472414199
- Reinhart, Carole Dawn - *Women Brass Musicians - Historical Documentation and the Influence of the International Women's Brass Conference on their Profession* - PhD Thesis, University of Vienna, 2009. Available from the IWBC - www.myiwbc.org
- Shrumm, Regan - *The founders of all-female brass bands* - Smithsonian Music Essays
- Silva, Vilka Elisa Castillo - Blowing the Tradition: Women Performing in the Banda Sinfonica de Marina-Armada de Mexico, in: Sullivan, Jill M. (ed.) - *Women's Bands in America: Performing Music and Gender* - Rowman & Littlefield, 2016. ISBN: 978-1-4422-5440-4. pp. 325-352
- Stewart, Marian - The United States Air Force Band - Women in their history - *The Brass Herald* - (46) December 2012, pp. 60-61
- Sullivan, Jill M. - *Bands of Sisters: U.S. Women's Military Bands During World War II* (American Wind Band Series), Scarecrow Press, 2011. ISBN: 978 08108 81624
- Sullivan, Jill M. - A Century of Women's Bands in America - *Music Educators Journal*, Vol. 95, No. 1 (Sep. 2008), pp. 33-40
- Sullivan, Jill M. - A history of the Marine Corps Women's Reserve Band - *Journal of Band Research*, 42(1), Fall 2006, p.1-41.
- Sullivan, Jill M. - Music for the injured soldier: A contribution of American women's military bands during World War II - *Journal of Music Therapy*, 44(3), 2007, p.282-305.
- Sullivan, Jill M. - Parading Women: The Commodification of Women's Military Bands during World War II, in: Sullivan, Jill M. (ed.) - *Women's Bands in America: Performing Music and Gender* - Rowman & Littlefield, 2016. ISBN: 978-1-4422-5440-4. pp. 229-268
- Sullivan, Jill M. - Paula Crider - in, *Women and Music in America Since 1900: An Encyclopedia* [K. H. Burns Ed.], pp.138-139, Greenwood Press, Westport, Connecticut, 2002
- Sullivan, Jill M. - Women Music Teachers as Military Band Directors during World War II - *Journal of Historical Research in Music Education* - Vol. 39(1), January 2017, pp. 78-105. DOI: 10.1177/1536600616665625
- Sullivan, Jill M. - Women's military bands in a segregated army: The 400th and 404th WAC bands - *Journal of Band Research*, 41(2), Spring 2006, p.1-35.
- Sullivan, Jill M. & Keck, D. D. - The Hormel Girls - *American Music*, 25(3), 2007, pp.282-311.
- Sullivan, Jill M. & Spears, Amy E. - All-Female School Bands: Separate Spheres and Gender Equality, in: Sullivan, Jill M. (ed.) - *Women's Bands in America: Performing Music and Gender* - Rowman & Littlefield, 2016. ISBN: 978-1-4422-5440-4. pp. 95-126

Sullivan, Jill M. (ed.) - *Women's Bands in America: Performing Music and Gender* - Rowman & Littlefield, 2016. ISBN: 978-1-4422-5440-4
West, Ann Marie - *An Annotated Bibliography of Trumpet Solos Written by Women Composers* - DMA thesis, University of Iowa, 1995

See also

Helen May Butler – the female Sousa -
<http://butlerlink.com/Biographies/Butler/HelenMayButler/Index.html>

The Helen May Butler Collection (National Museum of American History)
<http://sova.si.edu/record/NMAH.AC.0261>

Helen May Butler and her All-American Girls
<http://temposenzatempo.blogspot.co.uk/2013/01/helen-may-butler-and-her-all-american.html>