

1911



# FESTIVAL OF EMPIRE

CRYSTAL PALACE.

Hon. Secretary - A. E. FORBES DENNIS.  
General Business Manager - HERBERT W. MATTHEWS.

Master of Festival - FRANK LASCELLES.  
Organiser of Entertainments - W. BOWMAN.



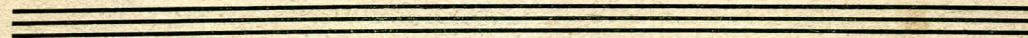
THE TWELFTH

# Great National = BAND = FESTIVAL

Under the direction of Mr. J. HENRY ILES  
Officier d'Academie Francaise

*Saturday, September 30th*  
*from 10.30 a.m.*

# 183 Bands



PROGRAMMES - TWOPENCE EACH.





The Director's Office will be outside the Concert Room.



... THE TWELFTH ...

# Great National Band Festival



Under the direction of Mr. J. HENRY ILES, Officier d'Academie Francaise.

## THE GREAT CHAMPIONSHIP CONTEST

FOR THE

**Magnificent Challenge Trophy**

**:: Value 1,000 Guineas ::**

\*\*\*\* (THE PROPERTY OF J. HENRY ILES.) \*\*\*\*

### LIST OF WINNERS.

1900—DENTON ORIGINAL.  
1901—LEE MOUNT.  
1902—BLACK DIKE MILLS.  
1903—BESSES O' TH' BARN.  
1904—HEBBURN COLLIERY.

1905—IRWELL SPRINGS.  
1906-7—WINGATES TEMPERANCE.  
1908—IRWELL SPRINGS.  
1909—SHAW.  
1910—FODEN'S MOTOR WORKS.

Test Piece : .... Selection from "LES HUGUENOTS" .... Meyerbeer

Arranged expressly by WILLIAM RIMMER.

(For full particulars of Prizes, etc., see pages 3 - 4).

### A GRAND MUSICAL EXHIBITION

in which ALL THE LEADING FIRMS of MUSICAL INSTRUMENT MANUFACTURERS and others will exhibit, will be held in the WEST CORRIDOR, near the High Level Entrance. The following well-known Firms, amongst others, will take part :

BESSON & Co., Ltd., (London); BOOSEY & Co., (London); CHAPPELL & Co., Ltd., (London); GIBBORNE & Co., Ltd., (Birmingham); HAWKES & SON, (London); ALFRED HAYS (London); JOSEPH HIGHAM, Ltd., (Manchester); JEROME THIBOUVILLE-LAMY & Co., (London); MALLETT, PORTER & DOWD, (London); MONTAGUE BROS., (London), RUDALL CARTE & Co., Ltd., (London); THE UNIFORM CLOTHING & EQUIPMENT Co., (London); "CHAMPION JOURNAL" and "BRITISH BANDSMAN."

SPECIAL NOTICE—"The Little Red Book" containing the Test-pieces, together with special notes on the Selections, can be obtained at the "BRITISH BANDSMAN" Stall, outside the Concert Room, PRICE 1s. nett. You should obtain your copy early as they were all sold before two o'clock last year.



... THE TWELFTH ...

# Great National Band Festival.

---

## PRIZES.

---

### CHAMPIONSHIP SECTION.

**FIRST PRIZE.**—THE CHAMPIONSHIP OF GREAT BRITAIN AND THE COLONIES, the winners of which will be the holders for the year (under the conditions referred to in the Regulations) of the **NATIONAL CHALLENGE TROPHY, of the value of One Thousand Guineas**, with a Certificate for framing, and a Cash Prize of **£40**. Each Member of the Band, including the Bandmaster and Secretary, will also be presented with the Crystal Palace Championship Bronze Medal, with bar and clasp. (Members of Bands winning the Trophy twice will be presented with the same Medal in solid Silver; and for Members of Bands winning the Trophy three times, a solid Gold Medal will be presented.)

**Extra Prize.**—Messrs. MALLETT, PORTER & DOWD, Ltd. of 465, Caledonian Road, London, N., will present to the First Prize Band, a complete set of New Uniform, Patrol Jackets, especially designed to commemorate the winning of the 1,000 Guinea Trophy. **Value £50.**

**Extra Prize.**—The UNIFORM CLOTHING & EQUIPMENT Co., of 5, Clerkenwell Green, London, E.C., will present to the Amateur Bandmaster of the First Prize Band, a Bandmaster's black or white patent leather Cross Belt, with pouch, whistle, chain and badge complete. (The UNIFORM CLOTHING & EQUIPMENT Co. will also present a similar Prize to the First Prize Band in each Section.) **Value £1 1s.**

**SECOND PRIZE.**—The "DAILY TELEGRAPH" CHALLENGE CUP (subject to the usual Regulations), value **FIFTY GUINEAS**, presented by the Proprietors of the "Daily Telegraph," and a Cash Prize of **£30**.

**Extra Prize.**—Messrs. HAWKES & SON, of Denman Street, Piccadilly Circus, London, W., will present to the Second Prize Band any one of their famous Excelsior Sonorous Class Instruments, to be selected from their Catalogue. **Value £26 5s.**



**CHAMPIONSHIP SECTION—Continued.****THIRD PRIZE.**—A Cash Prize of **£20.**

**Extra Prize.**—Messrs. BESSON & Co., Ltd., of 196 and 198, Euston Road, London, N.W., will present to the Third Prize Band any one of their famous "Enharmonic" Valve Instruments, as used by all the leading Contesting Bands.

**Value £20.**

**FOURTH PRIZE.**—A Cash Prize of **£16.**

**Extra Prize.**—Messrs. BOOSEY & Co., of 295, Regent Street, London, W., will present to the Fourth Prize Band one of their famous B flat Cornets, plated, fully engraved and gilt, with Solbron valves, in square velvet lined leather case.

**Value £16 16s.**

**FIFTH PRIZE.**—A Cash Prize of **£12.**

**Extra Prize.**—Mr. ALFRED HAYS, of 26, Old Bond Street, London, W., will present to the Fifth Prize Band, a silver plated B flat Tenor Slide Trombone, "Buffet" Soloist make.

**Value £15 15s.**

**SIXTH PRIZE.**—A Cash Prize of **£10.**

**Extra Prize.**—Messrs. JOSEPH HIGHAM, Ltd., of 127, Strangeways, Manchester, will present to the Sixth Prize Band, a B flat Cornet, Coronation Contesting Model, "Patent Clear Bore," Class "A," Silver Plated, in special leather case complete.

**Value £13 13s.**

**SEVENTH PRIZE.**—A Cash Prize of **£5.**

**Extra Prize.**—Messrs. GIBBORNE & Co., Ltd., of Apollo Works, Vere Street, Birmingham, will present to the Seventh Prize Band, a B flat Trombone, "Imperial Supreme" Class, silver plated, handsomely engraved and gilded, in cowhide Improved Perfection Case, fitted with Gisborne's new end protector and plush lined.

**Value £13 13s.**

**GRAND SHIELD SECTION.**

**FIRST PRIZE.**—The "DAILY EXPRESS" CHALLENGE SHIELD (subject to the usual Regulations), value **Fifty Guineas**, presented by the Proprietors of the London "Daily Express," and a Cash Prize of **£20.**

**Extra Prize.**—Messrs. MONTAGUE BROS., of 65, Goldsmiths' Row, Hackney Road, London, N.E., will present to the Band winning First Prize, one of their famous Philharmonic Class silver plated B flat Cornets, and a silver plated B flat Trombone (same class), a total

**Value of £16 16s.**

**SECOND PRIZE, £10; THIRD PRIZE, £5; FOURTH PRIZE, £3; FIFTH PRIZE, £2.**



## JUNIOR CUP SECTION.

**FIRST PRIZE.**—The “DAILY GRAPHIC” CHALLENGE CUP (subject to the usual Regulations), value **Fifty Guineas**, presented by the Proprietors of the London “Daily Graphic,” and a Cash Prize of **£5**.

**Extra Prize.**—Messrs. RUDALL, CARTE & Co., Ltd., of 23, Berners Street, Oxford Street, London, W., will present to the First Prize Band, one of their Patent Conical Bore B flat Cornets, plated, in leather case. **Value £12 19s.**

**SECOND PRIZE, £3; THIRD PRIZE, £2; FOURTH PRIZE, £1.**

**Extra Prize.**—Messrs. KESSELLS & COMPANY, of 57, Berners Street, London, W., will present to the Second Prize Band a B flat Tenor Slide Trombone, “Royal” Class, handsomely decorated, and thickly silver plated. **Value £11.**

## PRELIMINARY SHIELD SECTION.

**FIRST PRIZE.**—The “PEOPLE” CHALLENGE SHIELD (subject to the usual Regulations), value **Fifty Guineas**, presented by the Proprietors of the “People” Weekly Newspaper, and a Cash Prize of **£5**.

**SECOND PRIZE, £3; THIRD PRIZE, £2; FOURTH PRIZE, £1.**

## PRELIMINARY CUP SECTION.

**FIRST PRIZE.**—The “DAILY MIRROR” CHALLENGE CUP (subject to the usual Regulations), value **Fifty Guineas**, presented by the Proprietors of the London “Daily Mirror,” and a Cash Prize of **£5**.

**SECOND PRIZE, £3; THIRD PRIZE, £2; FOURTH PRIZE, £1.**

## REED BAND SECTION.

**FIRST PRIZE.**—The “PEARSON’S WEEKLY” CHALLENGE SHIELD (subject to the usual Regulations), value **Fifty Guineas**, presented by the Proprietors of “Pearson’s Weekly,” and a Cash Prize of **£10**.

**Extra Prize.**—Messrs. JEROME THIBOUVILLE-LAMY & Co., of 10, Charterhouse Street, London, W.C., will present to the First Prize Band, a New Model, Special Class, B flat Solo Cornet, with finely engraved bell and silver plated, in black leather velvet lined case. **Value £12 12s.**



**REED BAND SECTION—Continued.****SECOND PRIZE.**—A Cash Prize of **£5.**

**Extra Prize.**—Messrs. CHAPPELL & Co., Ltd., of 50, New Bond Street, London, W., will present to the Second Prize Band for the Amateur Bandmaster, a handsome Silver mounted Ebony Presentation Baton in lined case. **Value £1 10s.**

**THIRD PRIZE, £3; FOURTH PRIZE, £2.****BOYS' BAND SECTION.**

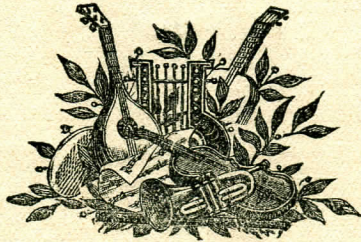
**FIRST PRIZE.**—The “WOODS” CHALLENGE CUP (subject to the usual Regulations), value **Ten Guineas**, presented by W. S. Woods, Esq., Barkers Pool, Fargate, Sheffield, and a Prize of the value of **£5.**

**SECOND PRIZE.**—Of the value of **£2.**

**Extra Prize.**—Messrs. CHAPPELL & Co., Ltd., of 50, New Bond Street, London, W., will present to the Second Prize Band Amateur Bandmaster, a Silver mounted Ebony Presentation Baton in lined case. **Value £1 1s.**

**THIRD PRIZE.**—Of the value of **£1.****CONSOLATION CUP SECTION.**

**FIRST PRIZE.**—The “CHAMPION JOURNAL” CHALLENGE CUP (subject to the usual Regulations) presented by R. SMITH & Co., Ltd., of 210, Strand, London, W.C., and a Cash Prize of **£5.**

**SECOND PRIZE, £3; THIRD PRIZE, £2; FOURTH PRIZE, £1.**



# TIMES OF ENTERTAINMENTS, :: :: COMPETITIONS, etc. :: ::

---

10.30.—CENTRAL BANDSTAND.

## Brass Band Contest for the "Daily Express" Challenge Shield and other Prizes. (See page 4).

Adjudicators:—Messrs. J. MANLEY and S. HOWCROFT.

### GRAND SHIELD SECTION.

Test Piece—Selection ..... "MARITANA" ..... Wallace

| <i>Band.</i>                      | <i>Conductor.</i>      | <i>Draw.</i> | <i>Result.</i> |
|-----------------------------------|------------------------|--------------|----------------|
| 1. Ammanford Urban ... ..         | D. J. Stevens ... ..   | ✓ 5          | ...            |
| 2. Blaengarw Silver ... ..        | W. Layman ... ..       | 18           | ...            |
| 3. Boots Plaisaunce ... ..        | E. J. Else ... ..      | 19           | ...            |
| 4. Birtley Town ... ..            | J. Hughes ... ..       | 13           | ...            |
| 5. Clifton ... ..                 | F. Berry ... ..        | 23           | 2.             |
| 6. Clown ... ..                   | R. Richford ... ..     | ✓ 6          | ...            |
| 7. Denaby Main Ambulance ... ..   | M. Soar ... ..         | 26           | ...            |
| 8. Doncaster Excelsior ... ..     | A. Bone ... ..         | ✓ 4          | ...            |
| 9. Erimus, Middlesborough ... ..  | J. Wilson ... ..       | ✓ 7          | ...            |
| 10. Guisborough Priory ... ..     | W. Holdsworth ... ..   | 14           | 3.             |
| 11. Hetton ... ..                 | W. Straughen ... ..    | ✓ 3          | ...            |
| 12. Lincoln Malleable ... ..      | A. Holden ... ..       | 16           | 1.             |
| 13. Middlesborough Borough ... .. | W. Holdsworth ... ..   | ✓ 9          | ...            |
| 14. Milburns Model ... ..         | H. Milburn ... ..      | 25           | ...            |
| 15. Mansfield Colliery ... ..     | W. Halliwell ... ..    | 24           | 4.             |
| 16. Nelson Old ... ..             | W. Halliwell ... ..    | 20           | ...            |
| 17. Rotherham Borough ... ..      | W. E. Wilson ... ..    | 17           | ...            |
| 18. Northfield Institute ... ..   | J. Boothroyd ... ..    | ✓ 8          | ...            |
| 19. Rushden Rifles ... ..         | C. H. Baker ... ..     | 15           | ...            |
| 20. St. Albans City ... ..        | R. Ryan ... ..         | ✓ 2          | ...            |
| 21. South Bank Old ... ..         | T. Winter ... ..       | 10           | ...            |
| 22. Silverdale Town ... ..        | R. E. Smith ... ..     | 27           | ...            |
| 23. Swanwick Colliery ... ..      | J. Gladney ... ..      | 22           | ...            |
| 24. South Derwent ... ..          | J. A. Greenwood ... .. | 12           | ...            |
| 25. Scwerby Bridge ... ..         | G. T. Bancroft ... ..  | ✓ 1          | 5.             |
| 26. Sirocco (Belfast) ... ..      | R. Jones ... ..        | 21           | ...            |
| 27. Ystalyfera ... ..             | E. J. Evans ... ..     | 11           | ...            |



10.30.—NORTH TOWER GARDENS.

# Brass Band Contest for the "Daily Graphic" Challenge Cup

and other Prizes. (See page 5).

Adjudicator:—Mr. C. WARD.

## JUNIOR CUP SECTION.

Test Piece—Selection ..... "MARITANA" ..... Wallace

|     | <i>Band.</i>                           | <i>Conductor.</i>       | <i>Draw.</i> | <i>Result.</i> |
|-----|--|-------------------------|--------------|----------------|
| 1.  | Bwinning and Blackwell Colliery ... .. | T. F. Ward ... ..       | ...          | ...            |
| 2.  | Bedford Town ... ..                    | C. Johnson ... ..       | ...          | ...            |
| 3.  | Bournville ... ..                      | F. W. Sylvester ... ..  | ...          | ...            |
| 4.  | Bescot (L. & N.W.) ... ..              | I. Perrin ... ..        | ...          | ...            |
| 5.  | Barnet ... ..                          | T. A. Cheek ... ..      | ...          | ...            |
| 6.  | Codnor Old ... ..                      | T. Hand ... ..          | ...          | ...            |
| 7.  | Chesham ... ..                         | R. Moore ... ..         | ...          | ...            |
| 8.  | Dinnington Colliery ... ..             | W. Lerigo ... ..        | ...          | 3.             |
| 9.  | Dartford Silver ... ..                 | H. Gilder ... ..        | ...          | ...            |
| 10. | Donnington Wood Institute ... ..       | R. Ryan ... ..          | ...          | ...            |
| 11. | Enfield Town ... ..                    | F. Dimmock ... ..       | ...          | ...            |
| 12. | Fleet Town ... ..                      | J. Ritchie ... ..       | ...          | ...            |
| 13. | Fulham Borough ... ..                  | E. J. Richardson ... .. | ...          | ...            |
| 14. | Hemsworth Colliery ... ..              | A. Owen ... ..          | ...          | 1.             |
| 15. | Marriner's, Keighley ... ..            | A. Gray ... ..          | ...          | ...            |
| 16. | Moor Row Old ... ..                    | J. E. Fidler ... ..     | ...          | ...            |
| 17. | North London Excelsior ... ..          | J. W. Pursglove ... ..  | ...          | ...            |
| 18. | Northfield Institute ... ..            | C. Nash ... ..          | ...          | ...            |
| 19. | Reigate Town ... ..                    | J. E. Unwin ... ..      | ...          | ...            |
| 20. | Wilson Line, Hull ... ..               | W. Brocklesby ... ..    | ...          | 4.             |
| 21. | West Crawley Temperance ... ..         | A. Williams ... ..      | ...          | ...            |
| 22. | Willington Silver ... ..               | J. B. Wright ... ..     | ...          | ...            |
| 23. | Woodlands Village ... ..               | S. Taylor ... ..        | ...          | 2.             |
| 24. | 3rd East Anglian ... ..                | W. Gilyatt ... ..       | ...          | ...            |



## 10.30.—SCHOOL OF ART.

# Brass Band Contest for the "People" Challenge Shield

and other Prizes. (See Page 5).

Adjudicator:—Mr. W. NUTTALL.

## PRELIMINARY SHIELD SECTION.

Test Piece—Selection ..... "APOLLO" (English Airs) ..... W. Rimmer

| <i>Band.</i>                          | <i>Conductor.</i>     | <i>Draw.</i> | <i>Result.</i> |
|---------------------------------------|-----------------------|--------------|----------------|
| 1. Bloxwich Imperial ... ..           | G. Carrington ... ..  | 23           | ...            |
| 2. Bentley Colliery 4... ..           | A. Gray ... ..        | 21           | 2.             |
| 3. Blakesley Silver ... ..            | C. F. Brown ... ..    | 7            | ...            |
| 4. Black Dike Juniors 2. ... ..       | W. Halstead ... ..    | 15           | ...            |
| 5. Barnsley Borough ... ..            | H. Spedding ... ..    | 24           | ...            |
| 6. Bridlington Excelsior 1. ... ..    | W. Heap ... ..        | 11           | 6.             |
| 7. Bolton Subscription ... ..         | J. C. Taylor ... ..   | 5            | 4.             |
| 8. Cophorne ... ..                    | W. J. Coverley ... .. | 10           | ...            |
| 9. Camborne Town ... ..               | W. Uren ... ..        | 18           | ...            |
| 10. Caterham United ... ..            | C. Hunt ... ..        | 4            | ...            |
| 11. Doncaster Subscription ... ..     | F. Berry ... ..       | 9            | ...            |
| 12. Horley Town ... ..                | G. N. Banks ... ..    | 3            | ...            |
| 13. Horden Colliery ... ..            | E. Coltman ... ..     | 19           | ...            |
| 14. Hanwell Town ... ..               | E. Brophy ... ..      | 8            | ...            |
| 15. Horbury ... ..                    | N. Thorpe ... ..      | 6            | ...            |
| 16. Hornsby ... 3 ... ..              | E. Bausor ... ..      | 13           | ...            |
| 17. Higham Ferrers Town ... ..        | J. K. Skinner ... ..  | X            | ...            |
| 18. Kingswood Evangel ... ..          | A. Gray ... ..        | 14           | ...            |
| 19. Liverpool Road (L. & N.W.) ... .. | T. Eastwood ... ..    | 20           | ...            |
| 20. Manvers Main Ambulance ... ..     | C. Elsom ... ..       | 1            | ...            |
| 21. North Middlesex ... ..            | W. C. Belsham ... ..  | 2            | ...            |
| 22. Newhall St. John's ... ..         | E. Booth ... ..       | 17           | ...            |
| 23. Sutton Red Cross ... ..           | H. Harding ... ..     | 22           | 3.             |
| 24. Tredegar Workmen's ... ..         | E. Shaw ... ..        | 12           | ...            |
| 25. Wolverton Town ... ..             | H. Westley ... ..     | 16           | ...            |



10.30.—SOUTH TOWER END OF GRAND TERRACE.

## Brass Band Contest for the "Daily Mirror" Challenge Cup

and other Prizes. (See page 5).

Adjudicator:—MR. G. WADSWORTH.

### PRELIMINARY CUP SECTION.

Test Piece—Fantasia ..... **"HARVEST HOME"** ..... S. Cope

|     | <i>Band.</i>                         | <i>Conductor.</i>          | <i>Draw.</i> | <i>Result</i> |
|-----|--------------------------------------|----------------------------|--------------|---------------|
| 1.  | Ashby and District Men's Association | ... —. Cassel ...          | ...          | ...           |
| 2.  | Aldbourne                            | ... A. Stacey ...          | ...          | ...           |
| 3.  | Battersea Tent                       | ... J. Jackson ...         | ...          | ...           |
| 4.  | Biggleswade                          | ... C. W. W. Birch ...     | ...          | ...           |
| 5.  | Birdwell and District                | ... J. A. Martin ...       | ...          | ...           |
| 6.  | Brantham Xylonite Works              | ... J. Naylor ...          | ...          | ...           |
| 7.  | Chesterfield Town                    | ... J. Sheppard ...        | ...          | ...           |
| 8.  | Denholme                             | ... W. Heap ...            | ...          | ...           |
| 9.  | Edmonton Temperance                  | ... W. Halstead ...        | ...          | ...           |
| 10. | Enfield Temperance                   | ... T. A. Cheek ...        | ...          | ...           |
| 11. | Fairford                             | ... T. R. Preston ...      | ...          | ...           |
| 12. | G.C. & Metropolitan Railway          | ... R. Moore ...           | ...          | ...           |
| 13. | Hoyland                              | ... J. A. Wadsworth ...    | ...          | ...           |
| 14. | Kibworth Temperance                  | ... W. Norman ...          | ...          | ...           |
| 15. | Leatherhead and Bookham              | ... P. Casson ...          | ...          | ...           |
| 16. | Rowntree's Cocoa Works               | ... W. Halstead ...        | ...          | ...           |
| 17. | Royston (Herts)                      | ... F. Dimmock ...         | ...          | ...           |
| 18. | Rotherhithe Men's Own                | ... W. W. Grant ...        | ...          | ...           |
| 19. | Rhymney                              | ... W. M. Williams ...     | ...          | ...           |
| 20. | Royston Subscription                 | ... G. Buckle ...          | ...          | ...           |
| 21. | South Hiendley                       | ... J. Cavill ...          | ...          | ...           |
| 22. | Swinton                              | ... W. Wilson ...          | ...          | ...           |
| 23. | Shoreditch Borough                   | ... R. E. Aldous ...       | ...          | ...           |
| 24. | Sheffield Tramways                   | ... R. Lundy ...           | ...          | ...           |
| 25. | Torquay Town                         | ... G. Halstaff, Junr. ... | ...          | ...           |
| 26. | Wilsdon and District                 | ... W. Rushton ...         | ...          | ...           |
| 27. | Wigstons Temperance                  | ... C. Moore ...           | ...          | ...           |



10.30.—NEAR THE CANADIAN BUILDING TOWER.

## Brass Band Contest for the "Champion Journal" Challenge Cup

and other Prizes. (See page 6).

Adjudicator:—Mr. J. H. CARTER.

### CONSOLATION CUP SECTION.

Test Piece—Selection ..... **"APOLLO"** (English Airs) ..... W. Rimmer

|     | <i>Band.</i>                  | <i>Conductor.</i> | <i>Draw.</i> | <i>Result.</i> |
|-----|-------------------------------|-------------------|--------------|----------------|
| 1.  | Boscombe Temperance           | C. Tiller         | ...          | ...            |
| 2.  | Brithdir and Cwmayfiog        | F. Brooks         | ...          | ...            |
| 3.  | Birkenhead Borough            | J. G. Dobbing     | ...          | ...            |
| 4.  | Callender's Cable Works       | J. W. English     | ...          | 2.             |
| 5.  | Camden Unity                  | S. Cope           | ...          | ...            |
| 6.  | Caerau                        | W. Jury           | ...          | ...            |
| 7.  | Essington Village             | W. Guest          | ...          | ...            |
| 8.  | Hitchin                       | T. Cannon         | ...          | ...            |
| 9.  | Hull, King's Hall             | A. Gibson         | ...          | ...            |
| 10. | Hull, Queen's Hall            | H. Lister         | ...          | ...            |
| 11. | Huthwaite Old                 | J. B. Cooper      | ...          | ...            |
| 12. | King's Heath                  | J. C. Hewes       | ...          | ...            |
| 13. | Knottingley                   | J. W. Stamp       | ...          | ...            |
| 14. | Lamorbey and Sidecup          | G. Poynter        | ...          | ...            |
| 15. | Letchworth                    | A. Snowden        | ...          | ...            |
| 16. | Leighton Buzzard Excelsior    | C. Everett        | ...          | ...            |
| 17. | Manea Excelsior               | J. G. Jubb        | ...          | ...            |
| 18. | Northfleet                    | J. Jackson        | ...          | ...            |
| 19. | Newbury Temperance            | J. L. Liddle      | ...          | ...            |
| 20. | Oxted                         | O. H. Taylor      | ...          | ...            |
| 21. | Rotherham and Masborc' Junior | E. N. Draycott    | ...          | ...            |
| 22. | South Shore Subscription      | J. A. Greenwood   | ...          | ...            |
| 23. | St. Saviour's, Cardiff        | W. J. Long        | ...          | ...            |
| 24. | Tiverton                      | W. B. Loosemore   | ...          | ...            |
| 25. | Wiggenhall United             | C. I. Smith       | ...          | ...            |
| 26. | Walthamstow Lighthouse        | E. Honey          | ...          | ...            |
| 27. | Willesden Junction            | C. McManus        | ...          | ...            |
| 28. | Woolwich Borough              | H. Harvey         | ...          | ...            |



## 11.0.—IN THE CONCERT ROOM.

**GRAND CHAMPIONSHIP BRASS BAND CONTEST**

FOR THE

**One Thousand Guinea Challenge Trophy, "Daily Telegraph"  
Challenge Cup**

and other Prizes. (See pages 3 - 4).

Adjudicators:—Lieut. J. ORD HUME, L.F., Messrs. JAMES BRIER and WALTER REYNOLDS.

**CHAMPIONSHIP SECTION.**Test Piece—Selection from ..... **"LES HUGUENOTS"** ..... Meyerbeer  
Expressly arranged by William Rimmer

| <i>Band.</i>                     | <i>Conductor.</i>    | <i>Draw.</i> | <i>Result.</i> |
|----------------------------------|----------------------|--------------|----------------|
| 1. Batley Old ... ..             | A. Gray ... ..       | ...          | 5.             |
| 2. Birmingham City ... ..        | I. Perrin ... ..     | ...          | ...            |
| 3. Clydebank Burgh ... ..        | E. Sutton ... ..     | ...          | ...            |
| 4. Cleckheaton Victoria ... ..   | C. Stott ... ..      | ...          | ...            |
| 5. Dannemora ... ..              | R. Richford ... ..   | ...          | ...            |
| 6. Fodens' Motor Works ... ..    | W. Halliwell ... ..  | ...          | 2              |
| 7. Gossages' Soap Works ... ..   | W. Rimmer ... ..     | ...          | ...            |
| 8. Gwaun cae Gurwen ... ..       | T. J. Rees ... ..    | ...          | ...            |
| 9. Goodshaw ... ..               | A. Owen ... ..       | ...          | ...            |
| 10. Hebden Bridge ... ..         | W. Halliwell ... ..  | ...          | ...            |
| 11. Irwell Springs ... ..        | A. Owen ... ..       | ...          | ...            |
| 12. Kettering Rifles ... ..      | T. R. Preston ... .. | ...          | ...            |
| 13. Kettering Town ... ..        | J. Gladney ... ..    | ...          | ...            |
| 14. Luton Red Cross ... ..       | W. Halliwell ... ..  | ...          | ...            |
| 15. Murton Colliery ... ..       | A. Owen ... ..       | ...          | 7.             |
| 16. Norland ... ..               | E. Beaumont ... ..   | ...          | ...            |
| 17. Perfection Soap Works ... .. | W. Halliwell ... ..  | ...          | 1.             |
| 18. Rushden Temperance ... ..    | A. Owen ... ..       | ...          | ...            |
| 19. South Moor Colliery ... ..   | A. Holden ... ..     | ...          | ...            |
| 20. St. Hilda Colliery ... ..    | A. Gray ... ..       | ...          | ...            |
| 21. Shaw ... ..                  | W. Halliwell ... ..  | ...          | 4.             |
| 22. Skinningrove Silver ... ..   | G. Hawkins ... ..    | ...          | ...            |
| 23. Spencer's Steel Works ... .. | W. Halliwell ... ..  | ...          | 6.             |
| 24. Wingates Temperance ... ..   | A. Owen ... ..       | ...          | 3.             |



## 11.0.—IN THE PAVILION, SMALL HOLDING SETTLEMENT.

**Reed Band Contest for the "Pearson's Weekly" Challenge Shield**

and other Prizes. (See Pages 5 - 6.)

Adjudicator :—Mr. HERBERT GODFREY.

**REED BAND SECTION.**Test Piece—Overture ..... **"RAYMOND"** ..... Thomas

| <i>Band.</i>                                 | <i>Conductor.</i>   | <i>Draw.</i> | <i>Result.</i> |
|--|---------------------|--------------|----------------|
| 1. Camborough Military                       | Carl Taylor         | ...          | ...            |
| 2. Croydon Corporation Tramways              | W. Ellis            | ...          | ...            |
| 3. Clarnico Fire Brigade                     | J. B. Mackinnon     | ...          | ... 4.         |
| 4. Friends' Institute, Birmingham            | J. Dean             | ...          | ...            |
| 5. Graysilver                                | J. H. Parnum        | ...          | ...            |
| 6. Greenwich Bcrough                         | T. Lyons            | ...          | ...            |
| 7. Stratford Gas Light Co.                   | A. J. Williams      | ...          | ...            |
| 8. Illogan Military                          | Rev. H. Oxland      | ...          | ...            |
| 9. Long Grove Military                       | C. Hammond          | ...          | ...            |
| 10. Little Bromwich Adult School             | T. Youel            | ...          | ...            |
| 11. Moggs Military                           | H. Mogg             | ...          | ... 3.         |
| 12. Norwood Town                             | A. W. Lamb          | ...          | ...            |
| 13. Redhill Town                             | F. Rowe             | ...          | ...            |
| 14. Reading Temperance                       | W. Farr             | ...          | ...            |
| 15. Street                                   | F. E. Huish         | ...          | ...            |
| 16. Stourport                                | B. Evers            | ...          | ...            |
| 17. Stoke-on-Trent Military                  | F. C. Turner        | ...          | ...            |
| 18. Wells City                               | H. Gonzaque Riviere | ...          | ...            |
| 19. 5th Buffs                                | W. P. Thorne        | ...          | ... 2.         |
| 20. 1st Welsh (Howitzer) Brigade             | S. Hanney           | ...          | ... 1.         |
| 21. 5th Brigade (C.P.) Royal Sussex Regiment | T. H. Rich          | ...          | ...            |



## 1.30.—NEAR THE LOWER LAKE.

**Boys' Band Contest for the "Woods" Challenge Cup****and other Prizes.** (See Page 6.)

Adjudicator:—Mr. G. TOWLE.

**BOYS' BAND SECTION.**

Test Pieces—(a) March ..... **"RESOLUTE"** ..... *Newby*  
 (b) Fantasia ..... **"LUCIA"** ..... *Donizetti*

| <i>Band.</i>                    | <i>Conductor.</i>  | <i>Draw.</i> | <i>Result.</i> |
|---------------------------------|--------------------|--------------|----------------|
| 1. Sidecup Homes ... ..         | R. Bonner ... ..   | ...          | ...            |
| 2. Shirley Schools ... ..       | J. Machell ... ..  | ...          | 2.             |
| 3. St. Nicholas' Schools ... .. | P. McDonald ... .. | ...          | ...            |
| 4. St. Vincent's Schools ... .. | F. McDonald ... .. | ...          | ...            |
| 5. Shaftesbury Schools ... ..   | W. Prosser ... ..  | ...          | 3.             |
| 6. St. Pancras Schools ... ..   | W. Woodland ... .. | ...          | 1.             |

## 7.30.—HANDEL ORCHESTRA.

NOTE.—The tickets for the Reserved Seats will be on sale at the Ticket Office, near the Main Entrance, and at the Ticket Box outside the Concert Room, **all day**, and tickets for the unreserved Seats will be on sale at the different pay boxes at 5 o'clock. To save disappointment, Reserved Seat Tickets should be bought as early as possible, as many, last year, left it until it was too late.





# GRAND FESTIVAL CONCERT

BY THE

## MASSED BANDS.

(Under the direction of Mr. J. HENRY ILES, Officier d'Academie Française).

---

### MASSED BANDS:

**Batley Old Band (Yorkshire).**  
**Foden's Motor Works Band (Cheshire).**  
**Gossage's Soap Works Band (Lancashire).**  
**Irwell Springs Band (Lancashire).**  
**Luton Red Cross Band (Bedfordshire).**  
**Perfection Soap Works Band (Lancashire).**  
**Shaw Band (Lancashire).**  
**Spencer's Steel Works Band (Northumberland).**

---

At the Grand Organ ... .. Mr. DAVID CLEGG.  
 Conductor ... .. Mr. J. HENRY ILES.

---

**7.0.—GRAND ORGAN RECITAL by Mr. DAVID CLEGG,** the world-renowned Organist and Composer (who has given over 3,000 Recitals in all the principal cities of Europe and America).

- (1) March Fanfare and Organ Rhapsody ..... *Clegg*  
 (2) Gravement from Organ Fantasia in G Major ..... *Bach*  
 (3) Poem for Modern Concert Organ  
       " The Rugged North " ..... *Clegg*

(Founded on Norse Legends).



7.30.

## Programme of Concert.

- The National Anthem ..... THE MASSED BANDS  
 1. Coronation Fanfares ..... *J. E. Borland, Mus. Doc.*

### THE MASSED BANDS.

These Fanfares were played in sections at the Coronation of Their Most Gracious Majesties King George and Queen Mary at Westminster Abbey on the 22nd June, 1911. The Fanfares proclaim—

1. The King's Arrival.
2. The Recognition.
  - (a) To the East. (b) To the South. (c) To the West, and (d) To the North.
3. The Crowning.
4. The Homage.

NOTE.—A slight interval marks the division of the sections.

2. March ..... **"Fearless Footsteps"** ..... *W. Rimmer*

### THE MASSED BANDS.

Mr. William Rimmer is the foremost writer of music for Bands. His countless original compositions are noted for pure melody and masterly arrangement. The present, which is one of his latest marches, has an inspiring first subject, a broad melody for the second strain, a pleasing air for the first strain of Trio, and some massive chords in the second strain, with a repetition of the previous Air.

- 3.—Grand Selection ..... **"Rienzi"** ..... *Wagner*

### THE IRWELL SPRINGS PRIZE BAND.

The Irwell Springs Band is well known at the National Band Festival, having been successful in winning the Championship on two separate occasions, *i.e.*, in 1905 and 1908. They were the holders of the One Thousand Guinea Trophy for these years and are Bronze and Silver Medallists. The Selection from "Rienzi" opens with an extract from the Overture and introduces the Prayer of Rienzi from the 5th Act. (2) Horn Solo, "Ma del bronzo" (Rienzi) and Chorus. (3) Recitative of Rienzi, "E giunto il di" (Trombone Solo), Chorus, "S'alzi di Trombe," and "The Church's Call to Arms." (4) Recit. of Rienzi, "O di pace" (Trombone), Air (Cornet) and Chorus, "Io gia diedia." (5) Air (Rienzi), "E Col tuo braccio" (Euphonium). (6) Chorus, "Sublime guiderdon," and Finale.

- 4.—Euphonium Solo ..... **"Land of Hope and Glory"** ..... *Elgar*

### THE MASSED BANDS.

This Song is based on the beautiful melody in the Trio of the composer's earliest of the series of the "Pomp and Circumstance" Marches. Both March and Song have attained universal popularity and the present arrangement is included in the programme as apropos to the recent great national event—the Coronation of King George and Queen Mary.



5. (a) Hymn ..... **"St. Petersburg"** .....  
 (b) Hymn ..... **"St. Anns"** .....

THE MASSED BANDS.

Hymn-music is particularly suitable for displaying the broad, organ-like, tone of Brass Bands. In the rendering of these hymns the contrast is afforded between the softness of tone of the bands *minus* Trombones and the grandeur of the full tone of the massed Bands *with* Trombones.

6. Grand Selection ..... **"Flying Dutchman"** ..... *Wagner*

THE SHAW PRIZE BAND.

The Shaw Band is another well-known Lancashire Band and their success in winning the Championship in 1909 was very popular, and for this victory they became Bronze Medallists. Like Irwell Springs Band, the members are workers in the large factories in their district (Oldham) and find all their recreation in the study of music. The synopsis of their Selection is as follows:—(1) Allegro and Andante—Extract from Overture. (2) Allegro—Chorus of Norwegian Sailors from Act 3. (3) Andante—Erik's Cavatina from Act 3, "In that fair day" (Euphonium Solo). (4) Allegro—Storm music from Act 3, "Away to sea." (5) Lento—"Feel'st thou the grief" from Senta and Erik's duet in Act 2. (6) Allegretto (6-8)—Extract from Daland and the Dutchman's duet in Act 1, "I have, alas! neither wife nor child" (Trombone and Euphonium). (7) Andante from Senta and the Dutchman's duet, Act 2, "He standeth there with all his griefs believe me" (Baritone and Euphonium). (8) Allegro molto—A further extract from the same duet, "Why is my heart so wildly beating," and (9) Allegro Vivace from the Finale of the Overture.

7. Prize March ..... **"Resolute"** ..... *F. Newby*

THE MASSED BANDS.

Each year the proprietors of the "Champion Journal" of music for bands, promote a competition amongst amateur composers of music. This year the Adjudicators (Messrs. W. Rimmer and S. Cope) divided the prize between two competitors: Mr. Newby and Mr. Moorhouse. Mr. Newby's March is played for the first time this evening. It will be noted that it contains some effective writing, particularly the Cornet duet in the first subject with an answering subject by Baritone and Euphonium, and in the counter-subjects of the second strain.

8. Grand Selection ..... **"Gems of Schubert"** ..... *Arr. by W. Rimmer*  
 FODEN'S MOTOR WORKS PRIZE BAND.

Foden's Band is one of the well-known Works Bands for which the North of England is famous. The firm started the Band with the determination of having one of the finest combinations in the country and they speedily achieved their object. The Band won the 1,000 Guinea Trophy last year and are Bronze Medallists, and will, to-night play the test-piece with which they were victorious.



## 9. Bridal Hymn and Finale to Overture,

**"William Tell"** ..... *Rossini*

**THE MASSED BANDS.**

The words of the Bridal Hymn are as follows:—

"O! Light of Heaven, shine down and bless us,  
"Let holy peace possess us,  
"Then shall their days be sweet and tranquil,  
"O! may their joy throughout life endure."

The spirited Finale forms a complete contrast to the devotional character of the music to the above words. The Finale is deemed a fitting close for this National Band Festival Concert. It is in reality an Orchestral piece, and in consequence of the technical difficulties in its execution by Brass Bands, a successful rendering of it is a triumph for arranger and performers.

NOTE.—Immediately after the performance of the last piece, the PRIZE WINNERS in the various competitions will be announced, and the names of the successful Bands will appear on the screen.

YOU MUST

# See The MAORIS

In their Novel and Charming Performances, including  
— Maori Love Songs, War Dances, and Games. —

**IWA,** The Beautiful  
Maori Singer.

**MAGGIE PAPANURA,** The Famous  
Guide.

**CRYSTAL PALACE THEATRE TO-DAY at 3.30 and 8.**

:: :: Prices - - 2/-, 1/-, and 6d. :: ::

**WILD AUSTRALIA** **TO-DAY**  
At 3.30 & 6 p.m.

... ON THE PAGEANT GROUND. ...

**THRILLING SCENES from the AUSTRALIAN BUSH.**

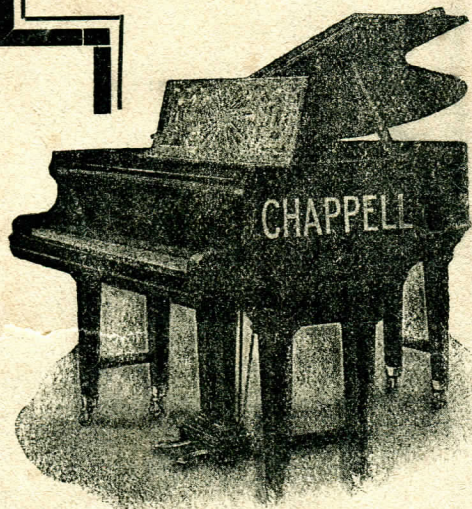
Prices - - 3/-, 2/-, 1/-, and 6d.



The Triumph of British Art.

# CHAPPELL

## PIANOS.



"The British Piano Pre-eminent."

"The Product of British Skill and Industry."

The following are a few of the many eminent artistes using the Chappell Piano :

BACKHAU    KUBELIK  
KREISLER    MELBA  
CARUSO    STRAUSS

A Perfect

### "BABY" GRAND

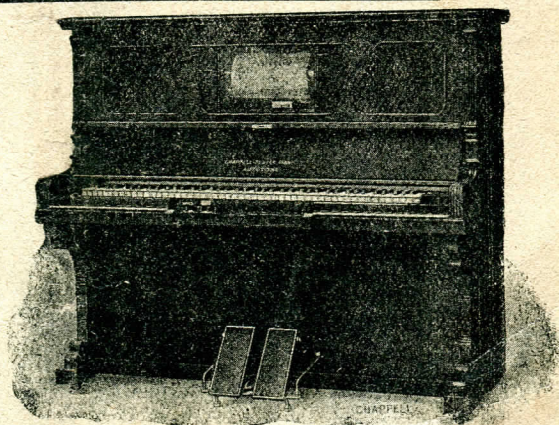
Length 5ft., Width 4ft. 7 $\frac{1}{2}$ in.  
Complete Metal Frame. Over-  
strung, etc. Compass 7 octaves.  
In Rosewood, Ebonized, Walnut  
and Mahogany.

The  
**CHAPPELL  
AUTOTONE**

"A perfect Piano and  
Player combined in one  
case."

"A Piano AND a  
Musical Education."

Descriptive Art List Free on  
Application—or call and inspect  
our Enormous Stock.



**CHAPPELL'S** *Piano and  
Player-Piano* **GALLERIES,**  
50, NEW BOND STREET, LONDON, W.