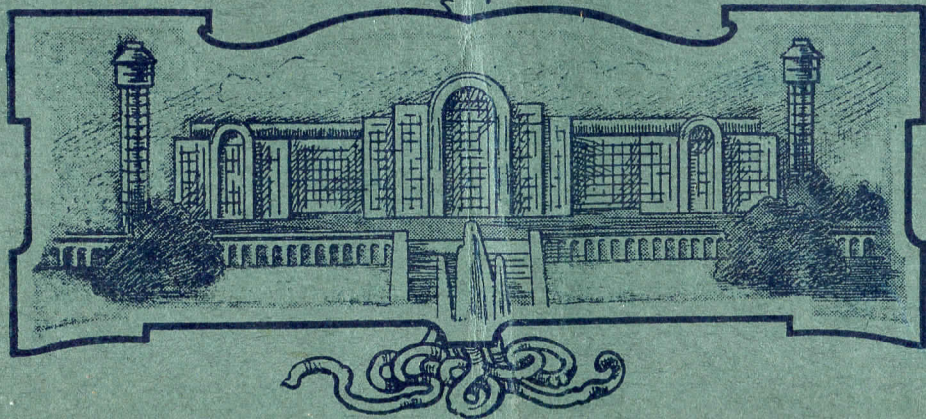


# CRYSTAL PALACE

OPENED  
1854

PARK & GARDENS  
200 ACRES

PROGRAMME  
TWO PENCE





# CRYSTAL PALACE.

GEORGE. O. STARR

General Manager.

Programme for Saturday, Sept. 28th, 1912.

## THE THIRTEENTH GREAT NATIONAL BAND FESTIVAL

Under the direction of Mr. J. HENRY ILES (Officier d'Académie Française)

NOTE.—The Director's Office will be outside the Concert Room.

## THE GREAT CHAMPIONSHIP CONTEST for the Magnificent Challenge Trophy, Value 1,000 Guineas.

### LIST OF WINNERS.

- |                                       |   |
|---------------------------------------|---|
| 1900—Denton Original (Lancashire).    | 1905—Irwell Springs (Lancashire).         |
| 1901—Lee Mount (Yorkshire).           | 1906-7—Wingates Temperance (Lancashire).  |
| 1902—Black Dike Mills (Yorkshire).    | 1908—Irwell Springs (Lancashire).         |
| 1903—Besses o' th' Barn (Lancashire). | 1909—Shaw (Lancashire).                   |
| 1904—Hebburn Colliery (Durham).       | 1910—Foden's Motor Works (Cheshire).      |
|                                       | 1911—Crosfield's Soap Works (Lancashire). |

Test-piece ... .. Selection from "WILLIAM TELL" ... .. Rossini

Arranged expressly for this Festival by William Rimmer.

(For full particulars of Prizes, etc., see pages 4 & 5).

### A GRAND MUSICAL EXHIBITION

In which all the leading Firms of Musical Instrument Manufacturers and others will exhibit, will be held in the **North Nave**, opposite the Theatre.

The following well-known Firms, amongst others, will have valuable exhibits:—

Besson & Co., Ltd. (London), Boosey & Co. (London), Chappell & Co., Ltd. (London), Gisborne & Co. (Birmingham), Hawkes & Son (London), Alfred Hays (London), Joseph Higham, Ltd. (Manchester), Kessels & Co. (London), H. Laubach (London), Jerome Thibouville-Lamy & Co. (London), Mallet, Porter & Dowd, Ltd. (London), Montague Brothers (London), B. Podmore & Co. (Southport), Rudall, Carte & Co., Ltd. (London), The Uniform Clothing & Equipment Co. (London), The "Champion Journal" and the "British Bandsman."

**SPECIAL NOTICE.**—The "Little Red Book" containing all the Test-pieces for the Festival, together with Special Notes on the Selections, can be obtained at the "BRITISH BANDSMAN" Stall, outside the Concert Room, Price 1s. net.

**PICTORIAL POSTCARDS and POSTAGE STAMPS** can be obtained at the Stall outside the Concert Room. *Postal Collections at 12.30, 2.35, 3.50, 4.45, 8.0 p.m. from Pillar Box (near Ivory Stall).*

THE ST. JOHN'S AMBULANCE DEPOT is situate in South Nave  
(Clock End) near Crystal Fountain.

IN THE NORTH TOWER GARDENS.

**STUPENDOUS ATTRACTION**

ENTITLED

**THE FAIRY ARCHIPELAGO.**

THE LOFTIEST AND LONGEST WATER CHUTE ON EARTH,

**RUSHING THE CANADIAN RAPIDS THROUGH THE ROCKIES!**

Marvellous Imitation of Nature's Wonders. Gliding in the Mountain Streams through the Craigs and Caves to the Lakes below.  
**Trips Round the Lake through the Marvellous Grottoes and Fairy Caves in Electric Canoes.**

ON ISLAND AND PROMENADES.

Startling New Attractions—The HUMAN LAUNDRY, Novel and Amusing, Pell Mell, Haunted Swing, Castle Maze, Helter Skelter, Ornamental Swimmers, Hyatt's Juvenile Roundabout and Sports and Games, Miniature Bisley, and numerous others.

**THE FOLLOWING ARE OPEN ALL DAY:  
IN SOUTH NAVE.**

**HAIRDRESSING SALOONS.** Special Rooms for LADIES' HAIRDRESSING. All arrangements on the most modern and improved system. Every Toilet Requisite, together with a choice selection of Brushes, Combs, Mirrors, Hand-glasses, and all the New French Perfumes and Cosmetics. MANICURE and CHIROPODY. Hats Ironed. Open 10 till 8.

**NOVELTY COURT.** Popular Games and Amusements

**South-East Gallery.**—New Series of **NATURAL HISTORY TABLEAUX**, including **Indian Jungle.**

**Egyptian, Greek, Roman, Alhambra, Byzantine, Mediæval and Renaissance Courts.**—Full of magnificent Replicas of the World's Priceless Art Treasures.

*Admission Free.*—**AQUARIUM.** Containing the finest collection of Freshwater Fish in the United Kingdom. It consists of 13 Tanks comprising many descriptions, including Sun Fish, Spiegel Carp (weighing 3 and 4 lbs.), Rainbow Trout, Japanese Fan Tails, Cat Fish, and Thunder Fish. In all about 32 varieties and 600 specimens

**THE MONKEY HOUSE AND BIRDS.** There are about 150, amongst which is a very fine specimen of a Golden Eagle, Owls, Raven, Curassows, Doves, etc. 30 Monkeys of various species. Crocodiles, Adders and Salamanders, and various animals, amongst which are Jackalls, Dingo Dog, Badgers, etc.

In the **Caricature Salon, South Nave.** The weird and screamingly funny **DISTORTING MIRRORS.** The visitor sees himself distorted in all shapes and sizes, every mirror showing a distinct distortion—from dwarf to giant—from skeleton to corpulency—with endless arms and legs. Some of the mirrors twisting the body into several different shapes. This Entertainment is distinctly novel and original, and created a great sensation at the Paris Exhibition. Open all day. No waiting. *Admission 3d.*

**North-East Gallery.**—**ETHNOLOGICAL TABLEAUX.**

**North-West Gallery.**—**PORTRAIT GALLERY (Sculpture).** Busts of Famous Men of all Periods and Countries.

**IN GROUNDS, LOWER LAKE.**  
**The World-Famed Collection of Antediluvian Animals,** Amusing, Interesting and Instructive.

**At Bottom of Grounds—  
THE BOATING LAKE.**

Pleasure Boats for hire all day long.

**THE SWITCHBACK RAILWAY.**

**North Side of Grounds—  
THE MAZE.**

A never ending source of hilarious enjoyment.  
Adults, 3d. Children, 1d.

**New Dining Room** (South Nave, overlooking Gardens), daily from 6 till 9.

MODERATE TARIFF.

DINNERS, 5/-, ALSO a la Carte and Grill till 10 p.m. J. LYONS & CO., LTD. Caterers by appointment.

# The All-Red Route Tour of the Grounds.

The most wonderful Railway Trip ever offered to the Public, setting out the vast resources of the Empire.

**SOUTH AFRICAN GOLD AND DIAMOND MINES,  
AUSTRALIAN VINEYARDS AND SHEEP SHEARING,  
NEWFOUNDLAND FISHERIES, etc.**

Trains run every few minutes from 12 noon until 10 p.m.

Take Tickets at the Canadian Station (near Low Level), or South African Station (near Centre Avenue).

## **IN GROUNDS,**

### **NEAR LOW LEVEL STATION ENTRANCE.**

Great Attractions including—

#### **THE FIGURE EIGHT COASTER.**

A pleasant and thrilling ride. Admission, Adults, 3d., Children, 2d.

#### **THE BILLIKEN JOY WHEEL.**

One continual Scream. Admission, Adults, 3d. Children, 2d.

#### **THE RIVER CAVES.**

A delightful and interesting trip through the Caves of the Empire.  
Admission, Adults, 3d., Children, 2d.

#### **THE CASTLE OF FUN.**

Impossible to describe. Roars of laughter.  
Admission, Adults, 2d., Children, 1d.

#### **THE FLYING MACHINE.**

A most exciting and exhilarating flight through space at the rate of 50 miles an hour.  
Adults, 3d. Children, 2d.

### **On the extreme left of the Low Level Entrance.**

The stately building of the Government of Canada at Ottawa; the finest exhibition building ever erected. Also Grand Trunk & Canadian Pacific Railway Pavilions.

### **Near Cycle Track.**

#### **ARCHERY GROUND FOR PRACTICE.**

#### **THE EDDYSTONE RIDE.**

This is the greatest amusement ride in existence. The trip begins by a dive through a tunnel. Then circling round a lighthouse, until the summit is reached, a dash across a chasm follows. A race up and down amidst mountain scenery, and a final plunge into a lake of water complete the exciting journey.

### **North Tower Gardens.**

#### **THE NORTH TOWER.**

Magnificent Panoramic view over 8 Counties.  
Ascend by Lift.  
Adults, 3d. Children, 1d.

### **Near the Restaurant, South Nave.**

#### **SEE THE BABY INCUBATORS WITH LIVING BABIES.**

Admission, 3d.

### **In Grounds between Low Level Entrance and Football Pavilion.**

#### **EMPIRE RIFLE & REVOLVER RANGE.**

Moving and Stationary Targets. Latest Pattern Rifles and Revolvers.

### **Times of Entertainments, Competitions, etc.**

ELECTRIC THEATRE (*at intervals*).

### **CINEMATOGRAPH DISPLAY**

#### **Programme items**

**SEPTEMBER 28th.**

Kelly in Battle.

Marseilles.

The Pink Pyjama Girl.

Percy's Diminishing Bike.

Wilful Meg.

The Triumph of Right.

**ADMISSION FREE.**

**A few Reserved Seats, 3d. each.**



# THE THIRTEENTH GREAT NATIONAL BAND FESTIVAL.

---

## PRIZES.

### CHAMPIONSHIP SECTION.

**First Prize.**—The Championship of Great Britain and the Colonies, the winners of which will be the holders for the year (under the conditions referred to in the Regulations) of the **NATIONAL CHALLENGE TROPHY**, of the value of **1,000 Guineas**, with a Certificate for framing and a Cash Prize of **£40**.

Each Member of the Band, including the Bandmaster and Secretary, will also be presented with the **Crystal Palace Championship Bronze Medal, with Bar and Clasp**. (Members of Bands winning the Trophy twice will be presented with the same Medal in solid Silver; and to Members of Bands winning the Trophy three times, solid Gold Medals will be presented).

**Extra Prize.**—Messrs. Hawkes & Son, of Denman Street, Piccadilly Circus, London, W., will present to the First Prize Band a Hawkes' New Model Euphonium, fitted with the compensating 4th Valve extension—the Soloist's instrument—triple silver-plated, very handsomely engraved and gilded, complete in the New Model Case. Value **£26 5s**.

**Extra Prize.**—Messrs. Mallett, Porter & Dowd, Ltd., of 465 Caledonian Road, London, N., will present to the First Prize Band a full set of New Caps (Latest Pattern Staff), with gilt or plated metal peaks as preferred. Value **£5 5s**.

Messrs. Mallett, Porter & Dowd, Ltd., will also present a similar prize to a First Prize Band in each of the other seven sections.

**Extra Prize.**—The Uniform Clothing and Equipment Co., of 5 Clerkenwell Green, London, E.C., will present to the Amateur Bandmaster of the First Prize Band a Bandmaster's black or white patent leather Cross Belt, with Pouch, Whistle, Chain and Badge complete. Value **£1 1s**.

The Uniform Clothing and Equipment Co. will also present a similar Prize to the First Prize Band in each of the other seven sections.

Total value of the First Prize—**£1,133**.

**Second Prize.**—The "Daily Telegraph" Challenge Cup (subject to the usual Regulations) value **50 Guineas**, presented by the Proprietors of the "Daily Telegraph" and a Cash Prize of **£30**.

**Extra Prize.**—Messrs. Besson & Co., Ltd., of 196-8 Euston Road, London, N.W., will present to the Second Prize Band any One of their famous "Enharmonic" Valve Instruments, as used by all the leading Contesting Bands. Value **£20**.

**Third Prize.**—A Cash Prize of **£20**.

**Extra Prize.**—Messrs. Joseph Higham, Ltd., of 127 Strangeways, Manchester, will present to the Third Prize Band One of their B flat Cornets, Coronation Contesting Model, Class "A," Silver-plated, in special leather case, complete, as used by the most successful Soloists and Contesting Bands. Value **£13 13s**.

**Fourth Prize.**—A Cash Prize of **£16**.

**Extra Prize.**—Messrs. Gisborne & Co., of Apollo Works, Vere Street, Birmingham, will present to the Fourth Prize Band a B flat Trombone, "Imperial Supreme" Class, silver-plated, handsomely engraved and gilded, in cowhide Improved Perfection Case, fitted with Gisborne's new end protector and plush lined. **£13 13s**.

**Fifth Prize.**—A Cash Prize of **£12**.

**Extra Prize.**—Messrs. Boosey & Co., of 295 Regent Street, London, W., will present to the Fifth Prize Band a silver-plated and engraved B flat Cornet, in leather case complete, Class "A" Contesting Model, fitted with "Solbron" valves. Value **£12 12s**.

**Sixth Prize.**—A Cash Prize of **£10**.

**Extra Prize.**—Messrs. Kessels & Co., of 57 Berners Street, London, W., will present to the Sixth Prize Band any Brass Instrument selected from their Catalogue. Value **£10 10s**.

**Seventh Prize.**—A Cash Prize of **£5**.

**Extra Prize.**—Messrs. Rudall, Carte & Co., Ltd., of 23 Berners Street, London, W., will present to the Seventh Prize Band One of their patent Conical Bore B flat Cornets, in wood case. Value **£10 4s**.

### GRAND SHIELD SECTION.

**First Prize.**—The "Daily Express" Challenge Shield (subject to the usual Regulations), value **50 Guineas**, presented by the Proprietors of the London "Daily Express," and a Cash Prize of **£20**.

**Band Festival—Continued.**

**Extra Prize.**—Mr. Alfred Hays of 26 Old Bond Street, London, W., will present to the First Prize Band a B flat "Buffet" Soloist Model, Tenor Slide Trombone, triple electro-plated and burnished, best quality. Value **£12 12s.**

**Second Prize.**—**£10.**    **Third Prize.**—**£5.**

**Fourth Prize.**—**£3.**    **Fifth Prize.**—**£2.**

**JUNIOR CUP SECTION.**

**First Prize.**—The "Daily Graphic" Challenge Cup (subject to the usual Regulations) value **50 Guineas**, presented by the Proprietors of the London "Daily Graphic," and a Cash Prize of **£5.**

**Extra Prize.**—Messrs. Montague Brothers of 121 Bedford Hill, Balham, London, S.W., will present to the First Prize Band a 1912 Special Contesting B flat Cornet, silver-plated, engraved and gilded, in best leather case. Value **£12 12s.**

**Second Prize.**—A Cash Prize of **£3.**

**Extra Prize.**—Messrs. B. Podmore & Co., of 14 Post Office Avenue, Southport, will present to the Second Prize Band a handsome Silver mounted Ivory Baton, in case complete. Value **£3.**

**Third Prize.**—**£2.**    **Fourth Prize.**—**£1.**

**PRELIMINARY SHIELD SECTION.**

**First Prize.**—The "People" Challenge Shield (subject to the usual Regulations), value **50 Guineas**, presented by the Proprietors of the "People" Weekly Newspaper, and a Cash Prize of **£5.**

**Extra Prize.**—Messrs. Jerome Thibouville-Lamy & Co., of 10 Charterhouse Street, London, E.C., will present to the First Prize Band a "Special Class" Slide Tenor Trombone, with a finely engraved bell and fancy ornamentations to all joints, and best silver-plated, in a best enamelled hide black leather case. Value **£12.**

**Second Prize.**—**£3.**    **Third Prize.**—**£2.**

**Fourth Prize.**—**£1.**

**PRELIMINARY CUP SECTION.**

**First Prize.**—The "Daily Mirror" Challenge Cup (subject to the usual Regulations), value **50 Guineas**, presented by the Proprietors of the London "Daily Mirror" and a Cash Prize of **£5.**

**Extra Prize.**—Messrs. Chappell & Co., Ltd., of 50 New Bond Street, London, W., will present to the First Prize Band a Metronome in Walnut Case, with bell, best English make, with hinged door and fixed key. Value **£1 10s.**

**Second Prize.**—A Cash Prize of **£3.**

**Extra Prize.**—Messrs. B. Podmore & Co. will also present a handsome Silver mounted Ebony Baton, in case complete. Value **£1 10s.**

**Third Prize.**—**£2.**    **Fourth Prize.**—**£1.**

**REED BAND SECTION.**

**First Prize.**—The "Pearson's Weekly" Challenge Shield (subject to the usual Regulations), value **50 Guineas**, presented by the Proprietors of "Pearson's Weekly" and a Cash Prize of **£10.**

**Extra Prize.**—Mr. H. Laubach, of 2 Jeffrey Place, Jeffrey Street, Camden Town, London, N.W., will present to the First Prize Band a B flat and A Trumpet for Brass, Military and Orchestral Bands, silver-plated, frosted outside with burnished mounts, and burnished inside bell, engraved, with solid leather case, velvet lined. Value **£11 11s.**

**Second Prize.**—**£5.**    **Third Prize.**—**£3.**  
**Fourth Prize.**—**£2.**

**BOYS' BAND SECTION.**

**First Prize.**—The "Woods" Challenge Cup (subject to the usual Regulations), value **10 Guineas**, presented by Mr. W. S. Woods, of Barkers Pool, Fargate, Sheffield, and a Prize of the value of **£5.**

**Extra Prize.**—Messrs. Chappell & Co., Ltd., will also present a Metronome in Walnut Case, best English make, with hinged door and fixed key. Value **£1 1s.**

**Second Prize** of the value of **£2.**

**Third Prize** of the value of **£1.**

**CONSOLATION CUP SECTION.**

**First Prize.**—The "Champion Journal" Challenge Cup (subject to the usual Regulations), value **10 Guineas**, presented by R. Smith & Co., Ltd., of 210 Strand, London, W.C., and a Cash Prize of **£5.**

**Second Prize.**—**£3.**    **Third Prize.**—**£2.**

**Fourth Prize.**—**£1.**

**NOTE.**—Mr. J. HENRY ILES will present Certificates of Merit to all Prize-Winning Bands.

10.30—NORTH TOWER GARDENS.

# Brass Band Contest for the "Daily Express" Challenge Shield and other Prizes.

(See Page 4).

Adjudicators:—Messrs. C. WARD and J. H. CARTER.

## GRAND SHIELD SECTION.

Test-piece—Selection ... "EMILIA" ... .. Donizetti

Band.	Conductor.	Draw.	Result.
1. Birstall, Old ... ..	H. Needham ... ..	6.	...
2. Birtley St. Josephs ... ..	I. Almond ... ..	18.	...
3. Boots Plaisance, Nottingham	E. J. Ellis ... ..	9.	...
4. Bourneville Works ... ..	J. Loughton ... ..	13.	...
5. Clown Silver ... ..	M. H. Walker ... ..	15.	...
6. Congleton Town ... ..	C. Anderson ... ..	10.	...
7. Dartford Silver ... ..	H. E. Gilder ... ..	20.	...
8. Guisborough Priory ... ..	A. Holden ... ..	4.	...
<del>9. Hampstead ... ..</del>	<del>S. Gope ... ..</del>		
3. 10. Hemsworth Colliery ... ..	A. Holden ... ..	12.	...
7. 11. Hetton ... ..	W. Straughan ... ..	19.	...
<del>12. Lewisham Borough ... ..</del>	<del>T. Morgan ... ..</del>		
13. Maesteg Hibernian ... ..	J. A. Greenwood ... ..	7.	...
14. Middlesborough Boro' ... ..	J. Wilson ... ..	17.	...
15. Middlesborough Erimus ... ..	J. Wilson ... ..	16.	...
16. Milburns Model ... ..	H. Milburn ... ..	14.	...
17. North London Excelsior ... ..	J. Pursglove ... ..	5.	...
4. 18. Raunds Temperance ... ..	W. Halliwell ... ..	1.	...
5. 19. Rushden Rifles ... ..	E. C. Whitworth ... ..	21.	...
20. Shoreditch Borough ... ..	R. E. Aldous ... ..	22.	...
21. Southwark Borough ... ..	T. Morgan ... ..	3.	...
22. Swanwick Colliery ... ..	A. Holden ... ..	11.	...
23. Thrapston Town ... ..	C. H. Baker ... ..	2.	...
24. Upper Norwood ... ..	T. Morgan ... ..	8.	...



10.30.—CENTRAL AVENUE BANDSTAND.

# Brass Band Contest for the "Daily Graphic" Challenge Cup and other Prizes.

(See Page 5).

Adjudicator:—Mr. S. HOWCROFT.

## JUNIOR CUP SECTION.

Test-piece—Selection	...	"EMILIA"	...	...	...	...	Donizetti
<i>Band.</i>		<i>Conductor.</i>		<i>Draw.</i>			<i>Result.</i>
1. Barnet Town ... ..		T. A. Cheek ... ..					
2. Bedford Town ... ..		F. Mortimer ... ..					
3. Bescot (L. & N. W.) ... ..		I. Perrin ... ..					
4. Bolton Victoria Hall ... ..		H. Bennett ... ..					
5. Bridlington Excelsior... ..		W. Heap ... ..					
6. Burton Silver ... ..		A. Lawton ... ..					
7. Bwining and Blackwell ... ..		S. Taylor ... ..					
8. Chesham Town ... ..		R. Moore ... ..					
9. Chichester City ... ..		W. Reynolds ... ..					
10. Cockerton ... ..		W. Watson ... ..					
11. Cwmfelyn Workmen ... ..		P. Jenkins ... ..					
12. Cwmaman ... ..		R. S. Howells ... ..					
13. Cwm Liberal ... ..		J. H. Roberts ... ..					
14. Dinnington Colliery ... ..		W. Lerigo ... ..					
15. Enfield Town ... ..		F. Dimmock ... ..					
16. Harton Colliery ... ..		J. Oliver ... ..					
17. Llansaint Temperance ... ..		T. Valentine ... ..					
18. New Tredegar and Tirphil ... ..		W. Layman ... ..					
19. Reigate Town ... ..		G. H. Byford ... ..					
20. Rockingham Colliery... ..		J. Boothroyd ... ..					
21. Water ... ..		P. Fairhurst ... ..					
22. West Crawley Temperance ... ..		A. Williams ... ..					
23. Woodlands Village ... ..		S. Taylor ... ..					
24. Willington Silver ... ..		J. B. Wright ... ..					
25. Uxbridge Artizans ... ..		D. Roberts ... ..					
26. Stockport (late Yeomanry) ... ..		J. Beard ... ..					



10.30.—UNDER THE GREAT CLOCK.

## Brass Band Contest for "The People" Challenge Shield and other Prizes.

(See Page 5).

Adjudicator:—Mr. R. RIMMER.

### PRELIMINARY SHIELD SECTION.

Test-piece—Selection	...	"THE BOHEMIAN GIRL"	...	...	...	Balfé
<i>Band.</i>		<i>Conductor.</i>		<i>Draw.</i>		<i>Result.</i>
1. Bentley Colliery	...	J. Brier	...	...	...	...
2. Birdwell Subscription	...	J. A. Martin	...	...	...	...
3. Birkenhead Boro.	...	J. G. Dobbing	...	...	...	...
4. Brampton & Holymoore	...	G. S. Whitelam	...	...	...	...
5. Caterham United	...	C. Hunt	...	...	...	...
6. Chester le Street	...	J. Hughes	...	...	...	...
7. Chopwell Colliery	...	J. T. Ellis	...	...	...	...
8. Copthorne	...	W. J. Coverley	...	...	...	...
9. Fleet	...	J. Ritchie	...	...	...	...
10. G. C. & Metropolitan	...	J. H. Lay	...	...	...	...
11. Hanwell Town	...	C. McManus	...	...	...	...
12. Hardwick Colliery	...	S. Taylor	...	...	...	...
13. Horley Town	...	W. J. Coverley	...	...	...	...
14. Hugglescote & Ellistown	...	J. H. Burton	...	...	...	...
15. Kingswood Evangel	...	T. Morgan	...	...	...	...
16. Leighton Buzzard	...	C. Everitt	...	...	...	...
17. Mond Nickel Works	...	W. Griffiths	...	...	...	...
18. Newbury Temperance	...	J. S. Liddle	...	...	...	...
19. Newhall St. Johns	...	E. Booth	...	...	...	...
20. Rowntree's Cocoa Works	...	W. Halstead	...	...	...	...
21. St. Johns, Clydach	...	R. Davies	...	...	...	...
22. Southampton Town	...	A. E. Jones	...	...	...	...
23. South of England Temperance	...	A. H. Muddiman	...	...	...	...
24. Sutton Red Cross	...	W. Gill	...	...	...	...
25. Watford Artizans	...	W. Shuffill	...	...	...	...
26. Willesden Junction	...	C. McManus	...	...	...	...
27. Wilmslow Silver	...	C. Anderson	...	...	...	...
28. Wood Gate	...	T. Henshaw	...	...	...	...

10.30.—NEAR THE CANADIAN BUILDING TOWER.

# Brass Band Contest for the "Daily Mirror" Challenge Cup and other Prizes.

(See Page 5).

Adjudicator:—Mr. GEORGE TOWLE.

## PRELIMINARY CUP SECTION.

Test-piece—Overture	Band.	Conductor.	Draw.	Result.
... "THE VILLAGE BRIDE" ...				<i>W. Rimmer</i>
1. Barnoldswick	...	P. Fairhurst	...	...
2. Bilston Wesley	...	J. Roberts	...	...
3. Boscombe Temperance	...	C. Tiller	...	...
4. Brantham Xylonite Works	...	J. Naylor	...	...
5. Callender's Cable Works	...	W. English	...	...
6. Cambridge Town	...	F. Dimmock	...	...
7. Castleford Old	...	C. Haley	...	...
8. Chesterfield Town	...	L. Sheppard	...	...
9. Clayton West	...	L. Brown	...	...
10. Clevedon Silver	...	J. E. Wilkinson	...	...
11. Doncaster Subscription	...	J. W. Ellis	...	...
12. Gorse Hill	...	C. Baker	...	...
13. Greenwich Town	...	J. R. Cavender	...	...
14. Huddersfield Fire Brigade	...	J. Metcalfe	...	...
15. Kettering Victoria Mission	...	W. East	...	...
16. Kippax Old	...	A. Denton	...	...
17. Letchworth	...	P. Mortimer	...	...
18. Middleton-in-Teesdale	...	T. Winter	...	...
19. Rotherham & Masborough	...	E. N. Draycott	...	...
20. Royston Subscription	...	G. Buckle	...	...
21. Rugby Town	...	W. Nuttall	...	...
22. Ryhill	...	G. Smith	...	...
23. Sheffield Tramways	...	R. Lundy	...	...
24. Southport (L. & Y.)	...	A. Aspinall	...	...
25. Stockbridge Old	...	P. Sanderson	...	...
26. Swansea Temperance	...	R. J. Marks	...	...
27. Thorncliffe & Chapelton	...	H. Fieldsend	...	...
28. Tytherington Church	...	J. E. Wilkinson	...	...



10.30.—ON THE CRICKET GROUND.

## Brass Band Contest for the "Champion Journal" Challenge Cup and other Prizes.

(See Page 5).

Adjudicator:—Mr. JESSE MANLEY.

### CONSOLATION CUP SECTION.

Test-piece—Fantasia	...	"SOUVENIR DE RUSSE"	...	...	W. Rimmer
Band.		Conductor.	Draw.		Result.
1. Amberley	...	J. G. Dobbing	...	...	...
2. Ashby and District	...	H. Cassell	...	...	...
3. Backworth Institute	...	S. F. Howells	...	...	...
4. Barry Dockers	...	A. J. Hopgood	...	...	...
5. Barry Red Cross	...	J. Bartram	...	...	...
6. Christ Church Leyton	...	W. Nelson	...	...	...
7. Croydon Temperance	...	W. Mann	...	...	...
8. Essington	...	W. Guest	...	...	...
9. Filey	...	G. Lord	...	...	...
10. Frodingham and Scunthorpe	...	J. Bee	...	...	...
11. Hitchin	...	T. Cannon	...	...	...
12. Ilford Silver	...	E. Allder	...	...	...
13. Inkpen Temperance	...	A. J. Edwards	...	...	...
14. Kibworth Temperance	...	A. Lawton	...	...	...
15. Kings Heath Adult School	...	E. F. Stokes	...	...	...
16. King's Lynn Town	...	W. H. Jeffries	...	...	...
17. Knottingley	...	J. W. Stamp	...	...	...
18. Oulton	...	T. Dennison	...	...	...
19. Percy Main (N.E.R.)	...	W. Heap	...	...	...
20. Risca Military	...	W. Palmer	...	...	...
21. Royston, Herts	...	F. Dimmock	...	...	...
22. St. Albans and District	...	R. W. Mann	...	...	...
23. Sissons, Bros. & Co., Hull	...	C. E. Norman	...	...	...
24. Tiverton Town	...	W. B. Loosemore	...	...	...
25. West Hull Excelsior	...	J. J. Foster	...	...	...
26. Wiggenhall United	...	C. J. Smith	...	...	...
27. Wigstons Temperance	...	C. Moore	...	...	...
28. Ye Aston Olde	...	W. F. Rowe	...	...	...

11.—IN THE CONCERT ROOM.

# GRAND CHAMPIONSHIP BRASS BAND CONTEST

## for the

# ONE THOUSAND GUINEA CHALLENGE TROPHY

## “The Daily Telegraph” Challenge Cup and other Prizes.

(See Page 4).

Adjudicators:—Lieut. CHARLES GODFREY, M.V.O., Lieut. J. ORD HUME, L.F.  
Mr. G. H. MERCER.

### CHAMPIONSHIP SECTION.

Test-piece—Selection from “WILLIAM TELL” ... .. *Rossini*

Expressly arranged for this Contest by W. Rimmer.

<i>Band.</i>	<i>Conductor.</i>	<i>Draw.</i>	<i>Result.</i>
1. Aber Valley ... ..	S. Radcliffe ... ..	...	...
2. Batley Old ... ..	J. Brier ... ..	...	...
3. Birmingham City ... ..	I. Perrin ... ..	...	...
4. Black Dike Mills ... ..	J. A. Greenwood ... ..	...	...
5. Clydebank Burgh ... ..	W. Halliwell ... ..	...	...
6. Crosfields Soap Works ... ..	W. Halliwell ... ..	...	...
7. Foden's Motor Works ... ..	W. Halliwell ... ..	...	...
8. Gwaun cae Gurwen ... ..	F. J. Rees ... ..	...	...
9. Haworth Public ... ..	J. Paley ... ..	...	...
10. Hebden Bridge ... ..	W. Halliwell ... ..	...	...
11. Irwell Springs ... ..	W. Halliwell ... ..	...	...
12. Kettering Rifles ... ..	T. R. Preston ... ..	...	...
13. Kettering Town ... ..	A. Owen ... ..	...	...
14. King's Cross ... ..	J. A. Greenwood ... ..	...	...
15. Kirby-in-Ashfield ... ..	J. A. Greenwood ... ..	...	...
16. Lincoln Malleable ... ..	A. Holden ... ..	...	...
17. Luton Red Cross ... ..	W. Halliwell ... ..	...	...
18. Mansfield Colliery ... ..	A. Holden ... ..	...	...
19. Rushden Temperance ... ..	C. H. Baker ... ..	...	...
20. St. Hilda Colliery ... ..	W. Halliwell ... ..	...	...
21. Shaw ... ..	W. Halliwell ... ..	...	...
22. Skinningrove ... ..	G. Hawkins ... ..	...	...
23. South Moor Colliery ... ..	A. Holden ... ..	...	...
24. Wingates Temperance ... ..	J. A. Greenwood ... ..	...	...
25. 3rd Battalion Mon. Regiment	H. Bentley ... ..	...	...



## 11.—IN THE THEATRE.

## Reed Band Contest for the "Pearson's Weekly" Challenge Shield and other Prizes.

(See Page 5).

Adjudicator:—Mr. J. WESTON NICHOLL.

### REED BAND SECTION.

Test-piece—Fantasia	Band.	Conductor.	Draw.	W. Rimmer
				Result.
1. Ashford Railway Works	...	H. Gladman	...	...
2. Camberwell Borough...	...	C. Taylor	...	...
3. Cardiff Military	...	J. Matthews	...	...
4. Croydon Tramways	...	W. Ellis	...	...
5. East Grinstead	...	T. A. Adams	...	...
6. Gas Light & Coke Company	...	A. J. Williams	...	...
7. Graysilver	...	J. H. Parnum	...	...
8. Ireland's Own	...	A. Fawcett	...	...
9. Long Grove	...	C. Hammond	...	...
10. Mogg's Military	...	H. Mogg	...	...
11. Reading Temperance	...	W. Farr	...	...
12. Redhill Town	...	F. Rowe	...	...
13. Royal Naval Reserve	...	J. Reay	...	...
14. St. Joseph's Newry	...	T. Ruddy	...	...
15. Southampton P. O.	...	A. Howie	...	...
16. Stoke-on-Trent	...	F. C. Turner	...	...
17. Stourport Town	...	B. Evers	...	...
18. Stratford Co-Operative	...	A. J. Williams	...	...
19. Street Military	...	Gonzague Rivière	...	...
20. Woolwich Military	...	F. A. Tyler	...	...
21. 1st Welsh (Howitzer) R.F.A.	...	S. Hanney	...	...
22. 2nd H. C. Bde. R.F.A.	...	W. Burrell	...	...
23. 5th Battalion Royal Sussex	...	T. H. Rice	...	...
24. 6th Battalion Welsh Regiment	...	W. J. Sims	...	...

## 1.30.—IN THE SCHOOL OF ART.

## Boys' Band Contest for the "Woods" Challenge Cup and other Prizes.

(See Page 5).

Adjudicator:—Mr. FRANK SHAW.

### BOYS' BAND SECTION.

Test-pieces	(a) March	"CHEERFUL CHUMS"	...	...	W. Rimmer
	Band.	Conductor.	Draw.		Result.
1. Popular Training School	...	S. T. Webber	...	...	...
2. St. Nicholas School	...	P. McDonald	...	...	...
3. St. Pancras School	...	A. R. Byles	...	...	...
4. St. Vincent's School	...	F. McDonald	...	...	...
5. Shaftesbury School	...	W. Prosser	...	...	...
6. Shirley School	...	J. Machell	...	...	...
7. Sidcup Homes	...	R. Bonner	...	...	...

7.—HANDEL ORCHESTRA.

# Grand Festival Concert

BY THE

## MASSED BANDS.

(Under the direction of Mr. J. HENRY ILES, Officier d'Academie Francaise.)

### THE MASSED BANDS:

BLACK DIKE MILLS, Yorkshire,  
 CLYDEBANK BURGH, Scotland,  
 FODEN'S MOTOR WORKS, Cheshire,  
 IRWELL SPRINGS, Lancashire,  
 LUTON RED CROSS, Bedfordshire,  
 ST. HILDA COLLIERY, Durham,  
 SHAW, Lancashire,  
 WINGATES TEMPERANCE, Lancashire.

---

<i>At the Grand Organ</i>	-	-	<i>Mr. DAVID CLEGG.</i>
<i>Conductor</i>	-	-	<i>Mr. J. HENRY ILES.</i>

---

NOTE.—The tickets for the Reserved Seats will be on sale at the Ticket Office, near the Main Entrance, and at the Ticket Box outside the Concert Room, ALL DAY, and tickets for the Unreserved Seats will be on sale at the different pay-boxes at 5 o'clock. To save disappointment, Reserved Seat Tickets should be bought as early as possible, as many, last year, left it until it was too late.

## 7. GRAND ORGAN RECITAL

By Mr. DAVID CLEGG.

Mr. David Clegg, the World-famed Organist and Composer, has given over 4,000 Recitals on the Organ in the principal Cities of the British Isles, the Continent and America.

1. Poem Dramatique for Modern Concert Organ,  
 "THE GOD THOR" *David Clegg*
2. Gravement aus Orgel Fantasien (G Dur) ... .. *Sebastian Bach*  
One of the most dignified of the Composer's works, well suited to the "foundation stops" of a large Organ.
3. Organ Rhapsody and Doppel Fugue ... .. *David Clegg*



## 7.30. PROGRAMME OF CONCERT.

1. Ceremonial Ode ... "OUR KING" ... *Bruce Steane*

### THE MASSED BANDS.

This Ode was written for the home-coming of our Sovereign, King George, from India, February 5th, 1912. It concludes with the National Anthem, "God save the King."

2. March.... "QUEEN OF THE WEST" .... *W. Rimmer*

### THE MASSED BANDS.

A fine March, full of novelty of design and originality in construction, written by Mr. Rimmer, the "King of English March Writers."

3. Selection from ... "LES HUGUENOTS" .... *Meyerbeer*

### FODEN'S MOTOR WAGON WORKS BAND.

This splendid Selection was the test-piece for the Thousand Guinea Trophy Contest last year, and contains choice excerpts from this popular Opera. It is played by the Band who were the successful Band to win the Trophy in 1910, and were the runners-up for the Trophy at last year's gathering. This Band will be the Solo Band throughout the Concert.

4. Hymn Tunes (a) "ABERYSTWITH" .... *Dr. J. Parry*  
(b) "NEARER MY GOD TO THEE" *Rev. J. B. Dykes*

### THE MASSED BANDS.

The regular attendants at these Festivals always look forward to the rendition of the hymn tunes, because of the great effect produced at such a gathering of the leading Brass Bands of the country. "Aberystwith" is one of the most popular of the many sung and played in the Principality. "Nearer my God to Thee" is introduced as a mark of respect to the memory of the brave Handsmen who lost their lives in the "Titanic."

5. Quartette .... "THE NORTH WIND" .... *W. Rimmer*

### THE TROMBONE QUARTETTE.

(Messrs. J. W. Hacking, E. Woodhead, E. Evans and G. Hinkinson).  
Conductor—Mr. W. Halliwell.

A new departure at this Concert will be the appearance, for the first time, of a Quartette of leading Trombone Soloists, whose performance of a piece written expressly by Mr. Rimmer, will be listened to with the greatest possible interest as it introduces a new feature for the Concert platform.

6. Selection from .... "THE FLYING DUTCHMAN" .... *Wagner*

### THE SHAW BAND.

This Selection is another of the popular 1,000 Guinea Trophy test-pieces and will be played by the Shaw Band, the winners of the Trophy in 1909.

7. Duet .... "ALPINE WARBLERS" .... *W. Rimmer*

### THE MASSED BANDS.

This piece is a decided novelty for the Festival, and the characteristic Swiss Melody in the Introduction makes the title quite appropriate. The duet will be played by the Cornet players of Foden's Band.

8. (a) Quartette .... "CAST THY BURDEN" } from "Elijah"  
(b) Chorus .... "THANKS BE TO GOD" } *Mendelssohn*

### THE MASSED BANDS.

No apology is needed for introducing these charming numbers from Mendelssohn's great work. Foden's Band will render the Quartette followed by the Massed Bands in the Chorus.



Miss Marie Ladelle is the daughter of Mr. Valentine Smith the well-known Tenor, whose Opera Company for many years toured the Provinces. Her voice has been trained by Mr. Albert Visetti, and Sir Henry Wood has also given her lessons. This will be Miss Ladelle's first appearance on the Concert Platform.

9. Song ... "The Last Rose of Summer"

MISS MARIE LADELLE.

'Tis the last rose of summer,  
Left blooming alone;  
All her lovely companions  
Are faded and gone.  
No Flow'r of her kindred,  
No rose-bud is nigh,  
To reflect back her blushes,  
Or give sigh for sigh.

I'll not leave thee, thou lone one,  
To pine on thy stem,  
Since the lovely are sleeping,  
Go, sleep thou with them;  
Thus kindly I scatter  
Thy leaves o'er the bed,  
Where thy mates of the garden  
Lie scentless and dead.

10. Descriptive Fantasia

"A MILITARY CHURCH PARADE"

J. Ord Hume

(By Special Request).

THE MASSED BANDS.

Although an excellent programme was greatly enjoyed last year much regret was expressed that the Concert did not conclude with a descriptive number and this Fantasia is rendered to-day by special request. The synopsis of the Fantasia is as follows: "Sabbath Morn" — Bells— Fall in for Divine Service—"Hark the bonny Christchurch Bells"— Inspection March—March to Church— Hymn "Soldiers of Christ arise"—At Divine Service—Soldier's Hymn—Bells—The Return Back to Barracks—Finale.

NOTE.—Immediately after the performance of the last piece, the PRIZE WINNERS in the various Competitions will be announced, and the names of the successful Bands will appear on the Screen.

The Crystal Palace Band.

Conductor—MR. HERBERT GODFREY.

8 till 10.15—NORTH NAVE.

1. MARCH, "My Little Jap" ... *B. Phelps*
  2. SELECTION from "The Quaker Girl" ... *Monckton*
  3. MORCEAU, "Cinderella" ... ... *Lorraine*
  4. VALSE, "Vision of Salome" ... ... *Joyce*
  5. SELECTION from "The Dairymaids" ... *Rubens*
- INTERVAL.
6. MARCH, "Tres Montarde" ... *Cecil Macklin*
  7. SELECTION from "The Fortune-Teller" ... *Victor Herbert*
  8. VALSE, "Tout en Rose" ... ... *Waldteufel*
  9. MUSCOVITE DANCE ... ... *Boggelti*
  10. SELECTION from "Cavalleria Rusticana" ... *Mascagni*
  11. TWO-STEP, "Pigtails and Chopsticks" ... *Ed. Hesse*

3.30—FOOTBALL GROUND.

FOOTBALL MATCH.

CRYSTAL PALACE

v.

WEST HAM.

(Southern League.)



# Crystal Palace Fixtures

DURING THE  
AUTUMN & WINTER OF 1912.

- September** 28th.—National Band Festival.  
 " 28th.—Football Match—Crystal Palace v. West Ham United (*Southern League*).  
 " 30th and during the week in Theatre, "A Member of Tattersalls."
- October** 2nd<sup>nd</sup> & 3rd.—National Chrysanthemum Society's Show.  
 " 7th and during the week in Theatre, "Benson's Shakesperian Co."  
 " 9th.—Football Match—Crystal Palace v. Woolwich Arsenal (*Kent Senior Shield*).  
 " 9th.—Norwood Post Office Concert.  
 " 12th.—Football Match—Crystal Palace v. Coventry City (*Southern League*).  
 " 14th and during the week in Theatre, "Milestones."  
 " 15th, 16th & 17th.—Kennel Club Dog Show.  
 " 21st and during the week in Theatre, "The Glad Eye."  
 " 26th.—Football Match—Crystal Palace v. Merthyr Town (*Southern League*).  
 " 28th and during the week in Theatre, The O'mara Opera Co.  
 " 29th.—Railway Guards' Concert.  
 " 29th, 30th & 31st.—National Chrysanthemum Society's Show.  
 " 30th.—Football Match—Crystal Palace v. Millwall (*Professional Charity Fund*).
- November** 2nd.—Dulwich Philharmonic Society's Concert.  
 " 2nd.—Football Match—Crystal Palace v. Stoke (*Southern League*).  
 " 4th and during the week in Theatre, "Our Miss Gibbs."  
 " 11th and during the week in Theatre, "Bunty Pulls the Strings."  
 " 12th, 13th & 14th.—Poultry Show.  
 " 16th.—Football Match—Crystal Palace v. Southampton (*Southern League*).  
 " 18th and during the week in Theatre, "The Arcadians."  
 " 23rd.—Crystal Palace Orchestral Society's Concert.  
 " 25th and during the week in Theatre, "Charley's Aunt."  
 " 30th.—Football Match—Crystal Palace v. Norwich City (*Southern League*).
- December** 2nd and during the week in Theatre, "The Mousme."  
 " 9th and during the week in Theatre, "Rip Van Winkle" Opera.  
 " 10th & 11th.—National Cat Club's Show.  
 " 14th.—Dulwich Philharmonic Society's Concert.  
 " 14th.—Football Match—Crystal Palace v. Northampton (*Southern League*).  
 " 26th.—Opening of Pantomime Season in Theatre, "Jack and the Beanstalk."  
 " 26th.—Football Match—Crystal Palace v. Millwall (*Southern League*).  
 " 28th.—Football Match—Crystal Palace v. Swindon (*Southern League*).

Additional Important Fixtures are in negotiation and will be announced shortly.



# Valentine's

## Waterproofs & Weatherproofs

### MADE TO MEASURE.



### Featherweight Macintoshes For Ladies and Gentlemen.

The acme of comfort where lightness is desired. They afford perfect protection, are delightful to wear, easy to slip on or off, and when not in use can be rolled up and carried in the little cases supplied.

Ladies' or Gent.'s, 10/6, 21/-, 35/-

Our stock sizes fit most figures.

ALL SEAMS SEWN AND CEMENTED.

### Valentine's Weatherproofs. No Rubber.

In all the latest Yarn-Proofed Cloths.

Ladies' ... .. From 18/9

Gent.'s ... .. From 21/-

Made to Measure.

Call, Telephone, or send P.C. for 64 pp. Catalogue, Patterns, and Self-Measurement Forms. State whether Ladies' or Gent.'s, and if Waterproof or Weatherproof Patterns, or both, are desired.



### VALENTINE, Waterproofer,

15, Queen St., Cheapside, London, E.C.

'Phone CITY 8360. Tel. Address—'VALPARA, LONDON.'

*Kindly mention this advertisement.*

Proclaimed  
by the best judges to be all that  
one could desire.

# Greer's

## O.V.H

### WHISKY.

WILLIAM GREER & Co., Ltd.,  
Glasgow.