

THE **23rd** ANNUAL
BAND CONTEST
being the 28th Anniversary of the
**GREAT NATIONAL
BAND FESTIVAL**



PROGRAMME AND SOUVENIR
OF THE
CRYSTAL PALACE

PRICE SIXPENCE

Official Publishers
The Photochrom C^o L^{td} London & Tunbridge Wells
Exclusive Copyright

CRYSTAL PALACE BAND CONTEST!!

REGAL RECORDS

26

The Championship Test Piece :

“ A MOORSIDE SUITE ”

will be issued

FIRST on REGAL Records

Order it To-day!

PREVIOUS PRIZE WINNERS ON REGAL RECORDS:

1927.—“ THE WHITE RIDER ”

1st Prize Winners—CARLISLE ST. STEPHEN'S BAND

1926.—“ AN EPIC SYMPHONY ”

1st Prize Winners—ST. HILDA COLLIERY BAND

1925.—Overture, “ JOAN OF ARC ”

1st Prize Winners—MARSDEN COLLIERY BAND

1924.—Rhapsody, “ ON THE CORNISH COAST ”

1st Prize Winners—ST. HILDA COLLIERY BAND

3rd Prize Winners—NEWCASTLE (N.S.W.) WORKS BAND

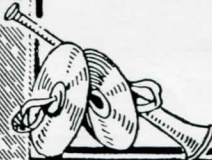
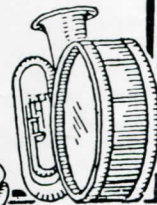
1923.—Overture, “ OLIVER CROMWELL ”

1st Prize Winners—LUTON RED CROSS BAND

2nd Prize Winners—BLACK DYKE MILLS BAND

3rd Prize Winners—FODEN MOTOR WORKS BAND

REGAL—always REGAL!





CRYSTAL PALACE

HENRY JAMES BUCKLAND - - - General Manager

THE
**28th Anniversary of
the Great National
BAND FESTIVAL**
(Being the Twenty-Third Band Contest)

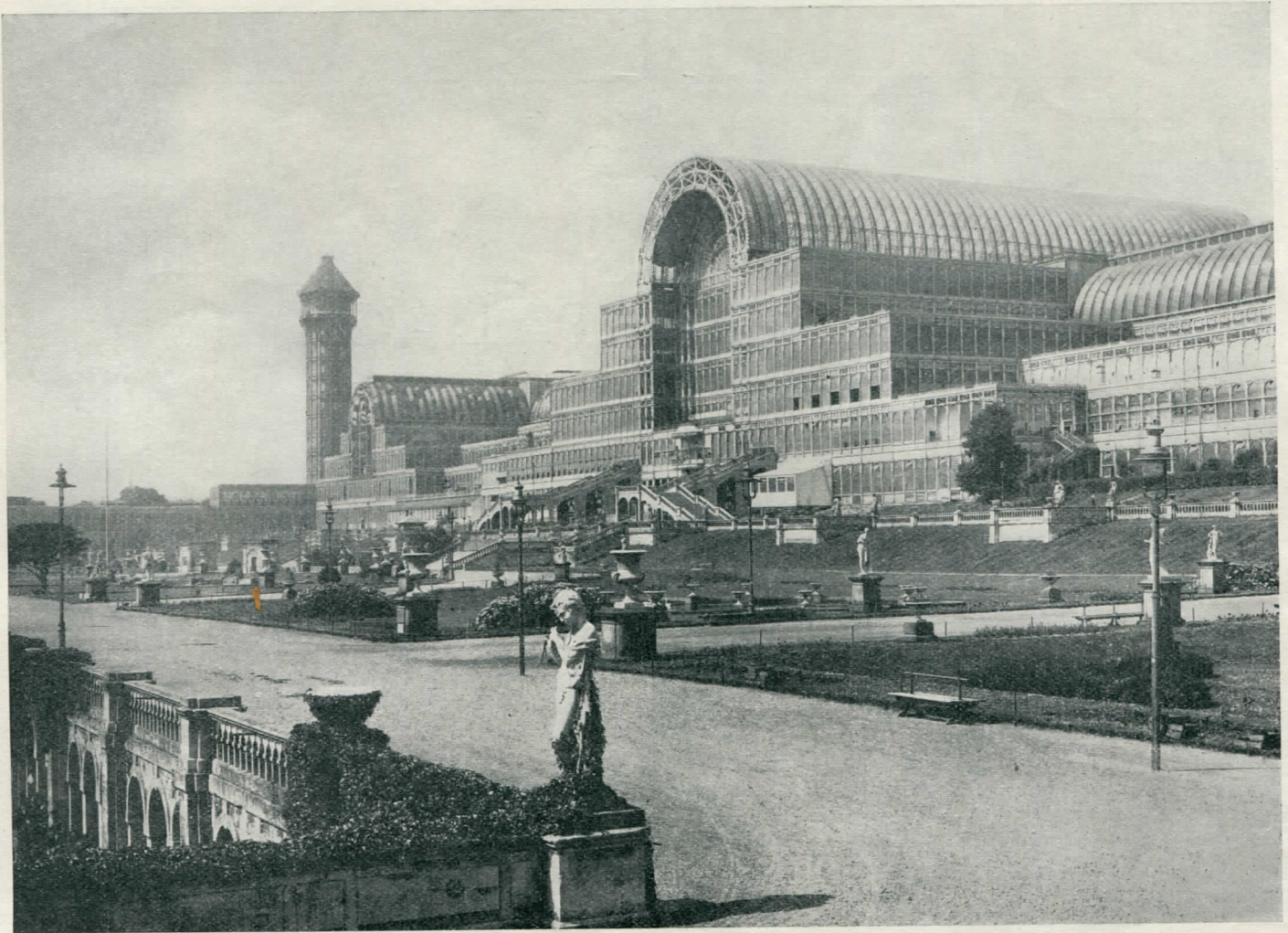
SEPTEMBER 29th
1 9 2 8

Under the Gracious Patronage of
HIS MAJESTY THE KING

Director and Founder - - -

Mr. J. HENRY ILES
(Officier d'Academie Francaise)

COPYRIGHT PUBLICATION
BY THE
PHOTOCHROM CO., LTD.
80 FLEET STREET, LONDON, E.C. 4



CRYSTAL PALACE. VIEW FROM TERRACE

SPECIAL DISPLAY

MONOPOLE SAXOPHONES, BRASS AND WOOD-WIND
ANETTE DRUMS AND ACCESSORIES INSTRUMENTS

The HUSH-HUSH MUTE

For Cornet, Trumpet and Trombone

(Patt. No. 288435)

SPECIAL PRICES TO-DAY

L. J. MOLD & Co.

(LES MOLD—LATE OF BOOSEY & BESSON)

19 CARLISLE STREET, LONDON, W.1

THE GREAT NATIONAL BAND FESTIVAL

*THE NATIONAL BAND FESTIVAL
was founded in 1900 by Mr. J. HENRY ILES*

THE CRYSTAL PALACE BAND FESTIVAL

NO one will deny that the Crystal Palace Annual Band Contests, which were initiated in 1900, as the National Brass Band Festival, by Mr. J. Henry Iles, the present director, have been the means of raising the standard of amateur band performances all over the United Kingdom.

It was in July, 1900, that Mr. Iles founded the Annual National Band Festival at the Crystal Palace for bands of the British Isles and the Colonies, comprising band contests and a concert by massed bands. He was instrumental in enlisting the keen personal support of the late Sir Arthur Sullivan, who first conducted the massed bands. To-day is held the 23rd Festival, all of which have from the commencement been under the personal direction of Mr. Iles.

From an entry of 40 bands in 1900, the National Band Festival has increased to an entry this year of no less than 150 brass bands.

Bands are graded in Six Sections:—

- (1) CHAMPIONSHIP.
- (2) GRAND SHIELD.
- (3) JUNIOR CUP (A and B).
- (4) JUNIOR SHIELD (A and B).

The names of the bands, their conductors, together with the names of the adjudicators and the music to be played, will be found on other pages in this programme.

Up to 1912 (for the Championship) the music set for the bands to play was an "arrangement" of some work not originally composed for a brass band. Since 1913, and at the 1920 and subsequent contests, the test piece has been specially composed for this contest. (There was no contest in the years 1914 to 1919.)

Previous to 1922 the bands played standing, with the conductor in the centre. That year (in the Championship section) what is now known as "concert formation" was introduced—each player seated and using a separate music stand, the conductor in front of the band instead of the centre. At the 1923 contest, concert formation was adopted in each of the six sections.

Since 1921 His Majesty The King has graciously given his patronage to this great Musical Festival, the largest of its kind in the world.

H. W.

CRYSTAL PALACE

THE Crystal Palace stands alone among the world's historic edifices—unique in its construction; universal in its fame; and diverse in its utilities. It owes its inception to the fertile brain of the late Sir Joseph Paxton, and it was originally erected in Hyde Park for the Great Exhibition of 1851. At the conclusion of this exhibition, enterprising people secured the necessary financial assistance and brought the building to its present site, adding the two towers and other parts of the structure to present the building which is so readily recognised to-day.

Its career is chequered with triumph and disaster, and private enterprise played a losing game within its walls, until the year 1913, when it passed into the hands of the Official Receiver. By public subscription it then became the property of the Nation, and from 1914, although unaided financially, its glories have gradually been re-built upon the ashes of the past.

To-day, a study of its records affords the finest possible illustration of the inevitable march of science through the progress of civilisation. A peep at the 1851 exhibition would be a revelation to the youth of to-day, not because of what would be seen, but because of what would be missed. The catalogues reveal no indication of many of those wonderful inventions which now form part of our daily life. There was no electric light; telephones were unheard of; motor cars did not exist; gramophones were unknown; bicycles had not been invented, and the camera was nothing more than a scientific toy. From this period onwards, catalogues of the many exhibitions reveal evidence of the gradual progress towards the perfections of to-day.

It will readily be realised that the Crystal Palace has necessarily passed through many vicissitudes; in its early days people took life slowly and seriously, and they would pay heavy charges to see exhibitions of articles that we should now regard as crude. They would also attend ceremonial functions, and, for want of greater excitement, would flock to entertainments which now would fail to interest. Probably the most important of its early features was the Annual Show of Flowers. This became a fashion parade, and the society of the day never failed to attend.

[Continued on page 18]

With their usual enterprise, the National Sunday League have arranged for the Band winning the Championship and Thousand Guinea Trophy to play on Sunday, September 30th, 1928, at the Finsbury Park Empire.

BESSON
"PROTOTYPE"
BAND INSTRUMENTS
THE WORLD'S STANDARD
OF QUALITY
TESTED
TRUSTED
TRIUMPHANT

196-8 EUSTON ROAD LONDON N.W.1

MADE
WITH
SKILL

SOLD
WITH
PRIDE

BOUGHT
WITH
CONFIDENCE

PLAYED
WITH
SATISFACTION

CRYSTAL PALACE 1,000 GUINEA TROPHY

A WONDERFUL RECORD

Twenty-two Contests have been held, and on
Nineteen Occasions the Trophy has been won by

A BESSON EQUIPPED BAND



A HOLLAND MORN

PUBLISHED BY REQUEST



CRYSTAL PALACE. FROM S.E.

The Oldest Original Firm **EVANS' UNIFORMS**

**COMPLETE SATISFACTION GUARANTEED
FIT-VALUE-WORKMANSHIP-UNBEATABLE**

*New premises opened on Clerkenwell Green to
cope with our Increased Trade. Come and see us!*

Contractors to:

Foden's Motor Works Band	Hanwell Silver Prize Band
Wingates Temperance Band	Crystal Palace Band
Horwich R.M.I. Band	St. Dennis Silver Prize
Irwell Springs Band	British Legion
Hebden Bridge Band	Headquarters Band
Crosfield's Perfection Soap	St. Dennis Silver Prize
Works Band	Bugle Silver Band
Dove Holes Band	Govan Burgh Band
Marsden Colliery Band	Gwaun Cae Gurwen Silver
Adamson Military Band	Prize Band
Glazebury Prize Band	Edenberry Brass and
	Reed Band
etc.	etc.
etc.	etc.

**Samples & Coloured Catalogue Carriage Paid
REPRESENTATIVE TO MEASURE, FREE OF CHARGE**

THE
UNIFORM CLOTHING & EQUIPMENT Co., Ltd.
10, 11 CLERKENWELL GREEN, LONDON, E.C. 1.

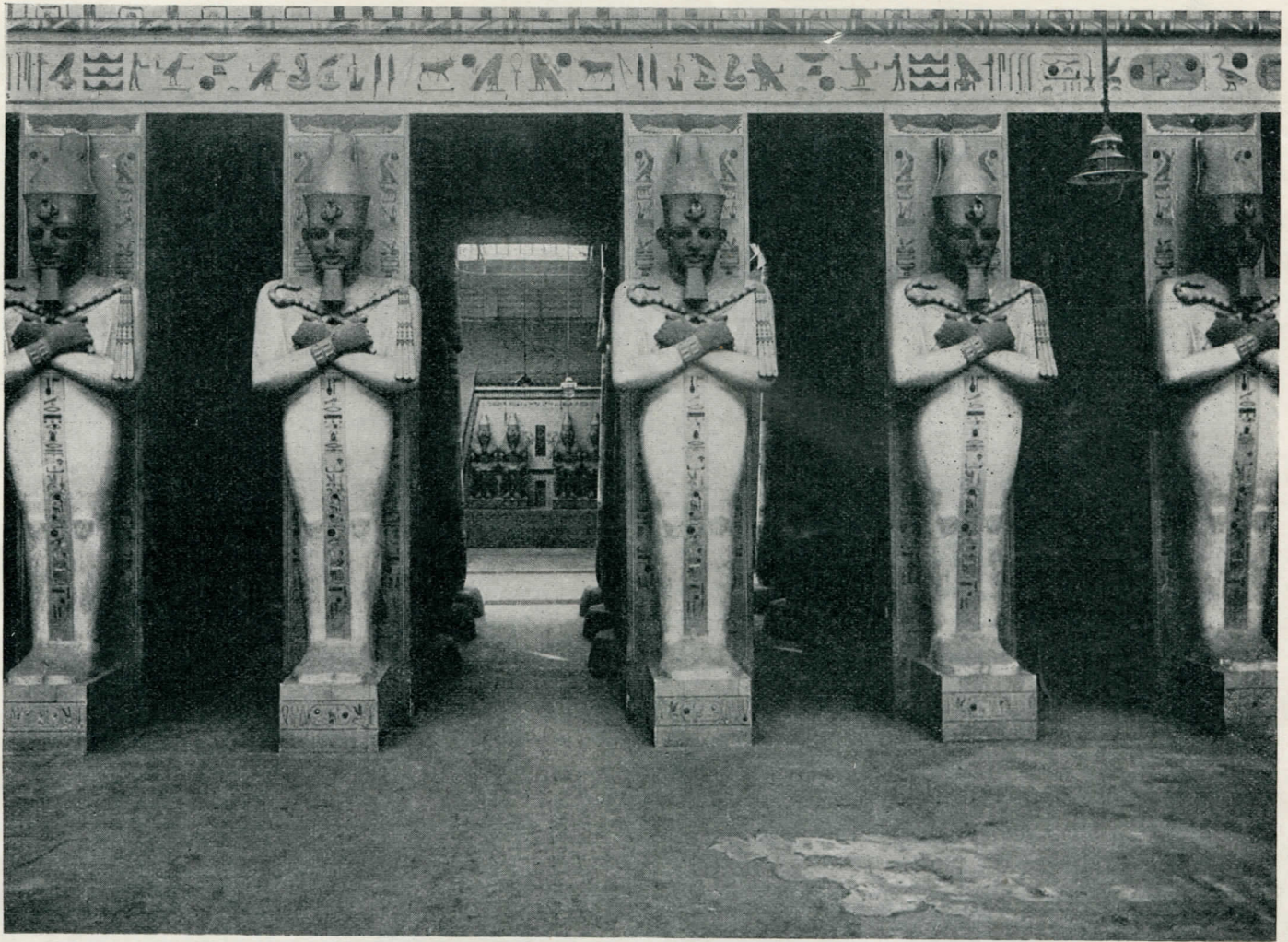
Telephones { CLERKENWELL 6682
5226
PENDLETON 144
GLASGOW CENTRAL 519

Telegrams :
"UNIQUP, LONDON."

Northern Representative :- Mr. J. CLARKSON,
47 Barrfield Road, Pendleton, Manchester.

LIST OF EXHIBITORS IN SOUTH NAVE

- BEEVER & Co., 26 Aldermanbury, E.C. 2.
 BESSON & Co., LTD., 196/198 Euston Road, N.W. 1.
 BOOSEY & Co., 295 Regent Street, W. 1.
 BOSWORTH & Co., LTD., 8 Heddon Street, W.
 W. BROWN & SONS, 323 Kennington Road, S.E. 11.
 CAMPBELL, CONNELLY & Co., 10 Denmark Street,
 Charing Cross Road, W.C. 2.
 B. FELDMAN & Co., 125/129 Shaftesbury Avenue,
 W.C. 2.
 HAWKES & SON, Denman Street, Piccadilly, W. 1.
 KEITH PROWSE & Co., LTD., 159 New Bond Street,
 W. 1.
 H. LAWBACK, 3 Jeffrey's Place, Camden Town, N.W. 1.
 LAWRENCE WRIGHT MUSIC Co., Denmark Street,
 W.C. 2.
 MOLD & Co., 19 Carlisle Street, Dean Street, W. 1.
 W. PARTRIDGE & Co., 175 Clapham Road, S.W. 9.
 PAXMAN BROS., 23 High Street, Borough, S.E. 1.
 A. M. PHILPOT, 354 Beech Hill, Luton, Beds.
 A. REYNOLDS, 138 Chester Road, Manchester.
 T. REYNOLDS, SENR. & SON, 43 Chapel Street,
 Salford, Manchester.
 UNIFORM CLOTHING & EQUIPMENT Co., LTD.,
 5 Clerkenwell Green, E.C. 1.
 P. TOMKINS, 20 Ethel Street, Northampton.



GIANT FIGURES OF RAMESES. THE EGYPTIAN COURT, CRYSTAL PALACE.

The Mecca Cafes

CATERERS BY APPOINTMENT TO THE CRYSTAL PALACE

Head Offices, Stores, etc.: **76 SOUTHWARK STREET, S.E. 1**

LONDON:—CAFES AND RESTAURANTS

54 Gresham Street
Telegraph Street.
101 Leadenhall Street.
145 Cannon Street.
Broad Street.
14 Walbrook.
19 London Wall.

50/51 Fore Street.
Great St. Helens.
75b Queen Victoria Street.
3 Gresham Street.
9/10 Mark Lane.
23 Coleman Street.
67b Shaftesbury Avenue.

1 Whittington Avenue.
69/70 Mark Lane.
139 Cannon Street.
King's Arms Yard.
140 Cheapside.
24 Lime Street.
21 St. Mary Axe.

15 Copthall Avenue.
68 Basinghall Street.
56 Ludgate Hill.
11a Queen Street.
11/12 Blomfield Street.
65/6 Chancery Lane.
143 Charing Cross Road.

PROVINCES

BIRMINGHAM

The Empire Cafe,
Smallbrook Street
The Station Street Cafe,
Station Street.
The Kings Cafe,
Midland Arcade, New Street.
The Mecca Cafe,
Waterloo Street.
The Cafe Royal,
Prudential Buildings.
Corporation Street.

HULL

The Mecca Cafe,
Prudential Buildings,
King Edward Street.

CAMBRIDGE

The Mecca Cafe,
Petty Cury.

SHEFFIELD

The Haymarket Hotel,
Haymarket.

LIVERPOOL

The Cotton Exchange Cafe
Ormond Street.

The Mecca Cafe,
6 Drury Lane.

The Exchange Cafe,
Exchange Flags.

BRIGHTON

The Mecca Cafe,
105 King's Road.

BRIDLINGTON

The Mecca Cafe,
8/9 Garrison Street.

MANCHESTER

The Mecca Cafe, 37 Cross Street.

ST. ALBANS

The Mecca Cafe, Market Place.

TUNBRIDGE WELLS

The Mecca Cafe,
44/46 The Pantiles.

HOTELS.

THE ROOF GARDEN HOTEL, John Bright Street, BIRMINGHAM.

THE EMPIRE HOTEL, Smallbrook Street, BIRMINGHAM

THE HAYMARKET HOTEL, King Street, SHEFFIELD

SOLE CATERERS AT SHERRY'S DANCE HALL, BRIGHTON, AND
ROYAL OPERA HOUSE DANCES, COVENT GARDEN

The Great Championship Contest

for the

CRYSTAL PALACE ONE THOUSAND GUINEA TROPHY

LIST OF WINNERS

1900 DENTON ORIGINAL (Lancashire)	1910 FODEN MOTOR WORKS (Cheshire)
1901 LEE MOUNT (Yorkshire)	1911 CROSFIELD'S SOAP WORKS (Lancashire)
1902 BLACK DYKE MILLS (Yorkshire)	1912-1920-1921-1924-1926 ST. HILDA COLLIERY (Durham)
1903 BESSES O' TH' BARN (Lancashire)	1922 HORWICH RAILWAY MECHANICS' INSTITUTE (Lancashire)
1904 HEBBURN COLLIERY (Durham)	1923 LUTON RED CROSS (Bedfordshire)
1905-8-13 IRWELL SPRINGS (Lancashire)	1925 MARSDEN COLLIERY (Durham)
1906-7 WINGATES TEMPERANCE (Lancashire)	1927 CARLISLE ST. STEPHEN'S (Cumberland)
1909 SHAW (Lancashire)	

1.0 p.m.—In the Concert Hall

Grand Championship Brass Band Contest for the Crystal Palace One Thousand Guinea Challenge Trophy and the "Daily Telegraph" Challenge Cup, and other Prizes

Adjudicators :—Professor GRANVILLE BANTOCK, Birmingham University.
Mr. HENRY GEEHL, London. Mr. CYRIL JENKINS, London.

PRIZES

FIRST PRIZE.—The Championship of Great Britain and the Colonies, the winners of which will be the holders for the year (under special regulations) of the CRYSTAL PALACE NATIONAL CHALLENGE TROPHY, of the value of One Thousand Guineas, and a CASH PRIZE OF FIFTY POUNDS, and Messrs. KEITH PROWSE & CO., LTD., 159 New Bond Street, London, W. 1, sole agents for the famous "Monopole" Band Instruments and "Super-Monopole" Saxophones, will present one of their Class "A" Artists' Model Bb Cornets, with special tuning devices, finished entirely in gold plate, and complete in solid leather case, valued at TWENTY-FIVE GUINEAS.

Each Member of the Band, including the Bandmaster and Secretary, will also be presented with the CRYSTAL PALACE CHAMPIONSHIP BRONZE MEDAL, with Bar and Clasp.

Members of the Band winning the Trophy for the second time will be presented with the same medal IN SOLID SILVER; and Members of the Band winning the Trophy for the third time will be presented with SOLID GOLD MEDALS.

SECOND PRIZE.—THE DAILY TELEGRAPH CHALLENGE CUP (subject to regulations), value Fifty Guineas, and a CASH PRIZE OF FORTY-FIVE POUNDS, and Messrs. HAWKES & SON, Denman Street, Piccadilly Circus, W. 1, will present one "Artists' Perfected" Trombone, triply silver-plated, gold burnished inside bell, with gold-plated, large size wreath and points, presentation finish, complete in H.S. moulded pattern case, valued at TWENTY-FIVE POUNDS.

THIRD PRIZE.—A CASH PRIZE OF FORTY POUNDS, and Messrs. W. BROWN & SONS, 323 Kennington Road, London, S.E. 11, will present one Engraved, Gold-plated Bb Cornet, in leather case, valued at TWENTY-FOUR POUNDS.

FOURTH PRIZE.—A CASH PRIZE OF THIRTY-FIVE POUNDS, and Messrs. BESSON & COMPANY, LTD., 196/8 Euston Road, London, N.W. 1, sole manufacturers of the celebrated "Prototype" Instruments, will present one of their famous "New Standard" Tenor Slide Trombones, handsomely silver-plated and embellished, complete in attaché case, valued at TWENTY-ONE GUINEAS.

FIFTH PRIZE.—A CASH PRIZE OF THIRTY POUNDS, and Messrs. BOOSEY & CO., LTD., 295 Regent Street, London, W. 1, will present one triply silver-plated and engraved Class "A" Contesting "Tenorone" Eb Tenor Horn, valued at SEVENTEEN POUNDS.

SIXTH PRIZE.—A CASH PRIZE OF TEN POUNDS, and THE UNIFORM CLOTHING & EQUIPMENT CO., LTD., 5 Clerkenwell Green, London, E.C. 1, will present One Set of Music Stands and One Set of Band Books, printed in gold or silver lettering, with the name of the Band and Instrumentation, valued at SEVENTEEN GUINEAS.

1. CHAMPIONSHIP CONTEST

TEST PIECE:

"A MOORSIDE SUITE"

Gustav Holst

Specially Composed for this Festival and published by R. SMITH & CO., LTD., 210 Strand, London, W.C. 2

No.	Band	Conductor	Draw	Result	No.	Band	Conductor	Draw	Result
1.	Black Dyke Mills ...	W. Halliwell ...	1	1	9.	Luton Red Cross ...	W. Halliwell ...	1	1
2.	Callender's Cable Works ...	T. Morgan ...	5	5	10.	Marsden Colliery ...	J. A. Greenwood ...	2	2
3.	Carlisle St. Stephen's ...	W. Lowes ...	3	3	11.	Metropolitan Works ...	G. H. Wilson ...	3	3
4.	Carlton Main Frickley Coll. N. Thorpe ...	N. Thorpe ...	2	2	12.	Rothwell Temperance ...	N. Sidebottom ...	4	4
5.	Creswell Colliery Institute ...	J. A. Greenwood ...	4	4	13.	South Moor Colliery ...	J. C. Dyson ...	5	5
6.	Foden Motor Works ...	W. Halliwell ...	4	4	14.	Sowerby Bridge Subscription ...	W. Halliwell ...	6	6
7.	Harton Colliery ...	W. Halliwell ...	2	2	15.	Wingates Temperance ...	W. Halliwell ...	7	7
8.	Horwich Railway Mechanic's Institute ...	W. Wood ...	6	6					

Admission to Concert Hall ... TWO SHILLINGS

NOTE.—The Director's Office is in front of the Concert Hall. At "THE BRITISH BANDSMAN" Stand, adjoining, can be obtained the Conductor's parts of the Test Pieces—Price One Shilling.

A MUSICAL EXHIBITION

By all the Leading Musical Instrument
Manufacturers, etc.

WILL BE HELD IN THE SOUTH NAVE

See List of Exhibitors, Page 6

ALL VISITORS
TO THE

GREAT CHAMPIONSHIP CONTEST

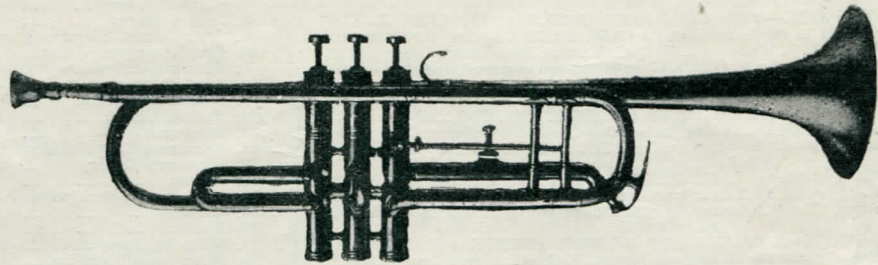
ARE CORDIALLY INVITED
TO VISIT OUR

DISPLAY OF BAND INSTRUMENTS

.....
EVERY Requirement for EVERY Bandsman or Professional Musician
.....

To-day's Special Bargain - COME AND TEST IT

ONLY
47/6



"B" FLAT TRUMPET IN HEAVY BRASS WITH
QUICK CHANGE SLIDE TO "A"

THE BEST CONTEST VALUE EVER OFFERED

LOOK OUT FOR THE K.P. KIDS

Ask them for Free Forms, and Enter our
Championship Forecast Competition

KEITH PROWSE & Co. Ltd.

159 NEW BOND STREET, LONDON, W.1

10.30 a.m.—In the Dance Hall

Brass Band Contest for the "Daily Express" Challenge Shield and "The People" Challenge Shield and other Prizes

Adjudicators:—Dr. THOMAS KEIGHLEY.
Mr. CHARLES WARD.

PRIZES

FIRST PRIZE.—The *DAILY EXPRESS* CHALLENGE SHIELD (subject to regulations), value Fifty Guineas, and a CASH PRIZE OF TWENTY POUNDS, and THE LAWRENCE WRIGHT MUSIC CO., Denmark Street, Charing Cross Road, London, W.C.2, will present one B flat "Clipper-tone" Cornet, complete with B flat and A natural shanks, tuning bit, cardholder, mouthpiece, triply silver-plated, and case, valued at FIFTEEN GUINEAS.

SECOND PRIZE.—THE *PEOPLE* CHALLENGE SHIELD (subject to regulations), and a CASH PRIZE OF FIFTEEN POUNDS, and Messrs. B. FELDMAN & Co., 125 Shaftesbury Avenue, London, W.C.2, will present one Triply Silver-plated Boosey famous new "Perfecta Truline" Tenor Trombone, with gilt wreath and bell, valued at FOURTEEN POUNDS.

THIRD PRIZE.—A CASH PRIZE OF TWELVE POUNDS, and Messrs. ALEC V. REYNOLDS, LTD., 138 Chester Road, Manchester, will present one Bb Cornet, silver-plated and engraved, in best black case, value TWELVE GUINEAS.

FOURTH PRIZE.—A CASH PRIZE OF TEN POUNDS, and Messrs. BEEVERS, 26 Aldermanbury, London, E.C.2, will present one Bandmaster's Frock-coat Suit and Cap, or a set of Band Caps, either to the value of TWELVE GUINEAS.

FIFTH PRIZE.—A CASH PRIZE OF EIGHT POUNDS, and Messrs. THOMAS REYNOLDS SENR. & SONS, 43 Chapel Street, Salford, Manchester, will present one Engraved and Silver-plated Soloist Reynolds' Trombone, valued at ELEVEN GUINEAS.

2. GRAND SHIELD CONTEST

Test Piece—OVERTURE ... "EGMONT" ...		Beethoven		
No.	Band	Conductor	Draw Result	
1.	Baxendale's Works	J. Jennings	6	
2.	Birstall Old	J. C. Dyson	22	
3.	Camborne Town	A. W. Parker	19	
4.	Cambridge Railway	J. C. Dyson	7	
5.	Colne Borough	W. Pollard	14	
6.	Crystal Palace	W. W. Grant	13	
7.	Eccles Borough	J. Dow	9	
8.	Edmonton	W. Tyrrell	20	3
9.	Enfield	F. Dimmock	1	
10.	Hanwell	W. Greenwood	11	
11.	Horden Colliery	J. C. Dyson	18	
12.	Middlesbrough Borough	J. Wilson	3	
13.	Milnrow Public	J. A. Greenwood	15	
14.	Pleasley Colliery	H. Lambeth	12	
15.	Raunds Temperance	J. A. Greenwood	5	2
16.	Rushden Temperance	J. Jennings	4	
17.	Rushden Town	J. E. Fidler	10	
18.	St. Dennis	C. H. Baker	21	1
19.	St. Pancras	F. Dimmock	16	
20.	Wigston Temperance	C. Moore	2	
21.	Wolverton Town and Works	F. Mortimer	21	
22.	Workington Town	W. J. Smith	17	

10.30 a.m.—North Tower Gardens

Brass Band Contest for the "Daily Sketch" Challenge Cup, the "Champion Journal" Challenge Cup and other Prizes

Adjudicators:—Mr. JAMES OLIVER.
Mr. BASIL WINDSOR.

PRIZES

FIRST PRIZE.—THE *DAILY SKETCH* CHALLENGE CUP (subject to regulations), value Fifty Guineas, and a CASH PRIZE OF FIFTEEN POUNDS, and Messrs. CAMPBELL, CONNELLY & Co., 10 Denmark Street, Charing Cross, W.C.2, will present one Bb Cornet (by Couesnon et Cie, Paris) Besson Model, silver-plated and engraved, complete in brown cowhide attaché-shaped case, velvet lined, valued at TEN GUINEAS.

SECOND PRIZE.—THE *CHAMPION JOURNAL* CHALLENGE CUP (subject to regulations), and a CASH PRIZE OF TEN POUNDS, and Messrs. L. J. MOLD & Co., 19 Carlisle Street, Dean Street, London, W.1, will present one Bb Cornet, silver-plated and engraved, complete in case, valued at TEN GUINEAS.

THIRD PRIZE.—A CASH PRIZE OF EIGHT POUNDS, and Mr. A. M. PHILPOT, 354 Beech Hill, Luton, Beds., will do repairs or silver-plating to band instruments to the value of SEVEN POUNDS TEN SHILLINGS.

FOURTH PRIZE.—A CASH PRIZE OF SEVEN POUNDS, and Messrs. F. TOMPKINS, 20 Ethel Street, Northampton, will present one Cornet in Brass, Class "A," complete with fittings, valued at SEVEN GUINEAS.

FIFTH PRIZE.—A CASH PRIZE OF FIVE POUNDS, and Messrs. W. PARTRIDGE & Co., Ridgeworth House, 175 Clapham Road, London, S.W.9, will present One Set of thick, open, tone peg, Eight Bells, Stand and Beater, valued at SIX GUINEAS.

3. JUNIOR CUP (A) CONTEST

Test Piece—FANTASIA ... "HANOVER" ...		Denis Wright		
No.	Band	Conductor	Draw Result	
1.	Blackburn British Legion	J. Jennings		
2.	Branepeth Colliery	J. B. Wright		
3.	Callender's Cable Works "A"	C. A. Walters		2
4.	Clayton	J. C. Dyson		
5.	Coventry	S. J. Bedford		
6.	Croydon Borough	E. W. Miles		
7.	Dartford Town	G. Wara		
8.	Dunlop Works	A. Stokes		
9.	Great Central & Metropolitan	W. Smith		
10.	John Thompson Works	G. H. Wilson		
11.	Kibworth	S. S. H. Illiffe		
12.	Lambeth Borough	T. Morgan		
13.	Lewisham Borough	W. J. Stevens		
14.	Matlock United	L. Sheppard		
15.	Rawmarsh	H. A. Ackroyd		3
16.	Rowntree's Cocoa Works	W. Halstead		
17.	Silksworth Colliery	T. Coulson		
18.	Skipton	W. Halliwell		
19.	Southowran Subscription	W. Swingle		
20.	Stenales	C. H. Baker		1
21.	Watford	R. Hutchinson		
22.	Willesden Town	C. McManus		
23.	Wood Green Excelsior	W. Dolling		
24.	Yeovil Town	J. B. Yorke		
25.	Ystalfera Town	E. J. Evans		

10.30 a.m.—On the Terrace Bandstand

Brass Band Contest for the "Daily Mirror" Challenge Cup, the "Pearson's Weekly" Challenge Shield and other Prizes

Adjudicators:—Mr. W. NUTTALL.
Mr. T. J. REES.

PRIZES

FIRST PRIZE.—THE *DAILY MIRROR* CHALLENGE CUP (subject to regulations), value Fifty Guineas, and a CASH PRIZE OF FIFTEEN POUNDS, and Messrs. PAXMAN BROS., 156 Shaftesbury Avenue, London, W.C.2, will present One Pair of 15 in. Turkish Cymbals, valued at FIVE GUINEAS.

SECOND PRIZE.—THE *PEARSON'S WEEKLY* CHALLENGE SHIELD (subject to regulations), value Fifty Guineas, and a CASH PRIZE OF TEN POUNDS, and Messrs. BOSWORTH & Co., LTD., 8 Heddon Street, Regent Street, London, W.1, will present One Set of Eb Tubular Bells, valued at FIVE GUINEAS.

THIRD PRIZE.—A CASH PRIZE OF EIGHT POUNDS, and Mr. J. P. HULL, of 36 Rathbone Place, Oxford Street, London, W., will present One Cornet in case, valued at FIVE GUINEAS.

FOURTH PRIZE.—A CASH PRIZE OF SEVEN POUNDS, and Mr. H. LAWBACK, 3 Jefferys Place, Camden Town, N.W., will present one Bb Cornet, English model, in brass, fittings: two shanks, double cup mouth-piece and cardholder complete, valued at THREE POUNDS TEN SHILLINGS.

FIFTH PRIZE.—A CASH PRIZE OF FIVE POUNDS.

4. JUNIOR CUP (B) CONTEST

Test Piece—FANTASIA ... "HANOVER" ...		Denis Wright		
No.	Band	Conductor	Draw Result	
1.	Blyth (L. & N.E. Rly.)	C. J. Ritchie		
2.	Brantham Xylonite Works	F. Ranger		
3.	Brixton and Clapham	P. Clarke		
4.	Burbridge	H. Bee		
5.	Burton Excelsior	E. Booth		
6.	Coxlodge Institute	J. Taylor		
7.	Cwm Town	T. Valentine		
8.	Dalton Town	R. Atkinson		
9.	Fulham Borough	J. A. Potts		
10.	Glynneath	A. Casey		
11.	Gorseinon Institute	T. W. Speak		
12.	Grays Temperance	W. Watts		
13.	King's Heath Old	J. E. Hewes		
14.	Leyton Borough	H. Rundle		
15.	Lister's Works	H. Fussell		
16.	Manvers Main Colliery	H. Lodge		3
17.	Morris Motors	S. V. Wood		
18.	North Middlesex	W. C. Belsham		
19.	Northfleet	F. Drain		
20.	Ripon City	H. W. Hill		
21.	Rugby Town	S. J. Bedford		
22.	Sheffield Tramways	C. W. R. Hall		
23.	Swindon (G.W.)	J. Lennon		1
24.	Troedyrhiw	J. Williams		
25.	Yiewsley and West Drayton	A. W. Allen		2
26.	10th Batt. Manchester Regt.	F. Miller		

LAWRENCE WRIGHT HERE AGAIN

AT STAND NO. 5.



IF YOU WANT THE MOST POPULAR TUNES THAT ARE BEING SUNG AND PLAYED EVERYWHERE—JOIN THE WRIGHT MILITARY AND BRASS CLUB.



CRYSTAL PALACE

ENGLAND'S FINEST SPEEDWAY
THRILLING

DIRT TRACK RACING

Organised by London Motor Sports

SATURDAYS at 3.30

Admission 1/6 Children 6d.
Stands 2/-

ENGAGEMENTS HAVE NOW
BEEN COMPLETED FOR THE

CRYSTAL PALACE GRAND CONTINENTAL CIRCUS

COMMENCING

BOXING DAY, December 26th

The Programme will include
THE MOST POPULAR
CONTINENTAL ARTISTES
Many of whom will be appearing
in England for the first time

10.30 a.m.—In the Canadian Building

Brass Band Contest for the "Cassell's" Challenge Shield and other Prizes

Adjudicators:—Mr. H. BENNETT,
Mr. G. H. MERCER.

PRIZES

FIRST PRIZE.—THE CASSELL'S CHALLENGE SHIELD (subject to regulations), value Fifty Guineas, and a CASH PRIZE OF FIFTEEN POUNDS.

SECOND PRIZE.—A CASH PRIZE OF TEN POUNDS.

THIRD PRIZE.—A CASH PRIZE OF EIGHT POUNDS.

FOURTH PRIZE.—A CASH PRIZE OF SEVEN POUNDS.

FIFTH PRIZE.—A CASH PRIZE OF FIVE POUNDS.

5. JUNIOR SHIELD (A) CONTEST

Test Piece—FANTASIA		"ACCRINGTON"		Donald Munro	
No.	Band	Conductor	Draw	Result	
1.	Berkhamsted Excelsior	J. Hager			
2.	Bridgwater Imperial	J. B. Yorke			
3.	Ceapthilly Town	G. A. Wilkins			
4.	Carlton Temperance	H. Kemp		2.	
5.	Caterham	F. Snow			
6.	Croft	C. Moore			
7.	Driffield Town	W. Ellison			
8.	Erith Town	J. Hart			
9.	Falmouth Town	T. Chainey		3.	
10.	Grangewood	E. Headford			
11.	Harrogate	N. Sidebottom			
12.	Horsham Borough	W. Smith			
13.	Knutsford and Cross	H. Mortimer			
14.	Lumley Colliery	R. C. Lander		1.	
15.	Newport Pagnell	A. Green			
16.	Northampton	C. A. Anderson			
17.	Reigate Town	F. Wheatley			
18.	Ryhope Colliery	J. C. Dyson			
19.	Sheringham	J. C. Dyson			
20.	Sidmouth	J. Ord Hume			
21.	Soham Comrades	C. A. Anderson			
22.	St. Austell Town	E. F. Woodhead			
23.	Stanton Ironworks	J. Turner			
24.	Thorne Colliery	P. Stapleton			
25.	Tilbury Town	G. T. Nicholls			
26.	Turner's	F. Beecroft			
27.	Wellingborough Railwaymen's	W. Groom			
28.	Whyteleafe Village	P. Clarke			

10.30 a.m.—In the School of Art

Brass Band Contest for the "Iles" Challenge Shield and other Prizes

Adjudicators:—Mr. A. LAWTON,
Mr. G. NICHOLLS.

PRIZES

FIRST PRIZE.—THE ILES CHALLENGE SHIELD (subject to regulations), value Fifty Guineas, and a CASH PRIZE OF FIFTEEN POUNDS.

SECOND PRIZE.—A CASH PRIZE OF TEN POUNDS.

THIRD PRIZE.—A CASH PRIZE OF EIGHT POUNDS.

FOURTH PRIZE.—A CASH PRIZE OF SEVEN POUNDS.

FIFTH PRIZE.—A CASH PRIZE OF FIVE POUNDS.

6. JUNIOR SHIELD (B) CONTEST

Test Piece—FANTASIA		"ACCRINGTON"		Donald Munro	
No.	Band	Conductor	Draw	Result	
1.	Alexandra L.M. & S.	R. Cooper			
2.	Altoft's West Riding Colliery	G. Walsh			
3.	Barking Garage (L.G.O.C.)	J. R. Cavender			
4.	Barnard Castle	A. W. Robinson			
5.	Barry Conservative	A. H. Thomas			
6.	Biggleswade Town	H. J. Keene			
7.	Bloomsbury Institute Mission	E. Henry			
8.	Bluejacket Volunteer (R.N.)	A. H. Muddiman			
9.	Buntingford Town	E. J. Smith			
10.	Canterbury	P. J. McHenry			
11.	Cardiff City Tramways	T. J. Powell			
12.	Carlisle Buffalo	P. Faughay			
13.	Cawston and District	J. Singleton			
14.	Earl Shilton	R. W. Illiffe			
15.	Etchington and Robertsbridge	J. Martin			
16.	Fakenham Town	J. Ord Hume			
17.	Glastonbury Town	J. B. Yorke			
18.	Highgate Silver	J. H. Kichenside			
19.	Hoo St. Werburgh	M. Simmons			
20.	Ilford	E. H. Alder			
21.	King's Heath Adult School	H. Price			
22.	Radstock	C. Young			
23.	Redhill Town	M. H. Summers			
24.	Stanford le Hope Town	E. A. Arthrell			
25.	Thornton Heath	C. G. Hilliard			
26.	Tadley	C. Baker			
27.	Turner's Hill and Worth	J. H. Chaptler			
28.	West Bromwich Excelsior	J. T. Hughes			

THE COMPOSER OF THE TEST PIECE FOR THE CHAMPIONSHIP

THIS year we introduce a new work by one of the most famous of British composers—GUSTAV HOLST.

Educated at Cheltenham, it was originally intended that he should become a pianist, but from his earliest days Holst turned his attention to composition. After youthful experience as organist, choir-master and orchestral conductor, he entered the Royal College of Music when nineteen years of age, and for composition studied with Stanford. During the past twenty years he has composed many fine orchestral and choral works, and has been equally successful as teacher, lecturer, conductor and composer.

His music is thoroughly English in style. Now in his first work for brass band, called "A Moorside Suite," he breaks fresh ground.

Since 1919 Holst has taught composition at the Royal College of Music, but it is as a composer that his fame is world-wide and his place in English musical history secure.

H. W.

BEEVER'S UNIFORMS

The firm with 64 years' reputation for Value, Fit and complete satisfaction.

We are Contractors to

ST. HILDA'S BAND, Winners of the World's Championship, 1912, 1920, 1921, 1924 and 1926

CARLISLE ST. STEPHEN'S BAND, World's Champions, 1927

MARSDEN COLLIERY, World's Champions, 1925

CRESWELL COLLIERY BAND

BESSES O' TH' BARN BAND

DOVE HOLES PUBLIC PRIZE BAND

NUTGROVE BAND

Coloured List of Designs and Samples sent Free on Application

Representative sent to Measure Free of Charge

CARLTON MAIN BAND

SOWERBY BRIDGE SUBSCRIPTION BAND

PENDLETON PUBLIC PRIZE BAND

YORKSHIRE MILITARY BAND

HARTON COLLIERY BAND

DANNEMORA STEEL WORKS BAND

BOLSOVER COLLIERY SILVER PRIZE BAND

BLACK DYKE MILLS JUNIOR BRASS BAND, etc., etc.

BEEVER'S

(JAMES BEEVER & CO.)

26 ALDERMANBURY, LONDON, E.C.2

Phone: CITY 3272. Telegrams: BEEVONAIRE, PHONE, LONDON

And at Huddersfield

All Correspondence should be addressed to London
Established in 1864



COURT OF LIONS IN THE TRIBUNAL OF JUSTICE, ALHAMBRA COURT, CRYSTAL PALACE

The Lessons of Contesting are sometimes sweet—sometimes bitter

TO BANDS NOT COMPETING at CRYSTAL PALACE
“A Moorside Suite” “Egmont” “Hanover” “Accrington”
are now available from the publishers

Work the music during the next few weeks and see if your band is better, or as good as the competitors. It may not be so good.

Spend a few minutes to-day with the lower sections bands. These bands need your encouragement. Do not go to Grade Six and criticise young and struggling bands harshly. They are trying anyway—and doing their best. They are years away from Grade Two.

Just go round—if you have time—and listen to the various sections—beginning at the bottom. By the time you get to Grade Two you will have prepared your mind for the greatest of all contests—

THE 1928 CRYSTAL PALACE CHAMPIONSHIP

Keep your mind open about the bands, the music, the conductors, the adjudicators, the performances, and the deportment of the bands.

Make a few notes and compare your opinion with that of the official adjudicators, and remember—
the contest has not been won or lost until the last note is played.

6.30 p.m. ORGAN RECITAL by Mr. GATTY SELLARS

- | | |
|--|----------|
| 1. "Chœur de Fete" - - - - - | Sellars |
| 2. Fantasia on Old Welsh Airs - - - - - | Faulkes |
| 3. Toccata in F - - - - - | Driffill |
| 4. March from "The Meistersingers" - - - - - | Wagner |
| 5. "The Storm" - - - - - | Sellars |

THE MASSED BANDS

CALLENDER'S CABLE WORKS (London)	FODEN MOTOR WORKS (Cheshire)
CARLISLE ST. STEPHEN'S (Cumberland)	HARTON COLLIERY (Durham)
CARLTON MAIN (Yorkshire)	WINGATES TEMPERANCE (Lancashire)
CRESWELL COLLIERY (Derbyshire)	

Conductor - - - - - MR. J. HENRY ILES

PROGRAMME

- | | | |
|--|------------------------------|-----------------|
| 1. THE NATIONAL ANTHEM | THE MASSED BANDS | |
| 2. March | "RIGHT AWAY" | Herberte Jordan |
| | THE MASSED BANDS | |
| 3. Cornet Solo—(a) "SONG OF THE VOLGA BOATMEN" | | Russian Melody |
| Valse - (b) "DONAU WELLEN" | | Ivanovici |
| | THE MASSED BANDS | |
| 4. Descriptive Fantasia | "ON HAMPSTEAD HEATH" | Julius Dyson |
| | CALLENDER'S CABLE WORKS BAND | |
| 5. Fanfare and Chorale on the | "OLD HUNDRED" | Basil Windsor |
| | THE MASSED BANDS | |
| 6. Tone Poem | "LORENZO" | Thomas Keighley |
| | FODEN MOTOR WORKS BAND | |
| 7. Russian Dances—(a) "GOPAK" | | Moussorgsky |
| (b) "TREPAK" | | Tschaikowsky |
| | THE MASSED BANDS | |
| 8. Tone Poem | "KUBLA KHAN" | Bantock |
| | CARLISLE ST. STEPHEN'S BAND | |
| 9. March | "FOR ENGLAND" | Vivian May |
| | THE MASSED BANDS | |
| 10. Cornet Solo | "ALPINE ECHOES" | Basil Windsor |
| | HARTON COLLIERY BAND | |
| 11. Selection | SEA SONGS" | Old English |
| | THE MASSED BANDS | |
| 12. IMMEDIATELY AFTER the conclusion of the Concert, the Awards in the various Competitions held throughout the day will be shown on the screen. The numbers will correspond with those printed in the Official Programme. | | |

Seats, Prices - - - 2/-, 3/-, 4/- and 5/- including tax.

Seats can be booked from 10 a.m. at the Crystal Palace Box Office. Visitors are advised to BOOK EARLY



9TH FELDMAN'S 9TH
LITTLE GREEN BOOK
SOLO CORNET PARTS

CONTENTS:

WHEN DAY IS DONE.
 SO TIRED.
 THE ANGELUS WAS RINGING.
 I'M AWAY FROM THE WORLD.
 LET A SMILE BE YOUR UMBRELLA.
 I LEFT MY SUGAR STANDING IN THE RAIN.
 UNDER THE CLOVER MOON.
 WHEN I MET SALLY.

UNDER THE MOON.
 ROSALIE.
 WHY AM I BLUE?
 AFTER MY LAUGHTER CAME TEARS.
 AT THE END OF AN IRISH MOONBEAM.
 ROAM ON, MY LITTLE GIPSY SWEET-
 HEART.
 JUST WEE DEOGH-AN-DORIS.

24 COMMUNITYLAND (Selection) **24**
PAGES OF MUSIC

PRICE
6d.
 EACH.

B. FELDMAN & Co.,
125-7-9, SHAFTESBURY AVENUE, W.C.2
LONDON, ENGLAND

PRICE
6d.
 EACH.



Photochrom Copyright

THE CRYSTAL PALACE, THE LARGEST EXHIBITION BUILDING IN THE WORLD

Band Secretaries—get this catalogue!

Every Band Secretary should possess
a copy of this comprehensive catalogue
:: of Instruments and Accessories ::

To those Bands whom, wearied of inferior instruments and the consequences which are always inseparable from attempts to bargain with quality, the possession of this catalogue may well lead to the turning point in their fortunes. It is a proven fact that to be equipped with

BOOSEY'S INSTRUMENTS

is half-way to success in both the contesting and concert world.

Go to BOOSEY'S STAND and inspect and test the wide range of instruments available. It will be time well spent

BOOSEY & Co., Ltd. 295 REGENT ST., LONDON, W.1



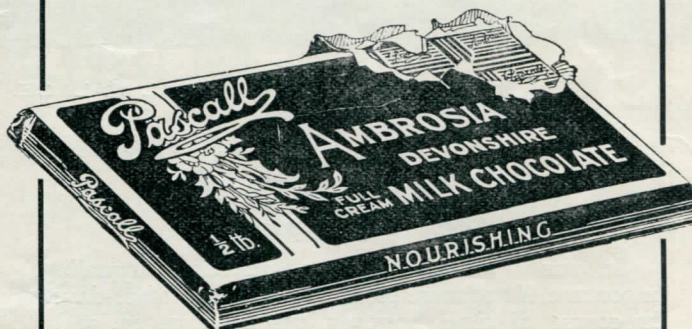
DOUBLE CUP MOUTHPIECES!

A boon to cornet players. If you want to win, use them. Top notes easy for false teeth, post free 6/-.

**H. LAWBACK, 3 Jeffrey's Place,
Camden Town** Telephone 4168

SPECIAL NOTICE

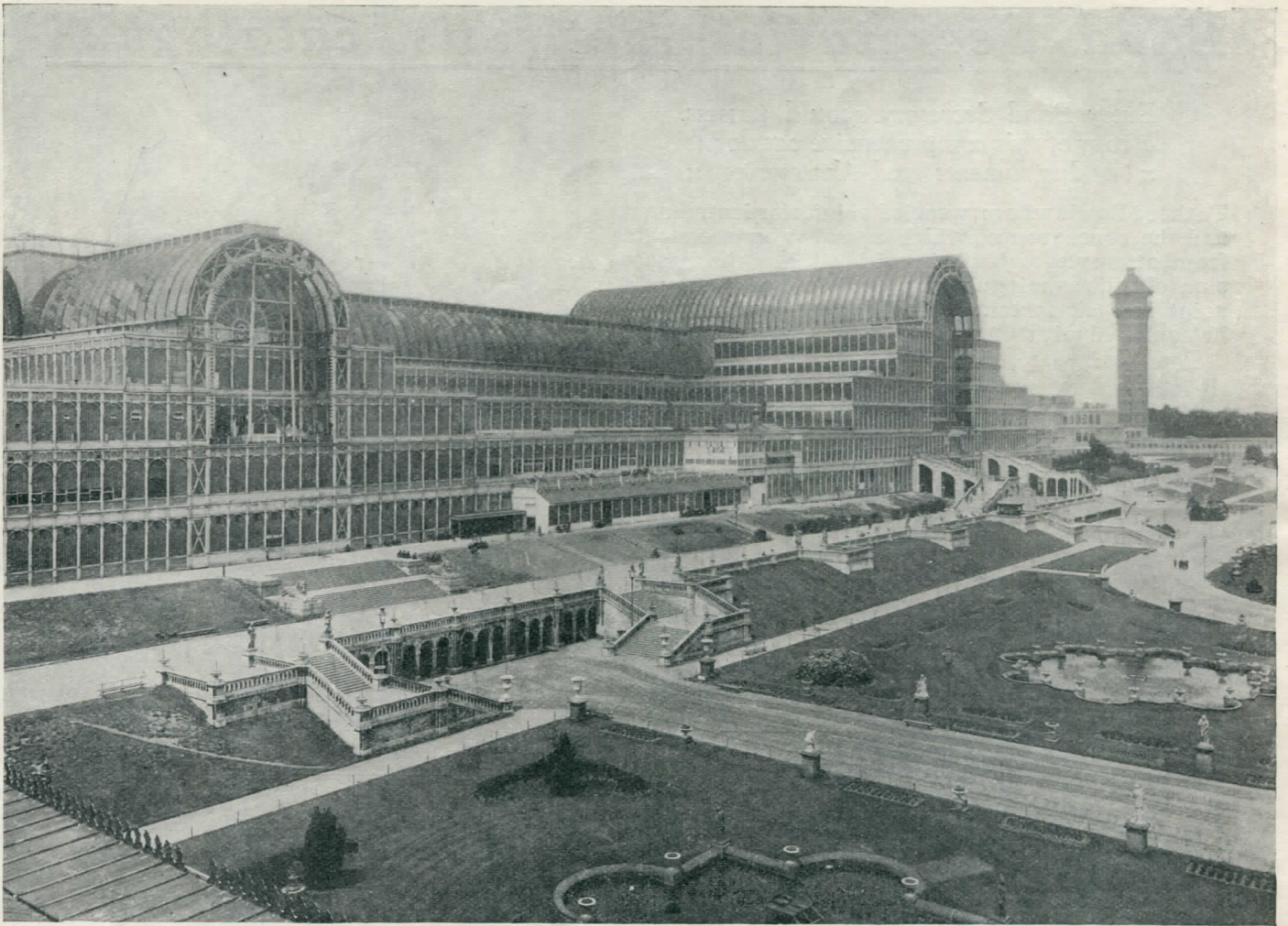
For the convenience of visitors to the National Band Festival, arrangements have been made to keep the Post Office open until after the awards have been announced. This information is not available until after the conclusion of the Evening Concert, and those desirous of utilising the facilities referred to will be able to dispatch their communications from the Post Office adjoining the Main Entrance, either by telephone, telegram or letter.



Made with full cream Devonshire Milk, Ambrosia Chocolate is undoubtedly the finest procurable. It is smooth to the palate; does not cloy, and is sustaining and nutritious. Presentation Caskets, filled with an excellent selection of Pascall specialities, are given free to all purchasers of Ambrosia who are successful in obtaining a complete set of cards which are to be found in all packets.

Start collecting now!

In Packets 8d. and 1/2



CRYSTAL PALACE. GENERAL VIEW

CRYSTAL PALACE

Continued from page 3

It was regarded as a function equally important, if not more so, than the Ascot of to-day. In course of time, however, custom changed, and these great flower shows were no longer an economic proposition. There was then an era of exhibitions, particularly of carriages and other means of conveyance as these became practicable, but here again, progress brought change in its stride, and exhibitions developed into sectional trade affairs, which could conveniently be held in smaller places.

However, the policy of the present management is to cater for the changed taste of the public whilst preserving many of those magnificent features which have become traditional: and whilst the Great Triennial Handel Festival, with its colossal choir and orchestra and most famous singers of the day still takes place periodically, the Crystal Palace and its grounds are also the scene of entertainment consistent with this Mechanical Age. This policy

is particularly well exemplified by the Cinder Track, which has been installed round the famous Football Ground, and which is now the scene of many thrills in the most up-to-date of all entertainments—Motor-Cycle Dirt Track Racing. Foresight was evidenced in embarking on this scheme, as the Crystal Palace track was one of the first placed in hand, and the sport was then unknown in England. Regard was also paid to the interests of that great English sport, Association Football, and now this ground is so equipped that Dirt Track Racing can be held throughout the summer, with Association and Rugby Football in the winter.

The Crystal Palace also possesses one of the finest athletic grounds in the kingdom, and no effort is spared to encourage healthy exercise, games and good competitive sports meetings. A quarter of a million sterling has been spent on the restoration and improvement of the building since the Crystal Palace became National property, and the whole structure is now in better condition than it has been at any time during the past half century.

ADJUDICATORS' NOTES ON THE PLAYING *See Next Saturday's* "BRITISH BANDSMAN"

THE BRITISH BANDSMAN

LETTERS: Address to "The British Bandsman" 210 Strand, London

TELEGRAMS: "Bandsman," 210 Strand, London.

PHONE: Central 9637.

PUBLISHING DAY: Friday.

NEWSAGENTS: Any Newsagent will supply "The British Bandsman." Single copies by post, 3½d.

SUBSCRIPTION: 13 weeks, 4/-; 26 weeks, 8/-

LATEST TIME for News and Advertisements, 1st post Tuesday

THIS PROGRAMME AND SOUVENIR HAS BEEN PRODUCED BY

PHOTOCHROM

Company - - Limited

(ASSOCIATED WITH HAYCOCK PRESS LTD.)

SPECIALISTS IN ALL BRANCHES OF ILLUSTRATED WORK

LEADING FEATURES

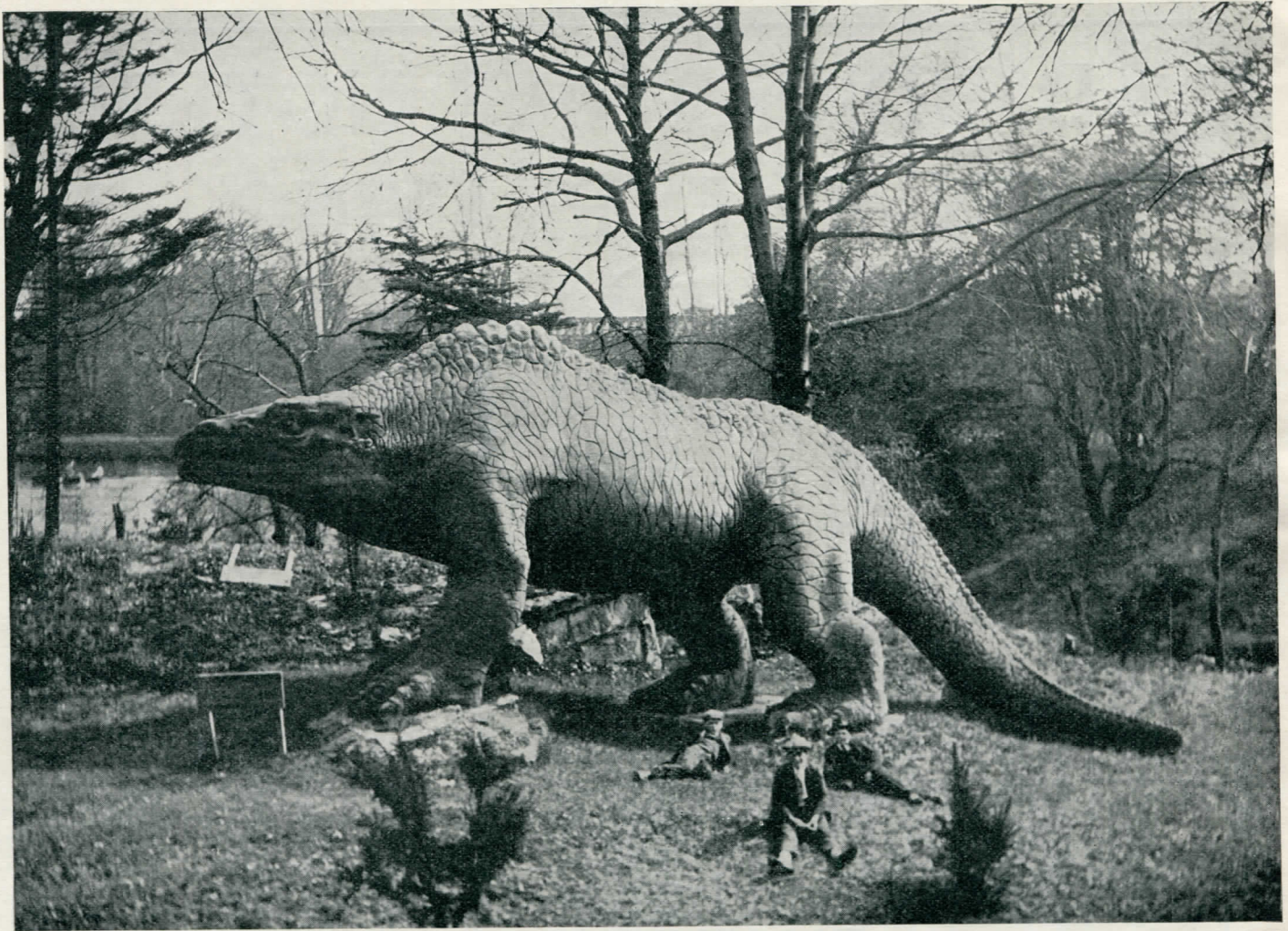
BOOKLETS . POSTERS . SHOWCARDS
POSTCARDS . AND ALL STYLES OF
PHOTOGRAPHIC REPRODUCTION.
DESIGNS AND ESTIMATES
SUBMITTED WITHOUT OBLIGATION

London Offices - - - 80 FLEET STREET, E.C. 4

Works - - - - TUNBRIDGE WELLS, KENT

*ADVERTISING
FOR ALL*

ADVERTISING
CALENDARS FOR
ALL TRADES ARE
PRODUCED FROM
STOCK DESIGNS
IN QUANTITIES
OF 100 UPWARDS



THE MEGALOSAURUS. IN THE ANIMAL PARK, CRYSTAL PALACE

The Grand Organ at the Crystal Palace

THE GREAT CONCERT ORGAN which dominates the Centre Transept of the Crystal Palace is one of the most played upon Concert Organs in the Continent of Europe, for during the summer season, as many as four (and sometimes five) recitals a day are given upon it, and for the remainder of the year, two daily.

Besides these recitals, it takes an all-important part in the huge Choral and other Festivals held on the Great Orchestra in the Centre Transept, in the Triennial Handel Festivals, and in the Great Good Friday and other Concerts.

The present fine instrument took the place of that erected in the Crystal Palace in 1854 by Messrs. Gray & Davison. The stop control in that instrument was in the French ventil system, and I believe the late W. J. Best recommended it. Happily it has now entirely given place to a modern instrument. The action altogether was worn out and the organ was out of date. Messrs. J. W. Walker & Sons were therefore entrusted with the work of replacement, and by them it was entirely remodelled in 1919-20. Everything was brought up to date, new tubular pneumatic action throughout, and new sound boards were installed.

Some of the old metal work which was good was used again, but, generally speaking a clean sweep was made. The most important step of lowering the pitch, (which was High Concert pitch) to the French Diapason Normal was taken. The new instrument was used for the first time at the Handel Festival in 1920, when these Triennial Concerts were resumed after the war. The summer that year was an abnormally hot one, and the new organ was put to a very severe test. It came out most successfully and has now thoroughly settled down into one of the finest and most brilliant instruments, as it undoubtedly is.

WALTER W. HEDGCOCK,

Musical Director and Organist of the Crystal Palace.

THE
PICTURE HOUSE
CRYSTAL PALACE

Now Showing
POLA NEGRI
in
THE SECRET HOUR
HORSEMAN OF THE PLAINS
Starring **TOM MIX**

Continuous Performance Daily 2.30 to 10.30
Prices (including tax and admission to the Palace) 6d., 9d., 1/3 and 1/10

THE KENNEL CLUB'S 67th
OPEN CHAMPIONSHIP SHOW

OCTOBER 10th and 11th

THE PREMIER DOG SHOW OF THE WORLD

Over 2,000 dogs of 78 different varieties

THE CRYSTAL PALACE GRAND INTER-
NATIONAL SHOW OF POULTRY, PIGEONS
and RABBITS

NOVEMBER 20th, 21st and 22nd



PARIS OVERNIGHT

VIA
**SOUTHAMPTON-
HAYRE**

(Waterloo dep. 9.p.m-Paris arr. 10.18.a.m)

OR
**NEWHAVEN-
DIEPPE**

(Victoria dep. 8.20p.m-Paris arr. 5.23a.m)

Business Routes

For tickets, reservation
of seats, etc., apply-
Continental Enquiry
Office, Victoria Station,
London, S.W.1.

SOUTHERN RAILWAY