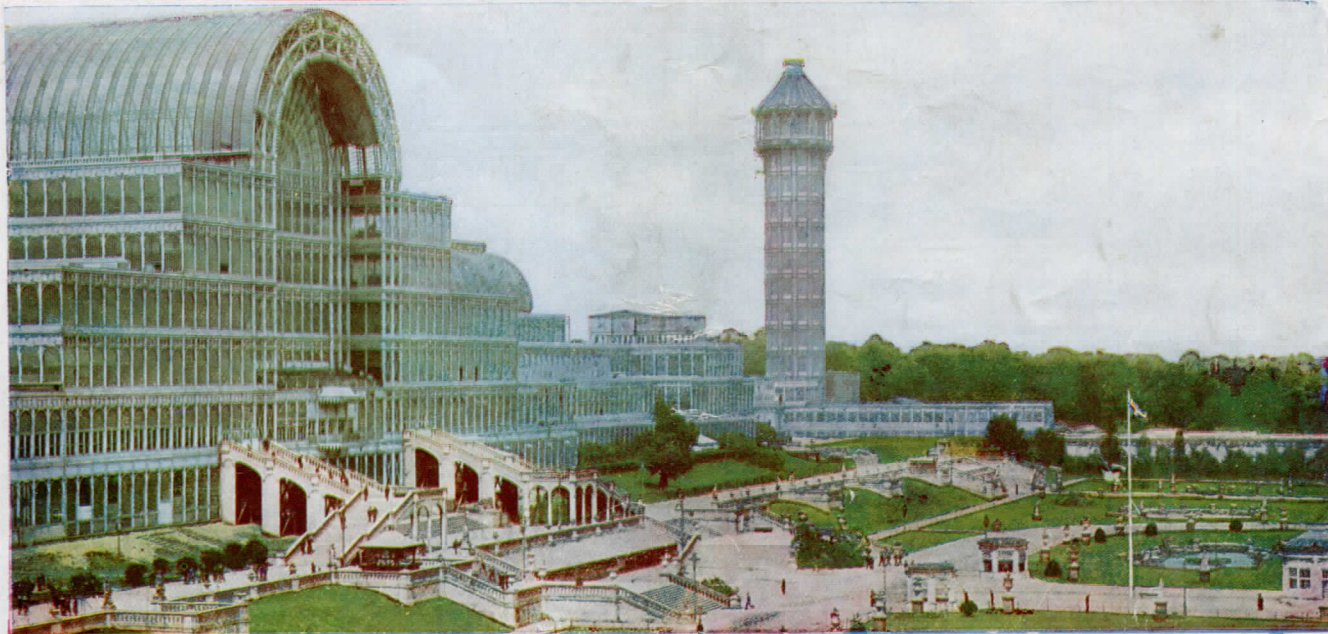




The 25th Annual Band Contest



being the 30th Anniversary of the
GREAT NATIONAL BAND FESTIVAL

*Programme & Souvenir
of the
Crystal Palace*



OFFICIAL PUBLISHERS THE PHOTOCHROM CO. LTD., LONDON AND TUNBRIDGE WELLS. EXCLUSIVE COPYRIGHT.

BIGGEST ENTRY ON RECORD

CRYSTAL PALACE BAND CONTEST!!

REGAL RECORDS

2/6

The Championship Test Piece:
"SEVERN SUITE" (*Sir Edward Elgar*)
will be issued

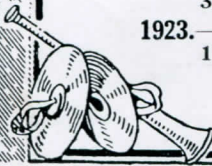
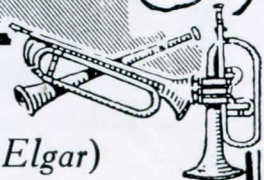
FIRST on REGAL Records

Order it to-day!

PREVIOUS PRIZE WINNERS ON REGAL RECORDS:

- 1929.—"VICTORY"
1st Prize Winners—CARLISLE (ST. STEPHEN'S) BAND
- 1928.—"A MOORSIDE SUITE"
2nd Prize Winners—HARTON COLLIERY BAND
- 1927.—"THE WHITE RIDER"
1st Prize Winners—CARLISLE (ST. STEPHEN'S) BAND
- 1926.—"AN EPIC SYMPHONY"
1st Prize Winners—ST. HILDA COLLIERY BAND
- 1925.—Overture, "JOAN OF ARC"
1st Prize Winners—MARSDEN COLLIERY BAND
- 1924.—Rhapsody, "ON THE CORNISH COAST"
1st Prize Winners—ST. HILDA COLLIERY BAND
3rd Prize Winners—NEWCASTLE (N.S.W.) WORKS BAND
- 1923.—Overture, "OLIVER CROMWELL"
1st, 2nd, and 3rd Prize Winning Bands

REGAL—always REGAL!





CRYSTAL PALACE

HENRY JAMES BUCKLAND - - - General Manager

THE
30th Anniversary of
the Great National
BAND FESTIVAL

(Being the Twenty-Fifth Band Contest)

SEPTEMBER 27th

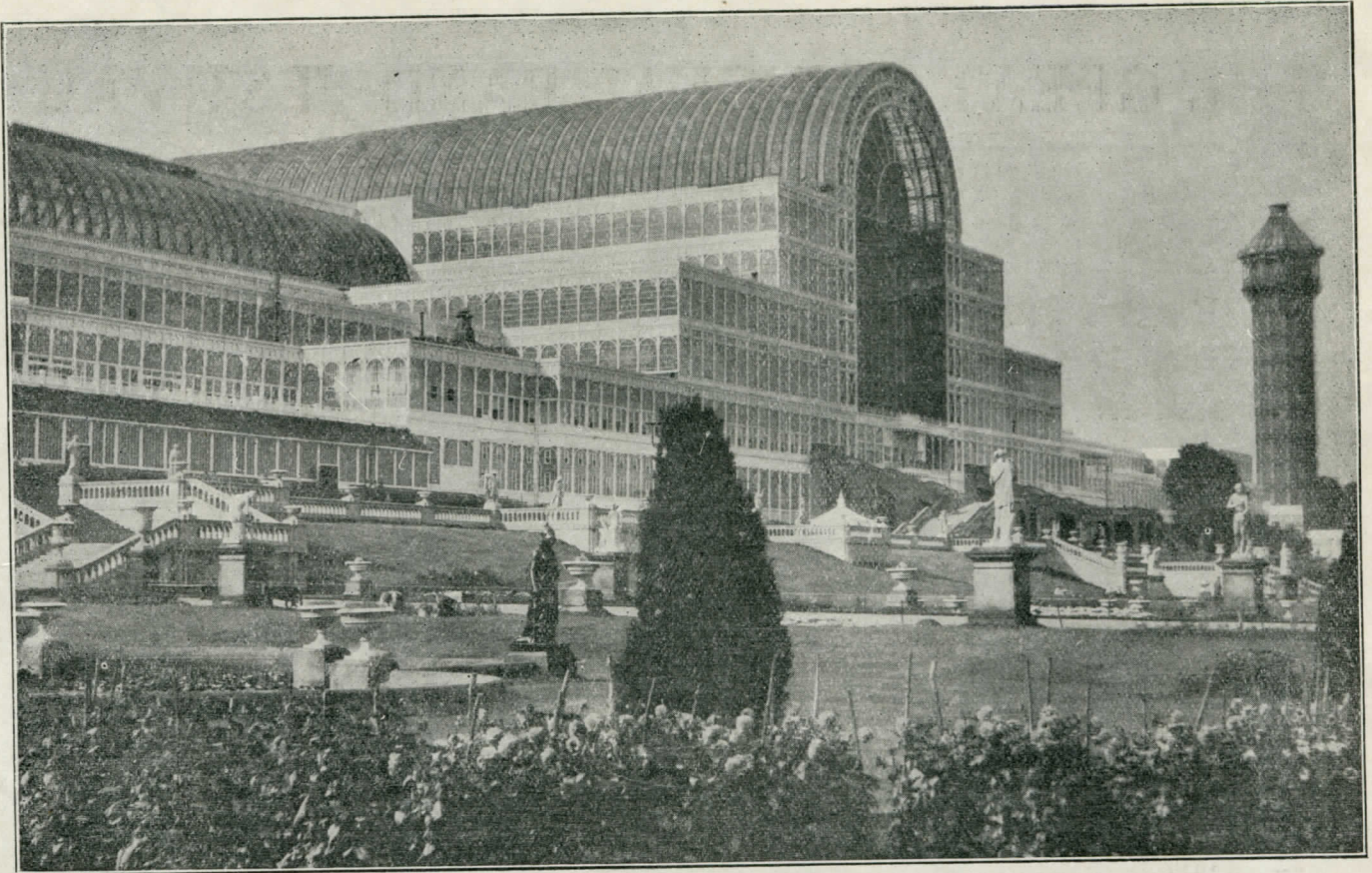
1 9 3 0

Under the Gracious Patronage of
HIS MAJESTY THE KING

Director and Founder - - -

Mr. J. HENRY ILES
(Officier d'Academie Francaise)

COPYRIGHT PUBLICATION
BY THE
PHOTOCHROM CO., LTD.
80 FLEET STREET, LONDON, E.C. 4



A GLIMPSE OF THE CRYSTAL PALACE FROM THE GARDENS

**YOU CAN'T GET AWAY FROM IT !
THE BESSON "PROTOTYPE"
INSTRUMENTS ARE THE BEST**

**THE LEADING BANDS SAY SO
THE LEADING BAND TRAINERS SAY SO
THE LEADING MUSICIANS SAY SO
CONTEST RESULTS PROVE IT**

LEADING 1930 RESULTS:

September Belle Vue. 1st Eccles Borough (Mr. J. Dow). Besson Set.

Bugle Festival, Cornwall (West of England Championship)

1st St. Dennis (Mr. C. H. Baker). Besson Set.

July Belle Vue. 1st Cadishead (Mr. W. H. Brophy). Besson Set.

**The great majority of Bands competing in to-day's Contests play
BESSON "PROTOTYPE"**

Besson 196-198 Euston Road, London, N.W.1
(Famous as Instrument Makers for nearly a Century)

THE GREAT NATIONAL BAND FESTIVAL

*THE NATIONAL BAND FESTIVAL
was founded in 1900 by Mr. J. HENRY ILES*

THE CRYSTAL PALACE IN 1930

JUST because the Crystal Palace was a great favourite with Queen Victoria, some people think that its attraction and utility ceased with her reign. To-day the old Palace enjoys a vigour unmatched since its original glory of 1851.

If success can be measured in terms of money, then the Crystal Palace, as we know it to-day, has certainly proved its successful development by its sound financial position.

Now the property of the people, it is run for the people, and well deserves its success, all revenue being applied to the further development of this national property.

A few years have wrought great changes and when, in 1914, Mr. Henry James Buckland took over the entire management on behalf of the Trustees, things were far from being in a happy state. Finances were at a low ebb, the grand building was in sad disrepair and it was a big man's job.

As the world knows, the Earl of Plymouth and the late Sir David Burnett, gave sterling help in inspiring and helping on the arrangements which made the Crystal Palace the Palace of the People in very truth. Notwithstanding the dislocation of four years of war, the big job was tackled by Mr. H. J. Buckland with the enthusiastic support of the Trustees and great energy and love of the work have combined to put the Crystal Palace where it is to-day.

Sometimes we live too near the great things to appreciate them. Very often the first request from visitors from abroad is to include a trip to the Crystal Palace. It represents something they have not got in their own countries and its fame has spread far beyond the guide book influence.

Faithfully it strives to-day to maintain its traditions, and as the largest exhibition building in the world, houses shows of all kinds, from the important Government Exhibitions, such as the World's Poultry Congress, recently concluded, to the more sporty functions, such as dog shows of the leading canine societies.

[Continued on page 18]

TO BRITISH BANDSMEN— A TRIBUTE

*"If music be the food of love,
Play on, give me excess of it."
—SHAKESPEARE ("Twelfth Night.")*

LOVERS of music these days are as innumerable as the sands of the shore, for however little the average Briton may be interested in the other Arts, he certainly does love to have his ears tickled with sweet and harmonious sounds.

To him an "excess" of music would appear to be quite impossible—he never seems to tire of listening, and when he isn't listening he is playing.

The appreciation of music has expanded wonderfully during recent years, and this appreciation is not restricted to any one class—it is practically universal.

The tremendous enthusiasm of the North Country and the Midlands seems to be spreading steadily South, and the National Band Festival attracts larger and still larger audiences every year. So it is fitting that this important and unique function—this friendly tournament of melody, should be held in a Palace that is a palace indeed, and, at the same time, perfect as to acoustics. In the Palace many thousands of music-lovers can be entertained without the slightest suggestion of crowding and its consequent discomforts.

In no other building in Britain can a vast crowd appear so comparatively small, and certainly none can rival its exquisite, park-like surroundings—a flashing, sparkling, crystal gem set amid an oasis of green.

A great many music enthusiasts are attracted, doubtless by the hearty spirit of emulation which runs through the band festival. Judges of good music are they, and no mean judges either, and scores of them could accurately forecast the coming decisions of the judges—not a simple task by any means.

The competitive instinct is probably the strongest of any in the human heart, and to watch (and listen) whilst band after band strives to demonstrate its superiority is always interesting, and frequently enthralling.

[Continued on page 17]

With their usual enterprise, the National Sunday League have arranged for the Band winning the Championship and Thousand Guinea Trophy to play on Sunday, September 28th, 1930, at the Finsbury Park Empire.

THE GREAT NATIONAL BAND FESTIVAL

is the "Mecca" of all Brass Instrument
Players, so it should be the desire of

ALL PLAYERS

to obtain the best instruments that
ARE MADE

The Instruments by **RUDALL, CARTE & CO.**
are the acme of perfection for only Skilled Craftsmen are
employed who are able to make instruments from start to finish.

NO MASS PRODUCTION

PRICES NO HIGHER

.....
SEE STAND NO. 8
.....

RUDALL, CARTE & CO., LTD.
23 BERNERS STREET, OXFORD STREET, W.

(Near Middlesex Hospital)

Established over a Century and a half.



THE BIG NOISE
BY WILL OWEN

PHOTOCROM
COPYRIGHT



ACTION COLOUR PHOTO
BY PHOTOCHROM CELESQUE PROCESS

MARCH OF THE GRENADIERS

(as played by the Brigade of Guards at the Trooping of the Colours, 1930)

Get YOUR Band Parts TO-DAY at
CAMPBELL, CONNELLY'S STAND

PRICE

3^{D.}

OUR SOLO CORNET BOOK

Published Specially for the Band Festival

HALF-PRICE FOR TO-DAY ONLY

PRICE

3^{D.}

SPECIAL OFFER!

5 Sets - 7/6
3 " - 5/-
1 Set - 2/-

BLUE PACIFIC MOONLIGHT

WE'RE UNCOMFORTABLE
GIVE YOURSELF A PAT ON THE BACK
DREAM MOTHER EVER SO GOOSEY
MELANCHOLY

I'M IN THE MARKET FOR YOU

SPECIAL OFFER!

5 Sets - 7/6
3 " - 5/-
1 Set - 2/-

MARCH OF THE GRENADIERS

CAMPBELL, CONNELLY & CO., Ltd., 10-11 Denmark Street, London, W.C. 2



SUNSHINE AND SHADOW IN THE STATUARY COURT, CRYSTAL PALACE

The Mecca Cafes

CATERERS BY APPOINTMENT TO THE CRYSTAL PALACE

Head Offices, Stores, etc.: **76 SOUTHWARK STREET, S.E. 1**

LONDON:—CAFES AND RESTAURANTS

54 Gresham Street.
Telegraph Street.
101 Leadenhall Street.
145 Cannon Street.
Broad Street.
14 Walbrook.
49 London Wall.

50/51 Fore Street.
31 Great St. Helens.
75b Queen Victoria Street.
3 Gresham Street.
9/10 Mark Lane.
23 Coleman Street.
67b Shaftesbury Avenue.

1 Whittington Avenue
69/70 Mark Lane.
139 Cannon Street.
King's Arms Yard.
140 Cheapside.
24 Lime Street.
21 St. Mary Axe.

15 Coptball Avenue.
68 Basinghall Street.
56 Ludgate Hill.
11a Queen Street.
11/12 Blomfield Street.
65/6 Chancery Lane.
143 Charing Cross Road.
57 Gracechurch Street.

PROVINCES

BIRMINGHAM

The Station Street Cafe,
Station Street.
The Kings Cafe,
Midland Arcade, New Street.
The Mecca Cafe,
Waterloo Street.
The Cafe Royal,
Prudential Buildings,
Corporation Street.

HULL

The Mecca Cafe,
Prudential Buildings,
King Edward Street.

CAMBRIDGE

The Mecca Cafe,
Petty Cury.

SHEFFIELD

The Haymarket Hotel,
Haymarket.

LIVERPOOL

The Cotton Exchange Cafe,
Ormond Street.
The Mecca Cafe,
6 Drury Lane.
The Exchange Cafe,
Exchange Flags.
The Mecca Cafe,
Clayton Square.

BRIGHTON

The Mecca Cafe,
105 King's Road.

BRIDLINGTON

The Mecca Cafe,
8/9 Garrison Street.

MANCHESTER

The Mecca Cafe, 37 Cross Street.

ST. ALBANS

The Mecca Cafe, Market Place.

TUNBRIDGE WELLS

The Mecca Cafe,
44/46 The Pantiles.

HOTELS.

THE ROOF GARDEN HOTEL, John Bright Street, BIRMINGHAM.

THE HAYMARKET HOTEL, King Street, SHEFFIELD.

SOLE CATERERS AT SHERRY'S DANCE HALL, BRIGHTON, ROYAL OPERA HOUSE DANCES, COVENT GARDEN, PALAIS DE DANSE, NOTTINGHAM, AND REGAL CINEMA, NORWOOD

The Great Championship Contest

for the

CRYSTAL PALACE ONE THOUSAND GUINEA TROPHY

LAST YEAR'S WINNER
CARLISLE ST. STEPHEN'S

12 noon—In the Concert Hall

Grand Championship Brass Band Contest for the Crystal Palace One Thousand Guinea Challenge Trophy and the "Daily Telegraph" Challenge Cup, and other Prizes

Adjudicators:— Mr. HENRY GEEHL
Mr. T. J. REES
Mr. GEORGE NICHOLLS

PRIZES

FIRST PRIZE.—The Championship of Great Britain and the Colonies, the winners of which will be the holders for the year (under special regulations) of the CRYSTAL PALACE NATIONAL CHALLENGE TROPHY, of the value of One Thousand Guineas, and a CASH PRIZE OF FIFTY POUNDS, and Messrs. BOOSEY & HAWKES, LTD., 295 Regent Street, London, W., will present any article from their combined catalogue, or individual catalogues, to the catalogue value of THIRTY GUINEAS.

Each Member of the Band, including the Bandmaster and Secretary, will also be presented with the CRYSTAL PALACE CHAMPIONSHIP BRONZE MEDAL, with Bar and Clasp.

Members of the Band winning the Trophy for the second time will be presented with the same medal IN SOLID SILVER; and Members of the Band winning the Trophy for the third time will be presented with SOLID GOLD MEDALS.

SECOND PRIZE.—THE DAILY TELEGRAPH CHALLENGE CUP (subject to regulations), value Fifty Guineas, and a CASH PRIZE OF FORTY-FIVE POUNDS, and Messrs. BESSON & Co., LTD., 196/8 Euston Road, London, N.W. 1, sole manufacturers of the celebrated "PROTOTYPE" instruments, will present one of their famous "New Standard" Tenor Slide Trombones, handsomely silver-plated and embellished, complete in attaché case, valued at TWENTY-ONE GUINEAS.

THIRD PRIZE.—A CASH PRIZE OF FORTY POUNDS, and THE UNIFORM CLOTHING & EQUIPMENT Co., LTD., 10/11 Clerkenwell Green, London, E.C. 1, will present One Set of Music Stands and One Set of Band Books, printed in gold or silver lettering with the name of the Band and Instrumentation, valued at SEVENTEEN GUINEAS.

FOURTH PRIZE.—A CASH PRIZE OF THIRTY-FIVE POUNDS, and Messrs. RUDALL, CARTE & Co., LTD., 23 Berners Street, Oxford Street, London, W. 1, will present One latest model Bb Cornet, with double water keys, silver-plated, in case, valued at SIXTEEN POUNDS.

FIFTH PRIZE.—A CASH PRIZE OF THIRTY POUNDS, and THE LAWRENCE WRIGHT Music Co., Denmark Street, Charing Cross Road, London, W.C. 2, will present one silver-plated "Clippertone" Cornet, valued at FIFTEEN GUINEAS.

SIXTH PRIZE.—A CASH PRIZE OF TEN POUNDS, and THE ARMY & NAVY SUPPLY STORES, 118/120 Praed Street, Paddington, London, W. 2, will present one complete Uniform Outfit for the Bandmaster, including Frockcoat, Trousers, Cap, and also a Baton, to be selected to the winning band's design, to the total value of FIFTEEN POUNDS.

1. CHAMPIONSHIP CONTEST

TEST PIECE: "THE SEVERN SUITE" Op. 87 - Sir Edward Elgar

No.	Band	Conductor	Draw	Result	No.	Band	Conductor	Draw	Result
1.	Black Dyke Mills ...	W. Halliwell ...	17	2	10.	Luton Red Cross ...	E. S. Carter ...	9
2.	Brighouse and Rastrick ...	F. Berry ...	5	11.	Metropolitan Works ...	W. Halliwell ...	7
3.	Carlisle St. Stephen's ...	W. Lowes ...	2	12.	Rothwell Temperance ...	N. Sidebottom ...	11
4.	Carlton Main Frickley Coll. ...	N. Thorpe ...	3	13.	Scottish C.W.S. ...	J. A. Greenwood ...	10	6
5.	Creswell Colliery Institute ...	J. A. Greenwood ...	1	14.	St. Dennis ...	C. H. Baker ...	16
6.	Crystal Palace ...	W. Reynolds ...	12	4	15.	Sowerby Bridge ...	G. T. Bancroft ...	8
7.	Foden's ...	F. Mortimer ...	14	5	16.	Wigston Temperance ...	C. Moore ...	13
8.	Harton Colliery ...	W. Halliwell ...	15	5	17.	Wingatone Temperance ...	H. Moss ...	3
9.	Irwell Springs ...	W. Halliwell ...	4					

Admission to Concert Hall TWO SHILLINGS

NOTE.—The Director's Office is in front of the Concert Hall. At "THE BRITISH BANDSMAN" Stand, adjoining, can be obtained the Conductor's parts of the Test Pieces—Price One Shilling.

A MUSICAL EXHIBITION

By all the Leading Musical Instrument
Manufacturers, etc.

WILL BE HELD IN THE SOUTH NAVE

See List of Exhibitors, Page 17

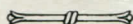
Lawback Bros. Famous Improved Double-cup Mouthpiece, Regd. No. 751,258

THE KEITH PROWSE STAND

WILL AGAIN DISPLAY A COMPLETE RANGE OF

BAND INSTRUMENTS

Premier Drums,
Accessories, Fittings and Novelties



ATTRACTIVE SPECIAL CONTEST DAY OFFERS

Including 25 only B-Flat Cornets in Brass, Light Action,
Nickel Silver Valves - 35/-; complete in case, 42/-

“QUALITY INSTRUMENTS AT A MODERATE PRICE”

KEITH PROWSE BRASS AND MILITARY

MILITARY
30 -
PER YR.

BAND CLUB

BRASS
20/-
PER YR.

WITHIN SIX MONTHS OF THE FORMATION OF THE ABOVE CLUB OUR
SUBSCRIBERS RECEIVED THE WORLD-WIDE HIT, “**STEIN SONG**,”
AND NOW WE GIVE YOU THREE NEW SENSATIONAL SUCCESSES

JOIN TO-DAY



DON'T DELAY

RECENT STANDARD WORKS

BELLS ACROSS THE MEADOWS
VOICE OF THE BELLS
BABYLONIAN NIGHTS
Ketelbey's DEVOTION
Shaw's MELODY
GRIDIRON CLUB } 2 New SOUSA
BLACKHORSE TROOP } Marches
The Famous Savoy MEDLEYS

AFTER YOUR KISS

MY ANGEL MOTHER

MY HEART BELONGS
TO THE GIRL WHO
BELONGS TO SOME-
BODY ELSE

NEW POPULAR WORKS

STEIN SONG
DARK RED ROSES
EMPIRE PARADE
WE'RE ALL HAPPY
'LEVEN THIRTY SATURDAY NIGHT
CUCKOO WALTZ

Minimum of 18 numbers a year guaranteed

“CHEAPEST AND BEST—COMPARED WITH THE REST”

KEITH PROWSE & CO., LTD.,

Wholesale and Instrumental Dept.
159 New Bond St., London, W. 1

Band Music Dept.
42-43 Poland St., London, W. 1

11.30 a.m.—In the Dance Hall

Brass Band Contest for the "Daily Express" Challenge Shield and "The People" Challenge Shield and other Prizes

Adjudicators:—Dr. THOMAS KEIGHLEY
Mr. CHARLES WARD

PRIZES

- FIRST PRIZE.—THE DAILY EXPRESS CHALLENGE SHIELD (subject to regulations) value Fifty Guineas, and a CASH PRIZE OF TWENTY POUNDS, and Messrs. FELDMAN & Co., 125/129 Shaftesbury Avenue, London, W.C. 2, will present one Boosey Bb Cornet, N.V.A., triply silver-plated and engraved, valued at FOURTEEN GUINEAS.
- SECOND PRIZE.—THE PEOPLE CHALLENGE SHIELD (subject to regulations), and a CASH PRIZE OF FIFTEEN POUNDS, and Messrs. BEEVERS, 26 Aldermanbury, London, E.C. 2, will present one Bandmaster's Frockcoat Suit and Cap, or a Set of Band Caps, either to the value of TWELVE GUINEAS.
- THIRD PRIZE.—A CASH PRIZE OF TWELVE POUNDS, and Messrs. CAMPBELL, CONNELLY & Co., Ltd., 10/11 Denmark Street, Charing Cross Road, W.C. 2, will present one Cornet, silver-plated and especially engraved, in a cowhide attaché-shaped case, made by Coueson & Co., valued at TEN GUINEAS.
- FOURTH PRIZE.—A CASH PRIZE OF TEN POUNDS, and Messrs. KEITH, PROWSE & Co., Ltd., 159 New Bond Street, London, W. 1, will present one Bb Cornet, silver-plated and engraved, contesting model, complete in case, valued at TEN GUINEAS.
- FIFTH PRIZE.—A CASH PRIZE OF EIGHT POUNDS, and A. M. PHILPOT, Esq., 354 Beech Hill, Luton, will do repairs and silver-plating to the value of SEVEN POUNDS TEN SHILLINGS.

SECTION 2. GRAND SHIELD CONTEST

Test Piece—SELECTION	"THE MASTERSINGERS"	Wagner
No.	Band	Conductor
1.	Baxendale's Works	J. A. Greenwood
2.	Cambridge Railway	B. McCann
3.	Colne Borough	W. Pollard
4.	Connah's Quay	J. A. Hughes
5.	Crookhall Colliery	W. Richards
6.	Dunlop Works	W. A. Tomlinson
7.	Edmonton	W. Tyrrell
8.	Emlyn Collieries	D. Williams
9.	Hanwell	J. C. Dyson
10.	Heworth Colliery	G. Hawkins
11.	Hickleton Main	T. Hunter
12.	Horden Colliery	J. Foster
13.	Morris Motors	S. V. Wood
14.	Palmer's Works	G. Snowden
15.	Pleasley Colliery	H. Lambeth
16.	Raunds Temperance	J. A. Greenwood
17.	Royal Fusiliers (1st Cadet Batt.)	W. Greenwood
18.	St. Pancras	F. Dimmock
19.	Skipton	W. Halliwell
20.	Stanley Subscription	P. Holgate
21.	Wallsend United Collieries	J. Boddice
22.	Willesden Town	C. McManus
23.	Wolverton Town	A. F. Brooks
24.	Workington Town	J. J. Fisher

11.30 a.m.—North Tower Gardens

Brass Band Contest or the "Daily Sketch" Challenge Cup and "The News and Chronicle" Trophy and other Prizes

Adjudicators:—Mr. HUBERT BATH
Mr. JAMES OLIVER

PRIZES

- FIRST PRIZE.—THE DAILY SKETCH CHALLENGE CUP (subject to regulations), value Fifty Guineas, and a CASH PRIZE OF FIFTEEN POUNDS, and Messrs. F. TOMKINS & SON, 71 Palmerston Road, Northampton, will present one Tomkins Class "A" Cornet, valued at SEVEN GUINEAS.
- SECOND PRIZE.—THE NEWS AND CHRONICLE TROPHY (subject to regulations), and a CASH PRIZE OF TEN POUNDS, and Messrs. T. REYNOLDS, SENR. & SONS, 43 Chapel Street, Salford, Manchester, will do repairs or silver-plating to the value of SIX POUNDS.
- THIRD PRIZE.—A CASH PRIZE OF EIGHT POUNDS, and J. P. HULL, Esq., 39 Glebe Road, Bromley, Kent, will present one Cornet and Case, valued at FIVE GUINEAS.
- FOURTH PRIZE.—A CASH PRIZE OF SEVEN POUNDS, and Messrs. W. PARTRIDGE & Co., 175 Clapham Road, London, S.W. 9, will present one Set of No. 1 Tone Peg Bells, valued at FIVE GUINEAS.
- FIFTH PRIZE.—A CASH PRIZE OF FIVE POUNDS, and Messrs. BOSWORTH AND Co., Ltd., 8 Heddon Street, Regent Street, London, W. 1, will present one Set of Tubular Bells, valued at FIVE GUINEAS.

SECTION 3. JUNIOR CUP "A" CONTEST

Test Piece	CONCERT SUITE	César Cui
No.	Band	Conductor
1.	Alexandra (L.M.S.)	J. A. Greenwood
2.	Backworth Collieries	G. Hawkins
3.	Baldwin's	T. Brennan
4.	Brixton & Clapham	R. H. Leedham
5.	Chislet	J. Hamblyn
6.	Clayton	F. Berry
7.	Coventry	C. Shephard
8.	Falmouth Town	T. J. Chainey
9.	Glasgow Corporation Gas Dept.	H. Bennett
10.	Great Central & Metropolitan	W. Smith
11.	Lambeth Borough	G. Daley
12.	Lewisham Borough	W. J. Stevens
13.	Long Eaton	H. Everts
14.	Manvers Main	H. Lodge
15.	Melingriffith Volunteer	T. J. Powell
16.	Meltham Mills	W. Wood
17.	Morrison Collieries	W. L. Turnbull
18.	Port Talbot District Workmen's	T. Entwistle
19.	Radstock	T. Valentine
20.	Ripley United	W. J. Saint
21.	Royston Subscription	G. Buckle
22.	Rushden Town	J. Roberts
23.	Swindon G.W.R.	T. Valentine
24.	Urpeth Collieries	J. Young
25.	Watford	R. Hutchinson
26.	Whitehaven Borough	J. J. Fisher
27.	Wood Green	W. Dolling
28.	Yeovil Town	J. B. Yorke

11.30 a.m.—On the Terrace Bandstand

Brass Band Contest for the "Daily Mirror" Challenge Cup, the "Pearson's Weekly" Challenge Shield and other Prizes

Adjudicators:—Mr. JAMES BRIER
Mr. CHARLES ANDERSON

PRIZES

- FIRST PRIZE.—THE DAILY MIRROR CHALLENGE CUP (subject to regulations), value Fifty Guineas, and a CASH PRIZE OF FIFTEEN POUNDS, and Messrs. LAWBACK BROS., 1 Hawley Road, Kentish Town, N.W., will present one Ebony Baton, in case, three chased silver mounts, folding model, valued at TWO GUINEAS.
- SECOND PRIZE.—THE PEARSON'S WEEKLY CHALLENGE SHIELD (subject to regulations), value Fifty Guineas, and a CASH PRIZE OF TEN POUNDS, and Messrs. ALEC. V. REYNOLDS, Ltd., 138 Chester Road, Manchester, will present one Cornet Case, special attaché-case shape, in best brown cowhide, valued at TWO GUINEAS.
- THIRD PRIZE.—A CASH PRIZE OF SEVEN POUNDS.
- FOURTH PRIZE.—A CASH PRIZE OF FIVE POUNDS.
- FIFTH PRIZE.—A CASH PRIZE OF THREE POUNDS.

SECTION 4. JUNIOR CUP "B" CONTEST

Test Piece	CONCERT SUITE	César Cui
No.	Band	Conductor
1.	Beswick	J. Fraser
2.	Bristol and District N.U.R.	J. H. Cozens
3.	Cardiff City Tramways	E. Jones
4.	Darlington Forge	G. G. Cooper
5.	Earls Barton Old	W. Groome
6.	Finedon Old	A. Remington
7.	Goring and Streatley B.L.	C. Baker
8.	Headington	W. F. Brooks
9.	Kirkby Colliery	A. E. Grant
10.	Leyton Borough	H. Rundle
11.	Lister's Works	C. A. Cooper
12.	Lumley Colliery	P. Buckle
13.	Milburn Model	W. Carrigill
14.	Milnsbridge Socialist	F. Braithwaite
15.	Northfleet	F. Dimmock
16.	Northampton Borough	C. A. Anderson
17.	Rowntree's Cocoa Works	H. Lambeth
18.	Rugby Town	S. J. Bedford
19.	Sheffield Corporation Tramways	J. P. Davison
20.	Spensorborough Victoria	L. Dyson
21.	Stanford-le-Hope Town	T. Nicholson
22.	Swadlincote Town	G. C. Sharp
23.	Thornley Colliery	E. Kitto
24.	Tilbury Town	G. T. Nicholls
25.	Tredegar Workmen's	E. Shaw
26.	Walsall L.M.S.	H. Heyes
27.	West Bromwich Excelsior	J. T. Hughes
28.	Viewsley and West Drayton	A. W. Allen

Make YOUR First Call The WRIGHT Stall!

FOR

THE WRIGHT CORNET BOOK, No. 7

JUST PUBLISHED

Containing all the Latest Dance Successes, including:

"MEET ME IN MY DREAMS TO-NIGHT," "RO-RO-ROLLIN' ALONG," "WHEN I PASSED THE OLD CHURCH DOOR," "HANDSOME GIGOLO," "ON THE SUNNY SIDE OF THE STREET," "LAZY LOUISIANA MOON," "THE SUNSHINE OF MARSEILLES," "AMY," "MOLLY," "HAPPY DAYS ARE HERE AGAIN," "THE CROWNING OF THE COTTON QUEEN," "LUCKY ME, LOVABLE YOU," "SILV'RY MOON," etc., etc.

JOIN OUR BAND CLUB TO-DAY!

And avail yourself of the Special Discount of 10 per cent. This applies to the Brass and Military, Orchestral and Pianoforte Subscriptions, besides the Purchase of Brass and Military Band Music. **This special concession is for TO-DAY ONLY**, so take this great opportunity of saving money and call at our Stall **NOW!**

Phones :
TEMPLE BAR 2141
(5 lines)

THE LAWRENCE WRIGHT MUSIC CO.,
19 Denmark Street, Charing Cross Road, London, W.C. 2

Telegrams :
VOCABLE,
WESTCENT,
LONDON

EVANS' UNIFORMS

The Oldest Original Firm

UNBEATABLE VALUE—FIT—WORKMANSHIP
COMPLETE SATISFACTION GUARANTEED

Present Contractors to:

Foden's Motor Works Band	Crystal Palace Band
Wingates Temperance Band	Callenders' Cable Wks. Band
Creswell Colliery Band	Highgate Silver Band
Eccles Borough Band	Gt. Central & Met. Band
Horwich R.M.I. Band	Hanwell Silver Prize Band
Harton Colliery Band	Edmonton Silver Band
Irwell Springs Band	Brixton & Clapham Band
Hebden Bridge Band	Haggerston Silver Band
Crosfield's Works Band	British Legion H.Q. Band
Glazebury Prize Band	St. Dennis Silver Prize Band
Hasland Silver Band	Park & Dare Workmen's
South Moor Colliery Band	Emlyn Collieries Band
Adamson Military Band	Govan Burgh Band
Royal Oakeley Silver Band	Reid Memorial Band, Belfast
etc. etc. etc.	

Samples and Coloured Catalogue, Carriage Paid
REPRESENTATIVE TO MEASURE, FREE OF CHARGE

THE
UNIFORM CLOTHING & EQUIPMENT Co., Ltd.
10, 11 CLERKENWELL GREEN, LONDON, E.C. 1.

Telephones: CLERKENWELL 6682 & 5226 Telegrams: "UNIQUP," LONDON

Also at
MANCHESTER **GLASGOW** **BELFAST**
Phone: PENDLETON 144 Phone: CENTRAL 519 Phone: BELFAST 6872
CARDIFF and ST. DENNIS, CORNWALL

Northern Representative: Mr. J. CLARKSON
47 Barrfield Road, Pendleton, Manchester



11.30 a.m.—In the Canadian Building

Brass Band Contest for the "Caswell's" Challenge Shield and other Prizes

Adjudicators:—Mr. W. J. PARRY JONES
Mr. TOM EASTWOOD

PRIZES

- FIRST PRIZE.—THE CASSELL'S CHALLENGE SHIELD (subject to regulations), value Fifty Guineas, and a CASH PRIZE OF TEN POUNDS.
SECOND PRIZE.—A CASH PRIZE OF EIGHT POUNDS.
THIRD PRIZE.—A CASH PRIZE OF FIVE POUNDS.
FOURTH PRIZE.—A CASH PRIZE OF FOUR POUNDS.
FIFTH PRIZE.—A CASH PRIZE OF THREE POUNDS.

SECTION 5. JUNIOR SHIELD "A" CONTEST

No.	Band	Conductor	Draw	Schubert Result
1.	Berkhamsted Excelsior...	J. Hager...		
2.	Boscombe ...	C. J. Young ...		
3.	Carlisle Buffalo ...	J. J. Ruddick ...		
4.	Chesham Town ...	W. Greenwood ...		
5.	Coxlodge Institute ...	G. J. Ritchie ...		
6.	Denby Dale ...	N. Thorpe ...		
7.	Doncaster N.U.R. ...	J. W. Ellis ...		
8.	Elliott Metal Works ...	H. Tideswell ...		
9.	Fakenham Town ...	J. Ord Hume ...		
10.	Firbeck Colliery ...	H. Kennedy ...		
11.	Friary Brewery ...	J. C. Dyson ...		
12.	Greensplatt ...	C. H. Baker ...		
13.	Haggerston ...	A. Chandler ...		
14.	Harrogate ...	R. Littlewood ...		
15.	King's Heath Olde ...	J. E. Hewes ...		
16.	Lycett Mission ...	F. Dimmock ...		4
17.	"Manchester Chronicle" Employees	J. Dow ...		
18.	Metropolitan Cable Works ...	E. H. Alder ...		
19.	Newhall Town ...	J. J. Gibson ...		
20.	Newsome's Public Works ...	W. Warburton ...		
21.	Paulton ...	R. W. Kingman ...		
22.	Redcar Works ...	T. C. Beekman ...		
23.	Ripon City ...	H. W. Hill ...		
24.	Ryhope Colliery... ..	R. Clark ...		
25.	Shirebrook ...	J. Levick ...		
26.	Sidmouth Town ...	T. G. Moore ...		
27.	Soham Comrades ...	F. J. Talbot ...		5
28.	Standfast Works ...	A. E. Brownbill ...		
29.	Stretford Old ...	J. Jennings ...		
30.	West Bromwich Borough ...	I. Perrin... ..		

11.30 a.m.—In the School of Art

Brass Band Contest for the "Iles" Challenge Shield and other Prizes

Adjudicators:—Mr. J. EATON
Mr. DAVID ASPINALL

PRIZES

- FIRST PRIZE.—THE ILES CHALLENGE SHIELD (subject to regulations), value Fifty Guineas, and a CASH PRIZE OF EIGHT POUNDS.
SECOND PRIZE.—A CASH PRIZE OF SEVEN POUNDS.
THIRD PRIZE.—A CASH PRIZE OF FIVE POUNDS.
FOURTH PRIZE.—A CASH PRIZE OF THREE POUNDS.
FIFTH PRIZE.—A CASH PRIZE OF TWO POUNDS.

SECTION 6. JUNIOR SHIELD "B" CONTEST

No.	Band	Conductor	Draw	Schubert Result
1.	Almondbury ...	W. H. Shaw ...	23	
2.	Barnard Castle ...	J. M. Wright ...	13	
3.	Black Dyke Mills Juniors ...	H. Hepworth ...	5	2
4.	Burton Excelsior ...	E. Booth ...		
5.	Canterbury City... ..	T. G. Young ...	7	
6.	Caterham... ..	F. Snow ...	6	
7.	Cawston and District ...	J. Singleton ...	4	
8.	Chatteris Town ...	E. A. Double ...	13	
9.	Chichester City ...	E. D. Shepherd ...	24	
10.	Childs Hill ...	T. A. Cheek ...	26	
11.	Croft ...	C. Moore ...	12	
12.	Earls Shilton ...	R. W. Iliff ...	17	
13.	Erith Town ...	J. Hart ...	58	
14.	Forest Row and District ...	O. H. Taylor ...	22	
15.	Grangewood ...	W. Reynolds ...	16	4
16.	Haywards Heath Town ...	G. Bosley ...	15	
17.	Hepworth Iron Works... ..	E. Kaye... ..	17	
18.	Indian Queens ...	F. Knight ...	19	
19.	Llansaint Temperance ...	T. Valentine ...	10	
20.	Llay Main Colliery ...	J. Donlan... ..	29	
21.	Manea ...	B. M. Setchfield ...	11	
22.	North Evington W.M.C. ...	C. A. Anderson... ..	11	
23.	Poolsbrook Wesleyan ...	E. Crich ...	30	
24.	Redhill Town ...	R. H. Young ...	15	5
25.	Sheringham Temperance ...	F. Wallwork ...	18	
26.	Swinton Town ...	H. Morton ...	14	
27.	Truro City ...	G. W. Cave ...	24	
28.	Wellingborough L.M.S....	A. Remington ...	26	
29.	Windsor Prize ...	T. Dooley ...	16	

BEEVER'S UNIFORMS

The firm with 66 years' reputation for Value, Fit and complete satisfaction.

We are Contractors to the following Bands

ST. HILDA'S, Winners of the World's Championship, 1912, 1920, 1921, 1924 and 1926
CARLISLE ST. STEPHEN'S World's Champions, 1927 & 1929
IRWELL SPRINGS
BESSES O' TH' BARN
HARTON COLLIERY
PLEASLEY COLLIERY
AMINGTON
DOVE HOLES
NUTGROVE
CARLTON MAIN
BOSWERY BRIDGE
TENDLETON PUBLIC

YORKSHIRE MILITARY
DANEMORA STEEL WORKS
BOLSOVER COLLIERY
BLACK DYKE MILLS JUNIOR
CROYDON BOROUGH
HEADINGTON SILVER
ST. PANCRAS
BARROW SHIPYARD
WILLESDEN TOWN
BRIGHOUSE & RASTRICK
EARL SHILTON
YIEWSLEY & WEST DRAYTON
RYHOPE COLLIERY
BOARHURST SILVER
COXLODGE INSTITUTE, etc., etc.

Coloured List of Designs and Samples sent Free on Application
Representative sent to Measure Free of Charge

BEEVER'S

(JAMES BEEVER & CO)

26 ALDERMANBURY, LONDON, E.C.2

Phone: Metropolitan 3272. Telegrams: Beevonaire, Phone, London

And at Huddersfield

All Correspondence should be addressed to London
Established in 1864

SPECIAL NOTICE

For the convenience of visitors to the National Band Festival, arrangements have been made to keep the Post Office open until after the awards have been announced. This information is not available until after the conclusion of the Evening Concert, and those desirous of utilising the facilities referred to will be able to dispatch their communications from the Post Office adjoining the Main Entrance, either by telephone, telegram, or letter.

11.30 a.m.—In the Smoking Room

Brass Band Contest for the "Champion Journal" Challenge Cup
and other Prizes

Adjudicators :—Mr. G. H. MERCER
Mr. PETER CLARKE

PRIZES

FIRST PRIZE.—THE CHAMPION JOURNAL CHALLENGE CUP (subject to regulations) and a CASH PRIZE OF EIGHT POUNDS.

SECOND PRIZE.—A CASH PRIZE OF SEVEN POUNDS.

THIRD PRIZE.—A CASH PRIZE OF FIVE POUNDS.

FOURTH PRIZE.—A CASH PRIZE OF THREE POUNDS.

FIFTH PRIZE.—A CASH PRIZE OF TWO POUNDS.

SECTION 7. JUNIOR SHIELD "C" CONTEST

Test Piece—SUITE ... "IN OLD VIENNA" ... Schubert

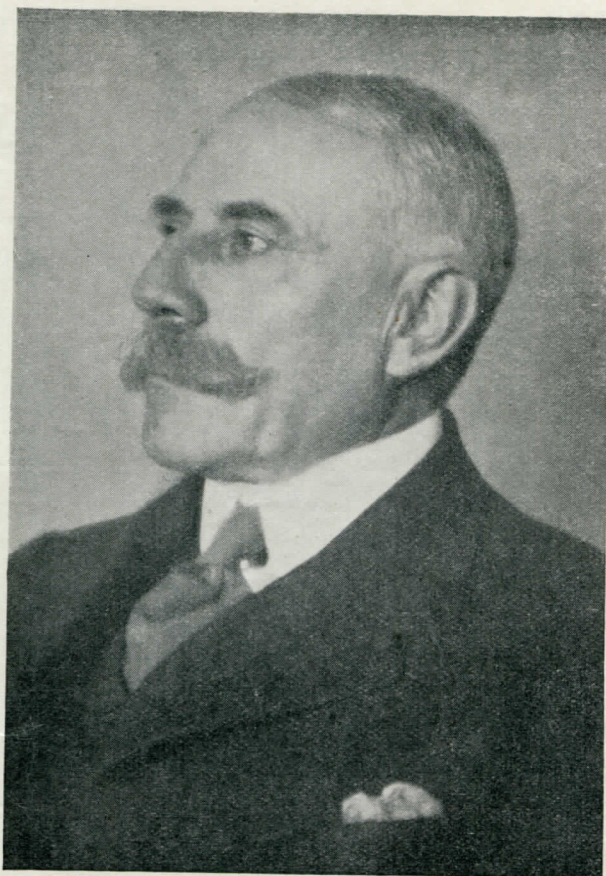
No.	Band	Conductor	Draw	Result
1.	Afon Valley	J. Radcliffe	8	
2.	Bethel	T. Hynes	29	
3.	Bloomsbury Institution	E. Henry	5	
4.	Boroughbridge B.L.	H. W. Hill	3	
5.	Boy's Brigade (66th London) Co.	H. A. Garrard	14	
6.	Braes of Allen	H. Fieldsend	17	
7.	Bromley	S. G. Craker	10	
8.	Brynmaur	S. Mounfield	30	
9.	Burslem Imperial	C. Hodkins	20	
10.	Burton Silver	H. A. Reynolds	16	
11.	Darnall W.M.C.	W. H. Hudson	22	
12.	Gillingham Imperial	T. S. Stokes	21	
13.	Glastonbury Town	G. Durston	7	
14.	Hexham Excelsior	J. G. Harding	13	
15.	Hurst Village	R. Cooper	11	
16.	Knottingley	S. Marshall	6	
17.	Langwith Colliery Institute	A. S. Grant	18	
18.	Maltby Main Ambulance	J. Alderson	2	
19.	North Skelton	W. Housam	19	
20.	Sheppey Boys	F. Dowell	15	
21.	Stamford Town	A. Lawton	7	
22.	Stourton Memorial	J. Newton	27	
23.	Thornton Heath	C. G. Hilliard	9	
24.	Tooting Central Hall	C. A. Sherriff	26	
25.	Towyn	R. O. Jones	24	
26.	West Chillington	C. M. Chatfield	12	
27.	West Hull Excelsior	S. Walmsley	35	
28.	Whittlesey King's Dyke	C. A. Anderson	38	
29.	Wokingham Town	B. David	23	
30.	Wroughton P.M.	W. Robinson	23	

Sir ARTHUR SULLIVAN

AND

Sir EDWARD ELGAR

To-day is the 25th anniversary of the National Band Festival, which was founded by the present Director, Mr. J. Henry Iles in 1900. The first Festival was held in July, 1900, when 29 bands only took part. Sir Arthur Sullivan attended the Festival and conducted these bands in the Massed Band Concert on the Handel Orchestra during the evening. He also edited the first Test Piece for the Championship Contest. This was a selection of his own popular works, and was, perhaps, the easiest task ever set before bands competing for the premier prize. Then followed a series of Test Pieces being mainly arrangements from the Great Masters' Grand Operas, the various movements being connected with cadenzas of great range and difficulty, mainly for Solo Cornet, Euphonium and



Sir EDWARD ELGAR

who has written a special work for
the Championship Contest.

Trombone. Such tests undoubtedly tried to the utmost these corner men of the bands, but so great was the progress of the bands as a whole that the Director felt test works should be produced that would give each individual member something important to do and scope for ensemble, brilliance and refinement.

From 1913 onwards original works by British Composers have been provided and many distinguished men have written these tests for the Festival. It is particularly appropriate that as the first piece was from our great Composer, Sir Arthur Sullivan, the original test composition to be played to-day is the work of our greatest Composer, Sir Edward Elgar. Its performance to-day will be followed with the keenest possible interest and enthusiasm, and there will be no one more pleased than Sir Edward with the abilities of our wonderful working men musicians, who in this branch of the Musical Art, lead the world.

6.30 p.m. ORGAN RECITAL by Mr. GATTY SELLARS

- | | | |
|---|-----------|-----------------|
| 1. Carnival Overture | - - - - - | - Gatty Sellars |
| 2. Allegretto in E flat | - - - - - | - Wolstenholme |
| 3. "At the Temple Gates" (First London Performance) | - - - - - | - Gatty Sellars |
| 4. March, "Pomp and Circumstance" (No. 4 in G) | - - - - - | - Elgar |

THE MASSED BANDS

CARLISLE ST. STEPHEN'S (Cumberland)	CRESWELL COLLIERY (Derbyshire)
WINGATES TEMPERANCE (Lancashire)	HARTON COLLIERY (Durham)
FODEN'S (Cheshire)	CRYSTAL PALACE (London)

Conductor - - - - - MR. J. HENRY ILES

PROGRAMME

- | | | |
|---------------------------------------|-----------|---------------------------------------|
| 1. (a) Fanfare | - - - - - | - - - - - |
| (b) The National Anthem | - - - - - | - - - - - |
| 2. Grand March | - - - - - | "Silver Trumpets" - - - - - Viviani |
| 3. March | - - - - - | "By Your Right" - - - - - Paul Andrew |
| 4. (a) Selection from Rossini's Works | - - - - - | - - - - - Arr. by A. Owen |
| (b) Cornet Solo | - - - - - | "The Warrior" - - - - - B. Windsor |

(Soloist: H. MORTIMER)

(FODEN'S BAND. Conductor: F. MORTIMER)

- | | | |
|------------------|-----------|---------------------------------------|
| 5. March from | - - - - - | "Concertstück" - - - - - Weber |
| 6. (a) Part Song | - - - - - | "Sweet and Low" - - - - - Barnby |
| (b) Hymn | - - - - - | "Abide with Me" - - - - - Monk |
| 7. (a) Tone Poem | - - - - - | "Victory" - - - - - Cyril Jenkins |
| (b) Entr'acte | - - - - - | "Bells at Eventide" - - - - - S. Cope |

(CARLISLE ST. STEPHEN'S BAND. Conductor: W. LOWES)

- | | | |
|--------------------------|-----------|------------------------------|
| 8. Bridal March | - - - - - | "Lohengrin" - - - - - Wagner |
| 9. (a) Oriental Rhapsody | - - - - - | - - - - - Bantock |
| (b) Turkish March | - - - - - | - - - - - Beethoven |

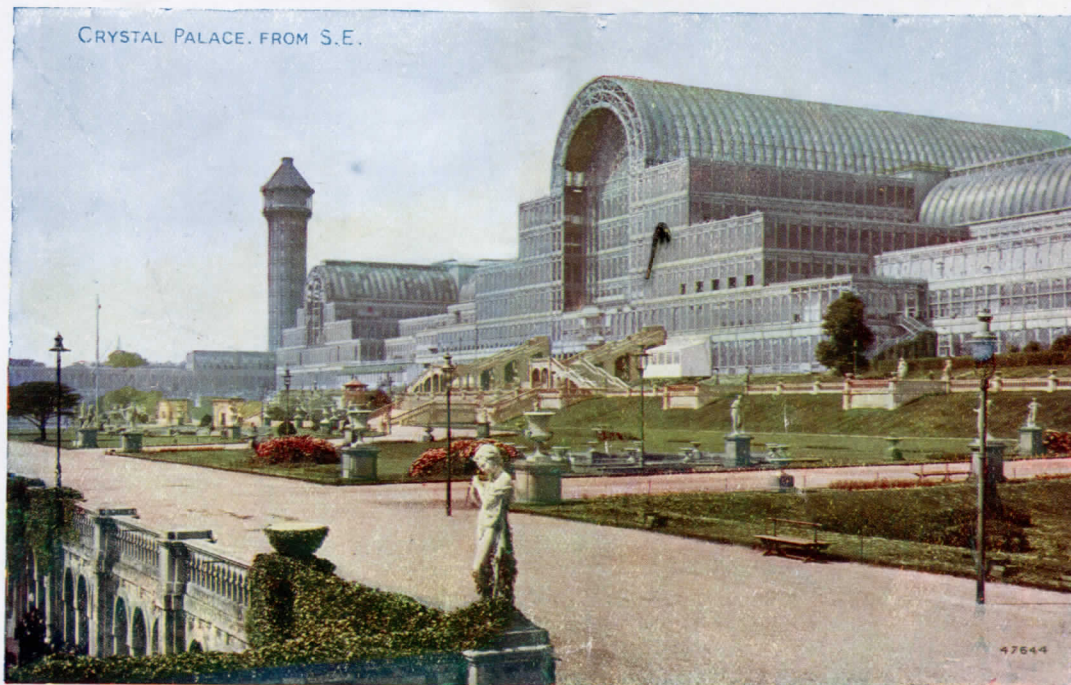
(WINGATES TEMPERANCE BAND. Conductor: H. MOSS)

- | | | |
|------------------------------|-----------|--------------------------------|
| 10. "Land of Hope and Glory" | - - - - - | - - - - - Elgar |
| 11. Selection | - - - - - | "Sea Songs" - - - - - National |

12. IMMEDIATELY AFTER the conclusion of the Concert, the Awards in the various Competitions held throughout the day will be shown on the screen. The numbers will correspond with those printed in the Official Programme.

Seats, Prices - - - 2/-, 3/-, 4/- and 5/- including tax.

**SEATS CAN BE BOOKED FROM 10 a.m. AT THE CRYSTAL PALACE BOX OFFICE
VISITORS ARE ADVISED TO BOOK EARLY**



FELDMAN'S

ELEVENTH GREEN BOOK

Containing Solo Cornet parts of the following sensational successes, is now on sale, price SIXPENCE

CONTENTS

		Brass Band (20)	Brass and Reed Band (30)	Extra Parts Each
		s. d.	s. d.	
* TIP TOE THRO' THE TULIPS	(Intermezzo Fox-Trot)	2 6	3 9	2d.
* PAINTING THE CLOUDS WITH SUNSHINE	(Intermezzo Fox-Trot)	2 6	3 9	2d.
THE BARMAID'S SONG	(Comedy Fox-Trot)	2 6	3 9	2d.
* MY SONG OF THE NILE	(Waltz)	2 6	3 9	2d.
* WATCHING MY DREAMS GO BY	(Fox-Trot)	2 6	3 9	2d.
WHEN YOU'RE SMILING	(Fox-Trot)	2 6	3 9	2d.
* LIKE A BREATH OF SPRINGTIME	(Waltz)	2 6	3 9	2d.
* LADY LUCK	(Fox-Trot)	2 6	3 9	2d.
* GO TO BED	(Waltz)	2 6	3 9	2d.
* I'VE NEVER SEEN A SMILE LIKE YOURS	(Fox-Trot)	2 6	3 9	2d.
* MY HEART IS BLUER THAN YOUR EYES (CHERIE)	(Waltz)	2 6	3 9	2d.
* SINGIN' IN THE BATHTUB	(Comedy Fox-Trot)	2 6	3 9	2d.
* SMILING IRISH EYES	(Cornet Solo)	2 6	3 9	2d.
* WHEN YOU'VE GONE... ..	(Cornet Solo)	2 6	3 9	2d.
* IF YOU WERE MINE	(Fox-Trot)	2 6	3 9	2d.
MYSTERIOUS MOSE	(Novelty Fox-Trot)	2 6	3 9	2d.
GOLD DIGGERS OF BROADWAY	(Selection)	6 0	9 0	4d.

From Warner Bros. and Vitaphone Sensational Singing and Talking Productions of the same Title.

* Theme Songs in Talking Films.

The above are only a few of our reigning successes. Send for complete lists.

ALL THE NUMBERS

IN FELDMAN'S 11th GREEN BOOK HAVE BEEN ISSUED TO SUBSCRIBERS TO OUR BRASS AND BRASS AND REED BAND JOURNAL, AND THERE ARE MANY MORE TO FOLLOW.

TERMS FOR 12 MONTHS' SUPPLY:

Brass Band of 20 Parts:

£1 : 5 : 0

Military Band of 30 Parts:

£2 : 2 : 0

Extra Parts to the Complete Journal, 1/- each.

Send your subscription now and keep right up to date.

B. FELDMAN & CO. 125/127/129, Shaftesbury Avenue, LONDON, W.C.2



HOMeward BOUND

BY CHAS. DIXON, R.I.

Continued from page 3]

This apart, to the music-lover the majestic swell of melody which makes "Heaven drowsy with the harmony," is inspiring and ennobling—a something which uplifts and takes him out of the mundane, far, far above the humdrum every day things. Music possesses the power to hush every thought that comes out of the bitterness of things, to soothe the hurts, to bring sweet peace to the troubled mind.

It is given to none other of the Arts to so readily fire the imagination. Even "excess" of music (if this be possible) would leave no aftermath of regret.

There is yet another aspect of the band contest that should not be overlooked. The instrumentalists are non-professional musicians; they mostly go about some utterly different business during the day. It is their *playtime* they spend with their beloved instruments—because they love to spend it thus. In other words, they have mastered technique, and many of them have become brilliant executants. They have assiduously trained to a marvellous pitch of efficiency—possibly with one eye on the magnificent trophy and the championship, but this one can readily forgive them. For pure love of music they have sacrificed much well-earned leisure for the greater, wider ideal—achievement, and they have their reward in the vivid interest shown by the many thousands of music-lovers who flock from all quarters to hear them.

Whether "music be the food of love" or not, "play on," we will gladly risk suffering from "excess" of it.



THIS GIFT!

is just one example of the splendid value offered in the Pascall Free Gift Scheme.

For further particulars and 5 FREE COUPONS, fill in and post the coupon below.

AMBROSIA

"Britain's Best Milk Chocolate"

POST THIS COUPON NOW!

PASCALL GIFT DEPT., BLACKFRIARS
Send me immediately full particulars of your FREE GIFT SCHEME, and 5 FREE COUPONS

Name

Address

LIST OF EXHIBITORS IN SOUTH NAVE

- BESSON & Co.,
196/8 Euston Road, N.W.
- BEEVERS,
26 Aldermanbury, London, E.C.
- MESSRS. BOOSEY & HAWKES, LTD.,
295 Regent Street, London, W.
- BOSWORTH & Co.,
8 Heddon Street, London, W.
- CAMPBELL, CONNELLY & Co.,
10 Denmark Street, London, W.C. 2.
- B. FELDMAN & Co.,
125/129 Shaftesbury Avenue, London, W.C.
- J. P. HULL,
39 Glebe Road, Bromley, Kent.
- KEITH PROWSE & Co., LTD.,
159 New Bond Street, London, W. 1.
- LAWBACK BROS.,
1 Hawley Road, Kentish Town, N.W. 1.
- LAWRENCE WRIGHT MUSIC Co., LTD.,
Denmark Street, Charing Cross, W.C. 2.
- W. PARTRIDGE & Co.,
175 Clapham Road, S.W. 9.
- A. M. PHILPOT,
354 Beech Hill, Luton, Beds.
- A. REYNOLDS,
138 Chester Road, Manchester.
- T. REYNOLDS, SENR. & SON,
43 Chapel Street, Salford, Manchester.
- RUDALL, CARTE & Co., LTD.,
23 Berners Street, London, W. 1.
- P. TOMPKINS & SON,
71 Palmerston Road, Northampton.
- UNIFORM CLOTHING & EQUIPMENT Co., LTD.,
10/11 Clerkenwell Green, E.C. 1.
- ARMY & NAVY STORES,
118 Praed Street, Paddington, W.



IN THE EGYPTIAN COURT, CRYSTAL PALACE

CRYSTAL PALACE

ENGLAND'S FINEST SPEEDWAY

THRILLING

DIRT TRACK RACING

Organised by London Motor Sports, Ltd.

SATURDAYS at 3.30

Admission 1/6 Children 6d.

Combined Tickets Admission and
Covered Stand 2/4

Continued from page 3.

An army of men daily continue the work of keeping the Palace up to date, and the enormous sums expended since the war on improvements to the fabric, are restoring the famous old building to a brightness that it has not enjoyed for half-a-century.

To those who are inclined therefore to regard the Crystal Palace as merely a link with early days, a visit is heartily commended as an enjoyable way of spending a few hours—where the truth of the Palace slogan—"Always something on"—is amply proved.

WITH their usual enterprise, the National Sunday League have arranged for the Band winning the Championship and Thousand Guinea Trophy to play on Sunday, September 28th, 1930, at the Finsbury Park Empire, and the Band will also broadcast on Sunday afternoon from the B.B.C. studios.

This Programme is a

Photochrom production

Photochrom specialize in all branches of photographic work and printed illustration.

ADVERTISING CALENDARS FOR ALL TRADES ARE SUPPLIED FROM SPECIAL DESIGNS FROM 100 UP

Photochrom Co., Ltd. and at
80 FLEET STREET GRAPHIC WORKS
LONDON, E.C. 4 TUNBRIDGE WELLS
KENT



Mr. J. HENRY ILES

Director and Founder, who has conducted the Massed Bands at every Festival since 1900

The National Band Festival to-day will be remembered as a noteworthy event in the lives of the Bandsmen of this country, and it is both fitting and remarkable that its celebration should constitute a world's record for the large number of bands taking part—over 200 having entered the various graded competitions.

It is certainly a wonderful tribute to the faith and confidence these Bands have in the honesty and integrity of the Director and Founder of this truly National Festival, and there can be no one more happy and proud than he in seeing the twenty-fifth Festival celebrated with such a vast assembly of enthusiasts coming, as they do, from every part of Great Britain. It is worthy of special note that such a result has been accomplished notwithstanding the severe depression in trade which is particularly bad in the districts from which so many of these bands come.

The programme of the Massed Bands is of a particularly bright and joyful character, well befitting the joyous and happy rejoicings of those taking part in this great anniversary. To save disappointment visitors should get their seats for the Massed Band Concert as early as possible during the day. They can be obtained from the various Kiosks and Booking Offices.

The Kennel Club's 68th Open Championship Show

OCTOBER 9th and 10th

THE PREMIER DOG SHOW OF THE
WORLD

Over 2,700 dogs of 78 different varieties

The Crystal Palace Grand International Show of Poultry, Pigeons and Rabbits

NOVEMBER 18th, 19th and 20th

THE WORLD'S CLASSIC SHOW

Over 12,000 Exhibits on view



LOOKING TOWARDS THE GRAND STAIRWAY, CRYSTAL PALACE

1931 "CHAMPION JOURNAL"

	<i>Band</i> 20 Parts		<i>Band</i> 20 Parts
Suite—"The Severn Suite" Op. 87 (Score 6/-)	7/6	Cornet Solo—"Angels ever Bright and Fair"	2/6
Rhapsody—"Oriental" (Conductor 1/-) ...	6/6	Euphonium Solo—"Ave Maria" ...	2/6
*Selection—"The Mastersingers" (Score 5/-)	6/6	*Entr'acte—"Bells at Eventide" ...	2/6
*March—"Festival" ...	6/6	Wedding March from "Lohengrin" ...	2/6
*Suite—"Concert" (Score 4/-) ...	5/6	Turkish March from "The Ruins of Athens"	2/6
*Suite—"In Old Vienna" (Score 4/-) ...	5/6	March from "Concertstück" ...	2/6
*Waltz—"Blue Danube" ...	5/6	March—"Brunswick" ...	2/6
*Trombone Solo—"Sound an Alarm" ...	5/6	March—"Silver Trumpets" ...	2/6
*Selection—"Runnymede" ...	5/6	March—"By your Right" ...	2/6
*Cornet Solo—"The Warrior" ...	5/6		

* Pieces marked with star have a conductor copy price 6d. each.

Price Complete (any 20 parts), £2. Extra parts, 2/6 each—or at above prices.

The four full scores are published at an inclusive price of 15/-
NEW JOURNAL MUSIC READY MONDAY, OCTOBER 6th.

R. SMITH & CO. LTD., 210 Strand, London, W.C. 2

ENGAGEMENTS HAVE NOW
BEEN COMPLETED FOR THE
CRYSTAL PALACE
GRAND CONTINENTAL
CIRCUS

COMMENCING

BOXING DAY, December 26th

The Programme will include
THE MOST POPULAR
CONTINENTAL ARTISTES

Many of whom will be appearing
in England for the first time

Cheap Day Return Tickets

to the

CRYSTAL PALACE

Every week-day, by ALL TRAINS after 9.30 a.m.

Sundays and Bank Holidays by all trains, as under:—

<i>From</i>	<i>Return Fare</i>	<i>From</i>	<i>Return Fare</i>	<i>From</i>	<i>Return Fare</i>
LONDON BRIDGE		Croydon (S.) ...	-7	Richmond ...	1/4
VICTORIA		Denmark Hill ...	-8	St. Margaret's ...	1/6
HOLBORN VIADUCT	1/-	Earlsfield ...	1/-	Selhurst ...	-5
ST. PAUL'S		Elephant and Castle ...	1/-	Shepperton ...	2/8
WATERLOO	... 1/1	Epsom 1/4	South Bermondsey ...	-11
Ashted 1/7	Ewell East 1/3	Streatham ...	-6
Balham -6	Guildford 3/6	.. Common ...	-7
Banstead 1/4	Hampton Court 2/3	.. Hill ...	-5
Barnes 1/2	Herne Hill -6	Surbiton ...	1/10
Barnes Bridge 1/3	Hounslow 1/7	Sutton ...	1/-
Beckenham Junction ...	-5	Isleworth 1/5	Teddington ...	1/9
Belmont 1/1	Kingston 1/9	Tadworth ...	1/9
Bickley -10	Leatherhead 1/10	Thames Ditton ...	2/1
Birkbeck -3	Malden 1/6	Thornton Heath ...	-6
Box Hill 2/3	Mortlake 1/4	Tooting Junction ...	-9
Brentford 1/4	Norbiton 1/9	Tulse Hill ...	-4
Brixton -7	Norbury -7	Twickenham ...	1/6
Brockley -5	Norwood Junction -3	Vauxhall ...	1/-
Bromley South -8	Nunhead -6	Wallington ...	-9
Carshalton -11	Orpington 1/3	Wandsworth Common ...	-8
Caterham 1/5	Peckham Rye -8	Wandsworth Town ...	-11
Clapham Junction -9	Purley -10	West Norwood ...	-3
Croydon (E. and W.)	-5	Putney 1/-	Wimbledon ...	-11
		Raynes Park 1/5	Worcester Park ...	1/8

and numerous other S.R. Suburban Stations. Bookings also to Penge East and Penge West.

Quickest Way Home!

CHEAP SINGLE TICKETS TO LONDON

(Victoria, London Bridge & Holborn Viaduct)

Available at intermediate stations



Electric Trains to and from the Crystal Palace every few minutes

Save Time and Money by Travelling

SOUTHERN ELECTRIC