

THE 26TH ANNUAL BAND CONTEST



BEING THE 31ST. ANNIVERSARY OF THE
GREAT NATIONAL BAND FESTIVAL
Programme & Souvenir of the Crystal Palace



OFFICIAL PUBLISHERS THE PHOTOCHROM CO LTD LONDON AND TUNBRIDGE WELLS. EXCLUSIVE COPYRIGHT

BIGGEST ENTRY ON RECORD

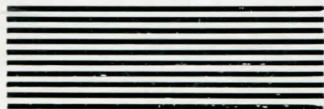
**LOOK FOR THE WINNERS
IN THE
CRYSTAL PALACE
BAND CONTEST
ON**

The Famous

**REGAL
RECORDS**

NOW

1/6



The Championship Test Piece :

“HONOUR & GLORY” (*Hubert Bath*)
will be issued

FIRST on REGAL Records

Order it to-day!

PREVIOUS PRIZE WINNERS ON REGAL RECORDS :

- 1930.—“SEVERN SUITE”
1st Prize Winners—FODEN'S MOTOR WORKS BAND
- 1929.—“VICTORY”
1st Prize Winners—CARLISLE (ST. STEPHEN'S) BAND
- 1928.—“A MOORSIDE SUITE”
2nd Prize Winners—HARTON COLLIERY BAND
- 1927.—“THE WHITE RIDER”
1st Prize Winners—CARLISLE (ST. STEPHEN'S) BAND
- 1926.—“AN EPIC SYMPHONY”
1st Prize Winners—ST. HILDA COLLIERY BAND
- 1925.—Overture, “JOAN OF ARC”
1st Prize Winners—MARSDEN COLLIERY BAND
- 1924.—Rhapsody, “ON THE CORNISH COAST”
1st Prize Winners—ST. HILDA COLLIERY BAND
3rd Prize Winners—NEWCASTLE (N.S.W.) WORKS BAND
- 1923.—Overture, “OLIVER CROMWELL”
1st, 2nd and 3rd Prize Winning Bands

All of Them on REGAL

**REGAL—
ALWAYS
REGAL
1/6**



CRYSTAL PALACE

SIR HENRY BUCKLAND - - - General Manager

THE
**31st Anniversary of
the Great National
BAND FESTIVAL**

(Being the Twenty-Sixth Band Contest)

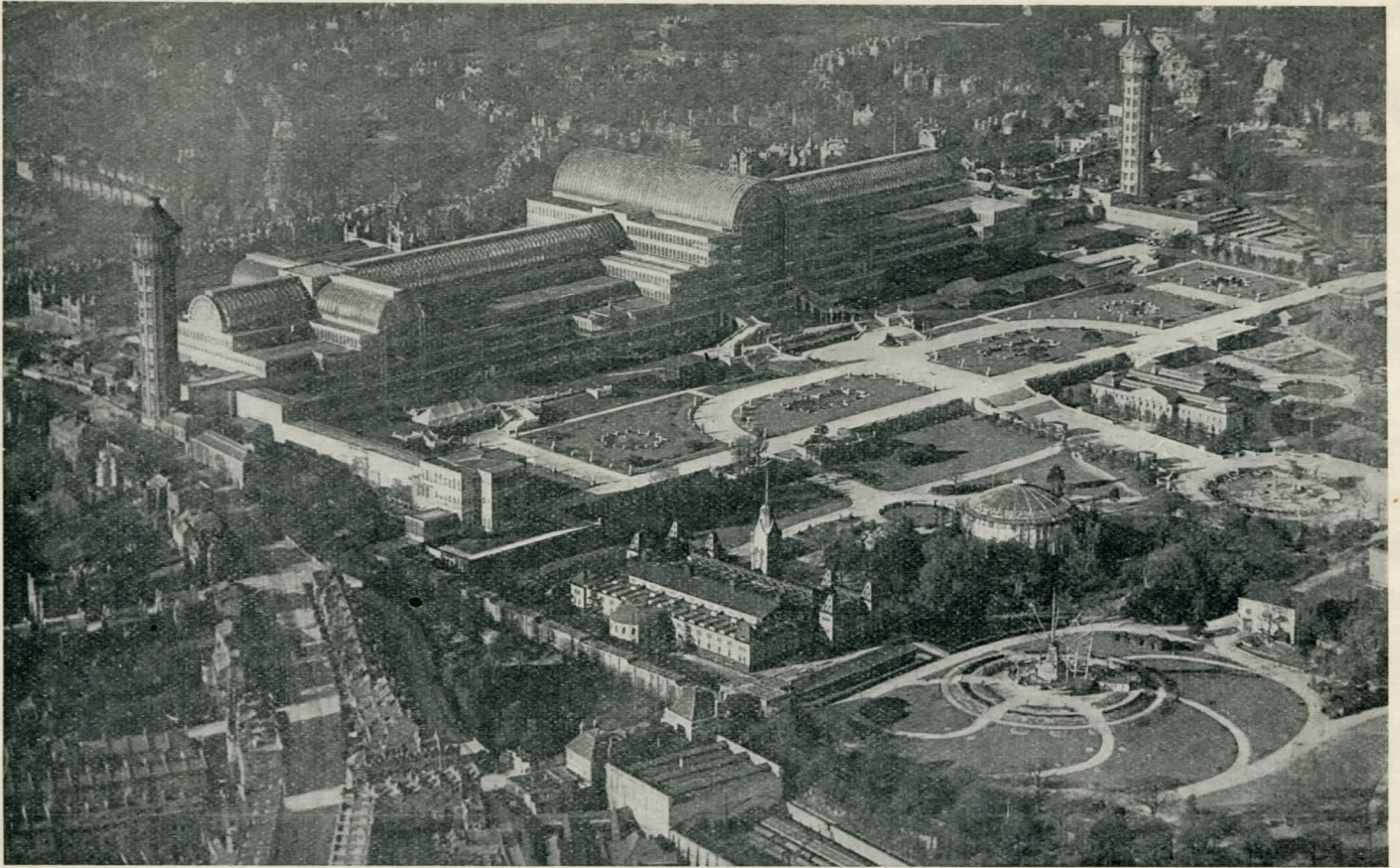
SEPTEMBER 26th

1 9 3 1

Under the Gracious Patronage of
HIS MAJESTY THE KING

Director and Founder - - - **Mr. J. HENRY ILES**
(Officier d'Academie Francaise)

COPYRIGHT PUBLICATION
BY THE
PHOTOCHROM CO., LTD.
80 FLEET STREET, LONDON, E.C. 4



AERIAL VIEW OF CRYSTAL PALACE

*Ask any Band Conductor or Bandsman
the following questions:—*

WHAT is the name which is always spoken by Brass Wind musicians with ungrudging admiration ?

WHAT is the model copied by foreign instrument makers and used by Dealers to boost their wares ?

WHAT British make predominates in the instrumentation of Bands all over the world ?

WHAT Trade Mark is generally recognised as representing Perfection in Wind Musical Instruments ?

The answers must be — **BESSON!**

BESSON & Co. Ltd., 196-198 Euston Road, London, N.W.1

The Great National Band Festival

THE NATIONAL BAND FESTIVAL
WAS FOUNDED IN 1900 BY MR J. HENRY ILES

It is a remarkable testimony to the popularity and attractiveness of the National Band Festival that a year of great distress in industry should mark a record attendance of Brass Bands for this, the Twenty-sixth Series of Contests, being the Thirty-first Anniversary of the Great National Band Festival.

It is estimated that the cost to each band attending the Festival amounts to sums ranging anything from £50 to £100.

Large sums are spent in tuition fees, professional teachers being engaged to put the band through the test piece, and polishing up the many different phases such tests provide. Timing, phrasing, execution and general ensemble all play an important part in gaining marks from the Judges, and many bands have lost the prize in failing on one or more of these important features.

The Judges are not allowed to know the names of the bands, and are enclosed from view of both bands and the public. They are well placed for hearing the various performances, and award their marks to the bands in the order in which they play.

No one, including the Director, is allowed to learn of the Judges' decisions until they are announced immediately after the concert of Massed Bands. The Judges write out their awards, seal them, and place the envelope in the hands of the policeman on guard in their enclosure, and these envelopes never leave the custody of the police until broken by the Director and announced by him in the presence of the great audience of 25,000 to 30,000 people.

Here is a list of the Championship winning Bands from 1900 to 1912:—

1900. DENTON ORIGINAL (Lancashire)	1907. WINGATE'S TEMPERANCE (Lancashire)
1901. LEE MOUNT (Yorkshire)	1908. IRWELL SPRINGS (Lancashire)
1902. BLACK DYKE MILLS (Yorkshire)	1909. SHAW (Lancashire)
1903. BESSES O' TH' BARN (Lancashire)	1910. FODEN'S MOTOR WORKS (Cheshire)
1904. HEBBURN COLLIERY (Durham)	1911. CROSFIELD'S SOAP WORKS (Lancashire)
1905. IRWELL SPRINGS (Lancashire)	1912. ST. HILDA (Durham)
1906. WINGATE'S TEMPERANCE (Lancashire)	

It was at the 1913 Festival that an original piece of music for the Championship Test Piece was first introduced for Brass Band Contests. The names of the pieces and their composers, together with the winning bands and judges, are here set out in datal order:—

Winning Band	Test Piece	Composer	Judges
1913. IRWELL SPRINGS	... "Labour and Love" Percy E. Fletcher ...	P. E. Fletcher Lt. Bilton
1920. ST. HILDA	... "Coriolanus" Cyril Jenkins ...	J. Ord Hume C. Jenkins W. Reynolds T. Eastwood
1921. ST. HILDA	... "Life Divine" Cyril Jenkins ...	C. Jenkins H. Bath J. Carter
1922. HORWICH R.M.I.	... "Freedom" Hubert Bath ...	H. Bath Lt. Bilton Lt. Hoby
1923. LUTON RED CROSS	... "Oliver Cromwell" H. Geehl ...	H. Geehl Lt. Bilton H. Brian
1924. ST. HILDA	... "On the Cornish Coast" H. Geehl ...	H. Geehl J. H. Carter

Continued on Page 18

With their usual enterprise, the National Sunday League have arranged for the Band winning the Championship and Thousand Guinea Trophy to play on Sunday, September 27th, 1931, at the Finsbury Park Empire.

THE GREAT NATIONAL BAND FESTIVAL

is the "Mecca" of all Brass Instrument
Players, so it should be the desire of

ALL PLAYERS

to obtain the best instruments that
ARE MADE

The Instruments by **RUDALL, CARTE & CO.**
are the acme of perfection for only Skilled Craftsmen who
are able to make instruments from start to finish, are employed.

NO MASS PRODUCTION

PRICES NO HIGHER

.....
SEE STAND NO. 8
.....

RUDALL, CARTE & CO., LTD.
23 BERNERS STREET, OXFORD STREET, W.

(Near Middlesex Hospital)

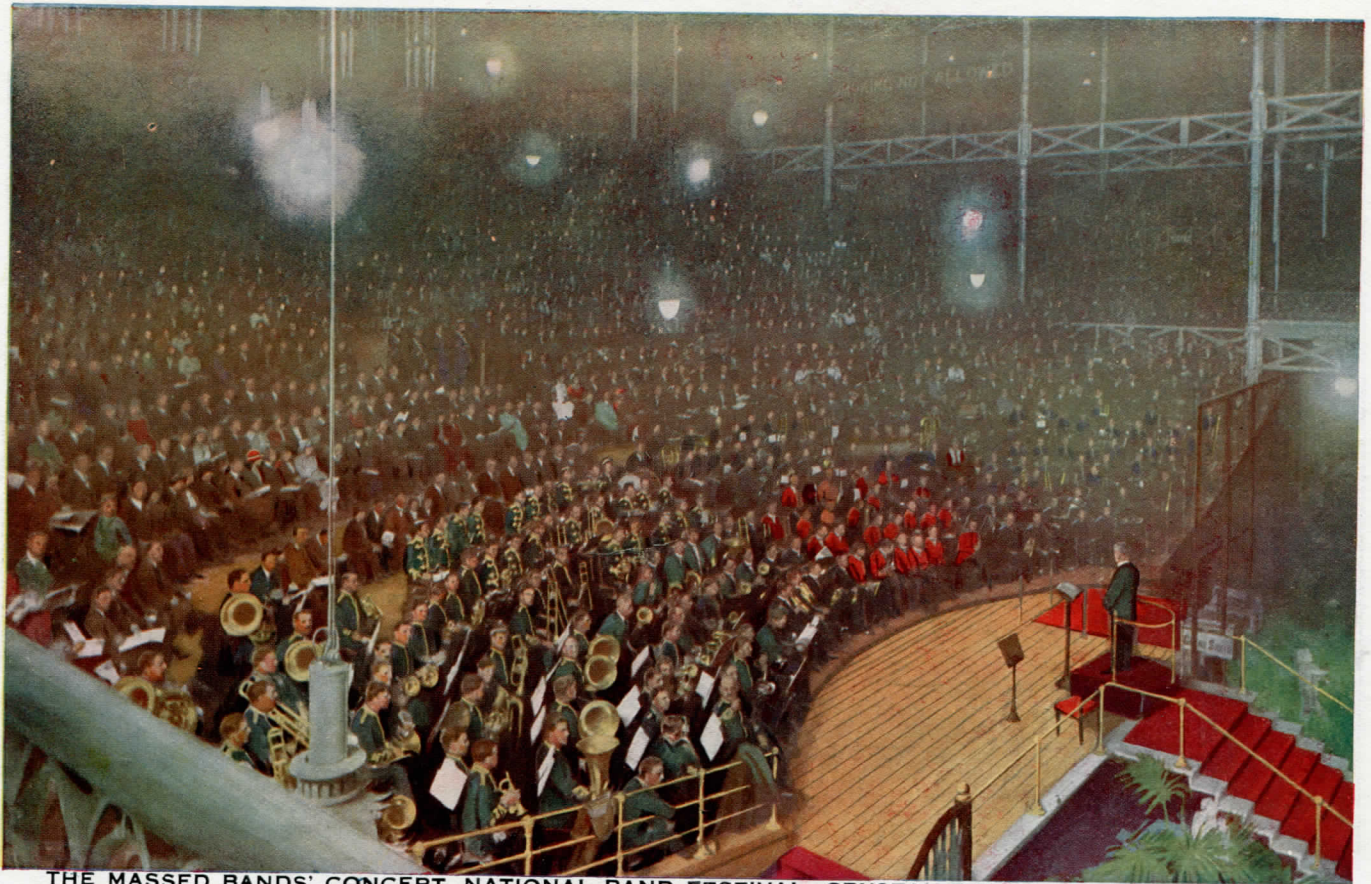
Established over a Century and a half.



100
101
102
103
104
105
106
107
108
109
110
111
112
113
114
115
116
117
118
119
120

Photochrom copyright

ROSES BY WINIFRED WALKER



THE MASSED BANDS' CONCERT, NATIONAL BAND FESTIVAL, CRYSTAL PALACE

Photochrom Copyright Exclusive

THE CHANGING OF THE GUARD

SOLO CORNET B \flat
(Conductor)

REGAL MARCH

FLOTSAM &
JETSAM

Arranged for Military and Brass Band by J. ORD HUME

Note:— Twice through from ♩ to ♩ , then back to beginning for Coda Sign, then Coda

♩ Tempo di Marcia

to ♩ Coda

f

mf

CHORUS

There you'll see the Changing of the Guard Stand, maybe, With-

p if you enter press your to the watch from Changing Guard, See how they

in the Palace yard, And plea to fail you noses rails, And there the of the come!

To beat of drum Atouch pride evry hand A sharp word of com-hold, Behold! The Changing Guard!

**GET YOUR SET AT BOSWORTH'S—STAND No. 12, SOUTH NAVE
OR DIRECT FROM THE PUBLISHERS**

THE PETER MAURICE MUSIC CO. LTD., Maurice House, Denmark Street, London, W.C. 2

TELEPHONE: TEMPLE BAR 3856 (5 LINES)

TELEGRAMS: "MAURITUNES, WESCENT, LONDON"



CRYSTAL PALACE. VIEW FROM TERRACE

The Mecca Cafes

CATERERS BY APPOINTMENT TO THE CRYSTAL PALACE

Head Offices, Stores, etc.: **76 SOUTHWARK STREET, S.E. 1**
LONDON:—CAFES AND RESTAURANTS

54 Gresham Street.
 Telegraph Street.
 101 Leadenhall Street.
 145 Cannon Street.
 Broad Street.
 14 Walbrook.
 49 London Wall.

50/51 Fore Street.
 31 Great St. Helens.
 75b Queen Victoria Street.
 3 Gresham Street.
 9/10 Mark Lane.
 23 Coleman Street.
 1 Whittington Avenue

69/70 Mark Lane.
 139 Cannon Street.
 King's Arms Yard.
 140 Cheapside.
 24 Lime Street.
 21 St. Mary Axe.
 15 Copthall Avenue.

68 Basinghall Street.
 56 Ludgate Hill.
 11a Queen Street.
 11/12 Blomfield Street.
 65/6 Chancery Lane
 143 Charing Cross Road.
 57 Gracechurch Street.

PROVINCES

BIRMINGHAM

The Station Street Cafe,
 Station Street.
 The Kings Cafe,
 Midland Arcade, New Street.
 The Mecca Cafe,
 Waterloo Street.
 The Cafe Royal,
 Prudential Buildings,
 Corporation Street.

HULL

The Mecca Cafe,
 Prudential Buildings,
 King Edward Street.

CAMBRIDGE

The Mecca Cafe,
 Petty Cury.

SHEFFIELD

The Haymarket Hotel,
 Haymarket.

LIVERPOOL

The Cotton Exchange Cafe
 Ormond Street.
 The Mecca Cafe,
 6 Drury Lane.
 The Exchange Cafe,
 Exchange Flags.
 The Mecca Cafe,
 Clayton Square.
BRIGHTON
 The Mecca Cafe,
 105 King's Road.

BRIDLINGTON

The Mecca Cafe,
 8/9 Garrison Street.

MANCHESTER

The Mecca Cafe, 37 Cross Street

ST. ALBANS

The Mecca Cafe, Market Place.

TUNBRIDGE WELLS

The Mecca Cafe,
 44/46 The Pantiles.

HOTELS. THE ROOF GARDEN HOTEL, John Bright Street, BIRMINGHAM. THE HAYMARKET HOTEL, King Street, SHEFFIELD.

SOLE CATERERS AT CRYSTAL PALACE, ROYAL OPERA HOUSE DANCES, (COVENT GARDEN), PALAIS DE DANSE (NOTTINGHAM), REGAL CINEMA, (NORWOOD), AND FORUM CINEMA, (FULHAM). Also CONTROLLING THE RITZ PALAIS DE DANSE, (MANCHESTER), THE LOCARNO DANCE HALL, (STREATHAM), AND SHERRY'S DANCE HALL, (BRIGHTON).

The Great Championship Contest

for the
CRYSTAL PALACE ONE THOUSAND GUINEA TROPHY

**LAST YEAR'S WINNER
FODEN'S**

12 noon—In the Concert Hall

Grand Championship Brass Band Contest for the Crystal Palace One Thousand Guinea Challenge Trophy and the "Daily Telegraph" Challenge Cup, and other Prizes

Adjudicators :—G. MERCER

C. WARD

Referee :—H. BATH

PRIZES

FIRST PRIZE.—The Championship of Great Britain and the Colonies, the winners of which will be the holders for the year (under special regulations) of the CRYSTAL PALACE NATIONAL CHALLENGE TROPHY, of the value of One Thousand Guineas, and a CASH PRIZE OF FIFTY POUNDS, and Messrs. BESSON & Co., LTD., 198 Euston Road, London, N.W. 1, sole manufacturers of the celebrated "Prototype" Band Instruments, will present one of their famous "New Standard" Tenor Slide Trombones, handsomely silver-plated and embellished, complete in attaché case, valued at TWENTY POUNDS (£20), and Messrs. WRIGHT & ROUND, 34 Erskine Street, Liverpool, will present one *Brass Band News* Gold Medal to the Resident Bandmaster, value FOUR GUINEAS, and Mr. Wm. SMITH, 246 The Grove, Hammersmith, London, W. 6, will present to the Member of the Winning Band having the longest unbroken record of service, one McMichael "Super-Range Four" Portable Radio Set, value TWENTY-TWO GUINEAS.

Each Member of the Band, including the Bandmaster and Secretary, will also be presented with the CRYSTAL PALACE CHAMPIONSHIP BRONZE MEDAL, with Bar and Clasp.

Members of the Band winning the Trophy for the second time will be presented with the same medal IN SOLID SILVER; and Members of the Band winning the Trophy for the third time will be presented with SOLID GOLD MEDALS.

SECOND PRIZE.—THE *DAILY TELEGRAPH* CHALLENGE CUP (subject to regulations), value Fifty Guineas, and a CASH PRIZE OF FORTY-FIVE POUNDS, and Messrs. BOOSEY & HAWKES, LTD., 295 Regent Street, London, W. 1, will present an Instrument, to be selected from their combined catalogue, to the value of TWENTY POUNDS (£20).

THIRD PRIZE.—A CASH PRIZE OF FORTY POUNDS, and THE UNIFORM CLOTHING & EQUIPMENT Co., LTD., 10/11 Clerkenwell Green, London, E.C. 1, will present one Set Band Books, printed in gold or silver lettering with the name of the Band and Instrumentation, value SEVENTEEN GUINEAS.

FOURTH PRIZE.—A CASH PRIZE OF THIRTY-FIVE POUNDS, and Messrs. B. FELDMAN & Co., 125 Shaftesbury Avenue, London, W.C., will present one Boosey Bb Cornet "N.V.A." Silbrum valves, triply silver-plated and engraved, value FIFTEEN GUINEAS.

FIFTH PRIZE.—A CASH PRIZE OF THIRTY POUNDS, and THE ARMY & NAVY SUPPLY STORES, 118/120 Praed Street, Paddington, London, W. 2, will present one Complete Uniform Outfit for a Bandmaster, including the Frockcoat, Trousers, Cap and Baton, to be selected to the Winning Band's design, to the total value of FIFTEEN GUINEAS.

SIXTH PRIZE.—A CASH PRIZE OF TEN POUNDS, and Messrs. RUDALL, CARTE & Co., LTD., 23 Berners Street, London, W. 1, will present one Plated Bb Cornet, with double water keys, value FIFTEEN GUINEAS.

1. CHAMPIONSHIP CONTEST

TEST PIECE: "HONOUR AND GLORY" - - -

Hubert Bath

SECTION 1

No.	Band	Conductor	Draw	Result	No.	Band	Conductor	Draw	Result
1.	Baxendale's Works	J. A. Greenwood	13.	Heworth Colliery	J. A. Greenwood
2.	Besses o' th' Barn	W. Halliwell	14.	Horden Colliery	J. Foster	2
3.	Black Dyke Mills	W. Halliwell	15.	Irwell Springs	W. Halliwell
4.	Brighouse and Rastrick	F. Berry	16.	Luton Red Cross	E. S. Carter
5.	Carlisle St. Stephen's	W. Lowes	17.	Metropolitan Works	H. Heyes
6.	Creswell Colliery	J. A. Greenwood	6	18.	Milnrow Public	J. A. Greenwood
7.	Crookhall Colliery	W. Richards	19.	Rothwell Temperance	N. Sidebottom	3
8.	Crystal Palace	W. Reynolds	20.	St. Dennis	C. H. Baker
9.	Eccles Borough	J. Dow	4	21.	Scottish C.W.S.	G. Hawkins
10.	Foden's Motor Works	F. Mortimer	5	22.	Sowerby Bridge	J. A. Greenwood
11.	Gwaun Cae Gurwen	T. J. Rees	23.	Wigston's Temperance	C. Moore
12.	Harton Colliery	W. Halliwell	24.	Wingate's Temperance	H. Moss	1

Admission to Concert Hall TWO SHILLINGS

NOTE.—The Director's Office is in front of the Concert Hall. At "THE BRITISH BANDSMAN" Stand, adjoining, can be obtained the Conductor's parts of the Test Pieces—Price One Shilling.

A MUSICAL EXHIBITION

By all the Leading Musical Instrument
Manufacturers, etc.

WILL BE HELD IN THE SOUTH NAVE

See List of Exhibitors, Page 19

The Head Quarters of the National Brass Band Club will be in the Crystal Palace Club room and will be available for members and friends. Mr. J. H. Kichenson, The Hon. Secretary, will be pleased to welcome them.

Be sure to call at the

CHAPPELL MUSIC STALL

(In the Centre Transept)

where you will find all

**THE LATEST NOVELTIES FOR
BRASS AND REED BANDS.
NEW SELECTIONS, FOX-TROTS,
:: CORNET SOLOS, ETC. ::**

||| SPECIAL OFFERS FOR THE DAY ONLY |||

“IN OLD THIBET” *By Gatty Sellars*

Oriental Tone Picture

PERFORMED THIS DAY BY THE COMPOSER
ON THE CRYSTAL PALACE GREAT ORGAN

New Solo Cornet Books—Wonderful Value

FAMOUS SOLOS FOR CORNET (with Piano Accomp.)

“YOU ARE MY HEART’S DELIGHT”

“SONG OF SONGS”

**CHAPPELL & Co., Ltd., BAND MUSIC DEPT.
50 NEW BOND STREET, LONDON, W. 1**

11.30 a.m.—In the Theatre

Brass Band Contest for the "Daily Express" Challenge Shield and "The People" Challenge Shield and other Prizes

Adjudicators:—J. BRIER
H. BARLOW (by kind permission of the B.B.C.)

PRIZES

- FIRST PRIZE.**—THE *DAILY EXPRESS* CHALLENGE SHIELD (subject to regulations) value Fifty Guineas, and a CASH PRIZE OF TWENTY POUNDS, and Messrs. LAWRENCE WRIGHT Music Co., Denmark Street, Charing Cross Road, London, W.C.2, will present one silver-plated "Clipperton" Cornet, value FIFTEEN GUINEAS, and Messrs. WRIGHT AND ROUND, 34 Erskine Street, Liverpool, will present one *Brass Band News* Gold Medal to the Resident Bandmaster, value FOUR GUINEAS.
- SECOND PRIZE.**—THE *PEOPLE* CHALLENGE SHIELD (subject to regulations), and a CASH PRIZE OF FIFTEEN POUNDS, and Messrs. CHAPPELL & Co., LTD., 50 New Bond Street, London, W. 1, will present one triply silver-plated and engraved "Silbron" Bb Cornet (New Valve Action Model), with necessary fittings, guaranteed fifteen years, made by Messrs. Boosey & Hawkes, Ltd., valued at FIFTEEN GUINEAS.
- THIRD PRIZE.**—A CASH PRIZE OF TWELVE POUNDS, and Messrs. BEEVERS, 26 Aldermanbury, London, E.C.2, will present one Bandmaster's Frock Coat Suit and Cap, or one Set of Band Caps, according to choice of winning Band, to the value of TWELVE GUINEAS.
- FOURTH PRIZE.**—A CASH PRIZE OF TEN POUNDS, and Messrs. BOOSEY & HAWKES, LTD., 295 Regent Street, London, W. 1, will present a handsome Bandmaster's Frock Coat Suit, in Military Lappet style, with gilt embroidered peak and gold band, complete with pair of white kid gloves. Measured and fitted to individual requirements, as supplied to some of the Indian Bands, value TEN GUINEAS.
- FIFTH PRIZE.**—A CASH PRIZE OF EIGHT POUNDS, and Messrs. KEITH PROWSE & Co., LTD., 159 New Bond Street, London, W. 1, will present one contesting model Cornet, triple silver-plated, complete in brown leather case, value TEN GUINEAS.

SECTION 2. GRAND SHIELD CONTEST

(Last Year's Winner: HORDEN COLLIERY)

Test Piece	No.	Band	Conductor	Draw	Result
"Savern Suite"	1.	Barnoldswick Public	W. Halliwell	19	
	2.	Bradford City	H. Grace	5	3
	3.	Cambridge Railway	D. Wright	2	3
	4.	Colne Borough	E. Gregory	6	
	5.	Dunlop Works	F. Mortimer	5	
	6.	Edmonton	W. Tyrrell	1	
	7.	Emlyn Collieries	D. Williams	6	
	8.	Hanwell	J. C. Dyson	16	
	9.	Hickleton Main	T. Hunter	14	
	10.	Middlesbrough Boro'	J. Wilson	18	7
	11.	Morris Motors	S. V. Wood	10	
	12.	Pleasley Colliery	H. Lambert	13	
	13.	Raunds Temperance	D. Wright	12	
	14.	Ripley United	W. J. Saint	17	4
	15.	Rushden Town	M. J. Roberts	8	
	16.	Seven Sisters	D. W. Morgan	4	
	17.	Skipton	W. Halliwell	15	
	18.	Wallsend United	J. Boddice	3	
	19.	Willesden Town	C. McManus	10	

11.30 a.m.—In the North Tower Gardens (weather permitting) otherwise in the Sandow School

Brass Band Contest for the "Daily Sketch" Challenge Cup and "The News and Chronicle" Trophy and other Prizes

Adjudicators:—H. BENNETT
T. EASTWOOD

PRIZES

- FIRST PRIZE.**—The *DAILY SKETCH* CHALLENGE CUP (subject to regulations), value Fifty Guineas, and a CASH PRIZE OF FIFTEEN POUNDS, and Messrs. CAMPBELL, CONNELLY & Co., LTD., 10/11 Denmark Street, Charing Cross Road, W.C. 2, will present one Cornet, silver-plated and especially engraved, in cowhide attaché-shaped case, value TEN GUINEAS.
- SECOND PRIZE.**—THE *NEWS AND CHRONICLE* TROPHY (subject to regulations), and a CASH PRIZE OF TEN POUNDS, and Messrs. A. M. PHILPOT, of 354 Beech Hill, Luton, Beds., will do repairs and silver-plating to the value of SEVEN POUNDS TEN SHILLINGS.
- THIRD PRIZE.**—A CASH PRIZE OF EIGHT POUNDS, and Messrs. F. TOMPKINS & Co., 71 Palmerston Road, Northampton, will present one F. Tompkins Bb Cornet (Class "A"), value SEVEN GUINEAS.
- FOURTH PRIZE.**—A CASH PRIZE OF SEVEN POUNDS, and Messrs. LAWBACK BROS., 1 Hawley Road, Kentish Town, London, N.W. 1, will present one Lawback Class "A" silver-plated Cornet, engraved and in case, value SEVEN GUINEAS.
- FIFTH PRIZE.**—A CASH PRIZE OF FIVE POUNDS, and J. P. HULL, Esq., 39 Glebe Road, Bromley, Kent, will present one Cornet and Case, valued at FIVE GUINEAS.

SECTION 3. JUNIOR CUP "A" CONTEST

(Last Year's Winner: RIPLEY UNITED)

Test Piece	No.	Band	Conductor	Draw	Result
"Gems of Melody"	1.	Blyth L.N.E.R.	G. J. C. Ritchie	8	2
	2.	Cambridge Town	E. S. Carter	20	
	3.	Coventry	C. Shephard	3	
	4.	Craghead Colliery	J. Smith	3	5
	5.	Croydon Borough	E. W. Miles	19	
	6.	Earls Barton Old	W. Groome	12	
	7.	Falmouth Town	T. J. Chainey	7	
	8.	Great Central and Metropolitan	W. Smith	10	
	9.	Headington	A. F. Brooks	25	
	10.	Lewisham Borough	W. J. Stevens	29	3
	11.	Lowerhouse Mills	G. Altham	16	
	12.	Manvers Main	A. Yates	11	
	13.	Meltingriffith V. & C.C.	T. J. Powell	18	
	14.	Meltham Mills	W. Wood	27	
	15.	Milnsbridge Socialist	F. Braithwaite	22	
	16.	Morrison Collieries	W. L. Turnbull	9	
	17.	Radstock	T. Valentine	8	
	18.	Rugby Town	S. J. Bedford	21	1
	19.	Rushden Temperance	T. Young	13	
	20.	St. Pancras	F. Dimmock	30	
	21.	Shipley Collieries	J. Whitehead	17	
	22.	Thornley Colliery	E. Kitto	3	
	23.	Tilbury Town	G. T. Nicholls	16	
	24.	Troedyrhiw	J. Williams	4	
	25.	Urpeth Collieries	J. Boddice	23	
	26.	Wattford	R. Hutchinson	14	
	27.	Wolverton Town	A. F. Brooks	14	
	28.	Wood Green Excelsior	W. L. Dolling	24	
	29.	Workington Town	J. J. Fisher	26	4
	30.	Yiewsley and West Drayton	A. W. Allen	22	

11.30 a.m.—In the Dance Hall

Brass Band Contest for the "Daily Mirror" Challenge Cup, the "Pearson's Weekly" Challenge Shield and other Prizes

Adjudicators:—F. OWEN
H. HIND

PRIZES

- FIRST PRIZE.**—THE *DAILY MIRROR* CHALLENGE CUP (subject to regulations), value Fifty Guineas, and a CASH PRIZE OF FIFTEEN POUNDS, and Messrs. BOSWORTH & Co., LTD., 8 Heddon Street, Regent Street, London, W. 1, will present one Set of Tubular Bells, valued at FIVE GUINEAS.
- SECOND PRIZE.**—THE *PEARSON'S WEEKLY* CHALLENGE SHIELD (subject to regulations), value Fifty Guineas, and a CASH PRIZE OF TEN POUNDS, and Messrs. T. REYNOLDS, SENR. & SONS, 43 Chapel Street, Salford, Manchester, will do repairs and silver-plating to the value of FOUR GUINEAS.
- THIRD PRIZE.**—A CASH PRIZE OF SEVEN POUNDS, and Messrs. JOSHUA DUCKWORTH, LTD., Manifold Printing Works, Colne, Lancashire, will present Music Books, to be selected, to the value of THREE GUINEAS.
- FOURTH PRIZE.**—A CASH PRIZE OF FIVE POUNDS.
- FIFTH PRIZE.**—A CASH PRIZE OF THREE POUNDS.

SECTION 4. JUNIOR CUP "B" CONTEST

(Last Year's Winner: RUGBY TOWNS)

Test Piece	No.	Band	Conductor	Draw	Result
"Gems of Melody"	1.	Arsenal Football Club	J. H. Kitchenside		
	2.	Aylesbury Printing Works	W. Smith		
	3.	Barnet Town	F. Dimmock		
	4.	Brixton & Clapham	R. A. Leedham		
	5.	Cardiff City Tramways	E. Jones		
	6.	Cawston and District	C. Moore		
	7.	Chislet Colliery	J. Hamblin		
	8.	Clayton	F. Berry		2
	9.	Coxlodge Institute	G. J. C. Ritchie		3
	10.	Easington Colliery	E. Smith		
	11.	Friary Brewery	J. C. Dyson		
	12.	Glasgow St. Francis	W. T. Anderson		
	13.	Horsham Borough	W. Smith		
	14.	Lambeth Borough	G. Daley		5
	15.	Lycett Mission	F. Dimmock		4
	16.	Lydney Town	R. A. Hodges		
	17.	Newsome's Works	W. J. Warburton		
	18.	Northfleet	F. Dimmock		
	19.	Rhyl	T. Morris		
	20.	Ripon City	H. W. Hill		
	21.	Rowntree's Cocoa Works	H. Lambeth		
	22.	Sheffield Corporation Tramways	W. Halliwell		1
	23.	Shirebrook	J. Levick		
	24.	Soham Comrades	F. J. Talbot		
	25.	Stourton Memorial	G. Newton		
	26.	Swadlineote Town	A. Hilton		
	27.	Thorne Colliery	P. Stapleton		
	28.	Windsor	T. Dooley		
	29.	Ystalyfera Public	T. E. Jones		

Visitors are strongly recommended to get their tickets for the Massed Bands during the day to avoid the rush and frequent disappointment which is likely to arise through leaving it too late.

MEET THE WORLD-FAMOUS COMPOSER
HORATIO NICHOLLS

At the **LAWRENCE WRIGHT STALL**

AND GET HIS GIGANTIC HIT



**“WHEN THE GUARDS
ARE ON PARADE”**

AND 23 OTHER BIG HITS IN THE

WRIGHT SOLO CORNET BOOK, No. 8

JUST PUBLISHED. PRICE 6d.

Phones :
TEMPLE BAR 2141
(5 lines)

THE LAWRENCE WRIGHT MUSIC CO.,
19 Denmark Street, Charing Cross Road, London, W.C. 1

Telegrams :
VOCABLE,
WESTCENT
LONDON

**MAKING
UNIFORMS**

**OUR WHOLE BUSINESS
NOT A DEPT.**

**THE OLDEST
ORIGINAL FIRM**

Contractors to :

Wingates Temperance
Foden's Motor Works
Creswell Colliery Institute
Irwell Springs
Luton Red Cross
Eccles Borough
Baxendale's Works Silver Prize
Crystal Palace
Horwich R.M.I.
Crosfields Perfection Soap Works
Nelson Old Prize
Hanwell Silver Prize
Edmonton Silver Prize
St. Dennis Silver
Park & Dare
Workmen's Silver
Finedon Old
etc., etc.

EVANS' UNIFORMS



**DIRECT
FROM
MAKER
TO
WEARER**



PLACE YOUR ORDER WITH US

UNIFORM CLOTHING & EQUIPMENT Co., Ltd.
10, 11 CLERKENWELL GREEN, LONDON, E.C. 1
telephones: CLERKENWELL 6682 & 5226. Telegrams: "UNIQUP," LONDON

Also at

MANCHESTER
Phone: PENDLETON 2144

GLASGOW
Phone: CENTRAL 519

BELFAST
Phone: BELFAST 6872

CARDIFF and ST. DENNIS, CORNWALL

Northern Representative: Mr. J. CLARKSON, 47 Barrfield Road, Pendleton, Manchester

11.30 a.m.—In the Canadian Building

Brass Band Contest for the "Cassell's" Challenge Shield and other Prizes

Adjudicators:—A. YOULD
A. H. MUDDIMAN

PRIZES

- FIRST PRIZE.—THE CASSELL'S CHALLENGE SHIELD (subject to regulations), value Fifty Guineas, and a CASH PRIZE OF TEN POUNDS.
SECOND PRIZE.—A CASH PRIZE OF EIGHT POUNDS.
THIRD PRIZE.—A CASH PRIZE OF FIVE POUNDS.
FOURTH PRIZE.—A CASH PRIZE OF FOUR POUNDS.
FIFTH PRIZE.—A CASH PRIZE OF THREE POUNDS.

SECTION 5. JUNIOR SHIELD "A" CONTEST

(Last Year's Winners: SHIREBROOK)

Test Piece	Band	Conductor	Draw	Brahms Result
... "Lyric Suite"				
1. Berkhamsted Excelsior...	J. Hager...			
2. Black Dyke Mills Juniors	H. Hepworth			4
3. Burnley Temperance	J. S. Thomas			
4. Cheshire Lines Railway	F. V. Forman			
5. Ekington United	H. Barker			
6. Fakenham Town	S. White...			
7. Gainsboro' Britannia Ironworks	J. Scholfield			
8. Glastonbury Town	J. B. Yorke			
9. Glyn-Neath and District	A. Casey...			
10. Grangewood	W. Reynolds			
11. Hayes	A. T. Matson			
12. Hilton Colliery	H. Broster			
13. Hitchin Town	J. T. Cannon			
14. Ilford	E. H. Alder			
15. King's Heath Olde	J. E. Hewes			
16. Leek British Legion	H. Mortimer			3
17. Leiston Works A.A.	R. T. Peskitt			
18. Leyton Borough...	H. Rundle			
19. Longton Town	J. Cooper			1
20. Ogmere Valley Temperance	T. White			
21. Paulton	R. W. Kingman			
22. Redcar Works	T. C. Beeken			
23. Royston	F. Dimmock			
24. Ryhope Colliery...	T. Lemin			2
25. Sheppey Boys	F. Dowell			
26. Sheringham Temperance	F. Wallwork			
27. Wellingboro' L.M.S.	A. Remmington			
28. Wheatley Hill Colliery...	W. R. K. Straughan			5
29. Whyteleafe Village	P. Clarke			

11.30 a.m.—In the School of Art

Brass Band Contest for the "Iles" Challenge Shield and other Prizes

Adjudicators:—P. JONES
G. W. CAVE

PRIZES

- FIRST PRIZE.—THE ILES CHALLENGE SHIELD (subject to regulations), value Fifty Guineas, and a CASH PRIZE OF EIGHT POUNDS.
SECOND PRIZE.—A CASH PRIZE OF SEVEN POUNDS.
THIRD PRIZE.—A CASH PRIZE OF FIVE POUNDS.
FOURTH PRIZE.—A CASH PRIZE OF THREE POUNDS.
FIFTH PRIZE.—A CASH PRIZE OF TWO POUNDS.

SECTION 6. JUNIOR SHIELD "B" CONTEST

(Last Year's Winner: LLANSAINTEMPERANCE)

Test Piece	Band	Conductor	Draw	Brahms Result
... "Lyric Suite"				
1. Barton Town Subscription	M. Thompson			
2. Boscombe	C. J. C. Young			
3. Brynmawr	S. Mountfield			
4. Burslem Imperial	C. L. Hookman			
5. Canterbury City...	W. H. Smith			
6. Caterham...	F. Snow			
7. Chichester City	E. D. Shepherd			
8. Copthorne	F. Snelling			
9. Corris and District	G. Nicholls			1
10. Crewkerne	C. W. L. Pinney			
11. Erith Town	J. C. Dyson			6
12. Haywards Heath	W. G. Bosley			
13. Killamarsh	G. Burnham			
14. Manchester C.W.S. Tobacco Factory	J. A. Greenwood			1
15. Newport Pagnell Excelsior	A. Green			
16. North Evington W.M.C.	C. A. Anderson			
17. Northallerton Town	E. Thorpe			
18. North Middlesex	W. C. Belsham			
19. Redhill Town	R. H. C. Young			
20. South Kirby	C. H. Holland			
21. St. Ives Town	J. Tanner			2
22. Stamford Town	A. Barnes			
23. Stoke Newington B.L.	G. E. Turner			4
24. Swindon Great Western S. & E. Union	J. Lennon			3
25. Worcester "Studio"	C. F. Brown			
26. West Bromwich Borough	J. Perpin			

BEEVER'S UNIFORMS

The firm with 67 years' reputation for Value, Fit and complete satisfaction.

A few of the bands who wear Beever's uniforms

CARLISLE ST. STEPHEN'S World's Champions, 1927 & 1929 IRWELL SPRINGS BESSES O' TH' BARN HARTON COLLIERY PLEASLEY COLLIERY AMINGTON DOVE HOLES NUTGROVE CARLTON MAIN SOWERBY BRIDGE PENDLETON PUBLIC YORKSHIRE MILITARY DANNEMORA STEEL WORKS BOLSOVER COLLIERY BLACK DYKE MILLS JUNIOR CROYDON BOROUGH HEADINGTON SILVER ST. PANCRAS BARROW SHIPYARD	WILLEDEN TOWN BRIGHOUSE & RASTRIK EARL SHILTON YIEWSLEY & WEST DRAYTON RYHOPE COLLIERY BOARSHURST PRIZE OXLODGE INSTITUTE ROTHWELL TEMPERANCE METROPOLITAN WORKS, SALTLEY CARLTON BRITISH LEGION NOTTINGHAM BRITISH LEGION BLACKBURN BRITISH LEGION IPSWICH BRITISH LEGION MIRFIELD BAPTIST MILITARY RIPLEY UNITED LOWESTOFT RAILWAYMEN'S BIRSTALL OLD BLACKPOOL EXCELSIOR Etc., Etc.
---	--

Coloured List of Designs and Samples sent Free on Application
Representative sent to Measure Free of Charge

BEEVER'S

(JAMES BEEVER & CO)

26 ALDERMANBURY, LONDON, E.C.2

Phone: Metropolitan 3272. Telegrams: Beevonaire, Phone, London
And at Huddersfield

All Correspondence should be addressed to London
Established in 1864

SPECIAL NOTICE

For the convenience of visitors to the National Band Festival, arrangements have been made to keep the Post Office open until after the awards have been announced. This information is not available until after the conclusion of the Evening Concert, and those desirous of utilising the facilities referred to will be able to dispatch their communications from the Post Office adjoining the Main Entrance, either by telephone, telegram, or letter.

11.30 a.m.—In the Smoking Room

Brass Band Contest for the "Champion Journal" Challenge Cup and other Prizes.

Adjudicators:—J. EATON
J. H. WHITE

PRIZES

FIRST PRIZE.—THE CHAMPION JOURNAL CHALLENGE CUP (subject to regulations) and a CASH PRIZE OF EIGHT POUNDS.

SECOND PRIZE.—A CASH PRIZE OF SEVEN POUNDS.

THIRD PRIZE.—A CASH PRIZE OF FIVE POUNDS.

FOURTH PRIZE.—A CASH PRIZE OF THREE POUNDS.

FIFTH PRIZE.—A CASH PRIZE OF TWO POUNDS.

SECTION 7. JUNIOR SHIELD "C" CONTEST

(Last Year's Winner: WEST HULL EXCELSIOR)

Test Piece	Band	Conductor	Draw	J. Ord Hume Result
1. Amesbury Town	...	F. G. Fowler
2. Aveley	...	A. Bryant
3. Bloomsbury Institution Mission	...	I. Perrin
4. Bromley	...	S. J. G. Craker
5. Boroughbridge B.L.	...	H. W. Hill
6. Brotherton United W.M.C.	...	D. W. Livsey
7. Bucknall Ex-Servicemen's Inst.	...	W. Henshall
8. Burton	...	H. A. Reynolds
9. Chatteris Town	...	E. Furnell
10. Darnall W.M.C.	...	W. Hudson
11. Forest Row and District	...	O. H. Taylor
12. Hammersmith Borough	...	W. Smith
13. Hoo St., Werburgh	...	M. Simmons
14. Kingsbridge	...	W. G. Jerwood
15. King's Lynn Town	...	D. Aspinall
16. Knottingley	...	S. Marshall	...	5
17. Long Buckley Temperance	...	G. York
18. March Railway	...	A. S. Grant
19. Poolsbrook Wesleyan	...	E. Crich
20. Rushden Mission	...	F. Robinson	...	1
21. Settle	...	J. Patterson
22. Shirland and Higham	...	E. Brearley	...	2
23. Smallthorne Excelsior	...	G. F. Slater
24. Southbourne	...	C. R. Toogood
25. South Norwood (O.B.U.)	...	A. E. Neal
26. Tooting Central Hall	...	C. A. Sherriff
27. Wessex Junior	...	S. C. Brooks	...	3
28. West Chiltington	...	C. M. Chatfield
29. Whitchurch Town	...	H. Felton
30. Wilmslow Public Subscription	...	H. Hulme	...	4
31. Whittlesey King's Dyke	...	C. A. Anderson
32. Wokingham Town	...	L. Julien

POPULARITY OF THE BRASS BAND

THAT all previous records have been broken in the entry for this Festival of 1931, in an unprecedented period of national crisis, unemployment and a general tightening of the belts of the working classes, from which these Bands are formed, is in itself the most convincing proof of the popularity of the Brass Band movement, and provides a startling phenomenon for the uninitiated, who may be excused for drawing erroneous conclusions as to the real prosperity of the people. It is, however, only another proof of the adage "That man does not live by bread alone."

The continued success of this Festival, as also the popularity of the Brass Band, is founded on the strongest of psychological grounds. The Brass Band draws together a number of kindred souls to make concord of melodious sound; the National Festival attracts teams of these musicians in a spirit of emulation to an annual tribunal; and it should be remembered that this is the culminating event of a large number of similar contests held throughout the year all over the kingdom.

The Brass Band makes and maintains its strong appeal because it demands and develops the team spirit; its music is virile and active, and it affords a means for self-expression, comparable only to that of vocal music.

It is due to the spirit of emulation, created by these contests, that the standard of Brass Band playing is ever improving; the quality of the music written for the band is advancing in equal ratio, and the interest of the public has not waned. General appreciation of the amateur Band may be in a comparatively quiescent stage in the immediate distraction and novelty of the wonderful modern interpretations of music in all forms via the radio and gramophone, but in the wide, open spaces, on the march and in the open air, the people will always hasten to listen to the Band and be thrilled and uplifted by its music.

To-day, there are nearly 10,000 of these Bands in Great Britain; when prosperity returns, that number may be easily doubled, particularly when we learn the lesson already imbibed by other great countries and our Overseas Empire, of the tremendous value of Band Music in the schools. In America and in some of the State schools of Australia, the school Band each morning plays a spirited march whilst the rest of the children assemble and proceed to their class rooms. A good start is half the battle!

CHAS. E. TIMMS.

(Managing Director, Besson & Co., Ltd.)

"WEEKLY" ASSORTMENT



In Sealed Tins

6^{D.} 1/- 2/-

6.30 p.m. ORGAN RECITAL by Mr. GATTY SELLARS

1. Toccata (Suite Gothique) - - - - - *Boellmann*
2. "At the Temple Gates" - - - - - *Gatty Sellars*
3. "Carnival" (Finale, Suite de Ballet) - - - - - *H. J. Stewart*
4. Oriental Tone Picture - - "In Old Thibet" - - - - - *Gatty Sellars*
(First London Performance)

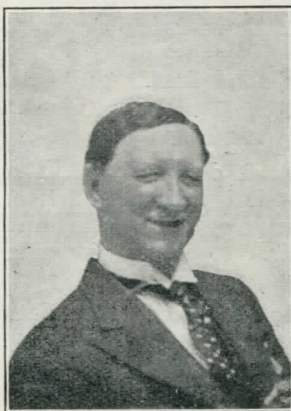
Caravans approaching, Devil Dance, Song of the Muleteer, Monk's Chant in Monastery of Lhasa.

7 p.m. THE MASSED BANDS

BLACK DYKE MILLS (Yorkshire)
 BESSES O' TH' BARN (Lancashire)
 CARLISLE ST. STEPHEN'S (Cumberland)
 CRYSTAL PALACE (London)

FODEN'S (Cheshire)
 IRWELL SPRINGS (Lancashire)
 LUTON (Bedfordshire)

Conductor - - - - - MR. J. HENRY ILES



MR. S. COPE
 Assistant Director to Mr. Iles



MR. J. HENRY ILES
 Officier D'Academie Francaise.
 Director & Founder of the National
 Band Festival.
 Mr. Iles has conducted the massed
 bands at every Festival from 1900

PROGRAMME

1. (a) Fanfare - - - - -
- (b) The National Anthem - - - - -
2. (a) March - - - - - "Invincible" - - - - - *S. Cope*
- (b) Hymn - - - - - "Deep Harmony" - - - - - *Handell Parker*
 One of the North's popular hymn tunes.
3. (a) - - - - - "Severn Suite" - - - - - *Sir Edward Elgar*

The Test Piece, specially written by Sir Edward Elgar for last year's Festival, on which Foden's won the Championship by an admittedly brilliant performance.



CRYSTAL PALACE. FROM LOWER TERRACE.

P 394

FELDMAN'S

TWELFTH GREEN BOOK

Containing Solo Cornet parts of the following sensational successes, is now on sale, price SIXPENCE

CONTENTS

	Brass Band (20)		Brass and Reed Band (30)		Extra Parts Each
	s.	d.	s.	d.	
I'M ALONE BECAUSE I LOVE YOU (Waltz)	2	6	3	9	2d.
RIVER, STAY 'WAY FROM MY DOOR (Fox-Trot)	2	6	3	9	2d.
WHEN IT'S SUNSET ON THE NILE (Waltz)	2	6	3	9	2d.
* I BRING A LOVE SONG (Morceau Elégant)	2	6	3	9	2d.
* YOU WILL REMEMBER VIENNA (Waltz)	2	6	3	9	2d.
OH! ROSALITA (Tango)	2	6	3	9	2d.
BLAZE AWAY (Vocal March and One Step)	2	6	3	9	2d.
HAWAIIAN STARS ARE GLEAMING (Tango or Slow Fox-Trot)	2	6	3	9	2d.
WAITING BY THE SILV'RY RIO GRANDE (Waltz)	2	6	3	9	2d.
MISS ELIZABETH BROWN (Fox-Trot)	2	6	3	9	2d.
KOPPA-KA-BANNA (March or Two-Step)	2	6	3	9	2d.
OH! DONNA CLARA (Intermezzo Tango)	2	6	3	9	2d.
* THE KISS WALTZ (Waltz)	2	6	3	9	2d.
DANCING WITH TEARS IN MY EYES (Valse Sentimento)	2	6	3	9	2d.
THE WEDDING OF THE THREE BLIND MICE (Novelty Dance)	2	6	3	9	2d.
COMMUNITYLAND, No. 2 (Selection)	6	0	9	0	4d.

(Containing Popular Song Successes of past years. Suitable for Community Singing). Played by every prominent band in Great Britain.

* Theme Songs in Talking Films.

The above are only a few of our reigning successes. Send for complete lists.

ALL THE NUMBERS

IN FELDMAN'S 12th GREEN BOOK HAVE BEEN ISSUED TO SUBSCRIBERS TO OUR BRASS AND BRASS AND REED BAND JOURNAL, AND THERE ARE MANY MORE TO FOLLOW.

TERMS FOR 12 MONTHS' SUPPLY

Brass Band of 20 Parts:

£1 : 5 : 0

Military Band of 30 Parts

£2 : 2 : 0

Extra Parts to the Complete Journal, 1/- each.

Send your subscription now and keep right up to date.

B. FELDMAN & CO. 125/127/129, Shaftesbury Avenue, LONDON, W.C.2



Photochrom copyright

CHRYSANTHEMUMS BY WINIFRED WALKER

(b) Cornet Solo - - - "Romanza and Warblings at Eve" - - - G. Hawkins

(Soloist : H. MORTIMER)

H. Mortimer is the son of the Conductor and a brilliant Cornetist. This Solo gives him every scope to display his art.

(FODEN'S BAND. Conductor : F. MORTIMER)

4. Fantasia Triumphale - - - "Pro Patria" - - - Charles L. Naylor

This Fantasia has been written specially for the Massed Bands. It is a fine piece of work, and its first performance to-night should be very impressive.

5. (a) - - - "Moorside Suite" - - - Gustav Holst

Specially written for the 1928 Festival, its performance winning for Black Dyke the Championship of that year. Black Dyke has been a famous band for generations, and their victory was received with great enthusiasm.

(b) - - - "Mill in the Dale" - - - S. Cope

A delightful and characteristic piece by MR. COPE

(BLACK DYKE MILLS BAND. Conductor : A. O. PEARCE)

6. Chorale - - - "Belle Vue" - - - J. Henry Iles

This Chorale was written by the Director, in commemoration of his visit to Belle Vue, Manchester, in 1898, when he heard for the first time the Brass Bands famous in those days. This led to the foundation by him of the present National Band Festival in 1900. The Chorale is set to the Doxology to which it can be sung.

"Praise God from whom all blessings flow,
Praise Him all creatures here below,
Praise Him above, ye Heavenly hosts,
Praise Father, Son and Holy Ghost."

7. Prize March - - - "Flying Column" - - - D. A. Pope

In order to encourage the students of Kneller Hall to study Brass Band orchestration and write original works for Brass Bands, Mr. Iles presents every year a Silver Cup and cash prize for the best Brass Band composition of the year. This was awarded to Student D. A. Pope for this March.

8. (a) - - - "Springtime" - - - Haydn Morris

Mr. Lowes' Band has twice won the Championship, and his attractive personality has done much to place Carlisle in the forefront of to-day's champions. "Springtime" is an original work by an accomplished musician, and was the test piece for the recent Belle Vue Championship.

(b) Trombone Duet - - - "Troubadours" - - - G. Hawkins

A Trombone Duet is a new feature, and will be followed with great interest by both bandmen and the general public.

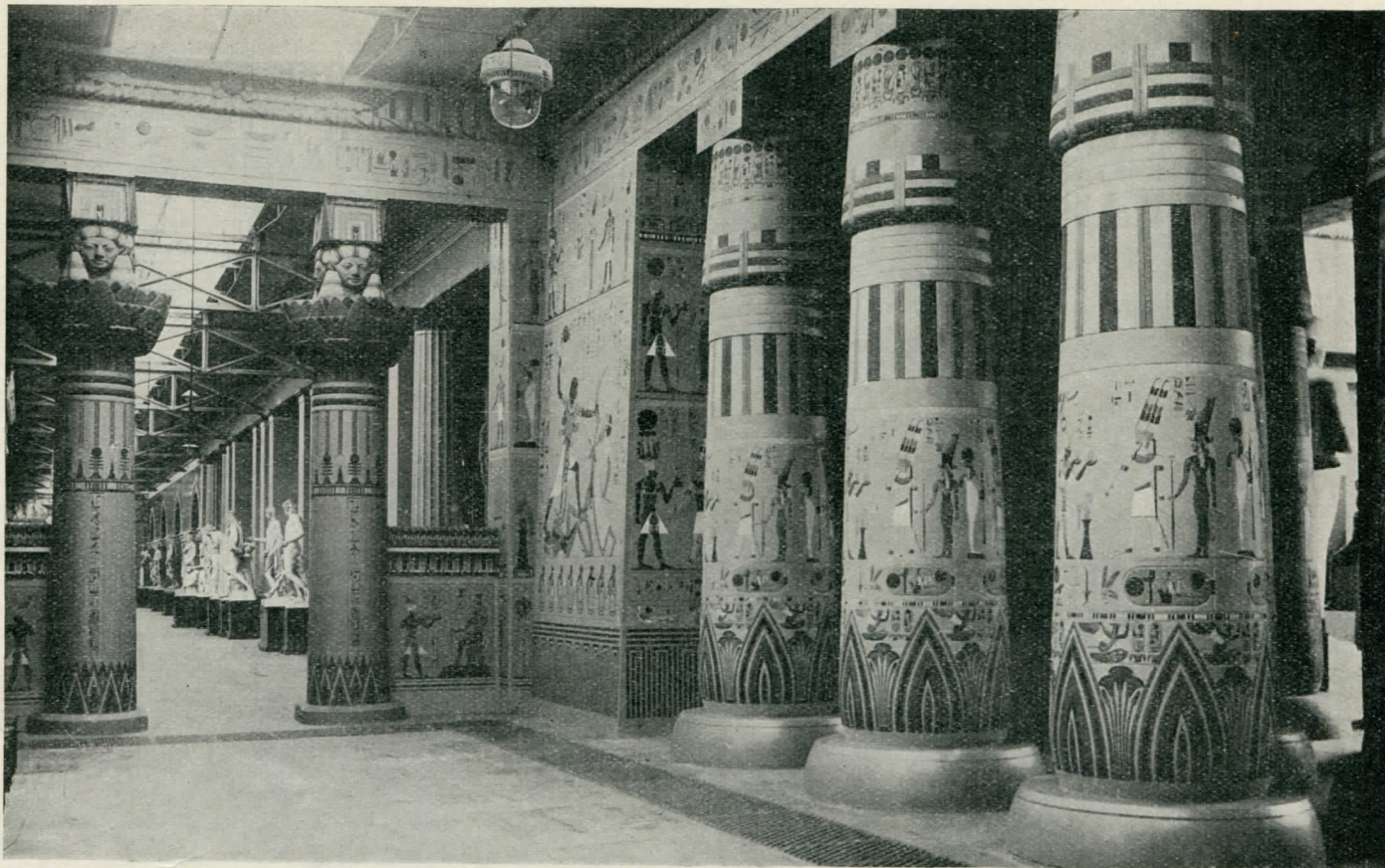
(CARLISLE ST. STEPHEN'S BAND. Conductor : W. LOWES)

9. - - - "Hallelujah Chorus" - - - Handel

This famous Chorus has been placed in the programme by request of a large number of patrons. It is singularly appropriate to give such a performance on a platform where so many great Handel Festivals have taken place.

Seats, Prices - - - 2/-, 3/-, 4/- and 5/- including tax.

**SEATS CAN BE BOOKED FROM 10 a.m. AT THE CRYSTAL PALACE BOX OFFICE
VISITORS ARE ADVISED TO BOOK EARLY**



CRYSTAL PALACE. COLUMNS OF THE TEMPLE OF KARNAK, EGYPTIAN COURT

[Continued from Page 3]

	Winning Band	Test Piece	Composer	Judges
1925.	MARSDEN COLLIERY ...	"Joan of Arc" ...	Dennis Wright ...	D. Wright Lt. Hoby
1926.	ST. HILDA ...	"An Epic Symphony" ...	Percy Fletcher ...	H. Bath J. Brier
1927.	CARLISLE ST. STEPHEN'S ...	"The White Rider" ...	Dennis Wright ...	E. Dunn H. Geehl
1928.	BLACK DYKE ...	"A Moorside Suite" ...	Gustav Holst ...	Sir G. Bantock H. Geehl
1929.	CARLISLE ST. STEPHEN'S ...	"Victory" ...	C. Jenkins ...	C. Jenkins H. Brian
1930.	FODEN'S MOTOR WORKS ...	"Severn Suite" ...	Sir Edward Elgar ...	C. Jenkins Dr. T. Keighley H. Geehl T. J. Rees G. Nicholls

The most elaborate arrangements are made in the conduct of the Festival to ensure every band getting fair play and equal consideration, and the vast proportions to which this day of days for Brass Bands has grown, and continues to flourish, is the best kind of compliment that can be paid to the Director and his Staff for the efficiency and straightforward conduct of their organisation.

The Great Concert of Massed Bands is, perhaps, the most attractive item of the day's crowded events, and thousands of visitors come to the Festival, year after year, so as not to miss these inspiring performances.

This year's programme, which will be found on page 14, is very imposing, and the rendering of the "Hallelujah Chorus" by the Massed Bands is something that can never be forgotten.

The item, "Pro Patria" (*Charles L. Naylor*), has been specially written for the Massed Bands, and is the first performance of a particularly fine and pleasing work.

Mr. J. Henry Iles, the Director and Founder of this Festival, has conducted the Massed Bands since 1900, and to-night the "Chorale," which he has written for these bands, will also mark another first performance at these concerts. It is founded on the words of the Doxology:—"Praise God from whom all blessings flow," and the last movement, with the trombones and basses in massed harmony, is most impressive and inspiring.

Visitors are strongly recommended to get their tickets for the Massed Bands *during the day* to avoid the rush and frequent disappointment which is likely to arise through leaving it too late.

The Kennel Club's 70th Open Championship Show

Wed. & Thurs., OCTOBER 7th & 8th

**THE PREMIER DOG SHOW OF THE
WORLD**

Over 2500 dogs of 78 different varieties
Open first day 10-8, second day 10-6

The Crystal Palace Grand International Show of Poultry, Pigeons and Rabbits

NOVEMBER 17th, 18th and 19th

THE WORLD'S CLASSIC SHOW
Over 12,000 Exhibits on view

CRYSTAL PALACE SPEEDWAY

**LEAGUE MATCHES
SATURDAYS at 3.30**

September 26th

CRYSTAL PALACE v. MANCHESTER
(Stand Seats 10d.)

October 3rd

**CRYSTAL PALACE v. WIMBLEDON
and SOUTH LONDON RIDERS'
CHAMPIONSHIP**

October 10th

**CRYSTAL PALACE v. LEA BRIDGE
and
CRYSTAL PALACE v. HIGH BEECH**

Admission 1/6 Children 6d.

**Combined Tickets Admission and
Covered Stand 2/4**

LIST OF EXHIBITORS IN SOUTH NAVE

ARMY & NAVY SUPPLY STORES,
118/120 Praed Street, Paddington, W. 2.

BEEVERS,
26 Aldermanbury, London, E.C. 2.

BESSON & Co., LTD.,
196/8 Euston Road, London, N.W. 1.

BOOSEY & HAWKES, LTD.,
295 Regent Street, London, W. 1.

BOSWORTH & Co., LTD.,
8 Heddon Street, Regent Street, London, W. 1.

BANDSMAN'S PRESS, LTD.,
210 Strand, London, W.C. 2.

CAMPBELL CONNELLY & Co., LTD.
10/11 Denmark Street, Charing Cross Road,
W.C. 2.

CHAPPELL & Co., LTD.,
50 New Bond Street, London, W. 1.

FELDMAN, B. & Co.,
125 Shaftesbury Avenue, London, W.C.

HULL, J. P.,
39 Glebe Road, Bromley, Kent.

DUCKWORTH, JOSHUA, LTD.,
Manifold Printing Works, Colne, Lancs.

KEITH PROWSE & Co., LTD.,
159 New Bond Street, London, W. 1.

LAWBACK BROS.,
1 Hawley Place, Kentish Town, London, N.W. 1.

LAWRENCE WRIGHT MUSIC Co.,
Denmark Street, Charing Cross Road, London,
W.C. 2.

PHILPOT, A. M.,
354 Beech Hill, Luton, Beds.

REYNOLDS, T., SENR. & SONS,
43 Chapel Street, Salford, Manchester.

R. SMITH & Co., LTD.,
210 Strand, London, W.C. 2.

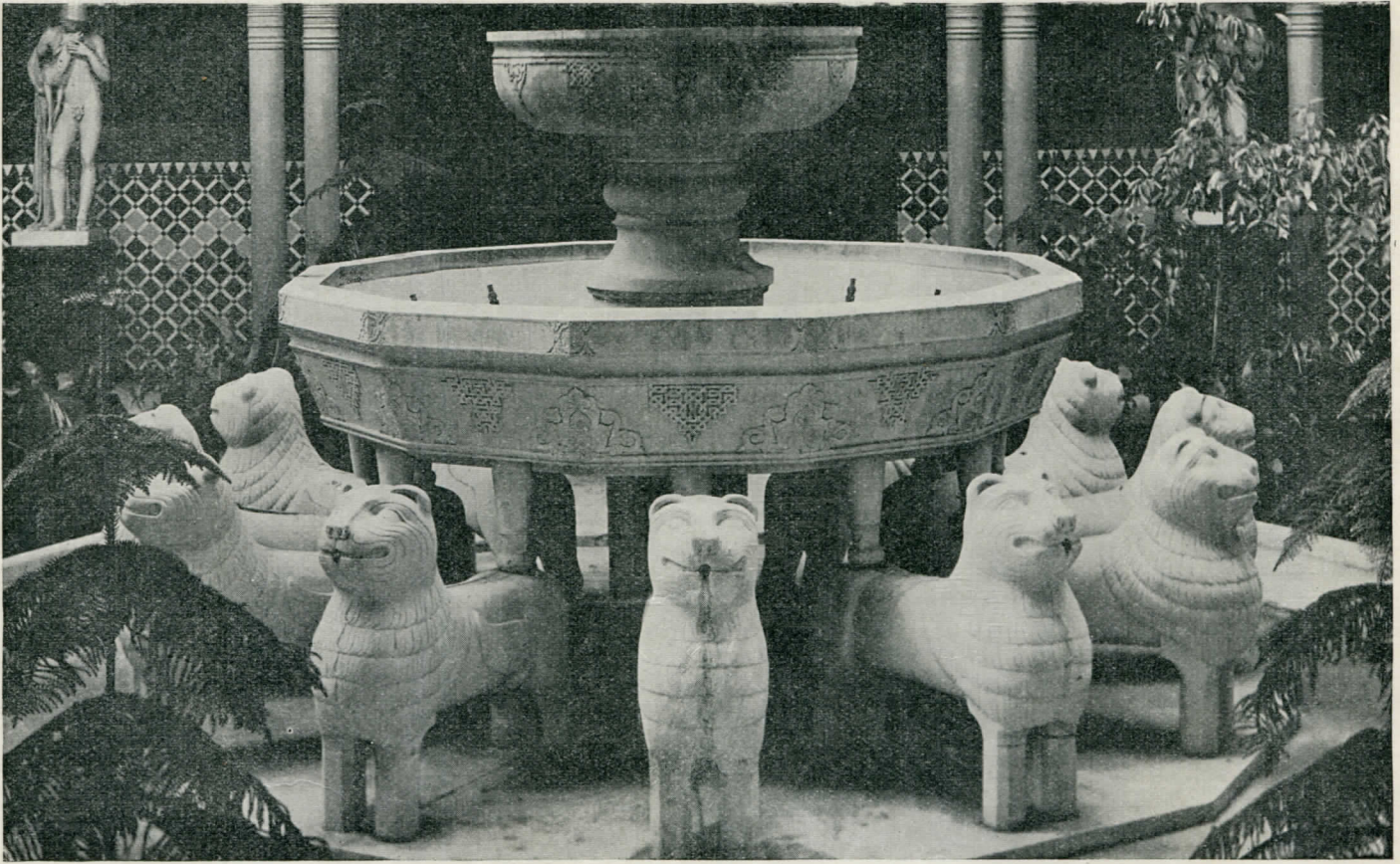
RUDALL, CARTE & Co., LTD.,
23 Berners Street, London, W. 1.

SMITH, W.,
246 The Grove, Hammersmith, W.

TOMKINS, F. & Co.,
71 Palmerston Road, Northampton.

UNIFORM CLOTHING & EQUIPMENT Co., LTD.,
10/11 Clerkenwell Green, London, E.C. 1.

WRIGHT & ROUND,
34 Erskine Street, Liverpool.



COURT OF LIONS IN THE TRIBUNAL OF JUSTICE, ALHAMBRA COURT, CRYSTAL PALACE

LOOK OUT!

when visiting the

CRYSTAL PALACE

for the

“Bandsman’s Recreation”

PAGES 52

PRICE 2/-

52 PAGES

CONTAINING THE SOLO CORNET PARTS
TO ALL THE “CHAMPION JOURNAL” MUSIC,
INCLUDING THE CRYSTAL PALACE AND SEPTEMBER
BELLE VUE TESTPIECES AND A SYNOPSIS OF ALL
THE PIECES, SPECIALLY WRITTEN BY JAMES BRIER.

ON SALE at the “BRITISH BANDSMAN” STAND

ENGAGEMENTS HAVE NOW
BEEN COMPLETED FOR THE
CRYSTAL PALACE
GRAND CONTINENTAL
CIRCUS

COMMENCING

BOXING DAY, December 26th

The Programme will include
**THE MOST POPULAR
CONTINENTAL ARTISTES**

Many of whom will be appearing
in England for the first time

Cheap Day Return Tickets

to the

CRYSTAL PALACE

Every week-day, by ALL TRAINS after 9.30 a.m.

Sundays and Bank Holidays by all trains, as under :—

<i>From</i>	<i>Return Fare</i>	<i>From</i>	<i>Return Fare</i>	<i>From</i>	<i>Return Fare</i>
LONDON BRIDGE	} 1/-	Croydon (S.)	-7	Richmond	1/6
VICTORIA		Denmark Hill	-8	St. Margaret's	1/9
HOLBORN VIADUCT		Earlsfield	1/-	Selhurst	-5
ST. PAUL'S		Elephant and Castle	1/-	Shepperton	2/9
WATERLOO	1/1	Epsom	1/6	South Bermondsey	1/-
Ashted	1/9	Ewell East	1/6	Streatham	-6
Balham	-6	Guildford	3/9	„ Common	-7
Banstead	1/6	Hampton Court	2/6	„ Hill	-5
Barnes	1/3	Herne Hill	-6	Surbiton	2/-
Barnes Bridge	1/6	Hounslow	1/9	Sutton	1/-
Beckenham Junction	-5	Isleworth	1/6	Teddington	2/-
Belmont	1/3	Kingston	2/-	Tadworth	2/-
Bickley	-10	Leatherhead	2/-	Thames Ditton	2/3
Birkbeck	-3	Malden	1/9	Thornton Heath	-6
Box Hill	2/6	Mortlake	1/6	Tooting Junction	-9
Brentford	1/6	Norbiton	2/-	Tulse Hill	-4
Brixton	-7	Norbury	-7	Twickenham	1/9
Brockley	-5	Norwood Junction	-3	Vauxhall	1/-
Bromley South	-8	Nunhead	-6	Wallington	-9
Carshalton	1/-	Orpington	1/6	Wandsworth Common	-8
Caterham	1/6	Peckham Rye	-8	Wandsworth Town	1/-
Clapham Junction	-9	Purley	-10	West Norwood	-3
Croydon (E. and W.)	-5	Putney	1/-	Wimbledon	1/-
		Raynes Park	1/6	Worcester Park	1/9

and numerous other S.R. Suburban Stations. Bookings also to Penge East and Penge West.

Quickest Way Home!

CHEAP SINGLE TICKETS TO LONDON
(Victoria, London Bridge & Holborn Viaduct)
Available at intermediate stations



Electric Trains to and from the Crystal Palace every few minutes

Save Time and Money by Travelling

SOUTHERN ELECTRIC