

THE 27TH ANNUAL BAND CONTEST



BEING THE 32ND ANNIVERSARY OF THE
G R E A T N A T I O N A L
B A N D F E S T I V A L

PROGRAMME AND SOUVENIR
OF THE CRYSTAL PALACE **6d.**



CRYSTAL PALACE

SIR HENRY BUCKLAND

General Manager

THE
32nd Anniversary of
the Great National
BAND FESTIVAL
(Being the Twenty-Seventh Band Contest)

OCTOBER 1st
1 9 3 2

Under the Gracious Patronage of
HIS MAJESTY THE KING

Director and Founder

Mr. J. HENRY ILES
(Officier d'Academie Francaise)

COPYRIGHT PUBLICATION
BY THE
PHOTOCHROM CO., LTD.
80 FLEET STREET, LONDON, E.C. 4



LOOKING TOWARDS THE GRAND STAIRWAY, CRYSTAL PALACE

*Ask any Band Conductor or Bandsman
the following questions:—*

WHAT is the name which is always spoken by Brass Wind musicians with ungrudging admiration?

WHAT is the model copied by foreign instrument makers and used by Dealers to boost their wares?

WHAT British make predominates in the instrumentation of Bands all over the world?

WHAT Trade Mark is generally recognised as representing Perfection in Wind Musical Instruments?

The answers must be — **BESSON!**

BESSON & Co. Ltd., 196-198 Euston Road, London, N.W.1

The Great National Band Festival

THE NATIONAL BAND FESTIVAL
 WAS FOUNDED IN 1900 BY MR J. HENRY ILES

A FEW PREFATORY NOTES

IT is a remarkable testimony to the popularity and attractiveness of the National Band Festival that at this, its Thirty-second Anniversary and, omitting the war period, the Twenty-seventh of the Series of Contests, the second highest number of contesting bands has to be recorded, notwithstanding that this is the second year of industrial depression.

It is estimated that the cost to each band attending the Festival amounts to a sum ranging from £50 to £100, besides loss of time to individual members and the inconvenience of travelling through the night, in many cases great distances, to and from the Crystal Palace.

In nearly every instance the required sum has to be earned and set aside out of the band's engagement remuneration, or obtained locally through voluntary donations and various schemes devised by the bands to raise the necessary funds.

Large sums are spent in tuition fees, professional teachers being engaged to put the band through the test pieces, and polish up the many different phases such tests provide. Tone, tune, time, phrasing, execution and general ensemble all play an important part in gaining marks from the Judges.

The Judges are not allowed to know the names of the bands, and are enclosed from view both of bands and the public before the draw for the order of rotation to play takes place. They are well placed for hearing the various performances, and award their marks to the bands in the *order in which they play*.

No one, including the Director, is allowed to learn of the Judges' decisions until they are announced immediately after the concert of Massed Bands. The Judges write out their awards, seal them, and place the envelope in the hands of the policeman on guard in their enclosure, and these envelopes never leave the custody of the police until broken by the Director and announced by him in the presence of the great audience of 25,000 to 30,000 people.

Here is a list of the Championship winning Bands from 1900 to 1912:—

1900. DENTON ORIGINAL (Lancashire)	1907. WINGATE'S TEMPERANCE (Lancashire)
1901. LEE MOUNT (Yorkshire)	1908. IRWELL SPRINGS (Lancashire)
1902. BLACK DYKE MILLS (Yorkshire)	1909. SHAW (Lancashire)
1903. BESSES O' TH' BARN (Lancashire)	1910. FODEN'S MOTOR WORKS (Cheshire)
1904. HEBBURN COLLIERY (Durham)	1911. CROSFIELD'S SOAP WORKS (Lancashire)
1905. IRWELL SPRINGS (Lancashire)	1912. ST. HILDA (Durham)
1906. WINGATE'S TEMPERANCE (Lancashire)	

It was at the 1913 Festival that an original piece of music for the Championship Test Piece was first introduced for Brass Band Contests. The names of the pieces and their composers, together with the winning bands and judges, are here set out in data order:—

<i>Winning Band</i>	<i>Test Piece</i>	<i>Composer</i>	<i>Judges</i>
1913. IRWELL SPRINGS...	... "Labour and Love" Percy E. Fletcher P. E. Fletcher, Lt. Bilton, J. Ord Hume
1920. ST. HILDA "Coriolanus" Cyril Jenkins C. Jenkins, W. Reynolds, T. Eastwood
1921. ST. HILDA "Life Divine" Cyril Jenkins C. Jenkins, H. Bath, J. Carter
1922. HORWICH R.M.I.	... "Freedom" Hubert Bath H. Bath, Lt. Bilton, Lt. Hoby

Continued on Page 18

With their usual enterprise, the National Sunday League has arranged for the Band winning the Championship and Thousand Guinea Trophy to play on Sunday, October 2nd, 1932, at the Finsbury Park Empire

THE NATIONAL BANDS' FEDERATION

cordially invites all Bands Associations to join the Federation and thus ensure co-ordinated action for the benefit of the Brass Band movement as a whole.

The Federation is the NATIONAL BODY REPRESENTATIVE OF THE BRASS BAND MOVEMENT.

Its membership is open **ONLY TO BANDS ASSOCIATIONS.**

It is NOT self-elected, its governing body being composed of a representative from EACH BANDS ASSOCIATION IN MEMBERSHIP, therefore, each Band in membership of an ASSOCIATION affiliated to the Federation has NATIONAL REPRESENTATION.

A copy of the Rules and Constitution will be willingly sent post free to Associations and Bands upon application being made to the Honorary Secretary, Mr. A. Jackaman, 73 Grosvenor Road, Belvedere, Kent (Telephone No. Erith 189)

BRITISH BANDS ASSOCIATION

(Member of the National Bands' Federation)

AN APPEAL TO BRITISH BANDSMEN

The Members of the BRITISH BANDS ASSOCIATION make an urgent appeal to all British Bandsmen and enthusiasts who are interested in the Brass Band Movement to take the golden opportunity now offered of doing something tangible towards placing the ALL-BRASS Band on a higher and worthy status such as that enjoyed by other instrumentations.

A big step forward has been made in the formation of the NATIONAL BANDS' FEDERATION, which has been founded on a sound and wide basis, sponsored by a few British gentlemen of the true type, and with the great good fortune of welcoming the Reverend H. Fairchild Huxtable, President of the Royal Tunbridge Wells and District Bands Federation, as its first President. The FEDERATION could not have had a more auspicious send-off. It has been founded to provide a rallying-ground for ALL-BRASS Band enthusiasts, whose resources of all kinds—intellectual, musical, financial and other—may be pooled and utilised for the common good of the great Movement we all love and of each individual member of it. Membership of the FEDERATION is open only to Bands Associations, not to individual Bands or Bandsmen.

Hence the principal reason for the formation of the BRITISH BANDS ASSOCIATION is to enable those Bands, big or little, to become affiliated to the NATIONAL FEDERATION, who—

- (a) Are not Members of a Bands Association already, or
- (b) Are Members of a Bands Association which is not affiliated to the National Federation.

Membership of the BRITISH BANDS ASSOCIATION is open to all Bands within the British Commonwealth.

May the Association have the pleasure of welcoming the services of your Band in this great progressive work, in which efforts of British Bandsmen will be devoted towards the furthering of the interests and the raising of the status of the great Movement to which we belong?

Honorary Secretary : A. H. WICKHAM,
39 Smitham Downs Road,
Purley, Surrey.

Telephone : Purley 4644.



AN OLD ENGLISH GARDEN. BY MAUDE ANGELL

Photochrom copyright

CRYSTAL PALACE. FROM S.E.



Established by Weaver & Dickson in 1882

DRUMS

The "MANETTE"
Contesting BAND
INSTRUMENTS
OF
PROVED
STANDARD



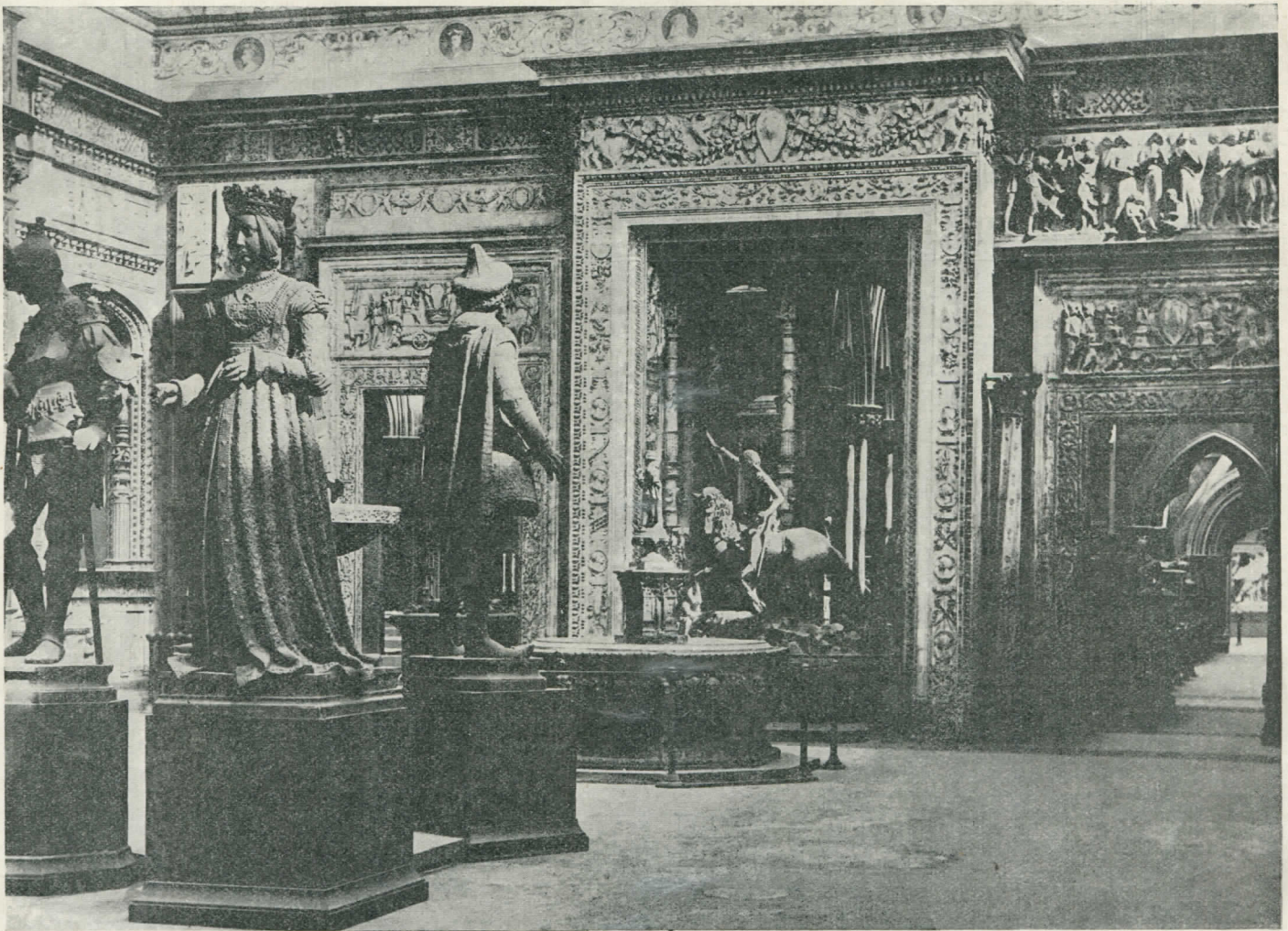
OUR No. 47
USED
BY THE
LEADING
BANDS FOR
OVER
25 YEARS

WE ADVISE THE USE OF SEPARATE TENSION SIDE DRUMS FOR
CONTESTING BANDS, either our No. 47 (illustrated above) or the Deep
Model (11" shell) with hoops painted to match the Band uniform.

BANDS SUPPLIED DIRECT OR THROUGH ANY REGULAR DEALER OR MUSIC HOUSE

at 17 Manette Street, London, W. 1

(Gerrard 4489)



CRYSTAL PALACE. INTERIOR OF THE RENAISSANCE COURT IN THE NORTH NAVE

The Mecca Cafes

CATERERS BY APPOINTMENT TO THE CRYSTAL PALACE

Head Offices, Stores, etc.: **76 SOUTHWARK STREET, S.E. 1**
LONDON:—CAFES AND RESTAURANTS

54 Gresham Street.
 Telegraph Street.
 101 Leadenhall Street.
 145 Cannon Street.
 Broad Street.
 14 Walbrook.
 49 London Wall.

50/51 Fore Street.
 31 Great St. Helens.
 75b Queen Victoria Street.
 3 Gresham Street.
 9/10 Mark Lane.
 23 Coleman Street.
 1 Whittington Avenue

69/70 Mark Lane.
 139 Cannon Street.
 King's Arms Yard.
 140 Cheapside.
 24 Lime Street.
 21 St. Mary Axe.
 15 Copthall Avenue.

68 Basinghall Street.
 56 Ludgate Hill.
 11a Queen Street.
 11/12 Blomfield Street.
 65/6 Chancery Lane.
 143 Charing Cross Road.
 57 Gracechurch Street.

PROVINCES

BIRMINGHAM

The Station Street Cafe,
 Station Street.
 The Kings Cafe,
 Midland Arcade, New Street.
 The Mecca Cafe,
 Waterloo Street.
 The Cafe Royal,
 Prudential Buildings,
 Corporation Street.

HOTELS.

THE ROOF GARDEN HOTEL, John Bright Street, BIRMINGHAM.

HULL

The Mecca Cafe,
 Prudential Buildings,
 King Edward Street.

CAMBRIDGE

The Mecca Cafe,
 Petty Gury.

SHEFFIELD

The Haymarket Hotel,
 Haymarket.

LIVERPOOL

The Cotton Exchange Cafe
 Ormond Street.
 The Mecca Cafe,
 6 Drury Lane.
 The Exchange Cafe,
 Exchange Flags.
 The Mecca Cafe,
 Clayton Square.
 The Mecca Cafe,
 India Buildings.

BRIGHTON

The Mecca Cafe,
 105 King's Road.

BRIDLINGTON

The Mecca Cafe,
 8/9 Garrison Street.

MANCHESTER

The Mecca Cafe, 37 Cross Street.

ST. ALBANS

The Mecca Cafe, Market Place.

TUNBRIDGE WELLS

The Mecca Cafe,
 44/46 The Pantiles.

THE HAYMARKET HOTEL, King Street, SHEFFIELD

SOLE CATERERS AT CRYSTAL PALACE, ROYAL OPERA HOUSE DANCES, (COVENT GARDEN), PALAIS DE DANSE (NOTTINGHAM). Also CONTROLLING THE RITZ PALAIS DE DANSE, (MANCHESTER), THE LOCARNO DANCE HALL, (STREATHAM), AND SHERRY'S DANCE HALL, (BRIGHTON), LIDO DANCE HALL, CROYDON, MECCA TOWEL SERVICE, 106/108 BROADWALL, S.E. 1, MECCA DRY CLEANING DEPARTMENT, 76 SOUTHWARK STREET, S.E. 1

The Great Championship Contest

for the

CRYSTAL PALACE ONE THOUSAND GUINEA TROPHY

LAST YEAR'S WINNER
WINGATE'S TEMPERANCE

11.50 a.m.—In the Concert Hall

Grand Championship Brass Band Contest for the Crystal Palace One Thousand Guinea Challenge Trophy and the "Daily Telegraph" Challenge Cup, and other Prizes

Adjudicators:—H. GEEHL
J. BRIER
H. BENNETT

PRIZES

FIRST PRIZE.—The Championship of Great Britain and the Colonies, the winners of which will be the holders for the year (under special regulations) of the CRYSTAL PALACE NATIONAL CHALLENGE TROPHY, of the value of One Thousand Guineas, and a CASH PRIZE OF FIFTY POUNDS, and Messrs. BESSON & Co., LTD., 198 Euston Road, London, N.W. 1, sole manufacturers of the celebrated "Prototype" Band Instruments, will present one of their famous "New Standard" Tenor Slide Trombones, handsomely silver-plated and embellished, complete in attaché case, valued at TWENTY POUNDS (£20), and Messrs. WRIGHT & ROUND, 34 Erskine Street, Liverpool, will present one Brass Band News Gold Medal to the Resident Bandmaster, value FOUR GUINEAS.

Each Member of the Band, including the Bandmaster and Secretary, will also be presented with the CRYSTAL PALACE CHAMPIONSHIP BRONZE MEDAL, with Bar and Clasp.

Members of the Band winning the Trophy for the second time will be presented with the same medal IN SOLID SILVER; and Members of the Band winning the Trophy for the third time will be presented with SOLID GOLD MEDALS.

SECOND PRIZE.—THE DAILY TELEGRAPH CHALLENGE CUP (subject to regulations), value Fifty Guineas, and a CASH PRIZE OF FORTY-FIVE POUNDS, and Messrs. BOOSEY & HAWKES, LTD., 295 Regent Street, London, W. 1, will present one Band Instrument, to be selected from their catalogue, to the value of TWENTY POUNDS.

THIRD PRIZE.—A CASH PRIZE OF FORTY POUNDS, and THE UNIFORM CLOTHING & EQUIPMENT Co., LTD., 10/11 Clerkenwell Green, London, E.C. 1, will present one Bandmaster's Complete Suit, including Frockcoat, Trousers and Cap, design to be selected by the winner, and also a Set of Gold-bronzed Music Stands, to the total value of SEVENTEEN GUINEAS.

FOURTH PRIZE.—A CASH PRIZE OF THIRTY-FIVE POUNDS, and THE ARMY & NAVY SUPPLY STORES, 118/120 Praed Street, Paddington, London, W. 2, will present one Bandmaster's Complete Outfit, to the value of SIXTEEN GUINEAS.

FIFTH PRIZE.—A CASH PRIZE OF THIRTY POUNDS, and Messrs. B. FELDMAN & Co., 125 Shaftesbury Avenue, London, W.C., will present one Boosey Bb Cornet "N.V.A." Silbron Valves, triply-plated and engraved, value FIFTEEN GUINEAS.

SIXTH PRIZE.—A CASH PRIZE OF TEN POUNDS, and Messrs. CHAPPELL & Co., LTD., 50 New Bond Street, London, W. 1, will present one Triple Silver-plated and Engraved "Desideratum" Cornet No. 11, with Ab and Bb shanks, complete in high and low pitch, made by Messrs. Besson & Co., valued at FIFTEEN GUINEAS.

1. CHAMPIONSHIP CONTEST

TEST PIECE: "A DOWNLAND SUITE" ... John Ireland

SECTION 1

No.	Draw	Conductor	Draw	Result
1. Baxendale's Works	...	J. A. Greenwood	33	4
2. Bentley Colliery	...	W. Halliwell	9	...
3. Black Dyke Mills	...	W. Halliwell	9	2
1. Bradford City	...	H. Grace	2	...
5. Brighthouse and Rastrick	...	W. Halliwell	20	5
6. Carlisle St. Stephen's	...	W. Lowes	16	...
7. Crystal Palace	...	W. Reynolds	19	...
8. Eccles Borough	...	J. Dow	17	...
9. Foden's Motor Works	...	F. Mortimer	4	1
10. Hanwell	...	J. C. Dyson	12	...
11. Harton Colliery	...	W. Lowes	5	6
12. Horden Colliery	...	J. Foster	14	...

No.	Band	Conductor	Draw	Result
13. Irwell Springs	...	W. Halliwell
14. Luton	...	E. S. Carter
15. Metropolitan Works	...	H. Heyes	...	22
16. Middlesbrough Boro	...	J. Wilson	...	13
17. Morris Motors	...	S. V. Wood	...	10
18. Nelson Old	...	W. Halliwell	...	21
19. Rothwell Temperance	...	N. Sidebottom	...	1
20. St. Dennis	...	C. H. Baker	...	7
21. Scottish C.W.S.	...	G. Hawkins	...	15
22. Wigston's Temperance	...	C. Moore	...	3
23. Wingate's Temperance	...	H. Moss

Admission to Concert Hall ... TWO SHILLINGS

NOTE.—The Director's Office is in front of the Concert Hall. At "THE BRITISH BANDSMAN" Stand, adjoining, can be obtained the Conductor's parts of the Test Pieces—Price Two Shillings.

A MUSICAL EXHIBITION

WILL BE HELD IN THE SOUTH NAVE

By all the Leading Musical Instrument Manufacturers, etc.

See List of Exhibitors. Page 20

The Head Quarters of the National Brass Band Club will be in the Crystal Palace Club room and will be available for members and friends. Mr. J. H. Kichenside, The Hon. Secretary, will be pleased to welcome them.

DON'T FORGET to visit the

CHAPPELL MUSIC STALL

A SPLENDID OPPORTUNITY OF PURCHASING OUR

New Brass Band Selection

(released this day) entitled

“ A PANORAMA OF FAMOUS SONGS ”

ALSO

NEW SOLO CORNET BOOKS, and other Novelties

SPECIAL TERMS FOR THE DAY ONLY

FOUR GREAT CORNET SOLO SUCCESSES

(WITH PIANO OR BRASS BAND ACCOMP.)

“ TREES ”

“ I WANT YOUR HEART ”

“ SONG OF SONGS ”

“ YOU ARE MY HEART'S DELIGHT ”

CHAPPELL & CO., Ltd. (Band Music Dept.)

50 New Bond Street, London, W. 1

11.30 a.m.—In the Theatre

Brass Band Contest for the "Daily Express" Challenge Shield and "The People" Challenge Shield and other Prizes

Adjudicators:—T. KEIGHLEY
J. T. REES

PRIZES

FIRST PRIZE.—THE *DAILY EXPRESS* CHALLENGE SHIELD (subject to regulations) value Fifty Guineas, and a CASH PRIZE OF TWENTY POUNDS, and Messrs. BEEVERS, 26 Aldermanbury, London, E.C. 2, will present one Bandmaster's Frockcoat Suit and Cap, or one Set of Band Caps, according to choice of winning band, to the value of TWELVE GUINEAS, and Messrs. WRIGHT & ROUND, 34 Erskine Street, Liverpool, will present one *Brass Band News* Gold Medal to the Resident Bandmaster, value THREE GUINEAS.

SECOND PRIZE.—THE *PEOPLE* CHALLENGE SHIELD (subject to regulations), and a CASH PRIZE OF FIFTEEN POUNDS, and Messrs. A. M. PHILPOT, 354 Beech Hill, Luton, Beds., will present one Bb Tenor Trombone, valued at TWELVE GUINEAS.

THIRD PRIZE.—A CASH PRIZE OF TWELVE POUNDS, and Messrs. BOOSEY & HAWKES, LTD., 295 Regent Street, London, W. 1, will present a handsome Bandmaster's Frock Coat in Military Lappet style, with gold-embroidered collar and cuffs, complete with Cap and gold-embroidered peak and gold band, and Pair of White Kid Gloves, measured and fitted to individual requirements, valued at TEN GUINEAS.

FOURTH PRIZE.—A CASH PRIZE OF TEN POUNDS, and Messrs. CAMPBELL CONNELLY & Co., LTD., 10-11 Denmark Street, Charing Cross Road, W.C. 2, will present one Cornet, silver-plated and especially engraved, in cowhide attaché-shaped case, value TEN GUINEAS.

FIFTH PRIZE.—A CASH PRIZE OF EIGHT POUNDS, and Messrs. KEITH PROWSE & Co., LTD., 159 New Bond Street, London, W. 1, will present one Contesting Model Cornet, triply silver-plated, complete in leather case, valued at TEN GUINEAS.

SECTION 2. GRAND SHIELD CONTEST

(Last Year's Winners: MORRIS MOTORS BAND)

Test Piece	Band	Conductor	Draw	Result
1. Barrow Shipyard	...	W. Halliwell	20	5
2. Blackhall Colliery	...	N. Thorpe	3	
3. Blyth L.N.E.R.	...	G. Ramsden	9	
4. Cambridge Railway	...	D. Wright	1	
5. Crookhall Colliery	...	W. Richards	15	
6. Dunlop Works	...	W. A. Tomlinson	11	
7. Edmonton	...	W. Tyrrell	14	
8. Kettering Town	...	J. Woolley	13	3
9. Lowerhouse Mills	...	G. Altham	7	
10. Pleasley Colliery	...	B. Lambeth	16	
11. Raunds Temperance	...	W. Halliwell	17	
12. Ripley United	...	W. J. Saint	8	
13. Rushden Temperance	...	T. Young	6	1
14. Rushden Town	...	M. J. Roberts	5	
15. St. Pancras	...	F. Dimmock	19	
16. Skipton	...	F. L. Metcalfe	12	
17. Todmorden Old	...	W. Mitchell	18	
18. WallSEND United Collieries	...	J. Boddice	10	4
19. Willesden Town	...	C. McManus	17	
20. Workington Town	...	J. J. Fisher	7	2

11.30 a.m.—In the North Tower Gardens

Brass Band Contest for the "Daily Sketch" Challenge Cup and "The News and Chronicle" Trophy and other Prizes

Adjudicators:—F. ROGAN
H. HIND

PRIZES

FIRST PRIZE.—THE *DAILY SKETCH* CHALLENGE CUP (subject to regulations), value Fifty Guineas, and a CASH PRIZE OF FIFTEEN POUNDS, and THE LAWRENCE WRIGHT MUSIC Co., Denmark Street, Charing Cross Road, London, W.C. 2, will present one Set of Music Stands, valued at NINE POUNDS.

SECOND PRIZE.—THE *NEWS AND CHRONICLE* TROPHY (subject to regulations), and a CASH PRIZE OF TEN POUNDS, and Messrs. F. TOMPKINS & SON, 71 Palmerston Road, Northampton, will present one F. Tompkins Bb Cornet (Class "A"), valued at SEVEN GUINEAS.

THIRD PRIZE.—A CASH PRIZE OF EIGHT POUNDS, and J. P. HULL, Esq., 39 Glebe Road, Bromley, Kent, will present one Cornet and Case, valued at FIVE GUINEAS.

FOURTH PRIZE.—A CASH PRIZE OF SEVEN POUNDS, and Messrs. T. REYNOLDS SNR. & SONS, 43 Chapel Street, Salford, Manchester, will do repairs and silver-plating to the value of FIVE POUNDS.

FIFTH PRIZE.—A CASH PRIZE OF FIVE POUNDS, and Messrs. JOSEPH DUCKWORTH, LTD., Manifold Printing Works, Colne, Lancs., will present *The Champion Journal* and Music to be selected from the catalogue of Messrs. R. Smith & Co., Ltd., to the total value of FOUR GUINEAS.

SECTION 3. JUNIOR CUP "A" CONTEST

(Last Year's Winners: RUSHDEN TEMPERANCE)

Test Piece	Band	Conductor	Draw	Result
1. Aldridge Colliery	...	E. T. Smith	3	2
2. Bedford Trades	...	E. M. Mobbs	16	
3. Chislet Colliery	...	E. S. Carter	27	
4. Clayton	...	F. Berry	6	
5. Coxlodge Institute	...	G. Snowdon	10	
6. Coventry	...	W. Ellison	10	
7. Craghead Colliery	...	J. Smith	10	
8. Croydon Borough	...	E. W. Miles	32	
9. Falmouth Town	...	T. J. Chaine	29	1
10. Friary Brewery	...	J. C. Dyson	16	
11. Glasgow St. Francis	...	W. T. Anderson	16	
12. Great Central & Metropolitan	...	W. Smith	16	4
13. Irlam Public	...	R. Hesford	15	
14. Lambeth Borough	...	G. Daley	14	
15. Lycett Mission	...	F. Dimmock	14	
16. Melingriffith V. & C.C.	...	T. J. Powell	12	
17. Ollerston Colliery	...	E. Slack	12	
18. Radstock	...	T. Valentine	25	
19. Rugby Town	...	S. J. Bedford	18	5
20. Sheffield Corporation Tramways	...	W. Halliwell	18	
21. Urpeth Collieries	...	J. Boddice	18	3
22. Watford	...	R. Hutchinson	20	
23. Wolverton Town	...	A. F. Brooks	24	
24. Wood Green Excelsior	...	W. L. Dolling	25	
25. Viewsley & West Drayton	...	A. W. Allen	25	

11.30 a.m.—In the Dance Hall

Brass Band Contest for the "Daily Mirror" Challenge Cup, the "Pearson's Weekly" Challenge Shield and other Prizes

Adjudicators:—J. OLIVER
B. WINDSOR

PRIZES

FIRST PRIZE.—THE *DAILY MIRROR* CHALLENGE CUP (subject to regulations), value Fifty Guineas, and a CASH PRIZE OF FIFTEEN POUNDS, and Messrs. BOSWORTH & Co., LTD., 8 Heddon Street, Regent Street, London, W. 1, will present one Set of Eb Tubular Bells, valued at FOUR GUINEAS.

SECOND PRIZE.—THE *PEARSON'S WEEKLY* CHALLENGE SHIELD (subject to regulations), value Fifty Guineas, and a CASH PRIZE OF TEN POUNDS, and THE PREMIER DRUM Co., LTD., 64 Berwick Street, Oxford Street, London, W. 1, will present one of their famous Turkish Cymbals, suitably engraved, valued at FOUR GUINEAS.

THIRD PRIZE.—A CASH PRIZE OF SEVEN POUNDS, and THE QUICKFIT PUBLISHING Co., 16 Jutland Avenue, Rochdale, will present one Set (26) of "Selection" Music Folios, two Gusset Pockets, Eyeletted and Elastic, Gold Embossed Instrumentation Label on side, name of band lettered in gold or silver, bound in waterproof material, valued at TWO POUNDS TWELVE SHILLINGS.

FOURTH PRIZE.—A CASH PRIZE OF FIVE POUNDS.

FIFTH PRIZE.—A CASH PRIZE OF THREE POUNDS.

SECTION 4. JUNIOR CUP "B" CONTEST

(Last Year's Winners: SHEFFIELD CORPORATION TRAMWAYS)

Test Piece	Band	Conductor	Draw	Result
1. Bedford Town	...	F. Robinson	11	
2. Bourneville Works	...	I. Perrin	31	
3. Bromley Borough	...	S. J. G. Craker	32	
4. Brixton and Clapham	...	R. A. Leedham	2	
5. Cardiff City Tramways	...	E. Jones	29	
6. Cawston and District	...	J. Singleton	15	
7. Coventry Colliery and Keresley	...	C. Shepperd	15	
8. Denby Dale	...	N. Thorpe	17	
9. Dudley Colliery Workmen's	...	J. B. Bootland	16	
10. Durham Shakespeare Temperance	...	F. Wakeford	13	4
11. Basington Colliery	...	E. Smith	11	
12. Horsham Borough	...	W. Albery	4	
13. John Thompson Works	...	A. Smith	2	
14. Leadgate Mission	...	J. R. Foster	23	
15. Leyton Borough	...	H. Rundle	16	2
16. Manchester C.W.S.	...	J. A. Greenwood	16	5
17. Morrison Collieries	...	H. Haigh	12	
18. Ripon City	...	H. W. Hill	2	
19. Rowntree's Cocoa Works	...	H. Lambeth	6	
20. Shirebrook	...	J. Levick	22	
21. Soham Comrades	...	C. A. Anderson	14	3
22. Thorne Colliery	...	P. Stapleton	24	
23. Thornley Colliery	...	E. Kitto	20	
24. West Bromwich Excelsior	...	J. T. Hughes	20	
25. Worksop Borough	...	C. Pressley	25	1

Visitors are strongly recommended to get their tickets for the Massed Bands Concert during the day to avoid the rush and frequent disappointment which is likely to arise through leaving it too late.

THE BRITISH BANDSMAN

Do you read regularly your weekly paper ?

Each number contains special features, including "Chats and Comments," by the Editor.

A series of practical advice to junior bandmen of all grades, by J. Brier.

Articles of general interest on new and old subjects.

Band news from all quarters of the British Empire.

Reports from Band Associations and Festival Guilds.

Letters from Correspondents, with free expressions of views and opinions.

Diary of Champion Contests and earliest reports of results.

Illustrations and photos of Bands, Band Officials and Soloists.

Trade advertisements and private wants.

NOTE that the B.B. Circulates to All Parts of the British Empire

Small advertisements (for including in next issue) must be received by Tuesday's first post. Rates:—

20 words for 2/-	Three insertions 5/-	30 words for 3/-	Three insertions 7/6
40 words for 4/-	Three insertions 10/-	Display (small) 7/6 per inch.	

Price 3d. (post free) 3½d. May be obtained by order from any Newsagents. Wholesale Agents W. H. Smith and Sons.

Subscription terms 3/6 per quarter, post free.

OFFICES :

210 STRAND, LONDON, W.C.2

Telephone : CENTRAL 1166



CALL AT EVANS' STAND

AND INSPECT
NEXT SEASON'S DESIGNS

ORIGINAL
IDEAS



NEW
MATERIALS

UP-TO-DATE METHODS

Contractors to Wingate's

EVANS

THE UNIFORM CLOTHING & EQUIPMENT CO., LTD.
10, 11 CLERKENWELL GREEN, LONDON, E.C.1

'Phone: Clerkenwell 6682/5226.

'Grams: Uniquip, London.

MANCHESTER

'Phone: Pendleton 2144.

Also at

GLASGOW

'Phone: Central 519.

BELFAST

'Phone: Belfast 6872.

CARDIFF and ST. DENNIS, CORNWALL

Northern Representative: Mr. JAS. CLARKSON,
47 BARRFIELD ROAD, PENDLETON, MANCHESTER

11.30 a.m.—In the Canadian Building

Brass Band Contest for the "Cassell's" Challenge Shield and other Prizes

Adjudicators:—H. YOULD
C. WARD

PRIZES

FIRST PRIZE.—THE CASSELL'S CHALLENGE SHIELD (subject to regulations), value Fifty Guineas, and a CASH PRIZE OF TEN POUNDS.
SECOND PRIZE.—A CASH PRIZE OF EIGHT POUNDS.
THIRD PRIZE.—A CASH PRIZE OF FIVE POUNDS.
FOURTH PRIZE.—A CASH PRIZE OF FOUR POUNDS.
FIFTH PRIZE.—A CASH PRIZE OF THREE POUNDS.

SECTION 5. JUNIOR SHIELD "A" CONTEST

(Last Year's Winners: OGMORE VALLEY TEMPERANCE BAND)

Test Piece	Band	Conductor	Draw	Result	Rossini
1. Alderley Edge	...	J. H. White
2. Birtley Ouston ("E" Pit)	...	A. G. Ward
3. Black Dyke Mills Junior	...	H. Hepworth
4. Brynmawr	...	S. Moundfield
5. Burton Excelsior	...	E. Booth
6. Butterley Co. (Ambulance)	...	J. Sharpe
7. Cheetham Hill Public	...	J. Jessop
8. Hayes and Harlington	...	A. T. Matson
9. House of Dickinson	...	J. C. Dyson
10. Kibworth	...	S. H. Iliffe
11. Leek British Legion	...	H. Mortimer
12. Long Eaton	...	H. Everts
13. Lydney Town	...	R. A. Hodges
14. Newsome's Public Works	...	W. I. Warburton
15. Northfleet	...	F. G. Drain
16. Paulton	...	R. Kingman
17. Rudgwick	...	W. Smith
18. Rushden Wesleyan Mission	...	F. Robinson
19. Ryhope Colliery	...	S. Lemin
20. Sheppey Boys	...	F. Dowell
21. Smallthorne Excelsior	...	G. F. Slater
22. South Moor Colliery	...	W. L. Turnbull
23. Swindon G.W.R. S.E. Union	...	J. Lennon
24. Taff Merthyr Colliery	...	J. Williams
25. Tilbury Town	...	L. Nicholls
26. Treherbert United National	...	J. G. Dobbing
27. Wellingborough L.M.S.	...	W. Groome
28. Wheatley Hill Colliery	...	W. R. K. Straughan
29. Whyteleafe Village	...	P. Clarke
30. Ystradgynlais Public	...	T. C. White

11.30 a.m.—On the Terrace

Brass Band Contest for the "Iles" Challenge Shield and other Prizes

Adjudicators:—G. MERCER
J. EATON

PRIZES

FIRST PRIZE.—THE ILES CHALLENGE SHIELD (subject to regulations), value Fifty Guineas, and a CASH PRIZE OF EIGHT POUNDS.
SECOND PRIZE.—A CASH PRIZE OF SEVEN POUNDS.
THIRD PRIZE.—A CASH PRIZE OF FIVE POUNDS.
FOURTH PRIZE.—A CASH PRIZE OF THREE POUNDS.
FIFTH PRIZE.—A CASH PRIZE OF TWO POUNDS.

SECTION 6. JUNIOR SHIELD "B" CONTEST

(Last Year's Winners: MANCHESTER C.W.S. BAND)

Test Piece	Band	Conductor	Draw	Result	Rossini
1. Aldbourne	...	F. Dimmock
2. Baldwin's Workmen's	...	T. Brennan
3. Berkhamsted Excelsior	...	J. Messinger
4. Burton	...	H. A. Reynolds	5
5. Burslem Imperial	...	T. Caldwell
6. Calne Town	...	C. E. Blackford
7. Canterbury City	...	W. H. Smith
8. Caterham	...	E. W. Miles
9. Corris and District	...	D. L. Jones
10. Crewkerne	...	C. W. L. Pinney
11. Glastonbury Town	...	R. W. Davison
12. Haywards Heath	...	W. G. Bosley
13. High Wycombe Excelsior	...	A. Mustoe
14. Hitchin Town	...	J. T. Cannon	4
15. Killamarsh	...	G. Burnham
16. Kingsbridge	...	W. G. Jerwood
17. Knottingley	...	S. Marshall
18. Llanidloes Boro and 7th R.W.F.	...	G. Nicholls
19. Long Lawford	...	W. Wheatley
20. Luton Junior	...	F. H. Ellingham
21. Manningtree British Legion	...	H. Morris
22. Murton Colliery	...	J. W. Jackson	2
23. Reepham Temperance	...	E. T. Ruffles
24. Seaton (Cumberland)	...	W. J. Smith
25. Southbourne	...	G. T. Devereux
26. Staines United Temperance	...	W. J. Sanders
27. Towcester Studio	...	C. F. Brown
28. West Bromwich Borough	...	J. H. Boffy
29. West Chiltonington	...	C. M. Chatfield
30. West Hull Excelsior	...	S. Walmsley	3
31. Whitechurch Town	...	H. Felton

11.30 a.m.—In the School of Art

Brass Band Contest for the "Champion Journal" Challenge Cup and other Prizes.

Adjudicators:—G. CAVE
T. EASTWOOD

PRIZES

FIRST PRIZE.—THE CHAMPION JOURNAL CHALLENGE CUP (subject to regulations) and a CASH PRIZE OF EIGHT POUNDS.
SECOND PRIZE.—A CASH PRIZE OF SEVEN POUNDS.
THIRD PRIZE.—A CASH PRIZE OF FIVE POUNDS.
FOURTH PRIZE.—A CASH PRIZE OF THREE POUNDS.
FIFTH PRIZE.—A CASH PRIZE OF TWO POUNDS.

SECTION 7. JUNIOR SHIELD "C" CONTEST

(Last Year's Winners: RUSHDEN MISSION)

Test Piece	Band	Conductor	Draw	Result	J. Ord-Hume
1. Aveley	...	A. Green
2. Blaengarw	...	W. Jenkins
3. Bletchington	...	W. D. Uzzell
4. Cambourne Junior	...	J. Eustace
5. Cannock Chase Colliery	...	J. G. R. Critchlow
6. Chatham Town	...	J. Lewis
7. Chatteris Town	...	A. P. Setchfield
8. Cirencester	...	G. Churchman
9. Ealing Town	...	F. Jarvis
10. Giggleswick	...	W. Brown
11. Glynn Vivian Miners' Mission	...	W. Lee
12. Haggerston	...	A. E. Chandler
13. Hilton Colliery	...	H. Brooker	4
14. Hooe	...	H. Smith
15. Ilford (St. John Ambulance)	...	E. H. Allder
16. Kempston	...	A. Warrington	3
17. King's Dyke and Whittlesey	...	G. Anker
18. King's Lynn Town	...	E. Cox
19. Markham and District Colliery	...	L. H. Locke	1
20. Newport Pagnell Excelsior	...	A. Green
21. North Evington W.M. Club	...	C. A. Anderson
22. Sacriston Town	...	J. Johnson	5
23. Settle	...	J. Patterson
24. Shirland and Higham	...	C. A. Cooper
25. Thornton Heath	...	C. G. Hilliard
26. Tyseley Institute	...	E. F. Stokes
27. Widdington	...	Rev. James W. Court	2
28. Wokingham Town & Brit. Legion	...	H. W. Langley

BEEVER'S UNIFORMS

Established over Seventy Years

If good workmanship, sound cloth, perfect fitting is wanted, then bands have only one choice—a **BEEVER UNIFORM**. We may be higher in price than others, but we are better, and the best is the cheapest in the long run. Your troubles are over when Beever's supply you. Call at our Stand, don't be had by brag and bounce, get a £1 value for every £1 paid.

BEEVER'S NEVER LET YOU DOWN

NOTE ADDRESS—

**26 Aldermanbury, London, E.C.2
or Brook St., Huddersfield, Yorks.**



J. HENRY ILES

ALTHOUGH the events of to-day are described in the concrete term of "Festival," the main interest to the public is doubtless focussed on the Massed-Band Concert, whilst to the bands of the country and their supporters, the principal interest naturally centres round the contests.

It should be realised that these Contests are really a means to an end, for they furnish the medium and method for an upward progress of bands possessed of natural talent combined with industry and earnestness in its cultivation, from the lowest to the topmost grade.

It is a distinguishing feature of these Contests that in the seven sections, or stages, are samples ranging from the homely village brass bands to the champion brass bands of the world!

The leading composers of to-day have for some time past recognised the capabilities of the championship class bands as an educational force, and have contributed original works for their exploitation and supreme test; public authorities have also at last realised their value as a popular form of attraction for out-door entertainment.

These results, however, have been matters of gradual process, and the evolution has been patiently and skilfully engineered by one man—the Director of these Annual Festivals—Mr. J. Henry Iles.

The following paragraph is quoted from a discursive "chat" by the Editor of "THE BRITISH BANDSMAN" in its weekly issue, dated 17th September last:—

"Since Mr. Iles became such a controlling force in the band world he has encouraged the upward progress

THE NATIONAL BAND FESTIVAL AND ITS FOUNDER

of bands to an abnormal extent, and it was only to be expected that his influence would be felt in the provision of a modicum of advanced, or rather of high-grade music for bands, the benefit of which is known by the elder generation of bandsmen. I feel, however, that it is questionable about the younger school of bandsmen knowing the full extent of his influence, his generosity and self-sacrifice in their interests, and it is an opportune moment, perhaps, to enlighten them."

If this knowledge is questionable in the case of young bandsmen, it is to a certainty doubtful in the case of the general public, and so no apology is needed for the continuation of the Editor's further observations as follows:—

"It was Mr. Iles who raised brass bands from a situation of parochial influence up to a position of universal esteem. He it was who brought the leading bands from the Northern provinces to London, over thirty years ago, and secured for them Royal patronage and a London repute—which has been perpetuated in the Crystal Palace Annual Festival ever since."

"He it was who organised the wonderful first foreign triumphal tours of Besses o' th' Barn Band, also their home tours, and those of Black Dyke and other famous bands, by which the drawing power of these bands as an outdoor attraction was first made known generally, as a result of which the services of our bands are now sought after, and touring engagements have been undertaken by them. His influence has been used in certain other directions, which I am precluded from disclosing, but the advantages of which are being, or will be, enjoyed by our good bands of to-day."

"We therefore owe Mr. Iles a deep debt of gratitude."

"As mentioned in a prior 'Chat,' it is his first, and indeed his one great desire, to maintain the dignity and supremacy of our bands, particularly at the Annual National Contests at Belle Vue and the Crystal Palace, regardless of any personal consideration, and it is gratifying to feel that in this desire he has the support of the bands solidly behind him."

S. C.

6.30 p.m. ORGAN RECITAL by Mr. GATTY SELLARS

1. Polonaise in A - - - - - Chopin
2. Farandole (Second Suite, "L'Arlesienne") - - - - - Bizet
3. Oriental Tone Picture - "In the Shadow of the Mosque" (new) - - - - - Gatty Sellars
Bedouin's Serenade—Mohammedan Girls' Dance—Moslem Chant—March of the Khedive's Guard.
4. Ballet Music from "Faust" (No. 7) - - - - - Gounod
5. (a) Oriental Tone Picture - - - - - "In Old Thibet" - - - - - Gatty Sellars
Caravans approaching—Devil Dance—Song of the Muleteer—Monk's Chant in Monastery of Lhasa.
- (b) Military One-Step - - - - - "Brightonia" (new) - - - - -

7 p.m. THE MASSED BANDS

BRIGHOUSE AND RASTRICK	HARTON COLLIERY
CARLISLE ST. STEPHEN'S	IRWELL SPRINGS
CRYSTAL PALACE	ST. HILDA'S
FODEN'S MOTOR WORKS	

Conductor - - - - - MR. J. HENRY ILES

PROGRAMME

(NOTE.—Owing to the length of the programme encores will be strictly limited.)

1. (a) Fanfare (No. 1) - - - - -
- (b) The National Anthem - - - - -
2. March - - - - - "Death or Glory" - - - - - Hall
A spirited and rhythmic March, and one that is very popular with bands.
3. Hymns - - - - - (a) "Praise my Soul" - - - - - Goss
(By permission of Lady Carbery)
- (b) "Edwinstone" - - - - -
- The first Hymn is reputed to be the favourite one of His Majesty the King, whilst the second is a traditional and attractive tune with Northern bands.
4. Symphonic Rhapsody - - - - - "The Crusaders" - - - - - T. Keighley

(On Scott's Novel, "The Talisman.")

Synopsis.—FIRST MOVEMENT:—(a) The Talisman; (b) Richard Cœur de Lion; (c) The Saladin; (d) Edith Plantagenet; (e) Kenneth the Scot.
SECOND MOVEMENT:—Romance (Blondel Sings).
THIRD MOVEMENT:—In the Camp of the Moors.
FOURTH MOVEMENT:—The Gathering and the Combat.
FIFTH MOVEMENT:—Kenneth Triumphant.

The above Rhapsody was composed specially by Dr. Keighley for the 80th Annual Belle Vue (Manchester) September Brass Band Contest, on the 5th September last, for the performance of which Brighthouse and Rastrick Band was awarded first prize.

(BRIGHOUSE AND RASTRICK BAND. Conductor: M. Wood)

5. March - - - - - "Mandora" - - - - - S. W. Ord-Hume
This is the initial March of a promising young composer. It possesses a good lilt and effective contrasts and counter-subjects, and is well arranged, thus upholding the reputation of a name universally known in the band world.
6. (a) Minuet from "Samson" - - - - - Handel
- (b) Prelude - - - - - Op. 28. No. 20 - - - - - Chopin
- (a) The Minuet is a dainty dance of French origin. Handel and Bach utilised the Minuet form in their Suites, and Handel often finished the Overture of his Operas, etc., with one; perhaps the best known instance being the Minuet in "Samson."
- (b) As a genius in painting can portray a tragedy in miniature, so Chopin was gifted in expressing a great depth of emotion in a few bars of music, as this prelude exemplifies.



FELDMAN'S

THIRTEENTH GREEN BOOK
OF SOLO CORNET PARTS OF
THE SEASON'S SONG SUCCESSES
AS ISSUED TO MEMBERS OF THE FELDMAN BAND JOURNAL

PRICE
6d.

PRICE
6d.

CONTENTS :—

	Brass Band (20)	Brass and Reed Band (30)	Extra Parts Each
	s. d.	s. d.	
I LOST MY HEART IN HEIDELBERG (Fox-Trot and Two-Step)	2 6	3 9	2d.
WHEN THE REST OF THE CROWD GOES HOME (Waltz)	2 6	3 9	2d.
*CAN'T WE TALK IT OVER (Intermezzo Fox-Trot)	2 6	3 9	2d.
LAWD, YOU MADE THE NIGHT TOO LONG (Slow Fox-Trot)	2 6	3 9	2d.
LEAVE ME ALONE WITH MY DREAMS (Fox-Trot)	2 6	3 9	2d.
RIO DE JANEIRO (One-Step and March)	2 6	3 9	2d.
GOOD NIGHT, LITTLE GIRL, GOOD NIGHT! (Fox-Trot)	2 6	3 9	2d.
MANY HAPPY RETURNS OF THE DAY (Waltz)	2 6	3 9	2d.
WHEN WE WENT STROLLING ROUND THE TOWN (6/8 One-Step)	2 6	3 9	2d.
FOR YOU (Valse Lente)	2 6	3 9	2d.
DIXIELAND SELECTION OF JAZZ CLASSICS	6 0	9 0	4d.
Including :—Dinah, Alexander's Ragtime Band, Back Home in Tennessee, The Sheik of Araby, etc., etc.			
SHAMROCKLAND SELECTION of Popular IRISH SONG SUCCESSES	6 0	9 0	4d.
Including :—Mother Machree, When Irish Eyes are Smiling, It's a Long Way to Tipperary, A Little Bit of Heaven, etc., etc.			

* Theme Song in Talking Film

All the above Hits HAVE BEEN FIRST RECEIVED BY THE FELDMAN BAND JOURNAL
MEMBERS OF
(THE GREATEST VALUE-FOR-MONEY PROPOSITION IN BANDLAND)

Write or call for Particulars

JOIN THE FELDMAN JOURNAL AND GET THE HITS REGULARLY!

B. FELDMAN & CO., 125, 127, 129 Shaftesbury Avenue, London, W.C. 2



ACTION COLOUR PHOTO
BY PHOTOCHROM CELESQUE PROCESS

This Way to the Palace!

Trains
every few
minutes

**SOUTHERN
ELECTRIC**

Cheap
Return
Fares

CHEAP DAY RETURN TICKETS DAILY TO

THE CRYSTAL PALACE

by ALL TRAINS* from

LONDON BRIDGE 1/-	VICTORIA 1/-
HOLBORN VIADUCT 1/-	ST. PAUL'S 1/-
WATERLOO 1/1	

Also from numerous S.R. Suburban Stations.
Bookings also to PENGE EAST and PENGE WEST
*(Weekdays after 9.30 a.m. Sundays and Bank Holidays all day)

6d

Quickest Way Home!
CHEAP SINGLE TICKETS to LONDON (VICTORIA, LONDON BRIDGE
and HOLBORN VIADUCT) available at Intermediate Stations

6d

Save Time and Money by

SOUTHERN ELECTRIC

7. Overture - - - - - " Rienzi " - - - - - - - - - - - *Wagner.*

This Overture is so well known to the public that it needs no words of introduction, but it is presented here in a new guise, and it is in this respect that special attention is called to it. Music of heroic character is particularly suitable for a brass band, and probably no piece adapted from the Orchestral domain has more technical difficulties for a brass band to overcome than the present example.

(ST. HILDA'S BAND. Conductor: J. OLIVER)

8. Offertoire - - - - - Andante in G - - - - - - - - - - - *Batiste*

This placid and well known Offertoire affords a complete and gratifying contrast, both to the foregoing Minuet and the Overture, and it will undoubtedly be appreciated for its devotional content and pure melody.

9. Chorus from the " Messiah " - " Hallelujah " - - - - - - - - - - - *Handel*

This grand Chorus was said to have electrified the audience last year, and it need only be stated now that it is included this year by urgent request.

10. Tone Poem - - - - - " Labour and Love " - - - - - - - - - - - *P. Fletcher*

This Tone Poem illustrates in music a struggle between the opposing powers of " Contentment " and " Avariciousness," ultimately the former (Labour and Love) prevailed through the potent influence of a woman's love for her husband and her appeal on behalf of their children. " Labour and Love " is included in this evening's programme as a tribute to the memory of the Composer, whose recent passing is deeply regretted. This work is the first of the series of high-class, original test pieces specially composed for these Festivals.

(FODEN'S BAND. Conductor: F. MORTIMER)

11. Hymn - - - - - " Abide with Me " (Eventide) - - - - - - - - - - - *Monk*

" Abide with me, fast falls the eventide,
The darkness deepens, Lord with me abide,
When other helpers fail and comforts' flee,
Help of the helpless, O, abide with me."

Hold Thou Thy Cross before my closing eyes;
Shine through the gloom, and point me to the skies;
Heaven's morning breaks, and earth's vain shadows flee;
In life, in death, O Lord, abide with me.

Seats, Prices - - - - - 2/-, 3/-, 4/- and 5/- including tax.

**SEATS CAN BE BOOKED FROM 10 a.m. AT THE CRYSTAL PALACE BOX OFFICE
VISITORS ARE ADVISED TO BOOK EARLY**

SPECIAL NOTICE

For the convenience of visitors to the National Band Festival, arrangements have been made to keep the Post Office open until after the awards have been announced. This information is not available until after the conclusion of the Evening Concert, and those desirous of utilising the facilities referred to will be able to dispatch their communications from the Post Office adjoining the Main Entrance, either by telephone, telegram, or letter.

[Continued from Page 3]

Winning Band	Test Piece	Composer	Judges
1923. LUTON RED CROSS	... "Oliver Cromwell" H. Geehl H. Geehl, Lt. Bilton, H. Brian
1924. ST. HILDA	... "On the Cornish Coast" H. Geehl H. Geehl, J. H. Carter
1925. MARSDEN COLLIERY	... "Joan of Arc" Dennis Wright	... D. Wright, Lt. Hoby
1926. ST. HILDA	... "An Epic Symphony" Percy Fletcher	... H. Bath, J. Brier
1927. CARLISLE ST. STEPHEN'S	"The White Rider"	... Dennis Wright	... E. Dunn, H. Geehl
1928. BLACK DYKE	... "A Moorside Suite" Gustav Holst	... Sir G. Bantock, H. Geehl, C. Jenkins
1929. CARLISLE ST. STEPHEN'S	"Victory" C. Jenkins H. Brian, C. Jenkins, Dr. T. Keighley
1930. FODEN'S MOTOR WORKS	"Severn Suite" Sir Edward Elgar H. Geehl, T. J. Rees, G. Nicholls
1931. WINGATE'S TEMPERANCE	"Honour and Glory" Hubert Bath	... H. Bath, G. Mercer, C. Ward

The most elaborate arrangements are made in the conduct of the Festival to ensure every band getting fair play and equal consideration, and the vast proportions to which this day of days for Brass Bands has grown, and continues to flourish, is the best kind of compliment that can be paid to the Director and his Staff for the efficiency and straightforward conduct of their organisation.

The Great Concert of Massed Bands is, perhaps, the most attractive item of the day's crowded events, and thousands of visitors come to the Festival, year after year, so as not to miss these inspiring performances.

This year's programme, which will be found on page 14, is very imposing, and the rendering of the "Hallelujah Chorus" by the Massed Bands is something that can never be forgotten.

Mr. J. Henry Iles, the Director and Founder of this Festival, has conducted the Massed Bands since 1900.

Visitors are strongly recommended to get their tickets for the Massed Bands Concert *during the day* to avoid the rush and frequent disappointment which is likely to arise through leaving it too late.

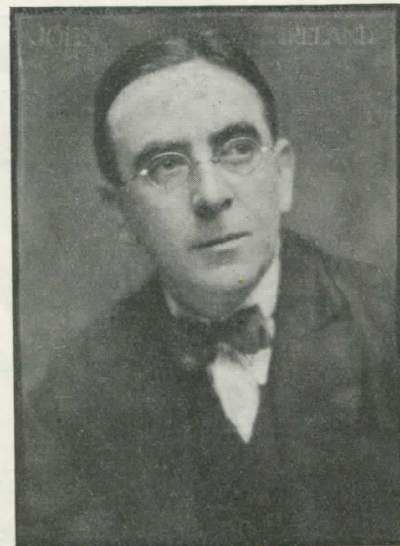
DR. JOHN IRELAND

THE many distinguished musicians who have written works expressly for the medium of the brass band, have now been followed by Dr. John Ireland, acknowledged as one of the most significant of the modern school of British composers.

Dr. Ireland has a comparatively small number of published works, but they are of such an exceptionally high artistic merit that they have earned for the composer an enviable reputation. He is a sincere student of English poetry, and has written over seventy songs, set to the words of the finest poets:—John Masefield, A. E. Housman, Aldous Huxley, Thomas Hardy and others. His setting of John Masefield's "Sea Fever" has achieved enormous popularity, while the symphonic rhapsody, "Maidun" (which made its first appearance in 1921), and "The Forgotten Rite," an earlier work, both for orchestra, strengthened his already sound repute as one of the most original and virile of our present composers.

His concerto for piano and orchestra, first given in 1930 at the Queen's Hall Promenade Concerts by Miss Helen Perkin and the B.B.C. Orchestra, Sir Henry Wood conducting, has already received ten performances in this country—an unusual number for a British work of this magnitude. Several important Chamber works, a highly-wrought sonata and sonatina for piano, and a large number of characteristic piano pieces constitute the rest of his published output.

Before he ever commenced to write the "Downland Suite," Dr. Ireland was fully cognisant of the inherent



JOHN IRELAND

(Copyright Portrait by Herbert Lambeth, Bath)

brilliance and also the sombre splendour of the brass band, and these qualities have been completely exploited in the Suite.

A. M.

YOUR ENTERTAINMENT VALUE

THERE is all the difference in the world between the two kinds of applause—the “polite” sort and the “spontaneous” variety!

Some “superior” people pretend to be unaffected by this form of demonstration on the part of their audiences—but are they *really*? It is very doubtful whether there exists a man who does not feel a tremendous wave of satisfaction at the first crash of a really spontaneous and hearty burst of clapping.

It means so much to a bandmaster or conductor. He knows at once that he has got under the skin of his audience—that the majority of the people listening to his band have the same ideas as he as to what is good in music. And, boiled down into a hard commercial fact, that means return bookings, with the logical sequence of more money!

A Problem . . .

A vast amount of brain-power has been used up in the search for a sure method of getting a “good hand.” A phrenetic style of conducting and a colossal chord at the end of a number are not the same certainties as they used to be. The public are getting wiser and more difficult to please as years go on.

. . . And its Solution

But there are two things that have to be studied by those who aim at popularity. One is variety in the programmes, and the other is variously known as “pep,” “snap,” “vim,” etc.

“Pep” is just a matter of training—and the use of percussion instruments. The main reason why drums have been such strangers to brass bands in the past is the idea that their tone does not blend with that of an all-brass combination.

But those days are over. The drums now being built by the leading British makers *can be adjusted to blend with every type of band in the world!* The present-day snare drum gives four tones—four distinctly different tones—merely by the use of one or both of two small levers. And the modern method of tensioning provides a universal choice of tone-quality. Drum tone used to be a matter of brute strength and the state of the weather. But not to-day.

Programme Variety

When making up a programme, does your mind dwell on your library—or do you imagine yourself as one of the audience?

It will pay you to develop the second idea. There are many numbers that you yourself, as a musician, detest. But, as a member of the public, you will know that these tunes are still wanted. They *have* to go in now and then.

There are so many compositions at your disposal that it would seem an easy matter to compile programmes containing plenty of variety. But, here again, you must think as the crowd thinks. A programme may be excellent from the musician’s point of view, but what about its *entertainment value*?

The percussion section will help you tremendously here. The vibraphone is a new tone-colour and already a firm favourite with every audience. It is a

(Continued on page 20).



**Get More Applause This Way!
Applause brings return dates—
and More Fees!**

WHEN you are on the concert platform it’s the entertainment value that counts. How much applause you are able to draw from the large audience.

If you are competing at the Championship contest you probably have little need to worry over tonal qualities. There are other ideas which, added to the present ability of the Band, will increase its attractiveness a hundredfold.

Some of the most go-ahead brass bands have for some time derived great profit from their percussion section—a section consisting of a good deal more than just “drums.”

While they are in London, Bandmasters, Band Secretaries and Drummers should make a special point of getting further information on this vitally important subject. It is simply a question of how to increase the popularity and drawing power of your band.

Full details and advice, given willingly and without the slightest obligation, at the Premier Drum Company, Ltd.’s . . .

STAND No. 13



Where there will also be some entirely new instruments on view—instruments ideally suited for brass bands.

A copy of the just published Premier Book of Drums has been reserved for every competing band. Make sure of getting this invaluable reference book.

Announcement of the Premier Drum Co., Ltd., 64 Berwick Street, drum makers to the B.B.C., The London Symphony Orchestra, Jack Hylton’s Band, Jack Payne’s Band, and most leading drummers.

**★ Applause brings return dates . . and
more fees !!**

NATIONAL BANDS' FEDERATION

HAVING been elected first President of the National Bands' Federation, I take this opportunity of pressing its claims upon all Band Associations throughout Great Britain. It is a great thing to possess a National representative body with a central headquarters—a body able to deal quickly and efficiently with all matters affecting the wider and more national aspects of our Band life.

We are essentially a FEDERATION OF ASSOCIATIONS, our aim being to consolidate and co-ordinate the work of all existing Amateur Band Associations and to link all together in one vast movement for the betterment of our conditions and the improvement of our musical and social status.

It is a truism that "Unity is Strength." This fact has been recognised for many years by most of our public movements, amateur and professional, but only recently and after much pioneering by a few enthusiasts have we achieved our own National body in the Band world.

The National Bands Federation was brought into being as a result of a Conference of individual Bands and Bands Associations representatives, held in London in May, 1931, when it was distinctly laid down that the control of the National Body should be vested in the hands of the elected representatives of Bands' Associations and individual interests must be excluded from its deliberations.

Already the National Federation has been of service in the formation of new Associations, and it is with the object of linking all BANDS for their mutual benefit that I appeal to BANDS not already in membership of their local Associations to take steps to join without delay, for as units, Bands may fail in their enterprise, but as a united body they are in a position to present a strong appeal.

I feel it is not necessary for me to ask BANDS ASSOCIATIONS to give the closest possible consideration to the question of linking up under the National Bands Federation. The support obtained by working in co-operation with neighbouring Associations and the knowledge that matters of vital importance await consideration, should appeal to all Associations having the interest of Bands in their charge. Furthermore, the knowledge that your Bands are represented in the NATIONAL movement is a big incentive to Bands not already in membership to join your Association.

I cordially invite the assistance and co-operation of all Associations in this great work. Let us present a united body and a strong front to all comers.

I am confident this movement makes for real progress along harmonious lines, and I invite you to communicate, without delay, with the Honorary Secretary, Mr. A. JACKAMAN, 73 Grosvenor Road, Belvedere, Kent, who will be pleased to forward a copy of the rules and full information.

Yours in the advancement of our Cause,

H. FAIRCHILD HUXTABLE,
President.

LIST OF EXHIBITORS IN SOUTH NAVE

- ARMY & NAVY SUPPLY STORES,
118/120 Praed Street, Paddington, W. 2.
- BEEVERS,
26 Aldermanbury, London, E.C. 2.
- BESSON & Co., LTD.,
196/8 Euston Road, London, N.W. 1.
- BOOSEY & HAWKES, LTD.,
295 Regent Street, London, W. 1.
- BOSWORTH & Co., LTD.,
8 Heddon Street, Regent Street, London, W. 1.
- CAMPBELL CONNELLY & Co., LTD.
10/11 Denmark Street, Charing Cross Road,
W.C. 2.
- CHAPPELL & Co., LTD.,
50 New Bond Street, London, W. 1.
- FELDMAN & Co.,
125 Shaftesbury Avenue, London, W.C.
- HULL, J. P.,
39 Glebe Road, Bromley, Kent.
- DUCKWORTH, JOSHUA, LTD.,
Manifold Printing Works, Colne, Lancs.
- KEITH PROWSE & Co., LTD.,
159 New Bond Street, London, W. 1.
- LAWRENCE WRIGHT MUSIC Co.,
Denmark Street, Charing Cross Rd., London,
W.C. 2.
- PHILPOT, A. M.,
354 Beech Hill, Luton, Beds.
- PREMIER DRUM Co., LTD.,
64 Berwick Street, Oxford Street, W.1.
- QUICKFIT PUBLISHING Co.,
16 Jutland Avenue, Rochdale.
- REYNOLDS, T., SENR. & SONS,
43 Chapel Street, Salford, Manchester.
- TOMKINS, F. & SON,
71 Palmerston Road, Northampton.
- UNIFORM CLOTHING & EQUIPMENT Co., LTD.
10/11 Clerkenwell Green, E.C.1.
- WRIGHT & ROUND,
34 Erskine Street, Liverpool.

(Continued from p. 19).

very easy matter to score a solo for this instrument in a selection, intermezzo, etc.—just a few minutes' work.

A xylophone solo, too, always puts you on good terms with the "crowd," and they love to hear the chimes.

The new chimes have eighteen chromatic bells, arranged "piano-fashion." You are no longer tied to the key of E flat! Two mallets may easily be used, and you will at once think of the many standard melodies that will become "something new" when played in this way, harmony notes being filled in with the left hand.

Without a doubt, the percussion section, equipped with modern instruments, adds colour to your band. And it goes a long way towards solving the problem of "Entertainment Value."

Two very important matters, you will agree!

ENGAGEMENTS HAVE NOW BEEN COMPLETED FOR THE

CRYSTAL PALACE GRAND CONTINENTAL CIRCUS

Commencing

BOXING DAY, DECEMBER 26th

THE PROGRAMME WILL INCLUDE

THE MOST POPULAR CONTINENTAL ARTISTES

MANY OF WHOM WILL BE APPEARING IN ENGLAND FOR
THE FIRST TIME

The Kennel Club's 71st Open Championship Show

Wed. & Thurs., OCTOBER 5th & 6th

THE PREMIER DOG SHOW OF THE
WORLD

2524 dogs of 78 different varieties

Open first day 10-8, second day 10-6

The Crystal Palace Grand International Show of Poultry, Pigeons and Rabbits

NOVEMBER 15th, 16th and 17th

THE WORLD'S CLASSIC SHOW

Over 12,000 Exhibits on view

CRYSTAL PALACE SPEEDWAY

LEAGUE MATCHES
SATURDAYS at 3.30

October 8th

PALACE v. BELLE VUE
(Manchester)

and

PALACE v. KANGAROOS

(Kangaroo's Team: DICK CASE, BILLY LAMONT, VIC
HUXLEY, FRANK ARTHUR, DICKY SMYTHE)

(Stand Seats 10d.)

October 15th, Final Meeting

PALACE v. STAMFORD BRIDGE

Admission 1/6 Children 6d.

Combined Tickets Admission and
Covered Stand 2/4

ALL THE WORLD LOVES A GREAT SONG
HERE IT IS!

MARTA

THE RAGE EVERYWHERE. ANOTHER "AUF WIEDERSEHEN." BRASS & MILITARY PARTS RUSHED THROUGH SPECIALLY FOR THE BAND FESTIVAL. Special Price 1/6 Per Set (BRASS or MILITARY)

OTHER BIG SONG HITS:

AUF WIEDERSEHEN
SING A NEW SONG

THE CLOUDS WILL SOON ROLL BY
DAY BY DAY

WHEN THE BAND GOES MARCHING BY

THE GREATEST MARCH SONG THIS YEAR

Prices: BRASS 2/6 MILITARY 3/9 (Less 10% for day of contest only)

MEET THE FAMOUS POPULAR SONG WRITERS

AT THE LAWRENCE WRIGHT STALL TO-DAY IN PERSON

HORATIO NICHOLLS
JOS. G. GILBERT

NOEL GAY

HARRY LEON

LESLIE SARONY
AND LEO TOWERS

EVERY BANDSMAN SHOULD TAKE HOME OUR

9TH SOLO CORNET BOOK

CONTAINING 32 OF OUR GREATEST SONG HITS

PRICE 6d. NET

IF YOU WANT YOUR BAND TO PLAY POPULAR MUSIC Get your Band Secretary to fill in his Name and Address in the space below and we will forward you complete particulars of our Brass and Military Band Club. New subscribers receive parts of our Twelve Latest Hits immediately on joining the club. For the Moderate Sum of 2 gns. you receive music to the value of over £6 over the period of a year

SPECIAL DISCOUNT OF 10% ON ALL SUBSCRIPTIONS FOR THE DAY OF THE CONTEST ONLY

Name of Secretary..... Parts required.....

Name of Band.....

Address.....

THE LAWRENCE WRIGHT MUSIC CO.,

19 Denmark Street, Charing Cross Road, London, W.C.2

'Phone: TEMPLE BAR 2141 (5 lines)