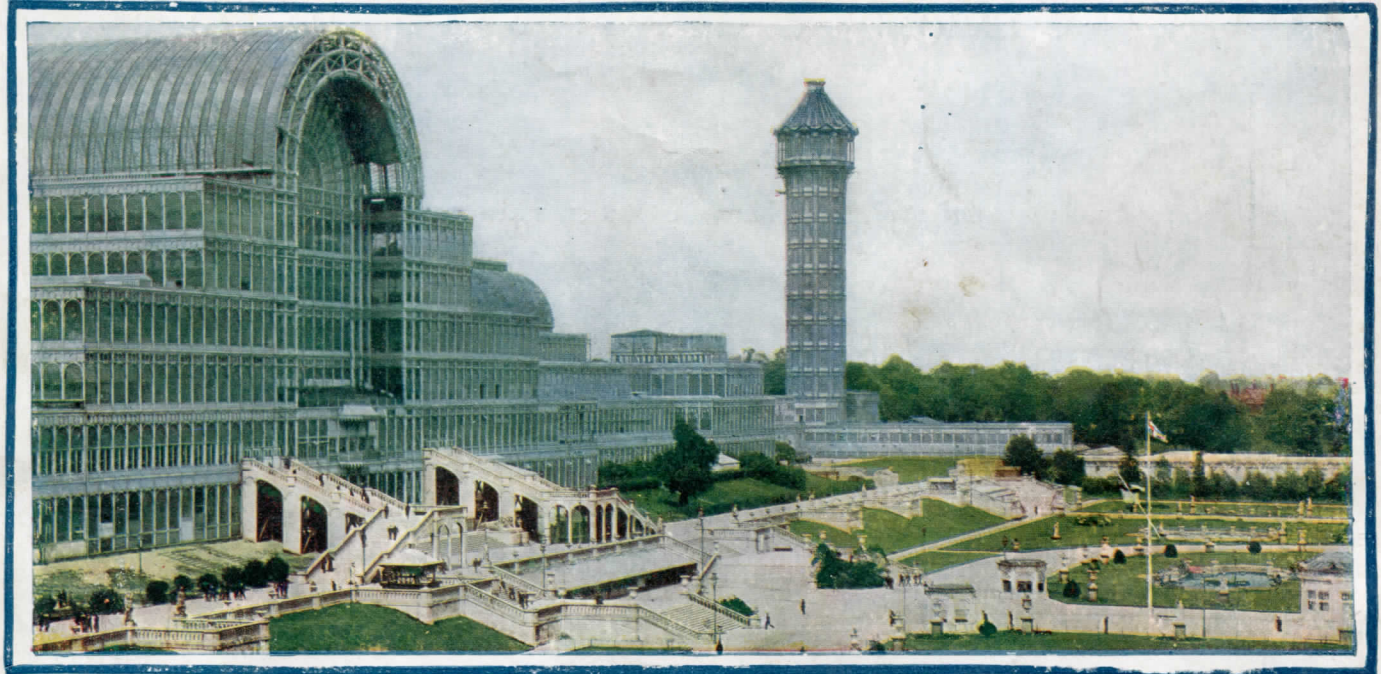




THE 28th ANNUAL BAND CONTEST



being the 33rd Anniversary of the
GREAT NATIONAL BAND FESTIVAL

*Programme & Souvenir
of the
Crystal Palace*



OFFICIAL PUBLISHERS THE PHOTOCHROM CO. LTD., ROYAL TUNBRIDGE WELLS, KENT, EXCLUSIVE COPYRIGHT

FULL LIST OF BANDS

VISIT THE "DALLAS"
STAND AT CRYSTAL PALACE

COMPARE THESE PRICES!

Cornets from £3 - 0 - 0

Tenor Horns „ £5 - 5 - 0

Baritones „ £6 - 6 - 0

Full range of all brass band instruments always in stock.

PAY AS YOU PLAY

The Dallas Deferred Payment Scheme is the most simple in existence. Write for particulars.

Drums, accessories, and all effects in
_____stock_____

Plating and repairs at keen prices.

POPULAR 2/- TUTORS

"ORD HUME" SERIES

Baritone, B B Flat Bass, E Flat Bass, Euphonium, Glockenspiel and Xylophone, G Bass Trombone, Tenor Horn.

Publishers of Dallas Famous Books of Solos for Cornet, Clarinet, Euphonium, etc., etc. Send for Lists.

JOHN E. DALLAS & SONS, LTD.

6-10 BETTERTON STREET

DRURY LANE, LONDON, W.C. 2



CRYSTAL PALACE

SIR HENRY BUCKLAND

General Manager

THE
**33rd Anniversary of
the Great National
BAND FESTIVAL**

(Being the Twenty-Eighth Band Contest)

SEPTEMBER 30th

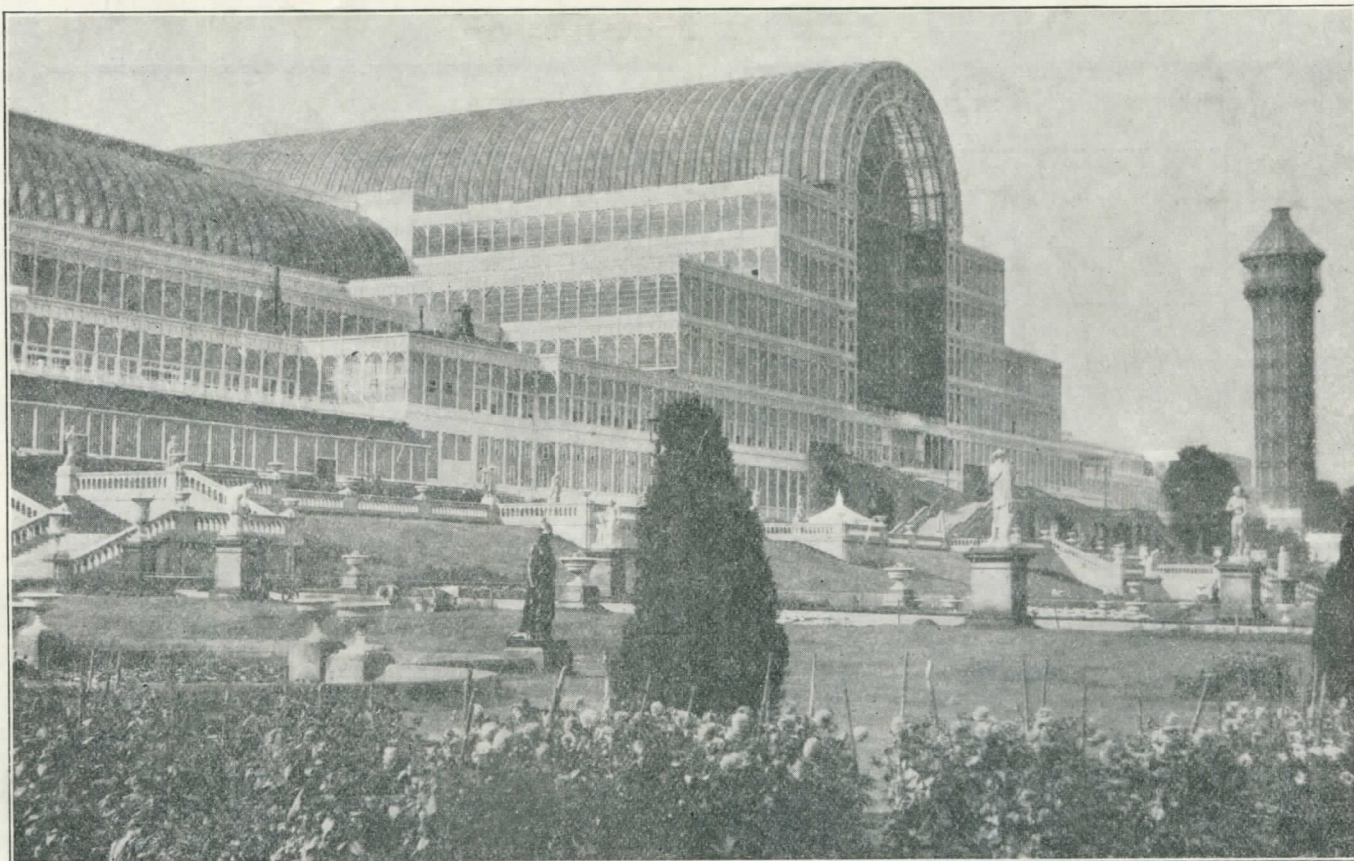
1 9 3 3

Under the Gracious Patronage of
HIS MAJESTY THE KING

Director and Founder

Mr. J. HENRY ILES
(Officier d'Academie Francaise)

COPYRIGHT PUBLICATION
BY THE
PHOTOCHROM CO., LTD.
GRAPHIC WORKS, ROYAL TUNBRIDGE WELLS, KENT



A GLIMPSE OF THE CRYSTAL PALACE FROM THE GARDENS

BESSON

“ Prototype ”

BRITAIN'S

BEST

BAND

INSTRUMENTS

**SINCE
1837**

**USED BY A MAJORITY OF THE
BANDS COMPETING HERE TO-DAY**

The Great National Band Festival

THE NATIONAL BAND FESTIVAL
WAS FOUNDED IN 1900 BY MR J. HENRY ILES

1900—1933

1900—"Winners, Denton Original!"—I can still hear the sonorous voice of the Founder announcing the adjudicators' awards. What excitement! What a crowd! What wonderful playing!

Thirty-three years ago, then a keen young bandmaster anxious to acquire musical knowledge, I secured an inclusive rail and admission ticket at London Bridge Station and journeyed to Sydenham, where I found many of my associates, who, like myself, were visiting the first of the great Festivals at the Crystal Palace in order to see and hear the crack bands from the North. Recalling that memorable occasion, I again seem to see Mr. W. Rimmer, the late Mr. J. Gladney, Mr. A. Owen and other stalwarts directing Irwell Springs, Wingate's, Besses o' th' Barn and a dozen or more famous in those far-off days, in an arrangement of one of Sir Arthur Sullivan's works.

The playing enthralled me; I was thrilled; I marvelled at the performance of those working men musicians. They were a hefty lot and troubled little about appearance or deportment. Most of the bands, I remember, played in shirt-sleeves and stood in square formation. It was my first introduction to Mr. J. Henry Iles, the Founder and Director of the world's most famous of musical Festivals. I was favourably impressed with him, little dreaming in the years to come I should be privileged to participate in the great work he had undertaken in the welfare of amateur brass bands.

I have attended many gatherings at the Crystal Palace since the inception of the Festival of Festivals, and it is not surprising that certain matters connected with subsequent competitions stand out vividly in one's memory, as, for instance, the magnificent win of Besses o' th' Barn in 1903, the marvellous cornet-playing of Mr. W. Paris Chambers at the evening concert. On that occasion, I recall the veteran Mr. Cope, then wearing a beard, conducted the massed bands in a couple of numbers.

Then I am reminded of the big surprise of 1912. The Concert Hall had been uncomfortably crowded from mid-day until St. Hilda's Colliery Band mounted the stage. St. Hilda's were an unknown quantity, and at least half the audience made for the refreshment bars, obviously not interested in the band destined to be five times winners of the Thousand Guinea Trophy. The following year an original selection, from the pen of the late Percy Fletcher, was introduced. "Labour and Love," the Test Piece, was not too well received by some of the critics, but Irwell Springs gave a magnificent performance and were declared champions. A halt was called in consequence of the Great War, and until 1920 the Bandsmen's Festival was suspended. Incidentally, the memorial tablet, the generous gift of Mr. J. Henry Iles, in the front of the Orchestra, is a token to the memory of the great army of amateur bandsmen who made the supreme sacrifice for their King and Country.

To Southerners, like myself, Luton's great win in 1923 is worthy of mention. Space will not permit mention of subsequent Festivals, but it is safe to say that each of the bands winning the Trophy may be regarded as worthy champions of the respective competitions.

As in other activities, changes have taken place. Instead of "arrangements" of well-known operative works, the test pieces to-day are original compositions. The Symphonic Prelude, "Prometheus Unbound," is from the pen of the distinguished composer, Sir Granville Bantock, an ardent supporter of the brass band movement. Other well-known men who have provided test pieces for the National Band Festival, include Sir Edward Elgar, Gustav Holst, John Ireland, Percival Fletcher, H. Geehl, Denis Wright, Hubert Bath, Cyril Jenkins, etc. To-day, the bands are required to play in concert formation, and it is a condition of entry that uniforms must be worn. All these matters are for the betterment of our amateur bands.

It should not be taken for granted that Mr. J. Henry Iles' interest in the brass band movement is confined to the National Band Festival, for I recall his great Absent-minded Beggar Concert in 1900, at the Royal Albert

Continued on Page 18

With their usual enterprise, the National Sunday League have arranged for the Band winning the Championship and Thousand Guinea Trophy to play on Sunday, October 1st, 1933, at the Finsbury Park Empire

NATIONAL BRASS BAND CLUB

(Incorporating the League of Bands' Associations)

Invites Individuals, Bands and Associations to join their respective sections and assist in the great work now being carried on by the Club on their behalf.

The N.B.B.C. has given Brass Bands very valuable assistance and support since its formation in 1925 and is now in an excellent position, having the hearty and unselfish support of the leading men in the movement. Call at the Club Room in the North Nave TO-DAY and obtain full particulars.

J. H. KICHENSIDE

Headquarters
Kingsway Hall
London, W.C.2

Hon. Secretary

The BANDSMAN'S COLLEGE OF MUSIC

Patron :

The Right Honourable THE EARL OF DERBY, K.G., G.C.B., G.C.V.O.

President :

SIR GRANVILLE BANTOCK (M.A., Mus.D., Dir. of Mus., Sch. of Mus., Mid. Inst. Sch. of Music).

Vice-Presidents :

SIR HAMILTON HARTY (Mus.D., T.C.D. & Vict. F.R.C.M.)

DR. T. KEIGHLEY (Mus.D., F.R.C.O., Hon. F.R.M.C.M.)

MR. W. RIMMER

MR. J. H. ILES

MR. G. HAWKINS

MR. S. COPE

MR. W. HALLIWELL

SIR HENRY J. WOOD (Mus.D., F.R.A.M. & F.R.C.M.)

DR. J. F. STATON (Mus.D., F.R.C.O., L.R.A.M.)

MR. J. A. GREENWOOD

ALDERMAN W. MELLAND

The college was inaugurated as the National Institution of the Brass Band Movement by bandsmen of wide experience and repute.

OBJECTS : To create and encourage an incentive for serious and systematic study amongst bandmasters and bandsmen and to induce them to attain a much higher standard of proficiency.

EXAMINATIONS—Two each year

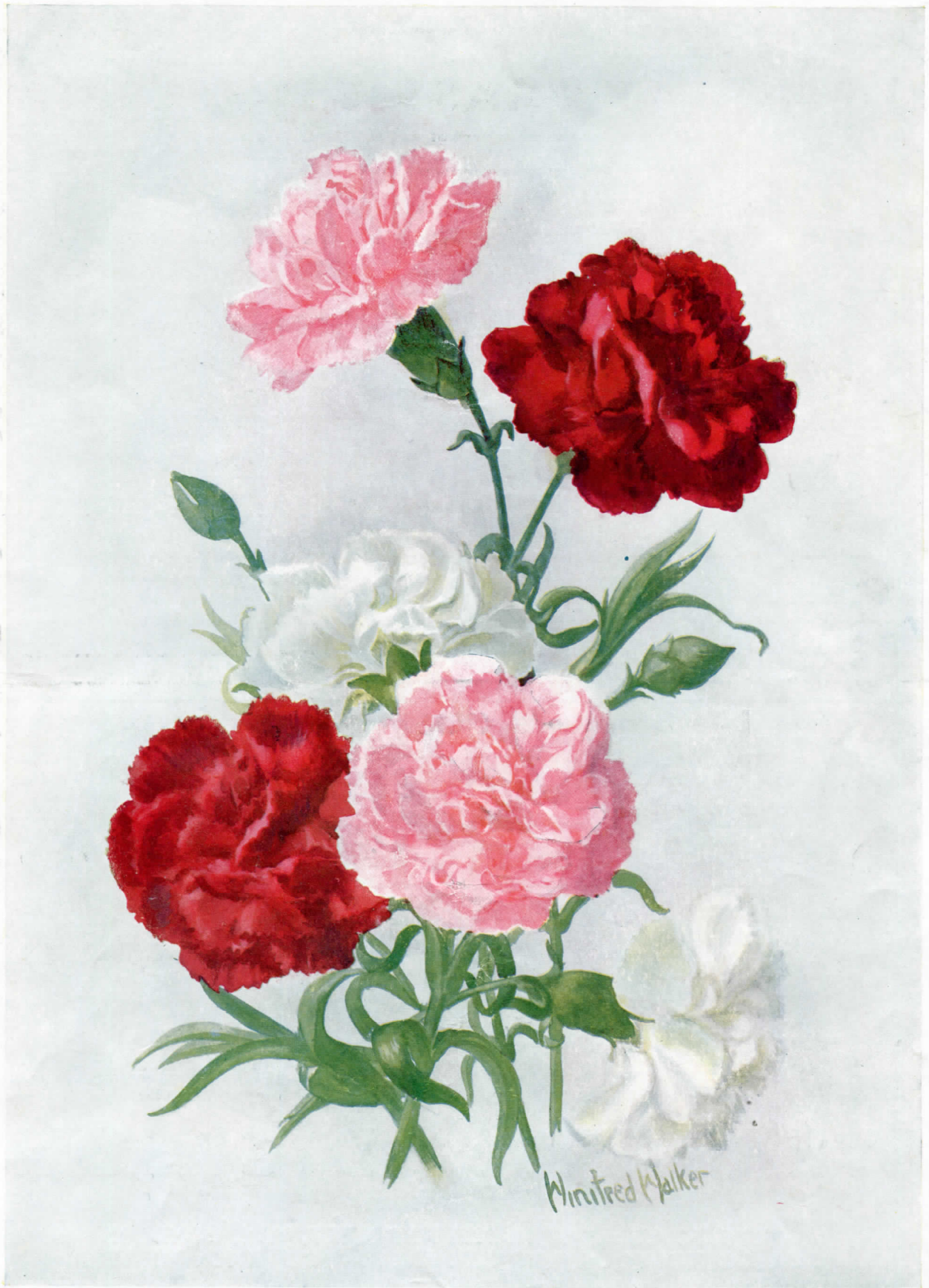
PRELIMINARY EXAMINATIONS

Advancing in four grades from Elementary (beginners) to the preparatory for the diploma Examination. Provincial centres have been arranged in Birmingham, London and Bristol. Chief Centre, Manchester. Additional centres in due course.

EXAMINATION FOR THE BANDMASTER'S DIPLOMA

This serves to test and certify the qualifications of a bandmaster in accordance with the standard of the college. Successful Candidates are entitled to append to their names the letters "B.B.C.M." (Bandmaster, Bandman's College of Music.)

Syllabus and full particulars from the secretary : H. COLLIER, 61 RUTLAND ST., MANCHESTER, 15



Photocolor copyright

CARNATIONS

BY WINIFRED WALKER



DRUMS YOU MUST HAVE

DO AS
THE
BEST
BANDS
DO



OUR NO. 47.
USED BY LEADING BANDS
FOR NEARLY 30 YEARS

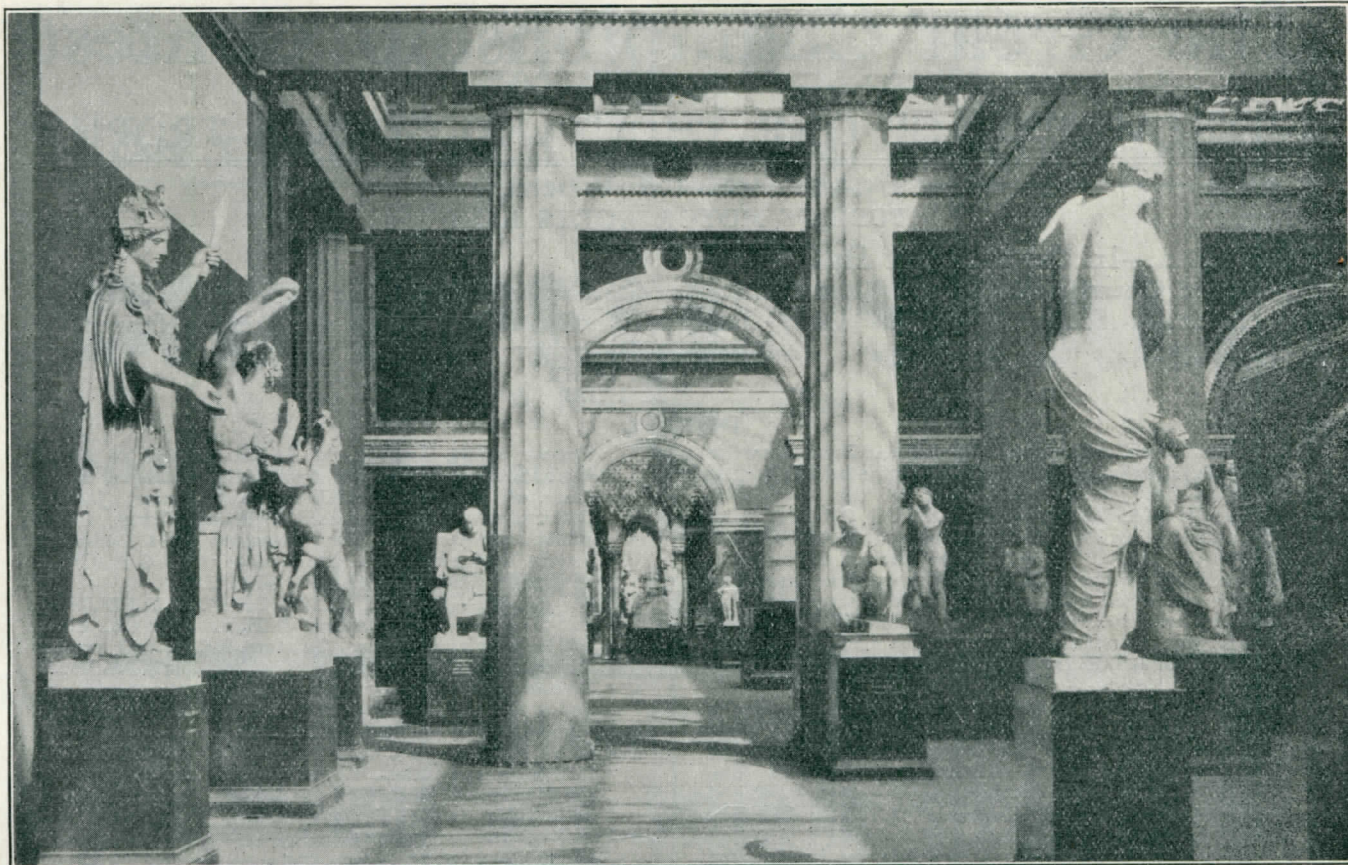
COME TO—

WEAVER & DICKSON

MAKERS SINCE 1882

WRITE TO US AT 17 MANETTE STREET, W. 1, LONDON
OR GO TO YOUR LOCAL DEALER—YOU KNOW HIM

WE WILL HELP HIM TO SATISFY YOU



SUNSHINE AND SHADOW IN THE STATUARY COURT, CRYSTAL PALACE

The Mecca Cafes

CATERERS BY APPOINTMENT TO THE CRYSTAL PALACE

Head Offices, Stores, etc.: **76 SOUTHWARK STREET, S.E. 1**
LONDON:—CAFES AND RESTAURANTS

54 Gresham Street.
 Telegraph Street.
 101 Leadenhall Street.
 145 Cannon Street.
 Broad Street.
 14 Walbrook.
 49 London Wall.

50/51 Fore Street.
 31 Great St. Helens.
 75b Queen Victoria Street.
 3 Gresham Street.
 9/10 Mark Lane.
 23 Coleman Street,
 1 Whittington Avenue

69/70 Mark Lane.
 139 Cannon Street.
 King's Arms Yard.
 140 Cheapside.
 24 Lime Street.
 21 St. Mary Axe.
 15 Copthall Avenue.

68 Basinghall Street.
 56 Ludgate Hill.
 11a Queen Street.
 11/12 Blomfield Street.
 65/6 Chancery Lane.
 143 Charing Cross Road.
 57 Gracechurch Street.

PROVINCES

BIRMINGHAM

The Station Street Cafe,
 Station Street.
 The Kings Cafe,
 Midland Arcade, New Street.
 The Mecca Cafe,
 Waterloo Street.
 The Cafe Royal,
 Prudential Buildings,
 Corporation Street.

HULL

The Mecca Cafe,
 Prudential Buildings,
 King Edward Street.

CAMBRIDGE

The Mecca Cafe,
 Petty Cury.

SHEFFIELD

The Haymarket Hotel,
 Haymarket.

LIVERPOOL

The Cotton Exchange Cafe
 Ormond Street.
 The Mecca Cafe,
 6 Drury Lane.
 The Exchange Cafe,
 Exchange Flags.
 The Mecca Cafe,
 Clayton Square.
 The Mecca Cafe,
 India Buildings.

BRIGHTON

The Mecca Cafe,
 105 King's Road.

BRIDLINGTON

The Mecca Cafe,
 8/9 Garrison Street.

MANCHESTER

The Mecca Cafe, 37 Cross Street.

ST. ALBANS

The Mecca Cafe, Market Place.

TUNBRIDGE WELLS

The Mecca Cafe,
 44/46 The Pantiles.

HOTELS. THE ROOF GARDEN HOTEL, John Bright Street, BIRMINGHAM. THE HAYMARKET HOTEL, King Street, SHEFFIELD.

SOLE CATERERS AT CRYSTAL PALACE, THE ARSENAL FOOTBALL CLUB, ROYAL OPERA HOUSE DANCES, (COVENT GARDEN), PALAIS DE DANSE (NOTTINGHAM). Also CONTROLLING THE RITZ PALAIS DE DANSE, (MANCHESTER), THE LOCARNO DANCE HALL, (STREATHAM), AND SHERRY'S DANCE HALL, (BRIGHTON), LIDO DANCE HALL, CROYDON, MECCA TOWEL SERVICE, 106/108 BROADWALL, S.E. 1, MECCA DRY CLEANING DEPARTMENT, 76 SOUTHWARK STREET, S.E. 1

The Great Championship Contest

for the
CRYSTAL PALACE ONE THOUSAND GUINEA TROPHY

LAST YEAR'S WINNER
FODEN'S MOTOR WORKS BAND

11.50 a.m.—In the Concert Hall

Grand Championship Brass Band Contest for the Crystal Palace One Thousand Guinea Challenge Trophy and the "Daily Telegraph" Challenge Cup, and other Prizes

Adjudicators:—H. BENNETT
J. BRIER
H. HIND

PRIZES

FIRST PRIZE.—The Championship of Great Britain and the Colonies, the winners of which will be the holders for the year (under special regulations) of the CRYSTAL PALACE NATIONAL CHALLENGE TROPHY, of the value of One Thousand Guineas, and a CASH PRIZE OF FIFTY POUNDS, and Messrs. BESSON & Co., LTD., 196/8 Euston Road, London, N.W. 1, sole manufacturers of the celebrated "Prototype" Band Instruments, will present one of their famous "New Standard" Tenor Slide Trombones, handsomely silver-plated and embellished, complete in attaché case, valued at TWENTY POUNDS (£20), and Messrs. WRIGHT & ROUND, 34 Erskine Street, Liverpool, will present one *Brass Band News* Gold Medal to the Resident Bandmaster, value FOUR GUINEAS, and Messrs. JOSHUA DUCKWORTH LTD., Manifold Printing Works, Colne, Lancs., will present The Champion 1934 Combined Journal with extra parts, to the value of TWO POUNDS TWELVE SHILLINGS AND SIXPENCE.

Each Member of the Band, including the Bandmaster and Secretary, will also be presented with the CRYSTAL PALACE CHAMPIONSHIP BRONZE MEDAL, with Bar and Clasp.

Members of the Band winning the Trophy for the second time will be presented with the same medal IN SOLID SILVER; and Members of the Band winning the Trophy for the third time will be presented with SOLID GOLD MEDALS.

SECOND PRIZE.—THE DAILY TELEGRAPH CHALLENGE CUP (subject to regulations), value Fifty Guineas, and a CASH PRIZE OF FORTY-FIVE POUNDS, and Messrs. BOOSEY & HAWKES, LTD., 295

Regent Street, London, W. 1, will present a Band Instrument, to be selected from their catalogue, to the value of TWENTY POUNDS, and Messrs. JOSHUA DUCKWORTH LTD., Manifold Printing Works, Colne, Lancs., will present The Champion 1934 Combined Journal with extra parts to the value of TWO POUNDS TWELVE SHILLINGS AND SIXPENCE.

THIRD PRIZE.—A CASH PRIZE OF FORTY POUNDS, and the UNIFORM CLOTHING & EQUIPMENT Co., LTD., 10/11 Clerkenwell Green, London, E.C. 1, will present one Bandmaster's Complete Suit, including Frockcoat, Trousers and Cap, design to be selected by the winner, and also a Set of Gold-bronzed Music Stands, to the total value of SEVENTEEN GUINEAS.

FOURTH PRIZE.—A CASH PRIZE OF THIRTY-FIVE POUNDS, and Messrs. KEITH PROWSE & Co., LTD., of 159 New Bond Street, W. 1, and Messrs. JOSEPH HIGHAM, of 213/215 Great Jackson Street, Manchester, will present One Contesting Cornet, complete in case, class A model, triple silverplated, engraved, of British manufacture throughout, by Joseph Higham, valued at SIXTEEN POUNDS.

FIFTH PRIZE.—A CASH PRIZE OF THIRTY POUNDS, and Messrs. B. FELDMAN & Co., 125 Shaftesbury Avenue, London, W.C. 2, will present one Boosey Bb Cornet "N.V.A." Solbron Valves, triply-plated and engraved, value FIFTEEN GUINEAS.

SIXTH PRIZE.—A CASH PRIZE OF TEN POUNDS, and THE ARMY & NAVY SUPPLY STORES, 118 Praed Street, Paddington, London, W., will present one Complete Bandmaster's Uniform Outfit, comprising Frockcoat, Trousers, Cap and Baton, to the value of FIFTEEN GUINEAS.

1. CHAMPIONSHIP CONTEST

TEST PIECE: "PROMETHEUS UNBOUND" ... *Granville Bantock*

SECTION 1

No.	Band	Conductor	Draw	Result
1.	Baxendale's (Manchester) Works	J. A. Greenwood	5
2.	Black Dyke Mills	W. Halliwell
3.	Bradford City	H. Grace
4.	Brighouse and Rastrick	W. Halliwell
5.	Carlisle St. Stephen's	W. Lowes
6.	Creswell Colliery	J. A. Greenwood	3
7.	Crystal Palace	W. Reynolds
8.	Eccles Borough	J. Dow
9.	Foden's Motor Works	F. Mortimer	1
10.	Hanwell	J. C. Dyson
11.	Harton Colliery	W. Lowes	6

No.	Band	Conductor	Draw	Result
12.	Horden Colliery	J. Foster
13.	Irwell Springs	W. Halliwell
14.	Luton	E. S. Carter
15.	Metropolitan Works	H. Heyes	4
16.	Middlesbrough Borough	J. Wilson
17.	Morris Motors	S. V. Wood
18.	Nelson Old	W. Halliwell
19.	Rothwell Temperance	W. Halliwell
20.	Rushden Temperance	T. Young
21.	Scottish C.W.S.	G. Hawkins	2
22.	Sowerby Bridge	W. Wood
23.	Wingate's Temperance	H. Moss

Admission to Concert Hall TWO SHILLINGS

The Director's Office is in front of the Concert Hall. At "THE BRITISH BANDSMAN" Stand adjoining can be obtained "The Bandsman's Recreation," containing the Conductor's parts of to-day's Test Pieces—Price Two Shillings.

A MUSICAL EXHIBITION By all the Leading Musical Instrument Manufacturers, etc.
WILL BE HELD IN THE SOUTH NAVE See List of Exhibitors, Page 19

The Head Quarters of the National Band Club will be in the Crystal Palace Club room and will be available for members and friends. Mr. J. H. Kitchenside, The Hon. Secretary, will be pleased to welcome them.

BANDMASTERS and SECRETARIES

DON'T MISS THIS GOLDEN OPPORTUNITY

Be sure to call at the

CHAPPELL STALL

"A Rhapsody in Blue"

Where all the Popular Musical Comedy Selections
can be obtained at
Special prices for the Day only

— Published this Day —

A SPLENDID NEW SULLIVAN SELECTION

Consisting of Gems from the Famous Operas arranged by Denis Wright



The 1933 SOLO CORNET BOOK (Wonderful Value)

MAKE YOUR DAY A COMPLETE SUCCESS
By Joining the Chappell Band Club

This Club ensures your being kept up to date with the latest
Marches, Intermezzos, Cornet Solos and outstanding Dance Successes

Better Value Impossible
For 'Twelve Months' Membership

	£	s.	d.
Brass Band 26 parts - - - -	1	10	0
Brass and Reed Band 31 parts - - -	1	15	0
Extra parts, each - - - -		2	6

SIX MONTHS HALF RATE

CHAPPELL & CO. LTD., 50 New Bond Street, London, W.1

11.30 a.m.—In the Theatre

Brass Band Contest for the "Daily Express" Challenge Shield and "The People" Challenge Shield and other Prizes

Adjudicators:—H. GEEHL
T. J. REES

PRIZES

FIRST PRIZE.—THE *DAILY EXPRESS* CHALLENGE SHIELD (subject to regulations) value Fifty Guineas, and a CASH PRIZE OF TWENTY POUNDS, and Messrs. CHAPPELL & Co., LTD., 50 New Bond Street, London, W. 1, will present one Besson Silver-plated and Engraved Bb Tenor Trombone, valued at THIRTEEN POUNDS NINE SHILLINGS, and Messrs. WRIGHT & ROUND, 34 Erskine Street, Liverpool, will present one *Brass Band News* Gold Medal to the Resident Bandmaster, valued at THREE GUINEAS.

SECOND PRIZE.—THE *PEOPLE* CHALLENGE SHIELD subject to regulations, and a CASH PRIZE OF FIFTEEN POUNDS, and Messrs. BEEVERS, 26 Aldermanbury, London, E.C., will present one First-Grade Bandmaster's Suit, valued at TWELVE GUINEAS.

THIRD PRIZE.—A CASH PRIZE OF TWELVE POUNDS, and Messrs. BOOSEY & HAWKES, LTD., 295 Regent Street, London, W. 1, will present one Set of Folding Music Stands, valued at TEN GUINEAS.

FOURTH PRIZE.—A CASH PRIZE OF TEN POUNDS, and Messrs. HENRI SELMER & Co., LTD., 12 Moor Street, Cambridge Circus, London, W. 1, will present one Set of 24 Music Stands, valued at TEN POUNDS.

FIFTH PRIZE.—A CASH PRIZE OF EIGHT POUNDS, and THE LAWRENCE WRIGHT MUSIC Co., Denmark Street, Charing Cross Road, London, W.C. 2, will present one Set of Music Stands, valued at NINE POUNDS,

SECTION 2. GRAND SHIELD CONTEST

(Last Year's Winners: RUSHDEN TEMPERANCE BAND)

Test Piece ...	Band	Conductor	Draw	Result
1. Blythe L.N.E.R. ...	G Ramsden ...	7	2	X1
2. Bolden Colliery Workmen's ...	W. Heap ...	6		
3. Crookhall Colliery Welfare ...	J. A. Greenwood ...		3	
4. Dunlop Works ...	N. Thorpe ...	2		
5. Edmonton ...	W. Tyrrell ...	16		
6. Friary Brewery ...	W. Reynolds ...		4	
7. Great Central & Metropolitan ...	W. Smith ...	4		X
8. Kettering Rifles ...	P. W. Cook ...			
9. Kettering Town ...	J. Woolley ...			
10. Lambeth Borough ...	G. Daley ...	18		
11. Manvers Main ...	A. Yates ...			
12. Pleasley Colliery ...	H. Lambeth ...		5	
13. Ripley United ...	W. J. Saint ...			
14. Skipton ...	H. Moss ...	5		
15. Slathwaite ...	N. Thorpe ...		1	
16. Wallsend United Collieries ...	J. Boddice ...	1		
17. Watford ...	R. Hutchinson ...	17		X
18. Wigston's Temperance ...	C. Moore ...	3		
19. Willesden Town ...	C. McManus ...	15		
20. Wood Green Excelsion ...	W. L. Dolling ...			

11.30 a.m.—In the North Tower Gardens

Brass Band Contest for the "Daily Sketch" Challenge Cup and "The News Chronicle" Trophy and other Prizes

Adjudicators:—T. KEIGHLEY
C. WARD (Newcastle-on-Tyne)

PRIZES

FIRST PRIZE.—THE *DAILY SKETCH* CHALLENGE CUP (subject to regulations), value Fifty Guineas, and a CASH PRIZE OF FIFTEEN POUNDS, and A. M. PHILPOT, 354 Beech Hill, Luton, Beds, will undertake Repairs and Silver-plating to the value of SEVEN POUNDS TEN SHILLINGS.

SECOND PRIZE.—THE *NEWS CHRONICLE* TROPHY (subject to regulations), and a CASH PRIZE OF TEN POUNDS, and Messrs. F. TOMPKINS & SON, 71 Palmerston Road, Northampton, will present one F. Tompkins Bb Cornet (Class "A"), valued at SEVEN GUINEAS.

THIRD PRIZE.—A CASH PRIZE OF EIGHT POUNDS, and Messrs. BOSWORTH & Co., LTD., 8 Heddon Street, Regent Street, W. 1, will present one Set of Eb Tubular Bells, valued at FOUR GUINEAS.

FOURTH PRIZE.—A CASH PRIZE OF SEVEN POUNDS, and Messrs. T. REYNOLDS SNR. & SONS, 43 Chapel Street, Salford, Manchester, will undertake Repairs and Silver-plating to the value of FOUR POUNDS.

FIFTH PRIZE.—A CASH PRIZE OF FIVE POUNDS, and THE QUICKFIT PUBLISHING Co., 16 Jutland Avenue, Rochdale, will present one Set (26) of "Selection" Music Folios, two Gusset Pockets, Eyeletted and Elastic, Gold Embossed Instrumentation Label on side, name of band lettered in gold or silver, bound in waterproof material, valued at TWO POUNDS TWELVE SHILLINGS.

SECTION 3. JUNIOR CUP "A" CONTEST

(Last Year's Winners: FRIARY BREWERY BAND)

Test Piece ...	Band	Conductor	Draw	Result
1. Bedford Trades ...	E. S. Carter ...			
2. Coxlodge Institute ...	G. Snowdon ...		2	X
3. Craghead Colliery ...	J. Smith ...			
4. Croydon Borough ...	E. W. Miles ...			
5. Earlestown Viaduct ...	C. S. Jones ...		8	
6. Falmouth Town ...	T. G. Moore ...			
7. Horsham Borough ...	J. C. Dyson ...			
8. Leyton Borough ...	H. Rundle ...			
9. Lyceet Mission ...	F. Dimmock ...			
10. Manchester C.W.S. Tobacco Factory ...	J. A. Greenwood ...		19	
11. Munn & Felton's Works ...	W. Halliwell ...			X1
12. Newcastle Corporation Tramways ...	W. Farrall ...			
13. Ravensworth Collieries ...	J. Boddice ...			
14. Royal Fusiliers (1st Cadet Batt.) ...	W. Greenwood ...			
15. Rugby Town ...	W. E. Compton ...		5	
16. Sheffield Corporation Tramways and Motors ...	W. Halliwell ...		12	
17. Swanwick Collieries ...	F. Skidmore ...			1
18. Swindon G.W.R.S.E. Union ...	W. G. Cave ...		8	
19. Thorne Colliery ...	P. Stapleton ...			
20. Windsor ...	T. Dooley ...		7	
21. Wolverton Town ...	A. F. Brooks ...			
22. Worksop Borough ...	C. Pressley ...		13	4

11.30 a.m.—In the Dance Hall

Brass Band Contest for the "Daily Mirror" Challenge Cup, the "Pearson's Weekly" Challenge Shield and other Prizes

Adjudicators:—H. MORRIS
G. NICHOLLS

PRIZES

FIRST PRIZE.—THE *DAILY MIRROR* CHALLENGE CUP (subject to regulations), value Fifty Guineas, and a CASH PRIZE OF FIFTEEN POUNDS, and Messrs. JOHN E. DALLAS & SONS, LTD., 6/10 Betterton Street, Drury Lane, W.C. 2, will present one Ivoryite Baton, with heavy 18ct. gold mounting at centre, valued at TWO GUINEAS.

SECOND PRIZE.—THE *PEARSON'S WEEKLY* CHALLENGE SHIELD (subject to regulations), value Fifty Guineas, and a CASH PRIZE OF TEN POUNDS.

THIRD PRIZE.—A CASH PRIZE OF SEVEN POUNDS.

FOURTH PRIZE.—A CASH PRIZE OF FIVE POUNDS.

FIFTH PRIZE.—A CASH PRIZE OF THREE POUNDS.

SECTION 4. JUNIOR CUP "B" CONTEST

(Last Year's Winners: WORKSOP BOROUGH BAND)

Test Piece ...	Band	Conductor	Draw	Result
1. Alderley Edge ...	J. H. White ...			
2. Barnet Town ...	F. Dimmock ...			X
3. Bristol and District N.U.R. ...	H. S. Perry ...			
4. Cardiff Corporation Transport ...	J. Birkett ...			
5. Clayton ...	F. Berry ...			
6. Coventry ...	W. Ellison ...		3	
7. Durham Shakespeare Temperance ...	F. Wakeford ...			
8. Hickleton Main ...	H. Evans ...			
9. House of Dickinson ...	J. C. Dyson ...			
10. Leadgate Mission ...	J. R. Foster ...			
11. Lowerplace ...	W. Eastwood ...			1
12. Morrison Collieries ...	H. Haigh ...			X
13. Newbigin Colliery ...	R. Kirkup ...			
14. Newsome, Ltd., Public Works ...	W. J. Warburton ...			
15. Oakdale Colliery ...	D. Parr ...			X
16. Ripon City ...	H. W. Hill ...			
17. Rowntrees Cocoa Works ...	G. Walker ...			
18. Thornley Colliery ...	E. Kitto ...			4
19. Wheatley Hill Colliery ...	W. R. K. Straghan ...			2

Visitors are strongly recommended to get their tickets for the Massed Bands Concert during the day to avoid the rush and frequent disappointment which is likely to arise through leaving it too late.

In **10** days' time

the "His Master's Voice" records of this evening's concert will be on sale at your "His Master's Voice" dealer's.

The records made of the Band Festival music last year were remarkable for volume, fidelity and tone.

Hallelujah Chorus (Messiah—Handel) "Praise my soul" (Goss); (b) Edwinstone. C2470, 4/- *"Abide with me" (Monk)—Andante in G (Batiste) C2471, 4/-*
Mandora March (Ord-Hume)—Death or Glory March (Hall) C2496 4/-

Hear these wonderful band records!

Retreat and Tattoo. Massed drums and Bugles—"Marching along together." Massed Drums and Fifes, Massed Pipes and Royal Salute—Musical Ride. Massed Trumpets and Mounted Bands—The Death of Gordon—Funeral March from "Othello" (Coleridge-Taylor)—Entry of the Massed Bands. Massed Bands of the Aldershot Command. C2575, 4/-

Torchlight Display ("Soldiers in the Park")—(Speech from "King Henry V" by Henry Ainley)—Excerpts from "Sigurd Jorsalfar" (Grieg) and "Cavalleria Rusticana" (Mascagni). Grand Finale—Entry of Massed Bands ("Le Reve Passe")—"Abide with me"—Epilogue recited by Henry Ainley—Present arms—"God Save the King"—Cheers for H.M. the Queen. Massed Bands of the Aldershot Command. C2576, 4/-



"HIS MASTER'S VOICE"

THE GRAMOPHONE CO., LTD.

98-108 Clerkenwell Road, London, E.C. 1

11.30 a.m.—In the Canadian Building

Brass Band Contest for the "Cassell's" Challenge Shield and other Prizes

Adjudicators:—F. ROGAN
W. J. PARRY JONES

PRIZES

- FIRST PRIZE.—THE CASSELL'S CHALLENGE SHIELD (subject to regulations), value Fifty Guineas, and a CASH PRIZE OF TEN POUNDS.
- SECOND PRIZE.—A CASH PRIZE OF EIGHT POUNDS.
- THIRD PRIZE.—A CASH PRIZE OF FIVE POUNDS.
- FOURTH PRIZE.—A CASH PRIZE OF FOUR POUNDS.
- FIFTH PRIZE.—A CASH PRIZE OF THREE POUNDS.

SECTION 5. JUNIOR SHIELD "A" CONTEST

(Last Year's Winners: LEEK BRITISH LEGION BAND)

Test Piece	"Operatic Bouquet"				Various
No.	Band	Conductor	Draw	Result	
1.	Aldbourne	F. Dimmock	
2.	Altoft's West Riding Colliery	N. Sidebottom	
3.	Barrington Colliery	J. Taylor	
4.	Birtley Ouston "E" Pit	A. G. Ward	
5.	Black Dyke Mills Junior	H. Hepworth	3
6.	Brynmawr	D. J. Stevens	7
7.	Cambridge Town	R. E. Austin	
8.	Caterham	F. Snow	
9.	Chisle Colliery	J. Hamblin	
10.	Corris	D. L. Jones	
11.	Elliott's Metal Co.	H. Tidswell	2
12.	Hayes and Harlington	A. T. Matson	
13.	Hetton	J. W. Richardson	
14.	Ilford (St. John Ambulance)	F. J. Doughty	
15.	King's Heath Olde	E. Stokes	
16.	Paulton	J. B. Yorke	
17.	Redcar Works	A. W. Turner	
18.	Scarborough National Reserve	J. Moulding	
19.	South Moor Colliery	W. L. Turnbull	4
20.	Taf Merthyr Colliery	J. Williams	
21.	Treherbert U.N.S.	J. G. Dobbins	
22.	Walsall L.M.S.	E. Whittington	
23.	Wellingborough L.M.S.	J. Murdin	
24.	Wharfedale Silkstone Colliery	H. Boothroyd	

11.30 a.m.—On the Terrace

Brass Band Contest for the "Iles" Challenge Shield and other Prizes

Adjudicators:—D. ASPINALL
J. PERRIN

PRIZES

- FIRST PRIZE.—THE ILES CHALLENGE SHIELD (subject to regulations), value Fifty Guineas, and a CASH PRIZE OF EIGHT POUNDS.
- SECOND PRIZE.—A CASH PRIZE OF SEVEN POUNDS.
- THIRD PRIZE.—A CASH PRIZE OF FIVE POUNDS.
- FOURTH PRIZE.—A CASH PRIZE OF THREE POUNDS.
- FIFTH PRIZE.—A CASH PRIZE OF TWO POUNDS.

SECTION 6. JUNIOR SHIELD "B" CONTEST

(Last Year's Winners: ALDBOURNE BAND)

Test Piece	"Operatic Bouquet"				Various
No.	Band	Conductor	Draw	Result	
1.	Burton	H. A. Reynolds	
2.	Burslem Imperial	H. Mortimer	3
3.	Canterbury City	W. Burgess	
4.	Crewkerne	C. W. L. Pinney	
5.	Ealing Town	H. Brown	
6.	Erith British Legion	J. C. Dyson	
7.	Glastonbury Town	L. Abram	
8.	Haggerston	J. A. Wood	
9.	Hayward's Heath Town	W. G. Bosley	5
10.	Hugglescote Town	J. Wilcox	
11.	King's Lynn Town	E. Cox	1
12.	Knottingley	S. Marshall	
13.	Leeming Glass Works	T. Forster	
14.	Middlewich Congregational	W. Brady	
15.	Northfleet	J. C. Dyson	2
16.	Sacrison Town	G. Jacobs	
17.	Saltire Subscription	H. B. Hawley	
18.	Stained United Temperance	W. J. Sanders	
19.	Thornton Heath	C. G. Hilliard	
20.	Tilbury Town	L. Nicholls	
21.	Towcester "Studio"	C. F. Brown	4
22.	Tredeggar Workmen's	E. Shaw	
23.	West Chiltington	C. M. Chatfield	
24.	Whyteleafe Village	P. Clarke	

11.30 a.m.—In the School of Art

Brass Band Contest for the "Champion Journal" Challenge Cup and other Prizes.

Adjudicators:—T. EASTWOOD
J. EATON

PRIZES

- FIRST PRIZE.—THE CHAMPION JOURNAL CHALLENGE CUP (subject to regulations) and a CASH PRIZE OF EIGHT POUNDS.
- SECOND PRIZE.—A CASH PRIZE OF SEVEN POUNDS.
- THIRD PRIZE.—A CASH PRIZE OF FIVE POUNDS.
- FOURTH PRIZE.—A CASH PRIZE OF THREE POUNDS.
- FIFTH PRIZE.—A CASH PRIZE OF TWO POUNDS.

SECTION 7. JUNIOR SHIELD "C" CONTEST

(Last Year's Winners: KING'S LYNN TOWN BAND)

Test Piece	"Gems of Melody"				Various
No.	Band	Conductor	Draw	Result	
1.	Barnard Castle	M. Wright	
2.	Blaengarw	W. Jenkins	2
3.	Bream	E. A. Jones	
4.	Campden Town	G. S. Thomas	
5.	Cannock Chase Colliery	G. R. Critchlow	1
6.	Chatham Town	J. Lewis	
7.	Chatteris Town	A. P. Setchfield	
8.	Chichester City	E. D. Shepherd	
9.	Cirencester	G. Churchman	
10.	Coseley	E. Porter	5
11.	Etchingam-Robertsbridge	J. Martin	
12.	Gravel Lane Methodist	W. Bowen	
13.	Hammersmith Borough	J. F. Forse	
14.	Haslemere	O. J. Langridge	
15.	Hooe	H. Smith	
16.	Hook and Odiham	E. Shwyer	
17.	Kidlington	S. Alderman	
18.	Kingsbridge	W. G. Jerwood	
19.	King's Cross	A. C. Lockerby	
20.	King's Dyke and Whittlesey	G. H. Hollis	
21.	Reepham Town	E. T. Ruffles	
22.	Romford	A. V. Creasey	3
23.	St. Stythian's	T. Hubbard	
24.	Second South Essex Company Boys' Brigade	H. J. Hurrell	4
25.	Southampton Albion	A. H. Muddiman	
26.	Thatcham and District	W. Woodward	
27.	Thornton	J. A. Bancroft	
28.	Widdington	A. J. Ashpole	
29.	Wincanton	A. H. Muddiman	

BEEVER'S UNIFORMS

Established over Seventy Years and going STRONGER THAN EVER

If good workmanship, sound cloth, perfect fitting is wanted, then bands have only one choice—a BEEVER UNIFORM. We may be higher in price than others, but we are better, and the best is the cheapest in the long run. Your troubles are over when Beever's supply you. Call at our Stand, don't be had by brag and bounce, get a £1 value for every £1 paid.

BEEVER'S UNIFORMS are worn by Brighouse and Rastrick, this year's Belle Vue winners, and by hundreds of other discriminating bands.

BEEVER'S NEVER LET YOU DOWN

NOTE ADDRESS—

26 Aldermanbury, London, E.C.2
or Brook St., Huddersfield, Yorks.

THE BIG BATTLE OF THE BANDS

The Romantic Story of the Great Band Festival at Crystal Palace

By THOMAS G. MIDDLETON

OUR working men bandsmen, these mighty men of brass and silver, are being driven to the study of the classics and poetry, and even legend.

This will be the only possible solution of the winning of the coveted title of Champion Band of the British Empire, which will be decided at the National Band Festival this year.

The test piece for the Championship section, in which twenty-four of the leading bands, including



MR. J. HENRY ILES

Founder and Director of the National Band Contest, Crystal Palace, and Conductor of the Mased Bands at the Evening Festival Concert

six ex-champions, will take part, has been specially written by Sir Granville Bantock, and the experts pronounce the composition as the sternest that has ever been set to these amateur musicians from the workshops of Great Britain.

Bantock took for his theme the emotional story told by Shelley from the Greek legend of "Prometheus Unbound," and he has made it quite clear that only by a close study of the poem can a winning interpretation be produced.

The piece is definitely in the "prom" orchestral class, and will undoubtedly go all round the world as a band classic.

The story of this great music festival and contest that every year enthuses upwards of two hundred bands to journey with their followers from all parts of Great Britain to London, at great cost, and in many cases with the greatest difficulty, is one of the romances of British national music, which the event has done so much to create.

It really began with the Boer War, when Mr. John Henry Iles, the Founder and Director of the Festival, brought twenty-nine bands from the industrial centres of the North of England to play in London to help the "Absent Minded Beggar" Fund

From "THE SOUND WAVE" for September, 1933

(by the Editor's permission)

for the relatives of volunteers who went to fight in South Africa.

When Mr. Iles began his battle to work up enthusiasm for working-class bands and brass band music, the bodies of such musicians were few and far between, and had little original music of their own. To-day, Mr. Iles can point to some *thousands of amateur brass bands in the land* with a following of from *five to ten hundred or more each*—a direct monument to his life's work.

It is fitting that Mr. Iles should this year have been unanimously elected to be Master of the ancient Worshipful Company of Musicians, one of the oldest of the City of London Guilds.

It is a further tribute that each year the greatest composers of the day write special, original test pieces for the occasion—Elgar, Bantock, Holst, Keighley and John Ireland, have been among these during the past few years.

In the Championship section all parts of the country will again be represented, bands hailing from a whole range, from Glasgow to London itself. The six ex-champion bands that will again be competing will be:—Foden's Motor Works (Cheshire), present holders of the title; Carlisle St. Stephen's; Wingate's

[Continued on Page 19]

There's something about the

"DEEP HARMONY"

Series of Hymn-Tunes

contained in Nos. 1, 2, 3, 4, 5, 6, 7

Sets arranged for

BRASS BANDS

that appeals to ALL.

Also in the

"Deep Harmony" Selection

which incorporates the famous
Hymn tune "Deep Harmony"

Call at our Stand (22) Crystal Palace
or write for full details to

JOSHUA DUCKWORTH LTD.
COLNE, LANCASHIRE

6.30 p.m. ORGAN RECITAL by Mr. F. W. HOLLOWAY

- | | | | | | | | | | | |
|--|---|---|---|---|---|---|---|---|---|--------------|
| 1. Toccata from the Fifth Organ Symphony | - | - | - | - | - | - | - | - | - | Widor |
| 2. Prelude in C sharp minor | - | - | - | - | - | - | - | - | - | Rachmaninoff |
| 3. Improvisation | - | - | - | - | - | - | - | - | - | Guilmant |
| 4. March on a Theme by Handel | - | - | - | - | - | - | - | - | - | |

7 p.m.

THE MASSED BANDS

- | | |
|----------------------|---------------------|
| BAXENDALE'S WORKS | FODEN'S MOTOR WORKS |
| BLACK DYKE MILLS | HARTON COLLIERY |
| CRYSTAL PALACE | IRWELL SPRINGS |
| WINGATE'S TEMPERANCE | |
| Conductor | MR. J. HENRY ILES |

PROGRAMME

(NOTE.—Owing to the length of the programme encores will be strictly limited)

PART I

- | | | | | | | | | | | |
|-------------------------|---|---|---|---|---|---|---|---|---|-----------------------------|
| 1. (a) Fanfare | - | - | - | - | - | - | - | - | - | - |
| (b) The National Anthem | - | - | - | - | - | - | - | - | - | - |
| 2. March | - | - | - | - | - | - | - | - | - | - |
| | | | | | | | | | | The "Champion" Medley March |
| 3. (a) Prelude | { | - | - | - | - | - | - | - | - | - |
| (b) Rondo | } | - | - | - | - | - | - | - | - | from "A Downland Suite" |

These two movements are taken from the above named Suite, which was composed by John Ireland expressly for last year's National Championship Brass Band Contest at the Crystal Palace, on which occasion Foden's Motor Works Band was awarded the first prize for its performance.

(FODEN'S MOTOR WORKS BAND. Conductor: F. MORTIMER)

- | | | | | | | | | | | | |
|---------------------|---|---|---|---|---|---|---|---|---|--|-------------|
| 4. Concert Overture | - | - | - | - | - | - | - | - | - | "Oliver Cromwell" | Henry Geehl |
| | | | | | | | | | | This work was composed for an earlier Contest in the National series, and has since been a favourite item, both as a test and also as a programme piece. It should be mentioned that the Overture is too lengthy to be played in full in this evening's programme, but that judicious "cuts" or omissions have been made, thus enabling it to be included in part. | |
| | | | | | | | | | | (BLACK DYKE MILLS BAND. Conductor: A. O. PEARCE) | |
| 5. Trombone Solo | - | - | - | - | - | - | - | - | - | "Love's Enchantment" | Prior |
| | | | | | | | | | | This Solo was originally selected by the Composer when a member of Sousa's Band to display his virtuosity on the trombone. To-night's exponent is doubtless the youngest trombonist who has essayed to equal, if not surpass, the Composer's performance. | |
| | | | | | | | | | | (Soloist: C. DEVONPORT) | |
| | | | | | | | | | | (Accompanied by HARTON COLLIERY BAND. Conductor: E. THORPE) | |

PART II

- | | | | | | | | | | | | |
|-----------------|---|---|---|---|---|---|---|---|---|---|--------------|
| 6. Festal March | - | - | - | - | - | - | - | - | - | "Cornelius" | Mendelssohn |
| | | | | | | | | | | "Cornelius" was written to celebrate the visit of the famous painter of that name to a special function relating to Art in Lower Germany. | |
| 7. Largo | - | - | - | - | - | - | - | - | - | This well-known piece admirably displays the organ-like quality of brass bands. | Handel |
| 8. Quick March | - | - | - | - | - | - | - | - | - | "Gleneagle" | H. B. Hawley |
| | | | | | | | | | | A bright March, which makes a striking contrast to the previous sombre "Largo." | |
| 9. Entr'acte | - | - | - | - | - | - | - | - | - | "Call o' the Dawn" | D. R. Pryor |
| | | | | | | | | | | This melodious Morceau has been broadcast on several occasions, both by Orchestras and Cinema Organs, with pleasing effect. | |



CRYSTAL PALACE. BOATING LAKE.

P. 395

FELDMAN'S

PRICE
6d.

14th LITTLE GREEN BOOK
OF SOLO CORNET PARTS OF
THE SEASON'S SONG SUCCESSES

PRICE
6d.

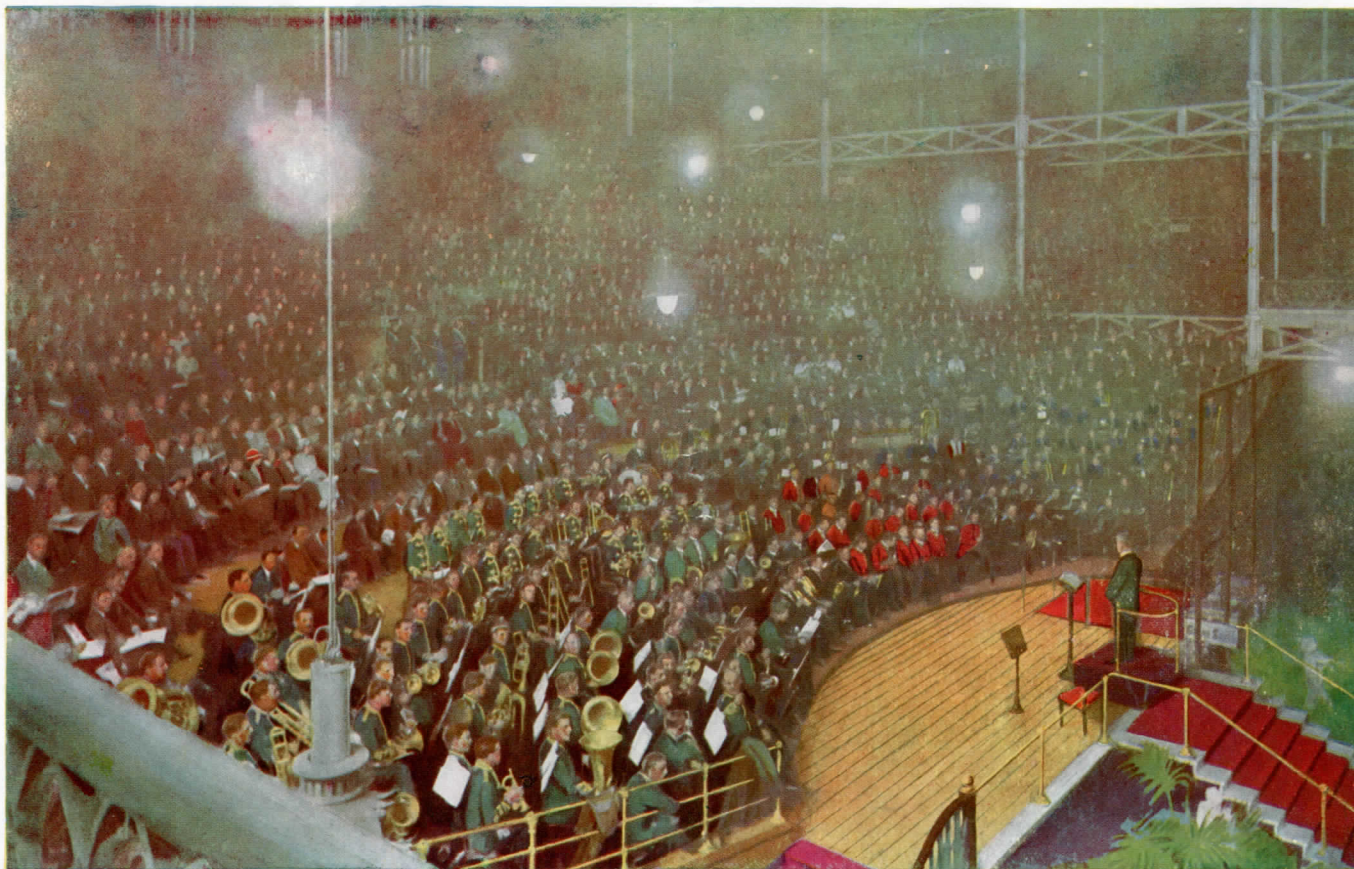
AS ISSUED TO MEMBERS OF THE FELDMAN BAND JOURNAL

CONTENTS :-

	Brass Band (20)	Brass and Reed Band (30)	Extra Parts Each
	s. d.	s. d.	
MY WISHING SONG (Waltz)	2 6	3 9	2d.
SMILIN' THROUGH, and MOTHER MACHREE (Cornet Solos)	2 6	3 9	2d.
I LIKE MOUNTAIN MUSIC (Humouresque or Fox-Trot)	2 6	3 9	2d.
WHEN IT'S LAMP LIGHTIN' TIME IN THE VALLEY (Waltz)	2 6	3 9	2d.
HARD TIMES COMIN' NO MORE (Fox-Trot)	2 6	3 9	2d.
I MAY NEVER PASS YOUR WAY AGAIN (Cornet Solo)	2 6	3 9	2d.
WE'LL SEE IT THROUGH (Fox-Trot)	2 6	3 9	2d.
WALTZ MEMORIES (Waltz)	2 6	3 9	2d.
WALTZLAND (Waltz)	2 6	3 9	2d.
'ROUND THE BEND OF THE ROAD (Spiritual)	2 6	3 9	2d.
SWEETHEARTS FOREVER (Fox-Trot)	2 6	3 9	2d.
IN A SHANTY IN OLD SHANTY TOWN (Fox-Trot or March)	2 6	3 9	2d.
WHERE'S BILL BAILEY? (March or Two-Step)	2 6	3 9	2d.
THE TEDDY BEARS' PICNIC (Characteristic Novelty)	3 6	5 0	4d.
AISHA (Indian Intermezzo)	3 6	5 0	4d.
ONCE UPON A TIME { SELECTION. Comprising the late HARRY DACRE'S most FAMOUS SONGS. Including: Jolly Little Polly, Good-bye Mignonette, I Can't Thing ob Nothin' Else but You }	6 0	9 0	4d.
42nd STREET SELECTION { From the WARNER BROS. AND VITAPHONE FILM of the same title. Including: Shuffle Off to Buffalo, and Young and Healthy }	6 0	9 0	4d.

All the above Hits HAVE BEEN FIRST RECEIVED BY THE FELDMAN BAND JOURNAL
MEMBERS OF
Bandland's Most Progressive Organisation. Write or Call for Full Particulars and Latest Lists.

B. FELDMAN & CO., 125, 127, 129 Shaftesbury Avenue, London, W.C. 2



THE FESTIVAL EVENING CONCERT BY THE MASSED BANDS

This Way to the Palace!

Trains
every few
minutes

**SOUTHERN
ELECTRIC**

Cheap
Return
Fares

CHEAP DAY RETURN TICKETS DAILY TO

THE CRYSTAL PALACE

by ALL TRAINS* from

LONDON BRIDGE 1/- VICTORIA 1/-

HOLBORN VIADUCT 1/- ST. PAUL'S 1/-

WATERLOO 1/1

Also from numerous S.R. Suburban Stations.
Bookings also to PENGES EAST and PENGES WEST
*(Weekdays after 9.30 a.m. Sundays and Bank Holidays all day)

6d

Quickest Way Home!
CHEAP SINGLE TICKETS to LONDON (VICTORIA, LONDON BRIDGE
and HOLBORN VIADUCT) available at Intermediate Stations

6d

Save Time and Money by

SOUTHERN ELECTRIC

10. Fugue - - - - - { " St. Anne " (Part 1) } - - - - - Bach
 (Part 3) }
 A standard work with organists, which masterfully exploits this well-known Hymn in fugal form.

11. (a) Chorale - - - - - " Belle Vue " - - - - - J. Henry Iles
 A theme of thanksgiving dedicated to the late Sir Arthur Sullivan, and written in commemoration of the twenty-fifth anniversary of the National Band Festival. The tune is adaptable for the Doxology (" Praise God From Whom ") and Grace (" We Thank Thee, Lord ").

(b) Hymn - - - - - " Sandon " - - - - - Purdey
 The playing of this Hymn has become traditional at these Festival Concerts. It is, indeed, looked for by the audience, and its direct simpleness never fails to impress its hearers.

12. Chorus - - - - - " And the Glory of the Lord " - - - - - Handel
 The first performance of this glorious Chorus by the Massed Bands, and it is very appropriate that it should take place in surroundings sacred to Handelian memories.

It may be mentioned that the audience to-night, in respect of Part 2, is countless, for not only those who are present have been entertained, but " listeners-in " as well, for this part has been broadcast, and at the same time each item has been recorded by the H.M.V., and will thus be on permanent record.

Seats, Prices - - - - - 2/-, 3/-, 4/- and 5/- including tax.

**SEATS CAN BE BOOKED FROM 10 a.m. AT THE CRYSTAL PALACE BOX OFFICE
 VISITORS ARE ADVISED TO BOOK EARLY**

SPECIAL NOTICE !! For the convenience of visitors to the National Band Festival, arrangements have been made to keep the Post Office open until after the awards have been announced. This information is not available until after the conclusion of the Evening Concert, and those desirous of utilising the facilities referred to will be able to dispatch their communications from the Post Office adjoining the the Main Entrance, either by telephone, telegram or letter.

SIR GRANVILLE BANTOCK

ONE learns from the series of Miniature Biographies, published by Messrs. J. & W. Chester, that Sir Granville was born in London on August 7th, 1868, and was educated with a view to an appointment in the Indian Civil Service, but that his talent and love for the art of music soon estranged him from that career. He was first a student at Trinity College of Music and then at the Royal Academy of Music, and it is worthy of record that he won the Macfarren Scholarship on the completion of his first term at the latter institute.

Sir Granville has had a wide experience in the domain of music: as editor of a monthly review; as composer of music, ranging from solos, songs and part-music, up to the highest form in chamber music and orchestral and band classics; from musical director on tour with an operatic company and conductor of the New Brighton Tower Military Band and Orchestra, to principal of the Birmingham and Midland Institute School of Music, which position he holds at the present time.

It may be said he specialises in the Oriental and mystic idiom.

" PROMETHEUS UNBOUND "

This symphonic prelude may be likened to an overture which, in many cases, forms a brief résumé of the full work which follows it.

We are reminded by the distinguished composer that the prelude is " after Shelley," which really amounts to a statement that the composition, in its conception, follows, in the main, Shelley's lyrical poem of the above title.

From the published report of a recent banquet of the Musicians' Company, at which Sir Granville was the principal guest of the reigning master, Mr. John Henry Iles, it will doubtless be remembered and realised that Sir Granville has a great sympathy with, and admiration for, the brass

[Continued on Page 18]

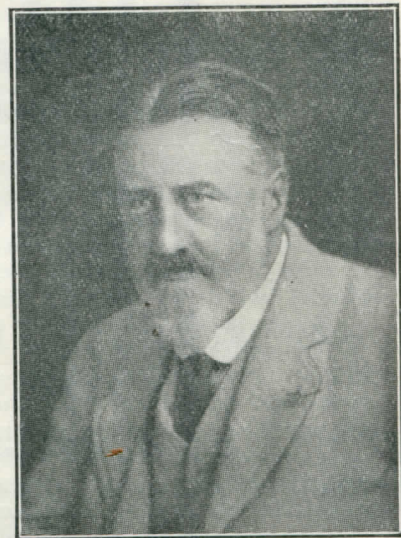


Photo by Elliott & Fry Ltd.
 SIR GRANVILLE BANTOCK

[Continued from Page 3]

Hall, to raise money for the sufferers from the South African War, when the late Sir Arthur Sullivan conducted the massed bands. In more recent years Mr. Iles has taken a keen interest in the National Brass Band Club, and with the inauguration of the League of Bands' Associations at Belle Vue, early in the month, he made a magnificent gift of £100 and a promise of a similar amount for the next four years. Surely the brass bands of Great Britain owe a great debt of gratitude to the Founder and Director of the National Band Festival. J. H. K.

Here is a list of the Championship winning Bands from 1900 to 1912:—

1900. DENTON ORIGINAL (Lancashire)	1907. WINGATE'S TEMPERANCE (Lancashire)
1901. LEE MOUNT (Yorkshire)	1908. IRWELL SPRINGS (Lancashire)
1902. BLACK DYKE MILLS (Yorkshire)	1909. SHAW (Lancashire)
1903. BESSES O' TH' BARN (Lancashire)	1910. FODEN'S MOTOR WORKS (Cheshire)
1904. HEBBURN COLLIERY (Durham)	1911. CROSFIELD'S SOAP WORKS (Lancashire)
1905. IRWELL SPRINGS (Lancashire)	1912. ST. HILDA (Durham)
1906. WINGATE'S TEMPERANCE (Lancashire)	

It was at the 1913 Festival that an original piece of music for the Championship Test Piece was first introduced for Brass Band Contests. The names of the pieces and their composers, together with the winning bands and judges, are here set out in datal order:—

<i>Winning Band</i>	<i>Test Piece</i>	<i>Composer</i>	<i>Judges</i>
1913. IRWELL SPRINGS...	... "Labour and Love" Percy E. Fletcher P. E. Fletcher, Lt. Bilton, J. Ord Hume
1920. ST. HILDA "Coriolanus" Cyril Jenkins C. Jenkins, W. Reynolds, T. Eastwood
1921. ST. HILDA "Life Divine" Cyril Jenkins C. Jenkins, H. Bath, J. Carter
1922. HORWICH R.M.I. "Freedom" Hubert Bath H. Bath, Lt. Bilton, Lt. Hoby
1923. LUTON RED CROSS "Oliver Cromwell" H. Geehl H. Geehl, Lt. Bilton, H. Brian
1924. ST. HILDA "On the Cornish Coast" H. Geehl H. Geehl, J. H. Carter
1925. MARSDEN COLLIERY "Joan of Arc" Denis Wright D. Wright, Lt. Hoby
1926. ST. HILDA "An Epic Symphony" Percy Fletcher H. Bath, J. Brier
1927. CARLISLE ST. STEPHEN'S ...	"The White Rider" Denis Wright E. Dunn, H. Geehl
1928. BLACK DYKE "A Moorside Suite" Gustav Holst Sir G. Bantock, H. Geehl, C. Jenkins
1929. CARLISLE ST. STEPHEN'S ...	"Victory" C. Jenkins H. Brian, C. Jenkins, Dr. T. Keighley
1930. FODEN'S MOTOR WORKS ...	"Severn Suite" Sir Edward Elgar H. Geehl, T. J. Rees, G. Nicholls
1931. WINGATE'S TEMPERANCE ...	"Honour and Glory" Hubert Bath H. Bath, G. Mercer, C. Ward
1932. FODEN'S MOTOR WORKS ...	"Downland Suite" John Ireland H. Geehl, J. Brier, H. Bennett

[Continued from Page 17]

band movement. He has previously written a tone-poem entitled "KUBLA KHAN," and an "ORIENTAL RHAPSODY" as test pieces for these bands.

It is conceivable that in announcing this, his latest work, as a "prelude," Sir Granville contemplates extending it into a full-blooded symphony, in which event he will have paid the brass band movement a great compliment in favouring it with the first public performance of its "prelude." For the present, however, the work must be dealt with as a whole, and it may be presumed that the music follows the mythical legend.

The full story evidently goes beyond the limits of the prelude, so that for present purposes it should be sufficient to consider the chief character, "Prometheus."

The main idea of the story can, doubtless, be gleaned from the following epitome:—

Prometheus would probably in modern times be called a sculptor—he is said to have made figures of clay, and like many a sculptor of to-day, he wished to imbue his figures with life. With this object he stole fire from heaven, and was instantly punished for the offence by the God Jupiter, who had him bound to an inaccessible rock, where an eagle preyed on his body.

Prometheus thus suffered physical agony and mental anxiety and torture, being so separated from his loved ones. He was possessed of a secret which affected Jupiter, and ultimately retribution overtook the latter, and Prometheus was freed, so peace and love were his reward.

The work in the opening section displays pride and endurance, followed by suffering and exhaustion. Then comes rebellion and hopefulness, and finally, release and realisation of peace and contentment.

[Continued from Page 13]

Temperance (Westhoughton); Black Dyke Mills (Bradford); Irwell Springs (Bacup); and Luton. The London bands in this section will be that of the Crystal Palace itself and Hanwell.

For the first time, this year's Massed Bands Concert, held in the great concert hall of the Palace, after the contests, is to be broadcast in part and simultaneously recorded, a unique feature. Mr. Iles, the Director, will again conduct this event, as he has done each year of the competitions.

I cannot do better in telling you of the progress made by this section of our musical people, than to quote you what Mr. Iles declared to me only the other day.

"Thirty years ago," said Mr. Iles, casting his mind over that long period, "there were not half a dozen bands in Britain which could give a decent concert programme. Now, if you took the first five hundred bands in order of playing ability, you would find that the last half dozen would be equal to the first six in 1900 in musical ability."

A notable achievement—a movement that has "made" British national music known all over the world.

LIST OF EXHIBITORS IN SOUTH NAVE

- ARMY & NAVY SUPPLY STORES,
118/120 Praed Street, Paddington, W. 2.
- BEEVERS,
26 Aldermanbury, London, E.C. 2.
- BESSON & Co., LTD.,
196/8 Euston Road, London, N.W. 1.
- BOOSEY & HAWKES, LTD.,
295 Regent Street, London, W. 1.
- BOSWORTH & Co., LTD.,
8 Heddon Street, Regent Street, London, W. 1.
- CHAPPELL & Co., LTD.,
50 New Bond Street, London, W. 1.
- DALLAS, JOHN E. & SONS LTD.,
6-10 Betterton Street, Drury Lane, London, W.C.
- DUCKWORTH, JOSHUA, LTD.,
Manifold Printing Works, Colne, Lancs.
- FELDMAN & Co.,
125 Shaftesbury Avenue, London, W.C.
- KEITH PROWSE & Co., LTD.,
159 New Bond Street, London, W. 1.
- LAWRENCE WRIGHT MUSIC Co.,
Denmark Street, Charing Cross Rd., W.C. 2.
- PHILPOT, A. M.,
354 Beech Hill, Luton, Beds.
- QUICKFIT PUBLISHING Co.,
16 Jutland Avenue, Rochdale.
- REYNOLDS, T., SENR. & SONS,
43 Chapel Street, Salford, Manchester.
- SELMER, HENRI & Co. LTD.,
12 Moor Street, Cambridge Circus, London, W. 1
- TOMKINS, F. & SON,
71 Palmerston Road, Northampton.
- UNIFORM CLOTHING & EQUIPMENT Co., LTD.
10/11 Clerkenwell Green, E.C.1.
- WRIGHT & ROUND,
34 Erskine Street, Liverpool.

WHEN BRASS BANDS PLAY DANCE MUSIC

Every well-managed brass band regularly features modern popular music, including dance numbers, at the insistent call of the public. When it comes to this type of music there is an immediate necessity for special instruments designed particularly for this class of work.

IN THIS FIELD, IT HAS
ALWAYS BEEN A CASE OF
SELMER
FIRST—LAST & ALWAYS

SUCH AS
SELMER & ADOLPHE SAX
SAXOPHONES
CLARINETS
TRUMPETS

OLDS "BRASS"
Including the world's admittedly
finest trombone.

ALSO
LEEDY
DRUMS & TONED
PERCUSSION

See all these and many
other peerless lines,
including many remark-
able and indispensable
accessories, at the

SELMER STAND
NO. 7

HENRI SELMER & CO. LTD.
DAVIS HOUSE, 12 MOOR STREET
LONDON, W.1

THE CRYSTAL PALACE

TO London and to Londoners the Crystal Palace has been a familiar feature of the landscape for over eighty years, for it was erected in Hyde Park for the Great Exhibition in 1851. When removed to Sydenham and rebuilt on the high ground, from which it is possible to overlook London, the Crystal Palace became a centre of social life. Sir August Manns established the reputation of what was for many years the finest Symphony Orchestra in England, and introduced the public to the immortal Nine Symphonies of Beethoven and to the less familiar music of Brahms and Tschaiikowsky. In the courts round the Centre Transept tens of thousands of young students caught their first glimpse of the art of the world—Greek, Byzantine, Renaissance and the rest. The Crystal Palace was never far from London, though the train journey, which now takes twenty minutes, took three-quarters of an hour, omnibuses did not venture to Sydenham, and motor cars were unknown.

The Crystal Palace fell on difficult days and passed into the hands of the Official Receiver in 1913, but emerged triumphant with enhanced prestige as the property of the nation by aid of a public subscription. To-day it has developed a great popular appeal, and

Sir Henry Buckland has fought the long, hard road back to prosperity. Since it became public property, a tremendous sum has been spent on restoration and improvement, and to-day it attracts from far and wide, as is proved by the fact that during the past few years the average annual number of visitors has exceeded one million. It is impossible, within the narrow limits necessary here, to give particulars of all the aids to education and culture the great building holds. Full details are set out in the official handbook, but it may not be out of place to mention that no other place of entertainment caters for such a great variety of attractions. Among the larger features in the yearly programme of the Palace are the Annual Circus; a three-hour entertainment by the best talent of Europe; the National Show of Cage Birds, acknowledged to be the world's finest display; the Kennel Club's Championship Show; other big dog shows; the greatest Show of Poultry, Pigeons, Rabbits and other small live stock; unparalleled Firework Displays. Boxing Tournaments, Football Matches, Speedway Racing, Musical Festivals, Carnivals, Sports Meetings, Concerts and other events too numerous to mention.

It may be said to-day that the Crystal Palace offers a programme more comprehensive than that of any other indoor or outdoor place of entertainment in the world.

THE CHAMPION JOURNALS, 1934

THE CONCERT JOURNAL

	Full Score	Set of 20 Parts	Extra Parts
Symphonic Prelude, "PROMETHEUS UNBOUND," Granville Bantock (after Shelley) ...	4/-	6/6	4d.
Symphonic Legend, "PRINCESS NADA," Denis Wright ...	4/-	6/-	4d.
(Full Conductor's part, 1/-)			
Symphonic Rhapsody, "THE CRUSADERS," Thomas Keighley (on Scott's Novel, "The Talisman") ...	4/-	6/-	4d.
Selection, "OPERATIC BOUQUET," Various ...	4/-	5/-	4d.
Chorus, "AND THE GLORY OF THE LORD," Handel (from "The Messiah") ...	—	5/-	3d.
Fugue, "ST. ANNE," Bach ...	—	4/6	4d.
Valse, "THE GRAFENBERGER," Gungl ...	—	5/-	3d.
Cornet Polka, "FASCINATION," G. Hawkins ...	—	2/6	1½d.
Contest March, "TRIUMPHANT," J. H. White ...	—	2/3	1½d.
Contest March, "GLENEAGLE," H. B. Hawley ...	—	2/3	1½d.

SPECIAL SUBSCRIPTION PRICE

£1 - 10 - 0 for 20 Parts. Extra Parts 2/-

THE PREMIER JOURNAL

	Full Score	Set of 20 Parts	Extra Parts
Selection, "GEMS OF MELODY, No. 2," Various ...	4/-	5/-	4d.
"LARGO," Handel ...	—	2/3	1½d.
Grand March, "CORNELIUS," Mendelssohn ...	—	2/3	1½d.
"SEVEN FAVOURITE HYMNS," J. B. Dykes ...	—	2/3	1½d.
Valse (Vocal), "FORGET-ME-NOT," S. Cope ...	—	4/6	3d.
Intermezzo, "THE CALL O' THE DAWN," D. R. Pryor ...	—	2/3	1½d.
Spanish Dances, "LA BALLERINA," A. J. Caldicutt ...	—	2/3	1½d.
Descriptive Morceau, "A DAY IN THE ALPS," G. Hawkins ...	—	2/3	1½d.
"RURAL SCENES," No. 3:—"Mayday Revels," S. Cope ...	—	2/3	1½d.
Sacred March, "SABBATH ECHOES," Various ...	—	2/3	1½d.
Medley March, "CHAMPION," Various ...	—	2/3	1½d.
March, "ATHENA," J. Lafont ...	—	2/3	1½d.

SPECIAL SUBSCRIPTION PRICE

15/- for 20 Parts. Extra Parts 1/-

The Champion (1934) Combined Journals

comprising

The Concert and Premier Journals

as above at the Special Price of

£2 for 20 Parts

Extra Parts 2/-

R. SMITH & CO., LTD., 210 STRAND, LONDON, W.C. 2

ENGAGEMENTS HAVE NOW BEEN COMPLETED FOR THE

CRYSTAL PALACE GRAND CONTINENTAL CIRCUS

Commencing
BOXING DAY, DECEMBER 26th

THE PROGRAMME WILL INCLUDE
**THE MOST POPULAR
CONTINENTAL ARTISTES**
MANY OF WHOM WILL BE APPEARING IN ENGLAND FOR
THE FIRST TIME

The Kennel Club's 72nd Open Championship Show

Wed. & Thurs., OCTOBER 11th & 12th

**THE PREMIER DOG SHOW OF THE
WORLD**

Open first day 10-8, second day 10-6

The Crystal Palace Grand International Show of Poultry, Pigeons and Rabbits

NOVEMBER 14th, 15th and 16th

THE WORLD'S GREATEST SHOW

Over 12,000 Exhibits on view

CRYSTAL PALACE SPEEDWAY

**LEAGUE MATCHES
SATURDAYS at 3.30**

October 7th

PALACE v. BELLE VUE

October 14th, Final Meeting

PALACE v. WEST HAM

**MOTOR CYCLE AND SIDE CAR
ROAD RACING
SATURDAY, OCTOBER 28th**

Commencing 2.30 p.m.

Great News !!

A NEW MARCH KING HAS
ARRIVED IN THE PERSON OF

HORATIO NICHOLLS

WITH HIS FAMOUS

" MARCH OF THE HERALD "

Get your Band Parts now at the Lawrence Wright Stall in the Main Aisle

ALSO YOU MUST GET OUR NEW

SOLO CORNET BOOK No. 10

PRICE 6d.

CONTAINING 24 OF THE LATEST HITS, INCLUDING :

" LAZYBONES "

" STORMY WEATHER "

" THERE'S A CABIN IN THE PINES "

" I RAISED MY HAT " " SEVEN YEARS WITH THE WRONG WOMAN "

" WHEN THE WILD, WILD ROSES BLOOM "

" HAVE YOU EVER BEEN LONELY "

" THAT'S MY HOME "

" THERE'S SOMETHING ABOUT A SOLDIER "

AND OUR NEW HIT AT BLACKPOOL

" I'D LIKE TO GO BACK IN THE EVENING "

Net Prices : BRASS 2/6 MILITARY 3/9 BRASS-REED 3/9 Extras 2d. each

IF YOU WANT YOUR BAND TO PLAY POPULAR MUSIC Get your Band Secretary to fill in his Name and Address in the space below and we will forward you complete particulars of our Brass and Military Band Club. New subscribers receive parts of our Twelve Latest Hits immediately on joining the club. For the moderate sum of 2 gns. you receive music to the value of over £6 over the period of a year.

Name of Secretary..... Parts required.....

Name of Band.....

Address.....

THE LAWRENCE WRIGHT MUSIC CO.,

19 Denmark Street, Charing Cross Road, London, W.C. 2 'Phone : TEMPLE BAR 2141 (5 lines)