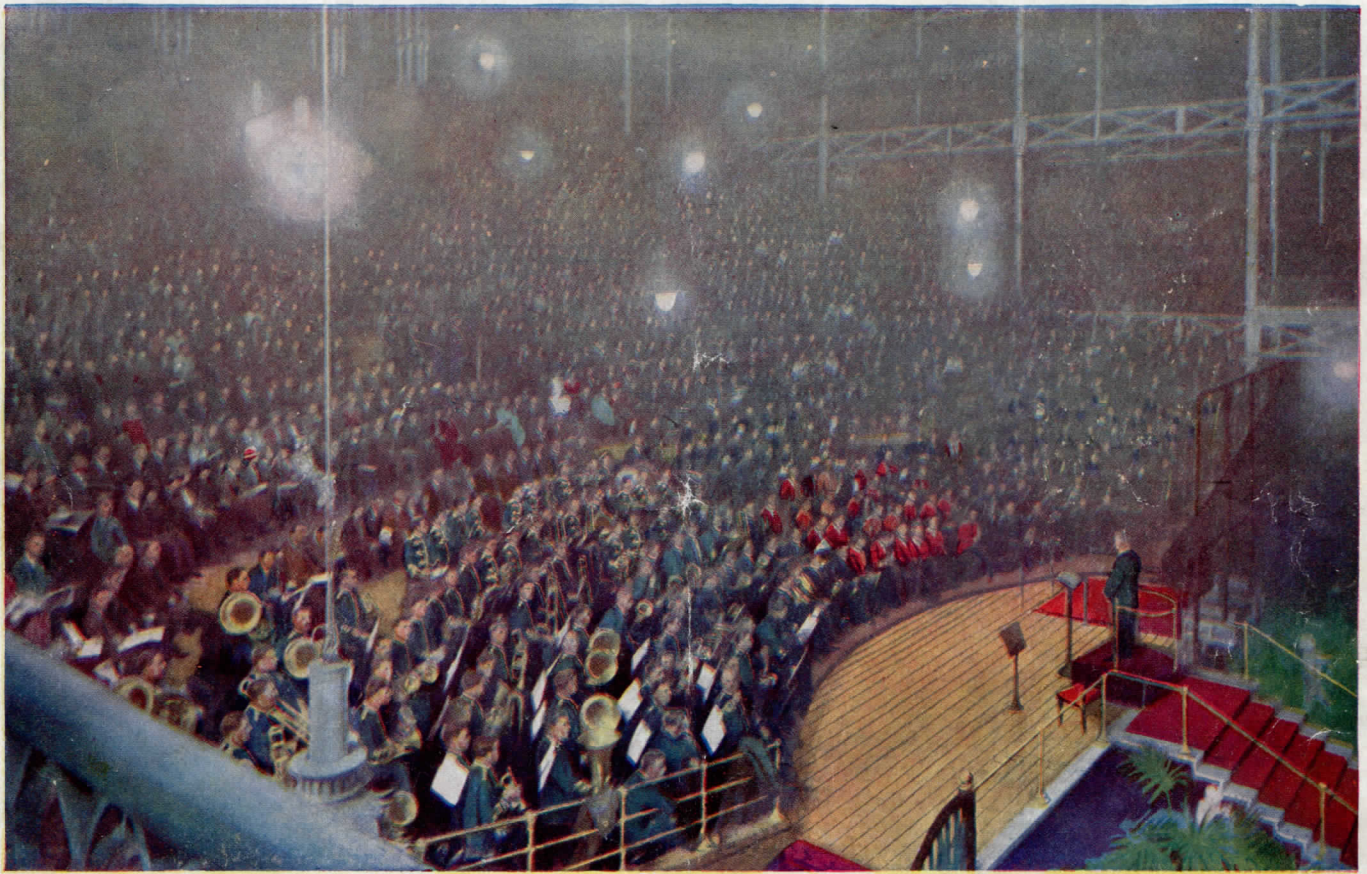




# THE 29th ANNUAL BAND CONTEST

Being the 34th Anniversary of the  
**GREAT NATIONAL BAND FESTIVAL**



*Programme & Souvenir  
of the  
Crystal Palace*



OFFICIAL PUBLISHERS THE PHOTOCHROM CO. LTD., ROYAL TUNBRIDGE WELLS, KENT, EXCLUSIVE COPYRIGHT

## FULL LIST OF BANDS



ENGAGEMENTS HAVE NOW BEEN COMPLETED FOR THE

**CRYSTAL PALACE  
GRAND CONTINENTAL  
CIRCUS**

Commencing

**BOXING DAY, DECEMBER 26th**

---

THE PROGRAMME WILL INCLUDE

**THE MOST POPULAR  
CONTINENTAL ARTISTES**

MANY OF WHOM WILL BE APPEARING IN ENGLAND FOR  
THE FIRST TIME

**The Kennel Club's 73rd  
Open Championship Show**

*Wednesday & Thursday, OCTOBER 10th & 11th*

**THE PREMIER DOG SHOW OF THE WORLD**

Open first day 10-8, second day 10-6

---

**The Crystal Palace Grand International  
Show of Poultry Pigeons and Rabbits**

*NOVEMBER 20th, 21st & 22nd*

**THE WORLD'S PREMIER SHOW**

Admission first day 2/6, other days 2/-





# CRYSTAL PALACE

SIR HENRY BUCKLAND - - - General Manager

THE  
34th Anniversary of  
the Great National  
BAND FESTIVAL

(Being the Twenty-Ninth Band Contest)

SEPTEMBER 29th

1 9 3 4

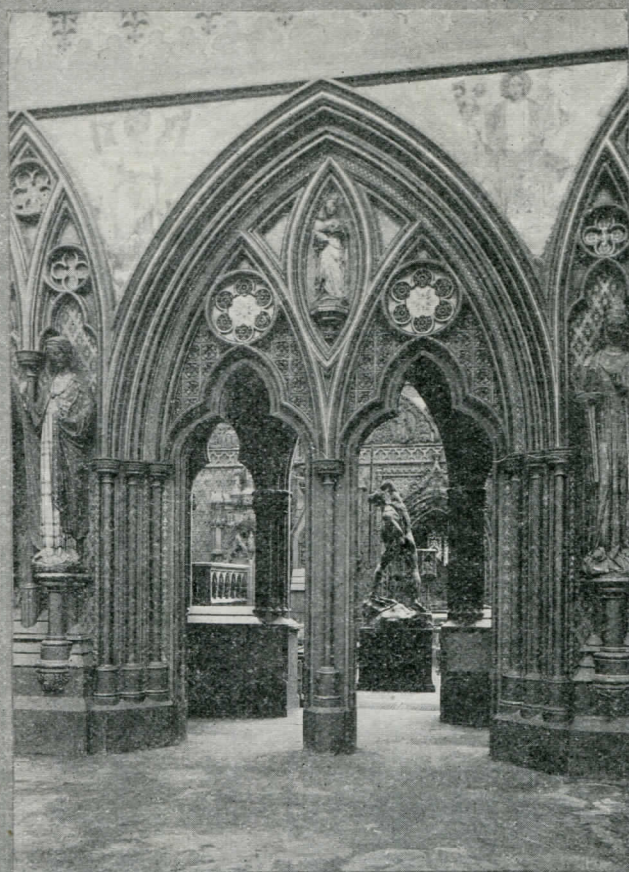
*Under the Gracious Patronage of*  
HIS MAJESTY THE KING

*Director and Founder*

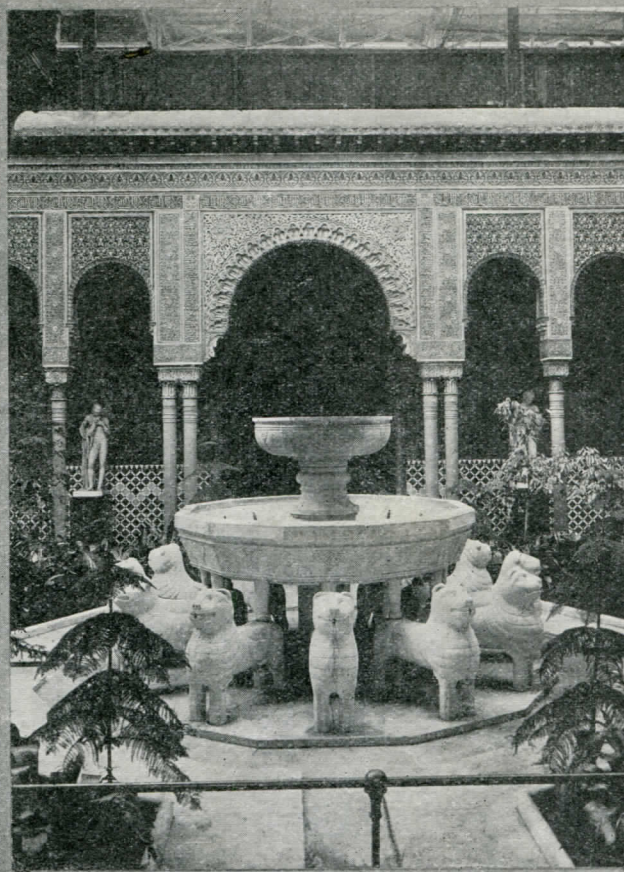
Mr. J. HENRY ILES  
(Officier d'Academie Francaise)

COPYRIGHT PUBLICATION  
BY THE  
PHOTOCHROM CO., LTD.  
GRAPHIC WORKS, ROYAL TUNBRIDGE WELLS, KENT





ENGLISH MEDIAEVAL COURT.



ALHAMBRA COURT.

## **A GRAND CONCERT**

TO BE GIVEN BY

**: THE FAMOUS :  
CALLENDER'S GABLE WORKS BAND**

(BY KIND PERMISSION OF SIR T. O. CALLENDER)

IN THE

**BATTERSEA TOWN HALL**  
(LAVENDER HILL)

**SATURDAY, 6th OCTOBER, at 7.45 p.m.**

PROCEEDS IN AID OF THE BATTERSEA S.A. BAND

**SEATS—Numbered and Reserved 2s. Unreserved 1s.**

Obtainable from The Organizing Secretary, 18 BURNS RD., S.W. 11

Travelling Facilities—Trains to Clapham Junction.

Trams—26, 28 & 34

Buses—19, 37, 39, 49, 77 & 177



# The Great National Band Festival

THE NATIONAL BAND FESTIVAL  
WAS FOUNDED IN 1900 BY MR J. HENRY ILES

## “BRASS BANDS,”

Says Sir Landon Ronald, “Are the Music of the People.”

THE way the musical community is divided into self-contained sections in this country—each being scarcely aware of the existence of the other—is surprising and, in my opinion, regrettable.

Although, for instance, there are hundreds of competitive festivals, it is perfectly easy to live an active professional life and be little more than dimly aware that such things exist.

Yet thousands of amateurs live in this little competitive world scarcely aware that any other form of music is active around them.

But there is another little world of music to which I wish to draw attention, namely, the brass-band movement.

I think I may claim to have lived a pretty active life as a professional musician, but I confess that I was amazed when I made enquiries as to the extent of brass-band activity in England.

Just think of this: there are over 100,000 men playing in brass bands in England, comprising something like 5,000 bands.

Now, to overlook one brass band is a feat, but to overlook 5,000 of them is miraculous.

### COLLIERIES OR FACTORIES

It is far from my wish, however, to be flippant on the subject, for I do not see how any musician can fail to be impressed by this widespread enthusiastic amateur movement in music.

Practically all these bands are identified with collieries or factories. There is no doubt whatever that they form a branch of music in which this country is without a rival, and it is good to hear that such composers as Elgar, Bantock, Holst and John Ireland have awakened to the fact that there is a wonderful field for them.

For the most part, the life of these bands is competitive. There are four big contests annually at Belle Vue, Manchester, and the world-famous competitions in seven sections at the Crystal Palace in September, and hundreds of smaller contests.

Belle Vue and the Crystal Palace are presided over by that great pioneering enthusiast, J. Henry Iles.

The system of competitions has been well thought out. A band begins at the bottom, but when it wins a prize in that section it moves up automatically into the next higher; and

so on, until it reaches the premier section and competes with the best on equal terms.

Not less skilful is the system on which the bands themselves are built. The ingenuity of this impresses me mightily. Briefly, all the instruments in the band, with the exception of the trombones, are different sizes of the same instrument. That is to say, they are all operated by the fingering of three valves. Further, all music for brass bands is written in the same clef (the G, or treble), except the bass trombone who sedulously sticks to the bass clef.

This makes it possible for the men to be taught in class, and for a man who plays one of the instruments quickly to take up any of the others (except, of course, the trombones). Here, indeed, is a marvel of simplicity and flexibility, such as a poor, harassed orchestral conductor might envy with all his soul.

### A FAMILY AFFAIR

The refinements in teaching of these men are done by experts, who are engaged by the bands to go round coaching for contests; but the real job of teaching is a family affair, fathers teaching sons, brothers their smaller brothers, and so forth. There are many boys' bands in which the youngsters can gain experience in preparation for later days of strenuous competition.

I must not give the impression that these bands live only in their contests. Of course they do not.

Wherever there is an open-air function—sports meeting, flower show, pageant, procession, etc.—there you will find brass bands at work. Some of these bands have no more than a local reputation, but some become nationally and a few internationally, famous.

There are no complaints from brass bands of the evil influence of broadcasting, for—as they say—you can't use a loud speaker to lead a procession of youngsters. But there is many a fine player in our leading orchestras who learnt his job in a works brass band.

Here's wishing long life and prosperity to a fine movement of the people, a clever movement, a well-led movement, and, I believe, a genuinely artistic movement.

[Reprinted from the “News Chronicle” by courteous permission.]

With their usual enterprise, the National Sunday League have arranged for the Band winning the Championship and Thousand Guinea Trophy to play on Sunday, September 30th, 1934, at the Finsbury Park Empire



# NATIONAL BRASS BAND CLUB and LEAGUE OF BANDS' ASSOCIATION

(Incorporating the National Bands' Federation)

*Patron:*

John Henry Iles, Esq.

*President:*

Herbert Wood, Esq.

*President-elect:*

Sir Henry Buckland

*Vice President:*

Sir Dan Godfrey

J. H. Kichenside  
*Hon. Secretary*

H. H. Thomas  
*League Secretary*

---

**MEMBERSHIP OPEN TO BAND OFFICIALS & OTHERS  
INTERESTED IN THE BRASS BAND MOVEMENT**

---

Association officials are invited to call at the Club room in the North Nave and obtain particulars of the League of Bands Associations. Mr. J. H. Kichenside, the Hon. Secretary will be pleased to welcome Club members and friends, at the Club room.

Executive Offices, Kingsway Hall  
London, W.C.2





THE CRYSTAL PALACE  
THE LARGEST EXHIBITION BUILDING IN THE WORLD

Exclusive Photochrom Copyright





**FREE** to all Bands . . .

OUR NEW  
BOOK for the  
BANDSMAN  
DRUMMER

Write now to

**WEAVER & DICKSON**  
17 MANETTE STREET • LONDON • W1





EGYPTIAN COURT

# The Mecca Cafes

CATERERS BY APPOINTMENT TO THE CRYSTAL PALACE

Head Offices, Stores, etc.: **76 SOUTHWARK STREET, S.E. 1**  
**LONDON:—CAFES AND RESTAURANTS**

54 Gresham Street.  
 Telegraph Street.  
 101 Leadenhall Street.  
 145 Cannon Street.  
 Broad Street.  
 14 Walbrook.  
 49 London Wall.

50/51 Fore Street.  
 31 Great St. Helens.  
 75b Queen Victoria Street.  
 3 Gresham Street.  
 9/10 Mark Lane.  
 23 Coleman Street,  
 1 Whittington Avenue

69/70 Mark Lane.  
 139 Cannon Street.  
 King's Arms Yard.  
 140 Cheapside.  
 24 Lime Street.  
 21 St. Mary Axe.  
 15 Copthall Avenue.

68 Basinghall Street.  
 56 Ludgate Hill.  
 11a Queen Street.  
 11/12 Blomfield Street.  
 65/6 Chancery Lane.  
 143 Charing Cross Road.  
 57 Gracechurch Street.

## PROVINCES

### BIRMINGHAM

The Station Street Cafe,  
 Station Street.  
 The Kings Cafe,  
 Midland Arcade, New Street.  
 The Mecca Cafe,  
 Waterloo Street.  
 The Cafe Royal,  
 Prudential Buildings,  
 Corporation Street.

### HULL

The Mecca Cafe,  
 Prudential Buildings,  
 King Edward Street.

### CAMBRIDGE

The Mecca Cafe,  
 Petty Cury.

### SHEFFIELD

The Haymarket Hotel,  
 Haymarket.

### LIVERPOOL

The Cotton Exchange Cafe  
 Ormond Street.  
 The Mecca Cafe,  
 6 Drury Lane.  
 The Exchange Cafe,  
 Exchange Flags.  
 The Mecca Cafe,  
 Clayton Square.  
 The Mecca Cafe,  
 India Buildings.  
**BRIGHTON**  
 The Mecca Cafe,  
 105 King's Road.

### BRIDLINGTON

The Mecca Cafe,  
 8/9 Garrison Street.

### MANCHESTER

The Mecca Cafe, 37 Cross Street.

### ST. ALBANS

The Mecca Cafe, Market Place.

### TUNBRIDGE WELLS

The Mecca Cafe,  
 44/46 The Pantiles.

### HOTELS.

THE ROOF GARDEN HOTEL, John Bright Street, BIRMINGHAM.

THE HAYMARKET HOTEL, King Street, SHEFFIELD

SOLE CATERERS AT CRYSTAL PALACE, THE ARSENAL FOOTBALL CLUB, THE WEST HAM UNITED FOOTBALL CLUB, THE CHARLTON ATHLETIC FOOTBALL CLUB, THE NOTTS COUNTY FOOTBALL CLUB, THE NOTTS FOREST FOOTBALL CLUB, ROYAL OPERA HOUSE DANCES (COVENT GARDEN), PALAIS DE DANSE (NOTTINGHAM). Also CONTROLLING THE RITZ PALAIS DE DANSE (MANCHESTER), THE LOCARNO DANCE HALL, (STREATHAM), AND SHERRY'S DANCE HALL (BRIGHTON), LIDO DANCE HALL (CROYDON), MECCA DRY CLEANING DEPARTMENT, 106-108 BROADWALL, S.E.1.



# The Great Championship Contest

for the

## CRYSTAL PALACE ONE THOUSAND GUINEA TROPHY

**LAST YEAR'S WINNER**  
**FODEN'S MOTOR WORKS BAND**

11.45 a.m.—In the Concert Hall

Grand Championship Brass Band Contest for the Crystal Palace One Thousand Guinea Challenge Trophy and the "Daily Telegraph" Challenge Cup, and other Prizes

Adjudicators:— H. Geehl  
 W. Reynolds  
 F. Wright

### PRIZES

**FIRST PRIZE.**—The Championship of Great Britain and the Colonies, the winners of which will be the holders for the year (under special regulations) of the CRYSTAL PALACE NATIONAL CHALLENGE TROPHY, of the value of One Thousand Guineas, and a CASH PRIZE OF FIFTY POUNDS, and Messrs. BOOSEY & HAWKES, LTD., 295 Regent Street, London, W., will present Any Band Instrument, to be selected from the Boosey and Hawkes' catalogue, to the value of TWENTY-ONE POUNDS, and Messrs. WRIGHT & ROUND, 34 Erskine Street, Liverpool, will present one *Brass Band News* Gold Medal, to the Resident Bandmaster, valued at FIVE GUINEAS, and Messrs. JOSHUA DUCKWORTH, LTD., Colne, Lancs. (Publishers of the *Deep Harmony Hymnary* and other hymn tunes) will present The Champion Journal and Music, to be selected from the catalogue of Messrs. R. Smith & Co., Ltd., to the value of FOUR GUINEAS.

**SECOND PRIZE.**—The *DAILY TELEGRAPH* CHALLENGE CUP (subject to regulations), value Fifty Guineas, and a CASH PRIZE OF FORTY-FIVE POUNDS, and Messrs. BESSON & Co., LTD., Prototype House, Frederick Close, Stanhope Place, Marble Arch, London, W. 2, sole manufacturers of the celebrated "Prototype" Band Instruments, will present one of their famous "New Standard" Tenor Slide Trombones, handsomely silver-plated and embellished, complete in attaché case, valued at TWENTY POUNDS.

**THIRD PRIZE.**—A CASH PRIZE OF FORTY POUNDS, and THE UNIFORM CLOTHING & EQUIPMENT Co., LTD., 10/11 Clerkenwell Green, London, E.C. 1, will present one Bandmaster's Complete Suit, including Frockcoat, Trousers and Cap, design to be selected by the winner, and also a Set of Gold-bronzed Music Stands, to the total value of SEVENTEEN GUINEAS.

**FOURTH PRIZE.**—A CASH PRIZE OF THIRTY-FIVE POUNDS, and Messrs. B. FELDMAN & Co., 125 Shaftesbury Avenue, London, W.C. 2, will present one Besson "Prototype" Class "A," Bb Cornet, "Desideratum" Model, as used by all the leading players, handsomely silver-plated, engraved and gold-plated inside bell, valued at SIXTEEN POUNDS TEN SHILLINGS.

**FIFTH PRIZE.**—A CASH PRIZE OF THIRTY POUNDS, and Messrs. KEITH PROWSE & Co., LTD., 159 New Bond Street, London, W. 1 and Messrs. JOSEPH HIGHAM, 213/215 Great Jackson Street, Manchester, will present one Bb Tenor Trombone, Higham British-made "Paragon" Contesting Model, silver-plated, engraved, complete in case, valued at SIXTEEN POUNDS.

**SIXTH PRIZE.**—A CASH PRIZE OF TEN POUNDS, and THE ARMY & NAVY SUPPLY STORES, 118 Praed Street, Paddington, London, W., will present one Complete Bandmaster's Uniform Outfit, comprising Frockcoat, Trousers, Cap and Baton, to the value of FIFTEEN GUINEAS.

### 1. CHAMPIONSHIP CONTEST

TEST PIECE: OVERTURE "COMEDY" ... .. John Ireland

#### SECTION 1

(Dedicated to Mr. J. HENRY ILES)

No.	Band	Conductor	Draw	Result	No.	Band	Conductor	Draw	Result
1.	Baxendale's (Manchester) Works ...	J. A. Greenwood	15	4	12.	Horden Colliery ...	J. Foster	11	3
2.	Black Dyke Mills ...	W. Halliwell	15	4	13.	Luton ...	E. S. Carter	12	3
3.	Blyth L.N.E.R. ...	G. Ramsden	15	4	14.	Metropolitan Works ...	H. Heyes	12	3
4.	Brighouse and Rastrick ...	W. Halliwell	15	4	15.	Morris Motors ...	S. V. Wood	12	3
5.	Carlisle St. Stephens ...	W. Lowes	15	4	16.	Nelson Old ...	C. Smith	12	3
6.	Creswell Colliery ...	J. A. Greenwood	15	4	17.	Rothwell Temperance ...	H. Nuttall	12	3
7.	Crystal Palace ...	D. Wright	15	4	18.	Rushden Temperance ...	T. Young	12	3
8.	Foden's Motor Works ...	F. Mortimer	15	4	19.	Scottish C.W.S. ...	G. Hawkins	12	3
9.	Hanwell ...	J. C. Dyson	15	4	20.	Slaithwaite ...	N. Thorpe	12	3
10.	Harton Colliery ...	W. Lowes	15	4	21.	Sowerby Bridge ...	W. Wood	12	3
11.	Heworth Colliery ...	N. Thorpe	15	4	22.	Wingate's Temperance ...	H. Moss	12	3
					23.	Workington Town ...	R. Hutchinson	12	3

Admission to Concert Hall ... .. TWO SHILLINGS

The Director's Office is in front of the Concert Hall. At "THE BRITISH BANDSMAN" Stand adjoining can be obtained "The Bandsman's Recreation," containing the Conductor's parts of to-day's Test Pieces—Price Two Shillings.

FOR FULL REPORTS AND RESULTS OF THE CONTEST ORDER THROUGH ANY NEWSAGENT THE "BRITISH BANDSMAN" WEEKLY

The Head Quarters of the National Band Club will be in the Crystal Palace Club room and will be available for members and friends. Mr. J. H. Kichenside, The Hon. Secretary, will be pleased to welcome them.



Important Reminder

To BANDMASTERS and SECRETARIES

BE SURE TO VISIT THE

# CHAPPELL STALL

"A Rhapsody in Blue"

THE PREMIER HOUSE—FOR THE BEST SELECTIONS

— Published this Day —

## SECOND NEW SULLIVAN SELECTION

and

## JEROME KERN MELODIES (SELECTION)

arranged by DENIS WRIGHT

SPECIAL TERMS FOR THIS DAY ONLY

also



Our 1934 NEW SOLO CORNET BOOK (Wonderful Value)

---

## MAKE YOUR DAY A COMPLETE SUCCESS

By Joining the Chappell Band Club

This will ensure your being kept up-to-date with the latest Intermezzi, Marches, Cornet Solos and outstanding Dance Successes

### Better Value Impossible

For Twelve Months' Membership

	£	s.	d.
Brass Band (26 parts) - - - -	1	10	0
Brass and Reed Band (31 parts) - -	1	15	0
Extra parts, each - - - - -		2	6

SIX MONTHS HALF RATE

**CHAPPELL & CO. LTD., 50 New Bond Street, London, W.1**



## 11.30 a.m.—In the Theatre

**Brass Band Contest for the "Daily Express" Challenge Shield and "The People" Challenge Shield and other Prizes**

*Adjudicators* :—H. BENNETT  
Dr. T. KEIGHLEY

### PRIZES

**FIRST PRIZE.**—The *DAILY EXPRESS* CHALLENGE SHIELD (subject to regulations) value Fifty Guineas, and a CASH PRIZE OF TWENTY POUNDS, and Messrs. CHAPPELL & Co., LTD., 50 New Bond Street, London, W. 1, will present one Besson Silver-plated and Engraved B♭ Tenor Trombone, valued at THIRTEEN POUNDS NINE SHILLINGS, and Messrs. WRIGHT & ROUND, 34 Erskine Street, Liverpool, will present one *Brass Band News* Gold Medal to the Resident Bandmaster, valued at THREE-AND-A-HALF GUINEAS.

**SECOND PRIZE.**—The *PEOPLE* CHALLENGE SHIELD, subject to regulations, and a CASH PRIZE OF FIFTEEN POUNDS, and Messrs. BOOSEY & HAWKES, LTD., 295 Regent Street, London, W., will present, from the Boosey & Hawkes Uniform Service, one Set of Folding Music Stands, value TEN GUINEAS.

**THIRD PRIZE.**—A CASH PRIZE OF TWELVE POUNDS, and THE LAWRENCE WRIGHT Music Co., Denmark Street, Charing Cross Road, London, W.C., will present one Set of Music Stands, valued at NINE POUNDS.

**FOURTH PRIZE.**—A CASH PRIZE OF TEN POUNDS, and Messrs. BEEVERS, 26 Aldermanbury, London, E.C. 2, will present one Bandmaster's Overcoat, valued at EIGHT GUINEAS.

**FIFTH PRIZE.**—A CASH PRIZE OF EIGHT POUNDS, and Messrs. HENRI SELMER & Co., LTD., Moor Street, Cambridge Circus, London, W. 1, will present one Silver-plated, engraved "Manhattan" Trumpet, with gold bell, complete in de luxe case, valued at SEVEN POUNDS FIFTEEN SHILLINGS.

### SECTION 2. GRAND SHIELD CONTEST

(Last Year's Winners: SLAITHWAITE)

*Test Piece* ... Symphonic Prelude, "Prometheus Unbound" *Granville Bantock*

No.	Band	Conductor	Draw	Result
1.	Blackhall Colliery	N. Thorpe	...	3
2.	Bradford City	H. Grace	...	...
3.	Coxlodge Institute	G. Snowden	...	...
4.	Crookhall Colliery Welfare	J. A. Greenwood	...	...
5.	Dunlop Works	W. A. Tomlinson	...	...
6.	Edmonton	W. Tyrrell	...	...
7.	Firbeck Colliery S.P.A.	A. Hilton	...	...
8.	Friary Brewery	D. Wright	...	...
9.	Great Central and Metropolitan	W. Smith	...	...
10.	Kettering Town	J. Woolley	...	...
11.	Lowerhouse Mills	G. Altham	...	4
12.	Manvers Main	A. Yates	...	...
13.	Munn & Felton's Works	W. Halliwell	...	...
14.	Pleasley Colliery	B. Lambeth	...	...
15.	Ripley United	W. J. Saint	...	5
16.	Skipton	H. Moss	...	...
17.	Swanwick Collieries	F. Skidmore	...	...
18.	Thorne Colliery	P. Stapleton	...	...
19.	Wallsend United Collieries	T. Dixon	...	...
20.	Watford	R. Hutchinson	...	...
21.	Wigston Temperance	C. Moore	...	...
22.	Worksop Borough	C. Pressley	...	...

## 11.30 a.m.—In the North Tower Gardens

**Brass Band Contest for the "Daily Sketch" Challenge Cup and "The News Chronicle" Trophy and other Prizes**

*Adjudicators* :—J. BRIER  
H. HIND

### PRIZES

**FIRST PRIZE.**—THE *DAILY SKETCH* CHALLENGE CUP (subject to regulations), value Fifty Guineas, and a CASH PRIZE OF FIFTEEN POUNDS, and A. M. PHILIP, Esq., 354 Beech Hill, Luton, Beds., will undertake repairs and silver-plating to the value of SEVEN POUNDS TEN SHILLINGS.

**SECOND PRIZE.**—The *NEWS CHRONICLE* TROPHY (subject to regulations), and a CASH PRIZE OF TEN POUNDS, and Messrs. F. TOMPKINS & SON, 71 Palmerston Road, Northampton, will present one F. Tompkins B♭ Cornet (Class "A"), valued at SEVEN GUINEAS.

**THIRD PRIZE.**—A CASH PRIZE OF EIGHT POUNDS, and Messrs. WEAVER AND DICKINSON, 17 Manette Street, London, W. 1, will present one No. 915 "Leader" Band Side Drum, finished in most suitable style of colour and plating, valued at FIVE POUNDS TWELVE SHILLINGS AND SIXPENCE.

**FOURTH PRIZE.**—A CASH PRIZE OF SEVEN POUNDS, and Messrs. PREMIER DRUM CO., LTD., Premier House, Golden Square, London, W. 1, Drum and Percussion Instrument Manufacturers, will present one genuine Zildjian Cymbal, valued at FOUR GUINEAS.

**FIFTH PRIZE.**—A CASH PRIZE OF FIVE POUNDS, and Messrs. T. REYNOLDS, SENR. & SONS, LTD., 43 Chapel Street, Salford, Manchester will do Repairs and Silver-plating to the value of FOUR POUNDS.

### SECTION 3. JUNIOR CUP "A" CONTEST

(Last Year's Winners: SWANWICK COLLIERIES)

*Test Piece* ... Symphonic Legend, "Princess Nada" ... *Denis Wright*

No.	Band	Conductor	Draw	Result
1.	Backworth Collieries Workmen's	J. Taylor	...	...
2.	Bedford Trades	E. S. Carter	...	...
3.	Coventry	W. Ellison	...	...
4.	Craghead Colliery	J. Smith	...	...
5.	Croydon Borough	E. W. Miles	...	...
6.	Durham Shakespeare Temperance	F. Wakeford	...	...
7.	Enfield Central	F. Dimmock	...	...
8.	Falmouth Town	G. Moore	...	...
9.	Horsham Borough	J. C. Dyson	...	...
10.	Leyton Borough	H. Rundle	...	...
11.	Lowerplace	W. Eastwood	...	...
12.	Lycett Mission	F. Dimmock	...	...
13.	Manchester C.W.S. Tobacco Factory	J. A. Greenwood	...	...
14.	Newcastle Corporation Tramways	J. A. Greenwood	...	...
15.	Raunds Temperance	O. Pentelow	...	...
16.	Ravensthorpe Collieries	J. Boddice	...	...
17.	Royal Fusiliers 1st Cadet Battn.	W. Greenwood	...	...
18.	Rugby Town	M. C. Compton	...	...
19.	Rushden Town	W. J. Roberts	...	...
20.	Sheffield Transport Dept.	G. W. Hespe	...	...
21.	Silksworth Colliery	C. Devonport	...	...
22.	Wheatley Hill Colliery	W. R. Straughan	...	...
23.	Willesden Borough	C. McManus	...	...
24.	Wolverton Town	A. F. Brooks	...	...
25.	Wood Green Excelsior	W. L. Dolling	...	...

## 11.30 a.m.—In the Dance Hall

**Brass Band Contest for the "Daily Mirror" Challenge Cup, the "Pearson's Weekly" Challenge Shield and other Prizes**

*Adjudicators* :—D. ASPINALL  
J. EATON

### PRIZES

**FIRST PRIZE.**—THE *DAILY MIRROR* CHALLENGE CUP (subject to regulations), value Fifty Guineas, and a CASH PRIZE OF FIFTEEN POUNDS, and THE QUICKFIT PUBLISHING CO., LTD., 16 Jutland Avenue, Rochdale, will present twenty-six "BB Selection" Music Folios, bound in special waterproof materials, two gusset pockets, eyeletted and elastic, with name of winning band and instrument lettered on each folio in silver, valued at TWO POUNDS SIXTEEN SHILLINGS AND FOURPENCE.

**SECOND PRIZE.**—THE *PEARSON'S WEEKLY* CHALLENGE SHIELD (subject to regulations), value Fifty Guineas, and a CASH PRIZE OF TEN POUNDS, and Messrs. BOSWORTH & Co., LTD., 8 Heddon Street, Regent Street, London, W. 1, will present one silver-mounted Conductor's Baton, valued at TWO POUNDS.

**THIRD PRIZE.**—A CASH PRIZE OF SEVEN POUNDS.

**FOURTH PRIZE.**—A CASH PRIZE OF FIVE POUNDS.

**FIFTH PRIZE.**—A CASH PRIZE OF THREE POUNDS.

### SECTION 4. JUNIOR CUP "B" CONTEST

(Last Year's Winners: LOWERPLACE)

*Test Piece* ... Symphonic Legend, "Princess Nada" ... *Denis Wright*

No.	Band	Conductor	Draw	Result
1.	Aylesbury Printing Works	W. Smith	...	...
2.	Barnet Town	F. Dimmock	...	...
3.	Betteshanger Colliery Welfare	S. Fairfield	...	...
4.	Blaina New Lancaster Town	J. Probert	...	...
5.	Brandon Colliery	T. W. Collinson	...	...
6.	Bristol and District N.U.R.	H. S. Perry	...	...
7.	Brynmaur	D. J. Stevens	...	...
8.	Cambridge Town	R. E. Austin	...	...
9.	Cardiff Corporation Transport	D. Carrie	...	...
10.	Chislet Colliery	E. S. Carter	...	...
11.	Clifton & Lightcliffe Subscription	F. Berry	...	...
12.	Clayton Subscription	F. Berry	...	...
13.	Coventry Colliery	C. Shepherd	...	...
14.	House Dickinson	J. C. Dyson	...	...
15.	North Middlesex	J. C. Dyson	...	...
16.	Port Talbot Town	T. Brennan	...	...
17.	Rowntree's Cocoa Works	H. Lambeth	...	...
18.	Rushden Wesleyan Mission	M. F. Clark	...	...
19.	Snbston Colliery	J. W. Beniston	...	...
20.	Stanton Iron Works	J. Turner	...	...
21.	Summers' Steel Works	H. Parry	...	...
22.	Swindon G.W.R. S. & E. Union	J. G. Alder	...	...
23.	Taff Merthyr Colliery	J. Williams	...	...
24.	Thornley Colliery	E. G. T. Kitto	...	...

**Visitors are strongly recommended to get their tickets for the Massed Bands Concert during the day to avoid the rush and frequent disappointment which is likely to arise through leaving it too late.**



# COMING SHORTLY

*A repeat performance  
—in your own home*

Who wouldn't enjoy to-night's concert over again? You would. You CAN — as often as you wish. For "His Master's Voice" are here now, recording from this evening's programme. Records will be on sale at your dealers shortly — records that will re-create for you the performance you have heard to-night with that remarkable

**"MUSIC  
YOU SELECT  
YOURSELF"** freshness, volume and clarity of tone that only "His Master's Voice" recording can produce. Ask your "His Master's Voice" Dealer to let you hear them.

*And hear last year's band festival  
as though you were there to-night*



Here are three of the records made a twelve-month ago by "His Master's Voice" which reproduce the original with a reality that will bring back to you all your enjoyment of last year's performance.

- Chorale—"Belle Vue" (Iles) Gleneagle—  
March (Hawley) B8028. 2/6
- "Champion" March Medley (Ord Hume)  
Lead, Kindly Light ("Sandon") B8061. 2/6
- And The Glory (Messiah-Handel) Sweet and  
Low (Barnby) C2607. 4/-

## "His Master's Voice" Records

THE GRAMOPHONE COMPANY LIMITED, 98-108 CLERKENWELL ROAD, LONDON, E.C.1.



## 11.30 a.m.—In the Canadian Building

Brass Band Contest for the "Cassell's" Challenge Shield and other Prizes

Adjudicators:—G. H. MERCER  
F. SLEVIN

### PRIZES

FIRST PRIZE.—The CASSELL'S CHALLENGE SHIELD (subject to regulations), value Fifty Guineas, and a CASH PRIZE OF TEN POUNDS  
SECOND PRIZE.—A CASH PRIZE OF EIGHT POUNDS.  
THIRD PRIZE.—A CASH PRIZE OF FIVE POUNDS.  
FOURTH PRIZE.—A CASH PRIZE OF FOUR POUNDS.  
FIFTH PRIZE.—A CASH PRIZE OF THREE POUNDS.

### SECTION 5. JUNIOR SHIELD "A" CONTEST

(Last Year's Winners: CAMBRIDGE TOWN)

Test Piece ...	Selection, "Gems of Wagner No. 2" ...	Wagner
No.	Band	Conductor
1.	Barrington Colliery ...	M. Moore ...
2.	Black Dyke Mills Junior ...	H. Hepworth ...
3.	Boscombe ...	C. J. Young ...
4.	Burton ...	H. A. Reynolds ...
5.	Caterham ...	F. Snow ...
6.	Coventry Vauxhall W.M.C. ...	J. W. Cartwright ...
7.	Eccleston Subscription ...	J. C. Barlow ...
8.	Elliott's Metal Co. (I.C.I.) ...	H. Tidleswell ...
9.	Hayes and Harlington ...	T. Matson ...
10.	Haywards Heath Town ...	W. G. Bosley ...
11.	John Thompson Works ...	C. Butler ...
12.	King's Dyke and Whittlesey ...	G. Anker ...
13.	King's Lynn Town ...	E. Cox ...
14.	Lydney Town ...	H. Heyes ...
15.	Morrison Collieries ...	G. Slaigh ...
16.	Northfleet ...	J. C. Dyson ...
17.	Paulton ...	R. W. Kingman ...
18.	Redruth Town ...	C. H. Baker ...
19.	Saltaire ...	H. B. Hawley ...
20.	Shoreditch Borough United ...	A. Chandler ...
21.	Southampton Albion ...	J. Williamson ...
22.	South Moor Colliery ...	W. L. Turnbull ...
23.	Staines United Temperance ...	W. Sanders ...
24.	Stretford Old ...	J. Rogerson ...
25.	Towcester Studio ...	C. F. Brown ...
26.	Tredegar Workmen's ...	E. Shaw ...
27.	Ystradgynlais Public ...	T. C. White ...

## 11.30 a.m.—On the Terrace

Brass Band Contest for the "Iles" Challenge Shield and other Prizes

Adjudicators:—G. JONES  
J. OLIVER

### PRIZES

FIRST PRIZE.—THE ILES CHALLENGE SHIELD (subject to regulations), value Fifty Guineas, and a CASH PRIZE OF EIGHT POUNDS.  
SECOND PRIZE.—A CASH PRIZE OF SEVEN POUNDS.  
THIRD PRIZE.—A CASH PRIZE OF FIVE POUNDS.  
FOURTH PRIZE.—A CASH PRIZE OF THREE POUNDS.  
FIFTH PRIZE.—A CASH PRIZE OF TWO POUNDS.

### SECTION 6. JUNIOR SHIELD "B" CONTEST

(Last Year's Winners: KING'S LYNN TOWN)

Test Piece ...	Selection, "Gems of Wagner No. 2" ...	Wagner
No.	Band	Conductor
1.	Blaengarw ...	W. Jenkins ...
2.	Burton Excelsior ...	E. S. Cox ...
3.	Cannock Chase Colliery ...	H. Kennedy ...
4.	Canterbury City ...	J. Hamblin ...
5.	Copthorne ...	R. H. C. Young ...
6.	Coseley ...	E. Porter ...
7.	Crewkerne ...	C. W. L. Pinney ...
8.	Glastonbury Town ...	L. Abrams ...
9.	Grangewood ...	E. Headford ...
10.	High Wycombe Excelsior ...	A. Parslow ...
11.	Hook and Odiham ...	E. Shawyer ...
12.	Hoo St. Werburgh ...	R. Ellison ...
13.	Ilford (St. John Ambulance) ...	T. I. Doughty ...
14.	Knottingley ...	S. Marshall ...
15.	Lemington Glass Works ...	T. O. Hann ...
16.	Michelmersh ...	H. H. Laurence ...
17.	Netherfield L.N.E. Railwaymen's ...	J. Baldwin ...
18.	Romford ...	A. V. Creasey ...
19.	St. Stythians ...	T. Hubbard ...
20.	Salt Union, Ltd. (Winsford Wks.) ...	H. Mortimer ...
21.	Soham Comrades ...	F. J. Talbot ...
22.	Stanhope ...	J. Woodhall ...
23.	Strood Gospel Mission ...	A. Weller ...
24.	Thatcham and District ...	W. Woodward ...
25.	Thirsk and Sowerby ...	H. Kemp ...
26.	Tilbury Town ...	L. R. J. Nicholls ...

## 11.30 a.m.—In the School of Art

Brass Band Contest for the "Champion Journal" Challenge Cup and other Prizes.

Adjudicators:—G. CAVE  
W. NUTTALL

### PRIZES

FIRST PRIZE.—THE CHAMPION JOURNAL CHALLENGE CUP (subject to regulations) and a CASH PRIZE OF EIGHT POUNDS.  
SECOND PRIZE.—A CASH PRIZE OF SEVEN POUNDS.  
THIRD PRIZE.—A CASH PRIZE OF FIVE POUNDS.  
FOURTH PRIZE.—A CASH PRIZE OF THREE POUNDS.  
FIFTH PRIZE.—A CASH PRIZE OF TWO POUNDS.

### SECTION 7. JUNIOR SHIELD "C" CONTEST

(Last Year's Winners: CANNOCK CHASE COLLIERY)

Test Piece ...	Selection, "Gems of Schumann No. 2" ...	Schumann
No.	Band	Conductor
1.	Bath Spa Imperial ...	T. R. Thorne ...
2.	Bishops Stortford B.L. ...	D. H. Roberts ...
3.	Campden Town ...	G. S. Thomas ...
4.	Chatteris Town ...	R. Palmer ...
5.	Chichester City ...	E. D. Shepherd ...
6.	Cirencester ...	G. Churchman ...
7.	Crosland Moor ...	L. Wood ...
8.	Eynesbury and St. Neots ...	H. W. Cattmull ...
9.	Garlinge ...	J. Swan ...
10.	Glynn Vivian Miners' Mission ...	W. Lee ...
11.	Gravel Lane Methodist ...	W. Bowen ...
12.	Gwaun Cae Gurwen Juniors ...	D. Lloyd ...
13.	Hammersmith Borough ...	J. F. Forse ...
14.	Haslemere ...	H. J. Langridge ...
15.	Hoe Village ...	H. Smith ...
16.	Ilford Old ...	E. H. Alder ...
17.	Kingsbridge ...	W. G. Jerwood ...
18.	King's Cross ...	A. C. Lockerby ...
19.	North Evington Club & Institute ...	C. A. Anderson ...
20.	Redhill Town ...	R. H. C. Young ...
21.	Roepham Town ...	E. T. Ruffles ...
22.	2nd Coy. South Essex Batt. Boys' Brigade ...	H. J. Hurrell ...
23.	Shepherd's Bush ...	W. Baxter ...
24.	Sibley Town ...	L. W. Robins ...
25.	Snowdown Welfare ...	J. R. Hamblin ...
26.	Springfield Working Men's Club ...	H. Broster ...
27.	Thornton Heath ...	W. Mann ...
28.	Thornton ...	S. S. Iliffe ...
29.	Wicken Coronation ...	E. Avey ...
30.	Wincanton ...	A. H. Muddiman ...
31.	Wolsingham ...	J. Hall Elliott ...

# BEEVER'S UNIFORMS

National Band Contest  
September 29th, 1934  
at the Crystal Palace

VISIT OUR STAND—New Designs

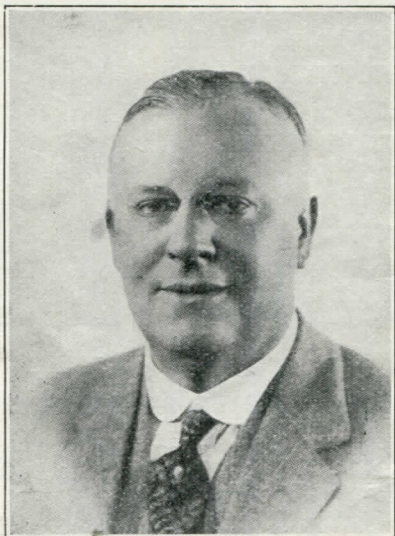
The smartest and most attractive Uniforms ever produced. Beever's have led the trade for over 70 years. They have been the originators of all new ideas, and without doubt they are the best Uniforms that money can buy. Better cloth, better fitting, better workmanship. They have a guarantee behind them; a reputation to keep up. Note address—write us:

**BEEVER'S**  
26 Aldermanbury, London, E.C.2  
Cloth Mills: Brook Street, Huddersfield



# BRASS BANDS APPEAL

IT has often been said that British brass band music is the national music of this country, and that the brass band is democracy's popular combination of musical instruments. Brass band music of to-day is a different thing from what it was prior to about twenty years ago, a period when that style of music was somewhat held in contempt by the then high-brow musician. During recent years, however, brass band music has been given a decided uplift in consequence of many great composers writing music for this style, much of it having been written for the many competitive festivals which nowadays take place.



MR. J. HENRY ILES

*Founder and Director of the National Band Contest, Crystal Palace, and Conductor of the Massed Bands at the Evening Festival Concert*

In 1930, Sir Edward Elgar composed a special test-piece (or suite of pieces) for the Brass Band Championship Festival which commemorated the twenty-fifth or silver jubilee of the National Brass Band Festival, held annually at the Crystal Palace, London. This composition has since been used as a test at many other festivals, besides being included in the concert repertoire of the majority of leading brass bands. Other composers of merit have, during recent years, composed some excellent music for the brass band, this class of music now comprising a list far more comprehensive than ever it was in the past.

In the early part of this century, brass band music was poor in quality, scarce and limited, consisting chiefly of marches and dance music, with a lesser proportion of miscellaneous items. Even the bands themselves were not looked upon as being more than of ordinary commonplace standard in the musical world, these being made up of performers who possessed very little musical ability, and little notice was taken of them by other branches of musical art.

Nowadays brass bands are recognised throughout the world as performers of importance, and probably cannot be displaced from the position of being con-

sidered the most popular exponents of the country's most real national music. Their services are in great demand for all manner of functions throughout the year, and they have a following far greater than any which is associated with other styles of band or other branches of music.

Brass band playing has advanced to such a standard that nothing but the best of music will suffice to enable adjudicators at festivals to decide the relative merits and placing of competing bands, by judging them on fine and delicate points of technique, for even the most difficult of compositions are played by the majority of competing bands in a manner in which there is scarcely any difference in the general interpretation.

Any band that is desirous of being well placed in competitive festivals to-day must possess both technical ability of a high standard and musical sense which is able to give performances of refinement and artistry. British brass bands have made tremendous strides during recent years, and possess among them the finest bands of this class in the world, this fact being recognised more and more by other nations who are interested in music. In this phase of musical art, it can be safely said that this nation leads the way to all the world, and in this particular respect can be classed as a real musical nation.

*(Oldham Chronicle.)*

## JOSHUA DUCKWORTH LTD.

STAND 21 (Main Isle)

SPECIAL OFFERS — TO-DAY ONLY

The

### "DEEP HARMONY HYMNARY"

1/- per book (Usual price 1/6)

### "DUCO" POST CARDS

in SEVEN SERIES. Each Series Contains:

#### FOUR HYMN TUNE GEMS

Price 6d. per packet

No. 1 Series includes "SUNSET," which will be played at to-night's Concert.

No. 6 Series includes "BELLE VUE," a charming Chorale by J. Henry Iles.

### BRASS BAND ARRANGEMENTS

of the "Deep Harmony Hymnary," and other renowned Hymn Tunes, price 1/9 per set (Usual Price 2/9); or any 3 sets 5/- (Usual Price 8/3).

The "Deep Harmony Selection" by Fred Royle  
The "Deep Harmony" Cornet Solo by Clifton Jones  
The "Irish Folk Tune" Cornet Solo by Frank Wright

**REDUCED PRICES TO-DAY ONLY**

Sole Publishers and Copyright Owners:

**JOSHUA DUCKWORTH LTD.**

**COLNE · LANCASHIRE**



## 6.30 p.m. ORGAN RECITAL by Mr. GATTY SELLARS

1. "At the Portals of the Palace" - - - - - *Gatty Sellars*  
Dedicated to Sir HENRY BUCKLAND.
2. Toccata - - - - - *- Boellmann*
3. "Venetian Idylle" - - - - - *Gatty Sellars*  
Dedicated to Mr. J. HENRY ILES.  
Barcarolle (suggesting Gondolas); Chorale ("St. Marks"); "On the Lido."
4. Military March - - - - - "Here's to London Town" - - - - - *Gatty Sellars*
5. "Hymn of Glory" - - - - - *Piedro Yon*

7 p.m.

## THE MASSED BANDS

BRIGHOUSE & RASTRICK                      HARTON COLLIERY  
CRYSTAL PALACE                              LUTON  
FODEN'S MOTOR WORKS                      SCOTTISH C.W.S.  
WINGATE'S TEMPERANCE  
Conductor - - - - - MR. J. HENRY ILES

### PROGRAMME

(NOTE.—Owing to the length of the programme encores will be strictly limited.)

1. (a) Fanfare - - - - -  
(b) The National Anthem - - - - -
2. March - - - - - "Excelsis" - - - - - *J. Foulds (arr. by J. Brier)*  
Dedicated to Mr. J. HENRY ILES.
3. Grand March from - - - - - "Tannhäuser" - - - - - *Wagner (arr. by S. Ord Hume)*  
(As specially adapted for recording.)
4. Tone Poem - - - - - "Coriolanus" - - - - - *Cyril Jenkins*  
This Band won the Second Prize in the Championship Section at last year's Contest.  
(SCOTTISH C.W.S. BAND. Conductor: G. HAWKINS)
5. Folk Dance - - - - - "May-Day Revels on the Village Green" - - - - - *S. Cope*  
From the Suite, "Rural Scenes in Days of Old."  
(a) Pastorale; (b) The Fiddler tuning-up; (c) The Dance.  
(Conducted by the Composer. See page 20)
6. Symphonic Prelude - - - - - "Prometheus Unbound" - - - - - *Granville Bantock*  
This was the Championship Test Piece for last year, for the performance of which the Band was awarded First Prize, being the fourth occasion on which it had won this distinguished honour.  
(FODEN'S MOTOR WORKS BAND. Conductor: F. MORTIMER)
7. March - - - - - "Medley March No. 2" - - - - - *Various*  
Introducing extracts from some of the most popular "Champion" Marches published.
8. Negro Spiritual - - - - - "Peter, go Ring Dem Bells" - - - - - *arr. by Granville Bantock*  
From Sir Granville Bantock's "Ten Negro Spirituals" for Male Voice Chorus, and arranged expressly for brass bands by special permission of the publishers, Novello & Co., Ltd.
9. "King's Herald and Jousts" from the Suite "Pageantry" - - - - - *Herbert Howells*  
This Suite was composed expressly for the 82nd Annual September Belle Vue Championship Contest, held on the 3rd September last, when this Band won the First Prize for the third year in succession. It is dedicated by the Composer to Mr. J. Henry Iles (the Director also of the Belle Vue Contests) and to the Worshipful Company of Musicians, of which Mr. Iles is the immediate Past-Master.

(BRIGHOUSE & RASTRICK. Conductor: M. WOOD)

[Continued on Page 17]





CRYSTAL PALACE. FROM S.E.

47644

# FELDMAN'S

15th LITTLE GREEN BOOK 15th  
OF SOLO CORNET PARTS OF  
THE SEASON'S SONG SUCCESSES

PRICE  
**6d.**

PRICE  
**6d.**

AS ISSUED TO MEMBERS OF THE FELDMAN BAND JOURNAL

### CONTENTS :-

	Brass Band	Brass and	Extra
	(20)	Reed Band	Parts
	(20)	(30)	Each
	s. d.	s. d.	
WAGON WHEELS ... .. (Entr'acte or Slow Fox-Trot)	2 6	3 9	2d.
BESIDE MY CARAVAN ... .. (Tango Fox-Trot)	2 6	3 9	2d.
DON'T SAY GOOD-NIGHT (From the First National and Vitaphone Picture, "Wonder Bar") (Waltz)	2 6	3 9	2d.
ROMAN SCANDALS. Fox-Trot Selection. (From the Film, "Roman Scandals.") Released by United Artists Introducing :- "Build a Little Home," "No More Love," "Keep Young and Beautiful"	2 6	3 9	2d.
CAFÉ IN VIENNA ... .. (Tango)	2 6	3 9	2d.
BALLERINA ... .. (Paso-Doble)	2 6	3 9	2d.
LONELY LANE ... .. (Slow Fox-Trot)	2 6	3 9	2d.
SHANGHAI LIL ... .. (Entr'acte or Slow Fox-Trot)	2 6	3 9	2d.
(From the Warner Bros. and Vitaphone Production, "Footlight Parade")			
PLAY TO ME GIPSY ... .. (Tango)	2 6	3 9	2d.
SITTIN' ON A BACKYARD FENCE ... .. (Fox-Trot)	2 6	3 9	2d.
(From Warner Bros. and Vitaphone Production, "Footlight Parade")			
HONEYMOON HOTEL ... .. (Fox-Trot)	2 6	3 9	2d.
(From the Warner Bros. and Vitaphone Production, "Footlight Parade")			
MY SONG GOES ROUND THE WORLD ... .. (March on the Popular Song)	2 6	3 9	2d.
BY A WATERFALL ... .. (Fox-Trot)	2 6	2 9	2d.
HEYKENS SECOND SERENADE ... .. (Entr'acte)	3 6	5 0	3d.
THERE'S A HOME IN WYOMIN' ... .. (Song Fox-Trot)	2 6	3 9	2d.
SUNDOWN IN A LITTLE GREEN HOLLOW ... .. (Fox-Trot)	2 6	3 9	2d.
THE SMILING PRINCE ... .. (Descriptive March or Quick Step)	2 6	3 9	2d.
IT'S TIME TO SING "SWEET ADELINE" AGAIN ... .. (Fox-Trot)	2 6	3 9	2d.
THE PAUL JONES ... .. (Dance)	2 6	3 9	2d.
OTHER DAYS { Selection, Including :- "I Fear No Foe," "La Gitana," "For You Alone," "Happy Darkies," "Barn Dance" }	6 0	9 0	4d.

All the above Hits HAVE BEEN FIRST RECEIVED BY THE FELDMAN BAND JOURNAL MEMBERS OF

Bandland's Most Progressive Service

Call or Write for Full Particulars and Latest Hits.

**B. FELDMAN & CO.,** 125, 127, 129 Shaftesbury Avenue, London, W.C. 2



CRYSTAL PALACE. FROM LOWER TERRACE.



## This Way to the Palace!

Trains  
every few  
minutes

# SOUTHERN ELECTRIC

Cheap  
Return  
Fares

CHEAP DAY RETURN TICKETS DAILY TO

## THE CRYSTAL PALACE

by ALL TRAINS\* from

LONDON BRIDGE 1/-	VICTORIA 1/-
HOLBORN VIADUCT 1/-	ST. PAUL'S 1/-
WATERLOO 1/1	

Also from numerous S.R. Suburban Stations.  
Bookings also to PENGES EAST and PENGES WEST  
\*(Weekdays after 9.30 a.m. Sundays and Bank Holidays all day)

**6d**

*Quickest Way Home!*  
CHEAP SINGLE TICKETS to LONDON (VICTORIA, LONDON BRIDGE  
and HOLBORN VIADUCT) available at Intermediate Stations

**6d**

Save Time and Money by

# SOUTHERN ELECTRIC



[Continued from Page 14]

10. Hymns - - - - - (a) "Sunset" - - - - - Handel Parker  
(b) "Pax Dei" - - - - - J. B. Dykes

These beautiful tunes are most impressive as rendered by the Massed Bands.

11. March from - - - - - "William Tell" - - - - - Rossini (arr. by J. Brier)  
This brilliant March from the Overture to this Opera is too well known to require any comment.

12. Chorus from "The Messiah" - "Lift Up Your Heads" - Handel (arr. by Frank Wright)  
This is in succession to the Chorus, "And the Glory of the Lord," which was so impressively rendered last year. It is but fitting that the Concert should terminate with such an inspiring work.

---

Seats, Prices - - - 2/-, 3/-, 4/- and 5/- including tax.

---

**SEATS CAN BE BOOKED FROM 10 a.m. AT THE CRYSTAL PALACE BOX OFFICE  
VISITORS ARE ADVISED TO BOOK EARLY**

**SPECIAL NOTICE !!** For the convenience of visitors to the National Band Festival, arrangements have been made to keep the Post Office open until after the awards have been announced. This information is not available until after the conclusion of the Evening Concert, and those desirous of utilising the facilities referred to will be able to dispatch their communications from the Post Office adjoining the Main Entrance, either by telephone, telegram or letter.

## JOHN IRELAND

The following details are collated from the brochure on Dr. Ireland, in the series of Miniature Essays on Musicians, published by J. & W. Chester, of Gt. Marlborough Street, London.

JOHN IRELAND was born in Bowdon, Cheshire, on August 13th, 1879. His father was a literary man and for some time Editor of a Manchester newspaper. In due course he became a pupil of Sir Charles Stanford at the Royal College of Music. In 1901 he left the College in possession of a sound technical equipment, but it is characteristic of him that he did not impose himself on the public until he felt that he possessed fully developed creative powers.

No section of high-class musical works seem to have come amiss to him, and his compositions range from the Symphonic to the Solo and Song species, and in each and all there is strong evidence of uncompromising artistic sincerity which profoundly stir the hearts and the intellects of those who respond to his appeal. He can be rugged and stern or exquisite and original in the simplest possible vein, as witness his "Downland Suite," which was the test piece for the Championship Section of the National Band Festival and Contest two years ago. Who can forget the vivid Prelude and by contrast graceful Minuet in this picturesque work.

Dr. Ireland has given the bands a second test piece for this year's Contest of a lighter texture, in respect of which Mr. J. H. Elliot has written in the British Bandsman of the 15th September, as follows:—

"The appearance of a new brass band work by John Ireland so soon after the splendid 'Downland' Suite is especially significant and encouraging. That a composer of Ireland's eminence, having written for the brass band, should be willing to repeat the experience so quickly, is a gratifying and stimulating thought. Moreover the 'Comedy' Overture in itself—it goes without saying—is a valuable addition to the brass band repertory.

"The work is something quite new where band music is concerned. I venture to think that, in the 'Comedy' Overture, many bandsmen will find themselves in an atmosphere unfamiliar to them. The principal challenge of the music is interpretative. Its philosophy, or its spiritual content—we can find many names for the music 'behind the notes'—is highly subtle.

"It is, of course, a 'concert overture' and we must guard against the obvious suggestions of the word 'comedy'; farce and burlesque are only branches of comedy, in which beauty, humanity and pathos have their places.

"There is wide variety within the unity of the 'Comedy' Overture. The ingenuity with which the thematic material is woven into one big pattern is a great delight; but the challenge to Championship contestants is not concerned only with attention to such details. The real difficulty will be to give point to the contrasts of the music without losing sight of the sweep of the whole." J. H. E.



JOHN IRELAND



# HERBERT HOWELLS

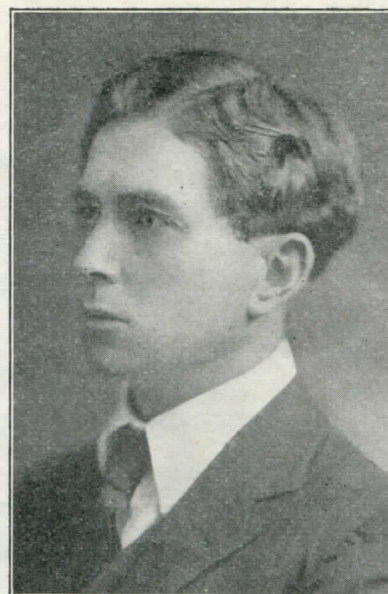
## “PAGEANTRY”

**H**ERBERT HOWELLS, the Composer of the Suite, “Pageantry,” included in to-night’s programme, was born at Lydney in Gloucestershire.

At the age of 13 he became a pupil of the late Dr. Herbert Brewer, then Organist at Gloucester Cathedral. Six years later he gained a scholarship by virtue of his compositions and commenced his studies under the late Professor Stanford, at the Royal College of Music.

He has written for all classes of vocal and instrumental music, but his first achievement in the domain of brass bands is the above-mentioned Suite, in which it is said that he makes its hearers more familiar with their characteristics, which are exploited musically and not conventionally.

It is not intended to deal at present with the atmosphere of this work, but it is sufficient to state that its key-note is chivalric pomp and circumstance.



Herbert Howells

(From an article by J. H. E., in the  
“British Bandsman,” Sept. 8th, 1934.)

### LIST OF CHAMPIONSHIP WINNING BANDS

- |   |   |
|---|---|
| 1900. DENTON ORIGINAL (Lancashire)      | 1907. WINGATE’S TEMPERANCE (Lancashire)   |
| 1901. LEE MOUNT (Yorkshire)             | 1908. IRWELL SPRINGS (Lancashire)         |
| 1902. BLACK DYKE MILLS (Yorkshire)      | 1909. SHAW (Lancashire)                   |
| 1903. BESSÉS O’ TH’ BARN (Lancashire)   | 1910. FODEN’S MOTOR WORKS (Cheshire)      |
| 1904. HEBBURN COLLIERY (Durham)         | 1911. CROSFIELD’S SOAP WORKS (Lancashire) |
| 1905. IRWELL SPRINGS (Lancashire)       | 1912. ST. HILDA (Durham)                  |
| 1906. WINGATE’S TEMPERANCE (Lancashire) |   |

It was at the 1913 Festival that an original piece of music for the Championship Test Piece was first introduced for Brass Band Contests. The names of the pieces and their composers, together with the winning bands and judges, are here set out in datal order :—

<i>Winning Band</i>	<i>Test Piece</i>	<i>Composer</i>	<i>Judges</i>
1913. IRWELL SPRINGS...	... “Labour and Love”	... Percy E. Fletcher	... P. E. Fletcher, Lt. Bilton, J. Ord Hume
1920. ST. HILDA	... “Coriolanus”	... Cyril Jenkins	... C. Jenkins, W. Reynolds, T. Eastwood
1921. ST. HILDA	... “Life Divine”	... Cyril Jenkins	... C. Jenkins, H. Bath, J. Carter
1922. HORWICH R.M.I.	... “Freedom”	... Hubert Bath	... H. Bath, Lt. Bilton, Lt. Hoby
1923. LUTON RED CROSS	... “Oliver Cromwell”	... H. Geehl	... H. Geehl, Lt. Bilton, H. Brian
1924. ST. HILDA	... “On the Cornish Coast”	... H. Geehl	... H. Geehl, J. H. Carter
1925. MARSDEN COLLIERY	... “Joan of Arc”	... Denis Wright	... D. Wright, Lt. Hoby
1926. ST. HILDA	... “An Epic Symphony”	... Percy Fletcher	... H. Bath, J. Brier
1927. CARLISLE ST. STEPHEN’S	... “The White Rider”	... Denis Wright	... E. Dunn, H. Geehl
1928. BLACK DYKE	... “A Moorside Suite”	... Gustav Holst	... Sir G. Bantock, H. Geehl, C. Jenkins
1929. CARLISLE ST. STEPHEN’S	... “Victory”	... C. Jenkins	... H. Brian, C. Jenkins, Dr. T. Keighley
1930. FODEN’S MOTOR WORKS	... “Severn Suite”	... Sir Edward Elgar	... H. Geehl, T. J. Rees, G. Nicholls
1931. WINGATE’S TEMPERANCE	... “Honour and Glory”	... Hubert Bath	... H. Bath, G. Mercer, C. Ward
1932. FODEN’S MOTOR WORKS	... “Downland Suite”	... John Ireland	... H. Geehl, J. Brier, H. Bennett
1933. FODEN’S MOTOR WORKS	... “Prometheus Unbound”	... Granville Bantock	... H. Bennett, J. Brier, H. Hind



## **NOTICE**

All enquiries in connection with the Festival can be made at the Directors Office facing the Concert Hall, or at the "British Bandsman" Stand adjacent thereto.

### **LIST OF EXHIBITORS IN SOUTH NAVE**

- ARMY & NAVY SUPPLY STORES,  
118/120 Praed Street, Paddington, W. 2.
- BANDSMAN'S PRESS LTD.,  
210 Strand, London, W.C. 2
- BEEVERS,  
26 Aldermanbury, London, E.C. 2.
- BESSON & Co., LTD.,  
"Prototype House," Frederick Close, Stanhope Place, Marble Arch, W. 2
- BOOSEY & HAWKES, LTD.,  
295 Regent Street, London, W. 1.
- BOSWORTH & Co., LTD.,  
8 Heddon Street, Regent Street, London, W. 1.
- CHAPPELL & Co., LTD.,  
50 New Bond Street, London, W. 1.
- DUCKWORTH, JOSHUA, LTD.,  
Manifold Printing Works, Colne, Lancs.
- FELDMAN & Co.,  
125 Shaftesbury Avenue, London, W.C.
- KEITH PROWSE & Co., LTD.,  
159 New Bond Street, London, W. 1.
- LAWRENCE WRIGHT MUSIC Co.,  
Denmark Street, Charing Cross Rd., W.C. 2.
- PHILPOT, A. M.,  
354 Beech Hill, Luton, Beds.
- QUICKFIT PUBLISHING Co.,  
16 Jutland Avenue, Rochdale.
- REYNOLDS, T., SENR. & SONS,  
43 Chapel Street, Salford, Manchester.
- SELMER, HENRI & Co. LTD.,  
12 Moor Street, Cambridge Circus, London, W. 1
- SMITH, R. & Co., LTD.,  
210 Strand, London, W.C. 2
- TOMKINS, F. & SON,  
71 Palmerston Road, Northampton.
- UNIFORM CLOTHING & EQUIPMENT Co., LTD.  
10/11 Clerkenwell Green, London, E.C. 1.
- WRIGHT & ROUND,  
34 Erskine Street, Liverpool.

## **BRASS BANDS PLAY DANCE MUSIC**

Modern popular music, including dance numbers, is a regular feature of all well-managed Brass Bands. The largest display known of instruments designed particularly for this class of work, including all the well-known makes, can be seen on the

## **Selmer Stand**

### **SAXOPHONES**

Selmer, Martin, Adolphe Sax.

### **CLARINETS**

Selmer, Sterling, Martin, Console.

### **TRUMPETS and TROMBONES**

Bach, Selmer, Olds, Martin, Manhattan, Rolls Diplomat.

### **GUITARS**

Maccaferri, Epiphone, Harmony.

### **PIANO ACCORDION**

Settimio Soprani, Cellini Curved.

ALSO FAMOUS

## **LEEDY DRUMS & TONED PERCUSSION**

See all these and many other peerless lines, including a vast array of tutors, music and indispensable accessories, at the

## **SELMER STAND NO. 7 & 8**

**HENRI SELMER & CO. LTD.**  
DAVIS BUILDINGS, 12 MOOR STREET  
LONDON, W.1                      GERrard 2575



**M**R. SAMUEL COPE is one of the G.O.M.'s of the Brass Band world. Practically the whole of his life has been spent in their interests and development, and as a Conductor, Composer and Writer he is most accomplished, and both his music and writings are greatly appreciated, not only in this country, but throughout the breadths and lengths of the British Empire.

Mr. Cope has a charming personality and has endeared himself to hosts of bandmen. He is the composer of "May-day Revels," appearing in this evening's programme for the Massed Bands, which I have asked him to conduct.

He has been my loyal friend and colleague for over 35 years, and I am glad to have the opportunity in this souvenir programme, of expressing my personal and grateful appreciation of his invaluable services

to the brass band cause, and I am only expressing the wish of tens of thousands in saying that we hope



MR. SAMUEL COPE

he may be spared for many years to come to continue these interests. J. HENRY ILES.

## THE CHAMPION JOURNALS, 1935

### THE CONCERT JOURNAL

	Set of 20 Parts	Extra Parts
Overture, "COMEDY," John Ireland ... (Full Score 5/-)	6/6	4d.
Suite, "PAGEANTRY," Herbert Howells... (Full Score 5/-)	6/6	4d.
Selection, "GEMS OF WAGNER," No. 2 ... (Full Score 4/-)	5/-	4d.
Chorus from "The Messiah," "LIFT UP YOUR HEADS," Handel ... ..	2/6	1 1/2d.
Introduction and March from "WILLIAM TELL," Rossini ... ..	5/-	4d.
Negro Spiritual, "PETER GO RING DEM BELLS," arranged Granville Bantock ...	2/3	1 1/2d.
March from "TANNHAUSER," Wagner ...	2/6	1 1/2d.
Intermezzo, "CIRCE," Manuel Bilton ...	2/3	1 1/2d.
"GREEK MARCH" (Characteristic), A. M. Goodhart ... ..	2/3	1 1/2d.
Song Solos: (a) "PASSING BY," E. C. Purcell: (b) "THANKS BE TO GOD," Stanley Dickson ... ..	2/6	1 1/2d.
Quick March, "ONE O' THE LADS," Dague Pryor ... ..	2/3	1 1/2d.
Fox-Trot, "GOOD-NIGHT, MY DARLING," Dague Pryor ... ..	2/3	1 1/2d.

SPECIAL SUBSCRIPTION PRICE

£1 - 10 - 0 for 20 Parts. Extra Parts 2/-

### THE PREMIER JOURNAL

	Set of 20 Parts	Extra Parts
Selection, "GEMS OF SCHUMANN," No. 2 (Full Score 4/-)	5/-	4d.
Valse, "MEMORIES OF STRAUSS" ...	5/-	4d.
Special Memorial, "IN MEMORIAM," Various ... ..	2/6	1 1/2d.
Serenade, "EDELWEISS," S. W. Ord Hume	2/3	1 1/2d.
Song Solos: (a) "THE SNOWY - BREASTED PEARL" (b) "THE LASS WITH THE DELICATE AIR" ...	2/3	1 1/2d.
"SEVEN CONGREGATIONAL HYMNS," Various ... ..	2/3	1 1/2d.
Quick March, "EXCELSIS," J. Foulds ...	2/3	1 1/2d.
Quick March, "PREMIER," S. Cope ...	2/3	1 1/2d.
Quick March, "CHAMPION" Medley No. 2, Various ... ..	2/3	1 1/2d.

SPECIAL SUBSCRIPTION PRICE

15/- for 20 Parts. Extra Parts 1/-

**R. SMITH & CO., LTD., 210 STRAND, LONDON, W.C. 2**



*J This Souvenir Programme  
is published annually by*

**The Photochrom Co.**

LTD.

Graphic Works

**Tunbridge Wells, Kent**

---

Details of advertising space  
available for next issue will  
be supplied on request to  
:: above address. ::

---

LETTER CARDS, POST CARDS, AND SOUVENIRS OF THE  
CRYSTAL PALACE PUBLISHED BY PHOTOCHROM CO., LTD.  
ARE ON SALE AT THE KIOSKS, IN THE CENTRE TRANSEPT.



# WHAT ARE THEY PLAYING?



## IT MUST BE A "WRIGHT" HIT!

YOU ALSO WILL BE ABLE TO PLAY THE MOST POPULAR TUNES DIRECTLY THEY ARE PUBLISHED BY JOINING  
**THE LAWRENCE WRIGHT BRASS AND MILITARY BAND CLUB**

Some of our most recent Hits include:

**LAZIN' HAPPY! I HATE MYSELF**  
**STAY A LITTLE CLOSER TO ME**  
**I'M YOUR SLAVE MEMORIES OF HOURS SPENT WITH YOU**  
**TRUST IN ME THE OLD COVERED BRIDGE**  
**ON WITH THE SHOW · 1934 SELECTION**

FULL PARTICULARS ON APPLICATION TO THE LAWRENCE WRIGHT STAND

**JUST RELEASED!**

## **THE "WRIGHT" CORNET BOOK No. II**

CONTAINING ALL THE LATEST AND MOST POPULAR HITS. GREATER VALUE THAN EVER. PRICE 6<sup>D</sup>. NET.

**LAWRENCE WRIGHT MUSIC CO., LTD.**

19 Denmark Street, Charing Cross Road, London, W.C.2

'Phone: TEMPLE BAR 2141 (5 lines)