

FULL LIST OF BANDS

# NATIONAL BAND FESTIVAL



THE ALEXANDRA PALACE

[Copyright Photochrom

## SOUVENIR PROGRAMME

### THE THIRTY-THIRD ANNUAL FESTIVAL

SEE PAGE 16 FOR PLAN OF ALEXANDRA PARK AND PALACE



Be sure to visit

# CHAPPELL'S MUSIC STALL

where you will find all

**THE LATEST & BEST FOR BRASS BANDS**

— AT SPECIAL TERMS FOR THIS DAY ONLY —

ALL THE MOST POPULAR SELECTIONS  
AND THE LATEST SUCCESSES  
CORNET SOLO BOOKS. NEW ALBUMS, ETC.

A hearty welcome awaits you, and your visit will be worth while.  
Always something new and attractive.

NOVELTIES READY FOR TO-DAY'S FESTIVAL

SELECTION FROM  
"SNOW WHITE AND THE SEVEN DWARFS"  
THE MOST POPULAR MUSICAL FILM EVER PRODUCED

SELECTION FROM "THE WHITE HORSE INN"  
ONE OF THE MOST SUCCESSFUL MUSICAL PLAYS OF TO-DAY

"A SCOTTISH FANTASY" by DENIS WRIGHT

NEW ALBUM OF FAMOUS CORNET SOLOS, ETC.

**MAKE YOUR DAY A COMPLETE SUCCESS**

By Joining at once the best of all Band Music Clubs

This will ensure your being kept up-to-date with the latest  
Intermezzi, Marches, Cornet Solos and outstanding Dance Successes.

Better Value Impossible

Subscription for Twelve Months' Membership

Brass Band (26 parts) - £1 10s. 0d. Brass and Reed Band (31 parts) - £1 15s. 0d.

Extra parts, each - 2s. 6d.

SIX MONTHS HALF ABOVE RATE

**CHAPPELL & CO. Ltd., 50 New Bond Street, London, W. 1**



ALEXANDRA PALACE

THE  
38th Anniversary of  
the Great National  
BAND FESTIVAL

(Being the Thirty-Third Band Contest)

SEPTEMBER 24th

1 9 3 8

*Under the Gracious Patronage of*  
HIS MAJESTY THE KING

*Director and Founder*

J. HENRY ILES, Esq.  
(Officier d'Academie Francaise)

COPYRIGHT PUBLICATION  
BY THE  
PHOTOCHROM CO., LTD.  
LONDON & ROYAL TUNBRIDGE WELLS, KENT

# **NATIONAL BRASS BAND CLUB**

and

## **LEAGUE OF BANDS' ASSOCIATIONS**

*PATRON :*

**JOHN HENRY ILES, Esq.**

*PRESIDENT :*

**HERBERT WOOD, Esq.**

---

**MEMBERSHIP OPEN TO BAND OFFICIALS & OTHERS  
INTERESTED IN THE BRASS BAND MOVEMENT**

---

Association officials and others are invited to  
call at the Club Room under the Organ.  
Entrance at back of Organ.

J. H. Kichenside, F.F.A.S.  
*Hon. Secretary*

H. H. Thomas  
*League Secretary*

Executive Offices,  
KINGSWAY HALL,  
LONDON, W.C. 2



THE MUSIC OF THE FALLS

ALL MUSIC STANDS AND PERCUSSION SET USED IN THE EVENING  
CONCERT KINDLY LOANED BY Messrs. BOOSEY AND HAWKES LTD.

# THE BATTLE OF THE BANDS

## Most Democratic Gathering in the World of Music

By *ANDREW YATES*

**T**HIS evening a visitor will hear an amazing number of accents, for enthusiasts crowd by special train, car and coach to the great National Band Contest, from Scotland and Durham in the North away to Sussex and Surrey in the South, from Norfolk and Essex in the East to Wales and Cornwall in the West.

Britain's brass bands know no frontiers of county, and this is the only annual assembly in London which may truthfully be described as a national affair. It is undoubtedly the most democratic event in the world of music, for although there are generally between 4,000 and 5,000 players competing and between 30,000 and 40,000 of their supporters follow them to Town, practically all, conductors, players and onlookers alike, are working men.

These brass band contests were instituted by Mr. J. Henry Iles with Sir Arthur Sullivan in 1900, and last year the former was present to conduct the massed bands at the festival. Since the early years of the century the skill of the players has increased remarkably, experts telling us that the general standard of efficiency has risen some 20 per cent.

The annual contest has grown out of all recognition, for while at the first meeting only 29 bands competed there are now getting on for 200. It has also had the effect of promoting interest in brass bands throughout Britain, and at the present time it is estimated there are over 160,000 members of bands in England alone, and that the value of their instruments amounts to close on £3,000,000.

At the Palace the value of the instruments used is about £100,000, and between 30 and 40 English counties are represented, in addition to Scotland and Wales. Some of the most famous bands come from the North. Durham, Lancashire and Yorkshire sometimes send nearly 50 entries between them, and London averages 20 bands. The highest honour is the Championship of Great Britain, which carries with it the National Challenge Trophy, valued at 1,000 guineas. Altogether there are some fifteen trophies, valued at over £2,000, cash prizes, and awards in kind.

The Thousand Guineas Trophy is well worth the winning, for it is of far greater value than its name suggests. It cannot be won outright, being held for a year, but it carries with it a prize of £50, and a medal for every member of the winning band. A champion band is a coveted distinction, for the winning of the honour means that important engagements come its way. It usually broadcasts and it obtains remuneration from gramophone companies for which it records.

Recently the Foden's Motor Works Band set up a great record in scoring their fifth victory, and their third successive win. (A band that wins the trophy for the fifth time is barred from competing in the succeeding year's contest, hence the band was absent in 1935.) They have been Champions in 1910, 1930, 1932, 1933, 1934, 1936 and 1937.

At one time the playing of brass bands was looked upon as something of a joke, but those days are past. Some of Britain's most eminent composers, including Sir Edward Elgar, Mr. Gustav Holst, Dr. John Ireland, and Sir Granville Bantock have composed test pieces for the Championship.

Intense enthusiasm reigns for weeks beforehand as this great event approaches, and often from humble homes all over Britain the strains of the test piece can be heard, as members of some bands are practising. The test pieces are not sent out until about a month before the contest, so that each band has an equal chance. Then concentrated practice starts, and each line may be played over perhaps as many as 60 times in succession.

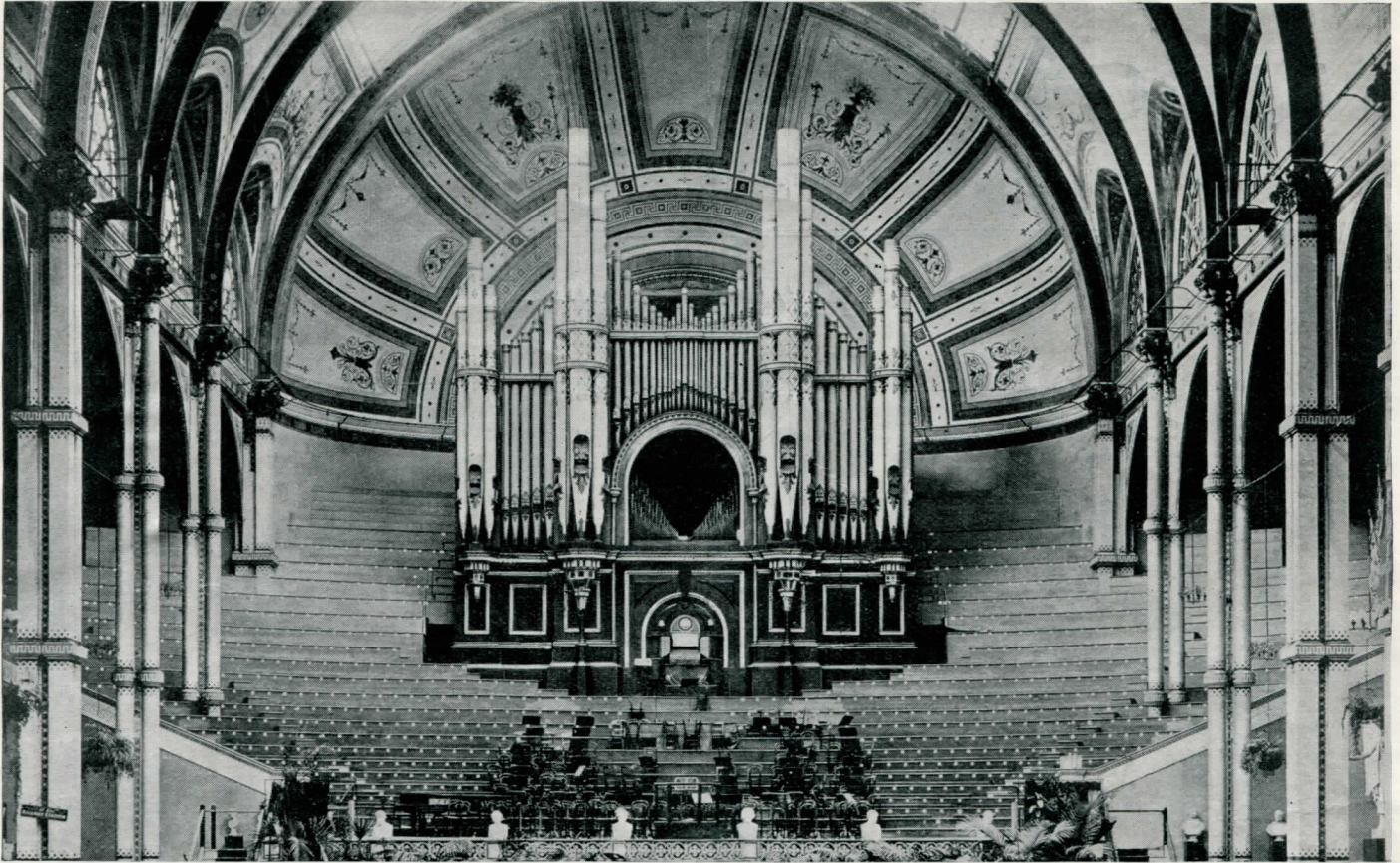
The bands are divided into sections, and each one's ambition is to increase in prowess so that eventually it is able to enter for the Grand Challenge Shield, which is competed for by about two dozen bands.

On the grand day the judges have their work fully cut out, for from about ten in the morning till six in the evening they are ceaselessly adjudicating, shut in little canvas "cells" guarded by policemen.

Nobody is allowed to speak to them, neither do they leave their "prisons." Shut off from the outside world they thus have no means of telling which bands are playing.

In ninety-nine cases out of a hundred, the maintenance of the bands which play at the Palace is more a labour of love than of profit. Frequently the members have to contribute liberally out of their own pockets so that their bands can carry on, and sacrifice some of the luxuries of life in order to be able to attend the festival.

Some amazing stories of the enthusiasm of the players and local residents are told. Last year, for instance, two competitors walked over a hundred miles in order to get to the contest—and one had not long been out of hospital. Then, when the band from Thirsk and Sowerby had completed its rehearsals, so that the members would not have to appear without uniform, a local fund was started and the money was obtained in practically no time.



THE ORGAN, ALEXANDRA PALACE

Copyright Davey

## LEW DAVIS

*introduces sensational "brass"!*



Come over to the King  
Instrument Stand and see  
these new developments  
in your instruments.



*Postal enquiries to:*

**KING INSTRUMENT CO., LTD.**

8 MOOR STREET, LONDON, W.1

Telephone: Gerrard 1608

## WISE BANDS SPEND WISELY

*Send us your enquiries for*

INSTRUMENTS  
REPAIRS  
SILVER-PLATING  
CASES  
FITTINGS  
DRUMS  
EFFECTS, Etc.

---

*£10,000 stock for you to choose from*  
*Lists now ready* *Post Free*

---

**MAYERS & HARRISON**

Clarendon Street, Manchester 15

'Phone: Central 1088 (3 lines)

# The Great Championship Contest

for the

## CRYSTAL PALACE ONE THOUSAND GUINEA TROPHY

**LAST YEAR'S WINNER**  
**FODEN'S MOTOR WORKS**

### 11.45 a.m.—SECTION 1.—CHAMPIONSHIP. CONCERT ROOM.

Grand Championship Brass Band Contest for the Crystal Palace One Thousand Guinea Challenge Trophy, the "Daily Telegraph" Challenge Cup, and the W. W. Grant Memorial Cup and other Prizes.

*Adjudicators* :—H. BENNETT  
 F. WRIGHT  
 H. GEEHL (*Referee*)

### PRIZES

**FIRST PRIZE.**—FIFTY POUNDS, the THOUSAND GUINEA TROPHY for the Championship of Great Britain and the Colonies, and a Bronze Medal with bar and clasp for every Member of the Band. (Members of the Band winning the Trophy twice will be presented with Solid Silver Medals, and Members of the Band winning the Trophy three times will be presented with Solid Gold Medals) and Messrs. THE UNIFORM CLOTHING & EQUIPMENT Co., LTD., 10 & 11 Clerkenwell Green, London, E.C.1, will present one Bandmaster's Frockcoat Suit complete, design to be selected by the winner, to the value of TEN GUINEAS, and Messrs. WRIGHT & ROUND, 34 Erskine Street, Liverpool, will present to the Resident Bandmaster, one *Brass Band News* Gold Medal, valued at FOUR GUINEAS, and A GREAT LOVER OF THE

EUPHONIUM (lady) will present to the Euphonium Soloist of the winning band, a Special Box filled with Cigarettes.

**SECOND PRIZE.**—FORTY POUNDS, and the *DAILY TELEGRAPH* CHALLENGE CUP, and Messrs. B. FELDMAN & Co., 125 Shaftesbury Avenue, London, W.C., will present to the Resident Bandmaster, one Conductor's Gold-mounted Baton.

**THIRD PRIZE.**—THIRTY POUNDS, and the W. W. GRANT MEMORIAL TROPHY.

**FOURTH PRIZE.**—TWENTY-FIVE POUNDS.

**FIFTH PRIZE.**—TWENTY POUNDS.

### 1. CHAMPIONSHIP CONTEST

**TEST PIECE:** AN EPIC SYMPHONY ... .. *Percy E. Fletcher*

No.	Band	Conductor	Draw	Result	No.	Band	Conductor	Draw	Result
1.	Baxendale's (Manchester) Works ... ..	F. Mortimer	...	.....	11.	Foden's Motor Works ... ..	F. Mortimer	...	.....
2.	Besses o' th' Barn ... ..	W. Wood	...	.....	12.	Hanwell ... ..	J. C. Dyson	...	.....
3.	Bickershaw Colliery ... ..	F. Mortimer	...	.....	13.	Harton Colliery ... ..	W. Lowes	...	.....
4.	Black Dyke Mills ... ..	W. Halliwell	...	.....	14.	Irwell Springs ... ..	J. Jennings	...	.....
5.	Blackhall Colliery ... ..	N. Thorpe	...	.....	15.	Luton ... ..	F. Mortimer	...	.....
6.	Brighouse and Rastrick ... ..	W. Halliwell	...	.....	16.	Metropolitan Works ... ..	H. Heyes	...	.....
7.	Carlisle St. Stephens ... ..	W. Lowes	...	.....	17.	Morris Motors ... ..	S. V. Wood	...	.....
8.	Creswell Colliery ... ..	H. Moss	...	.....	18.	Munn & Felton's Works ... ..	W. Halliwell	...	.....
9.	Crystal Palace ... ..	D. Wright	...	.....	19.	Rushden Temperance ... ..	T. Young	...	.....
10.	Enfield Central ... ..	E. S. Carter	...	.....	20.	Scottish C.W.S. ... ..	J. A. Greenwood	...	.....
					21.	Sheffield Transport Dept. ... ..	G. W. Hespe	...	.....
					22.	Wingate's Temperance ... ..	W. Halliwell	...	.....

Admission to Concert Hall ... .. **TWO SHILLINGS**

The Director's Office is in the Eastern Entrance Hall. At "The BRITISH BANDSMAN" Stand can be obtained "THE BOOK OF TEST PIECES"—Price 1/-.

**FOR FULL REPORTS AND RESULTS OF THE CONTEST ORDER THROUGH ANY NEWSAGENT THE "BRITISH BANDSMAN" WEEKLY**

The Head Quarters of the National Brass Band Club will be under the organ. Entrance at back of organ and Clubroom will be available for members and friends. Mr. J. H. Kichenside, the Hon. Secretary, will be pleased to welcome them.

Visitors are strongly recommended to get their tickets for the Massed Bands Concert during the day to avoid the rush and frequent disappointment which is likely to arise through leaving it too late.



# A TRIBUTE TO JOHN HENRY ILES

BY ERNEST E. MILNER

**M**R. J. HENRY ILES, the Director and Founder of the National Brass Band Festival, is a very remarkable personality. I have had the honour of meeting many famous people, but if I were asked to say who was the most remarkable man I had met, the claim of John Henry Iles would be too strong for me to overlook.

However, that is not my object. I am writing, uninvited, as a tribute to the man himself, and I feel I am justified in undertaking this task, for long before I met him personally, I had come to his famous Crystal Palace Festival, and actually played in a winning band in a junior section. Later, and particularly the last four years, I have had occasion to meet him at this Festival, and found he had a jovial personality, with a wealth of knowledge behind that broad, efficacious smile of his—which, by the way, goes out to all and is not chosen for the few; in fact, I believe he would more readily bestow his geniality and help on the plain uniform Bandsman than one in any higher station of life.

He is, unquestionably, a born organiser, and happily for the brass band world, has a great love of music, which manifested itself from his earliest days.

He was never happy unless he was organising something, and even when a schoolboy on his holidays, spent his time carrying through all sorts of schemes for charities, many of them in association with music. Before he was sixteen years of age, indeed, he took in hand and carried through successfully, a mixed choir of eighty voices, and having a good voice himself, did a lot of solo singing at charity concerts. He was, by the way, a pupil at the same time as the late Dame Clara Butt, of the late Dr. Rootham, Director of the famous Bristol Madrigal Society.

Being, therefore, a musical enthusiast, one can imagine the effect made upon his mind, when, with a certain reluctance, he was persuaded to go to Belle Vue for the September Championship Contest in 1898. Like most Southerners of those days the word "Brass Band" conveyed to him nothing but blare and anything but concords of sweet music.

When he realised, after a great deal of scepticism, that these bands consisted entirely of British working men musicians, one can almost hear him say, as he did to a friend (Mr. Cope) at the time: "I will make the whole country ring with the genius and musicianship of these brass bands."

The wonderful development and progress which



J. HENRY ILES, Esq.

*Founder and Director, National Band Festival*

has been made since the foundation of the National Brass Band Festival, at the Crystal Palace, and last year removed to the Alexandra Palace, through the disastrous fire to our beloved "home" at Sydenham, has justified very fully indeed the words he expressed on that occasion.

The story has been told many times, how, after surmounting many difficulties, he succeeded in getting into touch with, and winning over to the Brass Band cause, Sir Arthur Sullivan, which led to the great concerts given by the Championship Brass Bands of England, at the Royal Albert Hall, under such distinguished patronage, and then the first Festival at the Crystal Palace in 1900. At these events Sir Arthur conducted the massed

bands.

There is no doubt, however, that one of the most important steps in connection with these developments was the determination of Mr. Iles, in 1913, to introduce original test pieces, written by eminent British composers, specially for brass bands, and this has led to a fine library of these original works. Until then the brass band movement had either been neglected or overlooked by the musical profession, and much of the life of Mr. Iles has been in connection with brass bands to put this right.

One of his efforts in this direction has been to present, annually, a silver challenge trophy and cash prizes to the students of Kneller Hall, for original brass band compositions, his idea being that when the bandmasters leave the Army they might be encouraged to take an interest in any brass band in their neighbourhood.

Mr. Iles has, as is well known, succeeded in getting some of the greatest musicians to write original test pieces for these National Festivals, including: Sir Edward Elgar, Sir Granville Bantock, Gustav Holst, Dr. Ireland, Mr. Arthur Bliss, Mr. Herbert Howells, Dr. Keighley, Dr. Maldwyn Price, Percy Fletcher, Henry Geehl, Hubert Bath, Kenneth A. Wright, and Denis Wright, and he still encourages and presses this fine work. Similarly, Mr. Iles has consistently sought for an improvement in the raising of the musical standard of the brass band generally.

Another great reform for which Mr. Iles is responsible is the compulsory attendance in uniform of all bands at the National Festival, and Belle Vue, Manchester, Band Contest. There are now few bands worthy of the name in this country who do not don an

## 11.30 a.m. SECTION 2.—GRAND SHIELD. DANCE HALL.

**Brass Band Contest for the "Daily Express" Challenge Shield and "The People" Challenge Shield and other Prizes**

*Adjudicators* :—J. BRIER  
R. MALDWYN PRICE

### PRIZES

FIRST PRIZE.—TWENTY POUNDS, and the *DAILY EXPRESS* CHALLENGE SHIELD.  
SECOND PRIZE.—FIFTEEN POUNDS, and the *PEOPLE* CHALLENGE SHIELD.  
THIRD PRIZE.—TWELVE POUNDS.  
FOURTH PRIZE.—TEN POUNDS.  
FIFTH PRIZE.—EIGHT POUNDS.

*Test Piece* ... Heroic Rhapsody, "Owain Glyndwr" ... R. Maldwyn Price

No.	Band	Conductor	Draw	Result
1.	Barrow Shipyard	H. Sutcliffe	...	...
2.	Bolsover Colliery	S. Jennings	...	...
3.	Brancepeth Colliery	J. B. Wright	...	...
4.	Cardiff Corporation Transport	H. Nuttall	...	...

No.	Band	Conductor	Draw	Result
5.	Coxlodge Institute	G. Snowdon	...	...
6.	Crookhall Colliery	J. J. Stobbs	...	...
7.	Craghead Colliery	J. Smith	...	...
8.	Dunlop Works	W. A. Tomlinson	...	...
9.	Edge Hill L.M.S.	J. A. Greenwood	...	...
10.	Fairey Aviation Works	H. Mortimer	...	...
11.	Flockton United	E. Thorpe	...	...
12.	Great Central & Metropolitan	F. Dimmock	...	...
13.	Horden Colliery	J. D. Sooin	...	...
14.	Horsham Borough	J. C. Dyson	...	...
15.	Raunds Temperance	O. Pentelow	...	...
16.	Rhyl Town	T. Morris	...	...
17.	St. Dennis	C. H. Baker	...	...
18.	Silksworth Colliery	W. H. Cowell	...	...
19.	Swanwick Collieries	F. Skidmore	...	...
20.	Tullis Russell	J. H. Haldane	...	...
21.	Walsend United Collieries	G. Hawkins	...	...
22.	Wood Green Excelsior	W. L. Dolling	...	...
23.	Yorkshire Copper Works	W. Wood	...	...
24.	Ystalyfera Town	E. J. Evans	...	...

## 11.30 a.m. SECTION 3.—JUNIOR CUP "A." THE GROVE BANDSTAND.

**Brass Band Contest for the "Daily Sketch" Challenge Cup and the "New Chronicle" Trophy and other Prizes**

*Adjudicators* :—H. C. HIND  
F. ROGAN

### PRIZES

FIRST PRIZE.—FIFTEEN POUNDS, and the *DAILY SKETCH* CHALLENGE CUP.  
SECOND PRIZE.—TEN POUNDS, and the *NEWS CHRONICLE* TROPHY.  
THIRD PRIZE.—EIGHT POUNDS.  
FOURTH PRIZE.—SIX POUNDS.  
FIFTH PRIZE.—FIVE POUNDS.

*Test Piece* ... Overture, "Comedy" ... John Ireland

No.	Band	Conductor	Draw	Result
1.	Backworth Collieries Workmen's	G. Ramsden	...	...
2.	Blaengarw	W. Jenkins	...	...
3.	Butterley Co.'s Ambulance	J. C. Webster	...	...

No.	Band	Conductor	Draw	Result
4.	Canal Ironworks	G. Collison	...	...
5.	Croydon Borough	J. W. Simpson	...	...
6.	Edmonton	W. Tyrrell	...	...
7.	Erith British Legion	W. Sloane	...	...
8.	Hull British Oil & Calke Mills	C. S. Moon	...	...
9.	John Dickinson (Apsley)	J. C. Dyson	...	...
10.	Llanely	C. Ward	...	...
11.	Meltingriffith	T. J. Powell	...	...
12.	Newbiggin Colliery	J. Foulds	...	...
13.	Newcastle Corporation Transport	C. Ward	...	...
14.	Northfleet	E. S. Carter	...	...
15.	Rugby Steam Shed	E. C. Moore	...	...
16.	Shildon L.N.E.R. Works	T. W. Collinson	...	...
17.	Sibston Colliery	J. W. Beniston	...	...
18.	South Moor Colliery	W. L. Turnbull	...	...
19.	Stanton Ironworks	J. Turner	...	...
20.	Yiewsley and West Drayton	G. Turner	...	...

## 11.30 a.m. SECTION 4.—JUNIOR CUP "B." THE PALM COURT.

**Brass Band Contest for "The Daily Mirror" Challenge Cup, "the Pearson's Weekly" Challenge Cup and other Prizes**

*Adjudicators* :—A. YOULD  
A. H. MUDDIMAN

### PRIZES

FIRST PRIZE.—TEN POUNDS, and the *DAILY MIRROR* CHALLENGE CUP.  
SECOND PRIZE.—EIGHT POUNDS, and the *PEARSON'S WEEKLY* CHALLENGE CUP.  
THIRD PRIZE.—SIX POUNDS.  
FOURTH PRIZE.—FIVE POUNDS.  
FIFTH PRIZE.—FOUR POUNDS.

*Test Piece* ... Overture, "Comedy" ... John Ireland

No.	Band	Conductor	Draw	Result
1.	Armada Public	J. B. Fullerton	...	...
2.	Ashby Public Subscription	W. H. Kendall	...	...
3.	Burnhope Colliery	J. Johnson	...	...
4.	Dunfermline Town	G. J. Grant	...	...

No.	Band	Conductor	Draw	Result
5.	Fishponds (Bristol) B.L.	I. S. Perry	...	...
6.	Hayes and Harlington	G. Thompson	...	...
7.	John Thompson's Works	C. Butler	...	...
8.	Leeds Model	N. Sidebottom	...	...
9.	Leyton Borough	A. E. Stevens	...	...
10.	Luton Public	E. S. Carter	...	...
11.	Lycett Mission	F. Dimmock	...	...
12.	North Middlesex	J. C. Dyson	...	...
13.	North Seaton Workmen's	W. S. Bond	...	...
14.	Reading Spring Gardens	C. A. Anderson	...	...
15.	Sheringham Temperance	F. Wallwork	...	...
16.	Sidmouth Town	R. W. Davison	...	...
17.	Soham Comrades	F. J. Talbot	...	...
18.	Southampton Albion	J. Williamson	...	...
19.	Staines United Temperance	W. J. Sanders	...	...
20.	Stourton Memorial	C. Wilkinson	...	...
21.	Strood Mission	R. Crombie	...	...
22.	Taversal Colliery	T. Parkes	...	...
23.	Wolverton Town	J. Kitchener	...	...
24.	Yorkshire Transport	E. Thorpe	...	...

## 11.30 a.m. SECTION 5.—JUNIOR SHIELD "A." GRANDSTAND ON RACE COURSE.

### JUNIOR SHIELD "A" (1) PRIZES

FIRST PRIZE.—EIGHT POUNDS, and "*CASSELL'S SATURDAY JOURNAL*" CHALLENGE SHIELD.  
SECOND PRIZE.—SIX POUNDS.  
THIRD PRIZE.—FIVE POUNDS.  
FOURTH PRIZE.—FOUR POUNDS.

*Test Piece* ... Selection No. 2, "Carmen" ... Bizet

No.	Band	Conductor	Draw	Result
1.	Boscombe	C. J. Young	...	...
2.	Chislet Colliery Welfare	H. Stanier	...	...
3.	Dinnington Main Colliery	P. Fearley	...	...
4.	Easington Colliery	N. Thorpe	...	...
5.	Glastonbury Town	L. A. Leavey	...	...
6.	Grangewood	W. Baldwin	...	...
7.	Griff Colliery	F. W. Locker	...	...
8.	Middlewich Centenary	W. Brady	...	...
9.	Morrison and Busty Collieries	H. Haigh	...	...
10.	Ogmore Valley Temperance	W. H. Weale	...	...
11.	Pontyemmer Town	F. H. I. Badminton	...	...
12.	Radcliffe Borough	W. Riley	...	...
13.	Rochester City	H. Laycock	...	...
14.	Romford Borough	E. H. Allder	...	...
15.	Ryhope Colliery	R. Clark	...	...
16.	Salisbury City	S. Clarke	...	...
17.	Skewen	C. Jones	...	...
18.	Tredegar Workmen's Town	S. Mounfield	...	...

*Adjudicators* :—G. W. GARE  
J. BODDICE

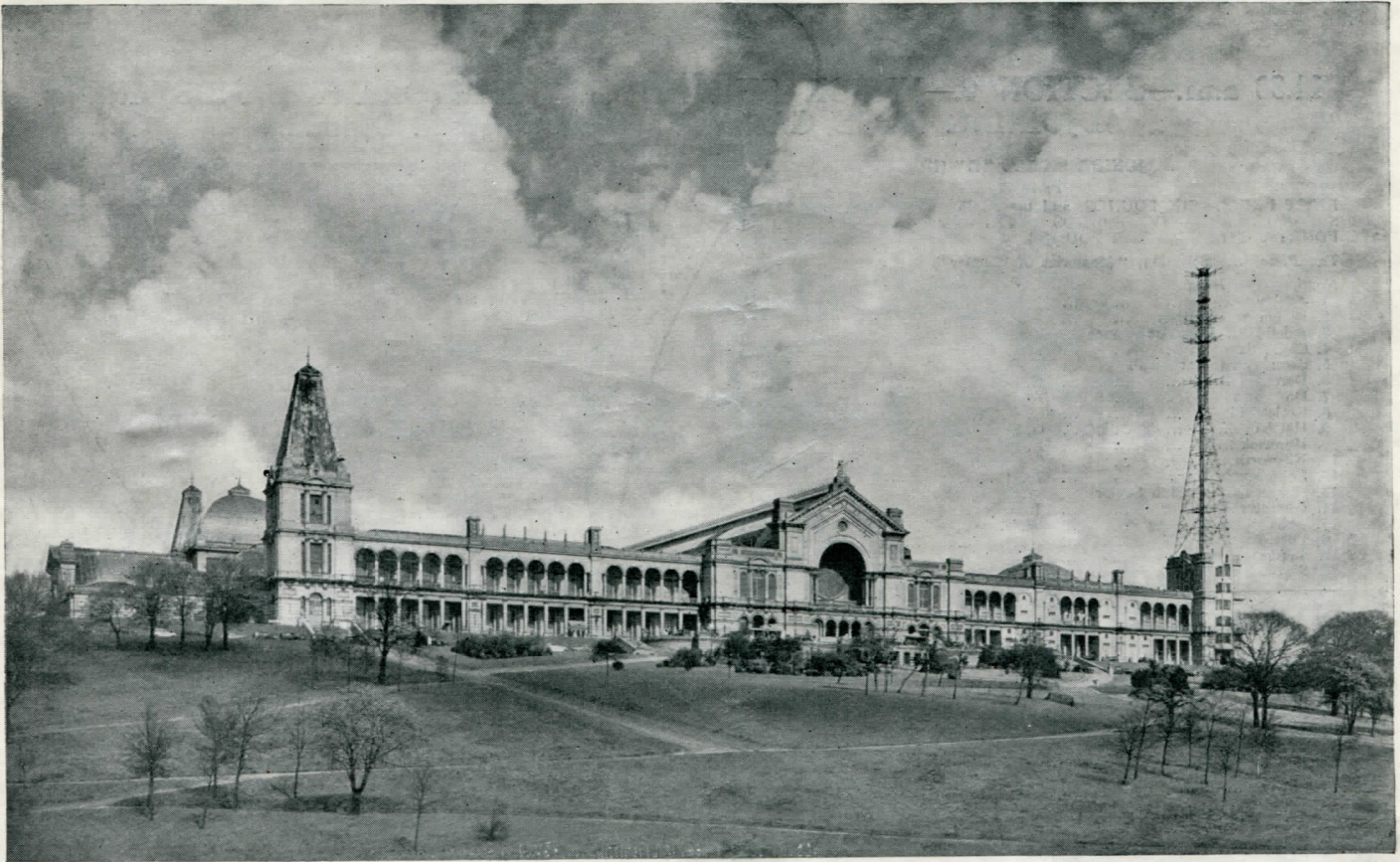
### JUNIOR SHIELD "A" (2) PRIZES

FIRST PRIZE.—EIGHT POUNDS, and *CHRISTIE* CUP.  
SECOND PRIZE.—SIX POUNDS.  
THIRD PRIZE.—FIVE POUNDS.  
FOURTH PRIZE.—FOUR POUNDS.

*Test Piece* ... Selection No. 2, "Carmen" ... Bizet

No.	Band	Conductor	Draw	Result
1.	Aldbourne	F. Dimmock	...	...
2.	Askern	W. Tams	...	...
3.	Baldwin's Workmen's	W. Jenkins	...	...
4.	Bishop's Stortford B.L.	A. J. Ashpole	...	...
5.	Bradwell United	J. E. Johnson	...	...
6.	Cockerton	C. Shiff	...	...
7.	Drayton B.L.	J. Singleton	...	...
8.	Eynesbury and St. Neots	H. W. Cattmull	...	...
9.	Garlinge	J. Swan	...	...
10.	King's Lynn Town	R. Smalls	...	...
11.	Lambeth Borough	G. Daley	...	...
12.	St. Stythians	T. Hubbard	...	...
13.	Swindon G.W.R. Staff Association	J. G. Alder	...	...
14.	Varteg	J. H. Tipton	...	...
15.	Welwyn Garden City	D. H. Richards	...	...
16.	West Hartlepool Old Operatic	J. Parker	...	...
17.	West London	A. Ashcroft	...	...

Visitors are strongly recommended to get their tickets for the Massed Bands Concert during the day to avoid the rush and frequent disappointment which is likely to arise through leaving it too late.



Copyright Davey

THE ALEXANDRA PALACE

PRICE

6<sup>D.</sup>

# FELDMAN'S 19<sup>TH</sup> LITTLE GREEN BOOK 19<sup>TH</sup>

PRICE

6<sup>D.</sup>

## OF SOLO CORNET PARTS OF THE SEASON'S SONG SUCCESSES

ALL NUMBERS IN THIS BOOK ARE PUBLISHED SEPARATELY FOR BRASS BAND AND BRASS AND REED BAND AT THE FOLLOWING PRICES—

### CONTENTS

	Brass Band (20)	Brass and Reed Band (30)	Extra Parts Each
CRY, BABY, CRY ... ..	2/6	3/9	2d.
CHINESE LAUNDRY BLUES ... ..	2/6	3/9	2d.
CATHEDRAL IN THE PINES ... ..	2/6	3/9	2d.
YOU'RE AN EDUCATION ... ..	2/6	3/9	2d.
GOOD-NIGHT, SWEET DREAMS, GOOD-NIGHT ... ..	2/6	3/9	2d.
REMEMBER ME ... ..	2/6	3/9	2d.
(From the Mervyn Le Roy Production. Presented by First National, "Mr. Dodd Takes the Air")			
YOU CAN'T STOP ME FROM DREAMING ... ..	2/6	3/9	2d.
TWO DREAMS GOT TOGETHER ... ..	2/6	3/9	2d.
EVERYTHING YOU SAID CAME TRUE ... ..	2/6	3/9	2d.
ROMANCE OF THE ROSE ... ..	2/6	3/9	2d.
BROKEN-HEARTED CLOWN ... ..	2/6	3/9	2d.
I KNOW NOW (From the Warner Bros. Production, "The Singing Marine") ... ..	2/6	3/9	2d.
THE SONG OF THE MARINES (From the Warner Bros. Production, "The Singing Marine") ... ..	2/6	3/9	2d.
IN THE MISSION BY THE SEA ... ..	2/6	3/9	2d.
WE'RE VERY FOND OF THE NAVY ... ..	2/6	3/9	2d.
HOLIDAY OF THE TOYS ... ..	2/6	3/9	2d.
WITH MY SHILLELAGH UNDER MY ARM ... ..	2/6	3/9	2d.
MOSQUITOES' PARADE ... ..	3/6	5/-	3d.
TIGER RAG ... ..	3/6	5/-	3d.
OLD TIMERS ... ..	6/-	9/-	4d.

Including :—"Won't You Come Home, Bill Bailey," "Champagne Charlie," "After the Ball was Over," "Git yer Hair Cut," etc.

THE ABOVE ARE ONLY A FEW OF OUR REIGNING SUCCESSES

SEND FOR A COMPLETE LIST

\* Published by arrangement with THE AVENUE MUSIC PUBLISHING CO., LTD.

ALL THE ABOVE HITS have been first received by THE FELDMAN BAND JOURNAL SUBSCRIBERS TO

**B. FELDMAN & CO., 125-7-9 Shaftesbury Avenue, LONDON, W.C.2**

Telephone: Temple Bar 5532 (4 lines)

Telegrams & Cables: "Humfriv, W.C., London."

## 11.30 a.m.—SECTION 6.—JUNIOR SHIELD "B." TEMPORARY BANDSTAND ADJOINING ROSE GARDEN. (Near Football Ground.)

Adjudicators :—T. EASTWOOD  
A. S. GRANT

### JUNIOR SHIELD "B" (1) PRIZES

FIRST PRIZE.—SIX POUNDS, and the *ILES* CHALLENGE SHIELD.  
SECOND PRIZE.—FIVE POUNDS. THIRD PRIZE.—FOUR POUNDS.  
FOURTH PRIZE.—THREE POUNDS.

No.	Band	Conductor	Draw	Result
1.	Aveley	L. R. J. Nicholls		
2.	Blaina and District	J. Probert		
3.	Bristol St. John Ambulance	T. Cozens		
4.	Chatteris Town	F. J. Talbot		
5.	Cwm Town Workmen's	W. L. Rogers		
6.	Dereham B.L.	G. H. Slaughter		
7.	Dodworth	A. H. Bucklow		
8.	Ecclesfield	G. H. Frith		
9.	Hetton	G. Scorer		
10.	Hunwick	F. Gibson		
11.	Kibworth	C. Moore		
12.	Letchworth Town	W. T. Northwood		
13.	Norwich Lads' Club Senior	W. D. Breame		
14.	Oswestry Excelsior	J. Hager		
15.	Philadelphia Colliery	W. Swann		
16.	Port Talbot Town	R. Lucas		
17.	Shotton Model	T. Wood		
18.	Swanwick Collieries Junior	R. Little		

### JUNIOR SHIELD "B" (2) PRIZES

FIRST PRIZE.—SIX POUNDS, and the *BRITISH BANDSMAN* CHALLENGE CUP.  
SECOND PRIZE.—FIVE POUNDS. THIRD PRIZE.—FOUR POUNDS.  
FOURTH PRIZE.—THREE POUNDS.

No.	Band	Conductor	Draw	Result
1.	Abercarn Welfare	T. Morgan		
2.	Branksome and Parkstone	W. Goldsmith		
3.	Bromley Borough	S. J. G. Craker		
4.	Bude Town	W. M. Pearce		
5.	Caterham	J. Bosley		
6.	Elland	N. Crompton		
7.	Great Bentley	J. W. Smith		
8.	High Wycombe Excelsior	S. A. G. Parslow		
9.	Newbury Town	P. G. Dyson		
10.	Northampton Town	F. Murdin		
11.	Snowdon Colliery Welfare	W. Lee		
12.	Stamford Town	F. A. Short		
13.	Turner's Hill and Worth	J. H. Chantler		
14.	Uxbridge and Hillingdon	H. J. Easey		
15.	West Stanley Town	J. Ward		
16.	Woodhouse	H. Cook		

## 11.30 a.m.—SECTION 7.—JUNIOR SHIELD "C." TEMPORARY BANDSTAND ADJOINING PUTTING GREEN.

Adjudicators :—W. NUTTALL  
D. ASPINALL

### JUNIOR SHIELD "C" (1) PRIZES

FIRST PRIZE.—SIX POUNDS, and the *ORD HUME* CHALLENGE CUP.  
SECOND PRIZE.—FIVE POUNDS. THIRD PRIZE.—FOUR POUNDS.  
FOURTH PRIZE.—THREE POUNDS.

No.	Band	Conductor	Draw	Result
1.	Calne Town	F. A. Fields		
2.	Crewkerne	C. W. L. Pinney		
3.	Glynn Vivian Miners' Mission (Deal)	R. Aston		
4.	Heacham and District	G. J. Holland		
5.	Hereford City	E. Pritchard		
6.	Hooe Village	A. H. Sargent		
7.	Hoo St. Werburgh	E. Poynter		
8.	Horley Town	H. Cooper		
9.	Leatherhead Town	C. J. Murrell		
10.	Malling Town	W. J. Foreman		
11.	Okehampton Borough	E. Ogden		
12.	Pillowell	H. Ambrey		
13.	Rainham W.M.C.	C. J. Heward		
14.	Redhill Town	R. H. C. Young		
15.	Reepham	E. T. Ruffles		
16.	Shrewton	J. King		
17.	Sunny Brow Colliery	R. White		
18.	Wroughton and District	J. E. Garratt		
19.	Wroughton Silver	F. Richards		

### JUNIOR SHIELD "C" (2) PRIZES

FIRST PRIZE.—SIX POUNDS, and the *CHAMPION JOURNAL* CHALLENGE CUP.  
SECOND PRIZE.—FIVE POUNDS. THIRD PRIZE.—FOUR POUNDS.  
FOURTH PRIZE.—THREE POUNDS.

No.	Band	Conductor	Draw	Result
1.	Bisley Boys' School	C. W. Fitch		
2.	Chatham Borough	J. Lewis		
3.	Cirencester	G. Churchman		
4.	Drybrook and District	C. F. Meek		
5.	Hornchurch' L.C.C. Children Homes	A. V. Creasey		
6.	New Ealing	A. Davies		
7.	Radlett	M. Hutchinson		
8.	Royston Town	F. Greenhill		
9.	2nd South Essex Co. B.B.	H. J. Hurrell		
10.	Thurrock (Junior)	E. C. Merrick		
11.	Wareham Town	S. C. Brooks		
12.	Wellington (Somerset) Town	J. C. Baker		
13.	Woodfalls Junior	A. Green		

*Continued from page 7.]*

attractive uniform ; many, in fact, equalling the best of our military bands. This has done much to raise the respect and admiration of the general public.

Perhaps the greatest appeal to the public of the National Brass Band Festival is the great concert given by the massed bands in the evening, and which have always, until last year, been staged on the famous Handel Orchestra. Now, however, the massed bands assemble in the huge "fan" Orchestra of the Concert Hall at the Alexandra Palace, and it is a wonderful sight to see the thousands of people also massed, as far as the eye can see, listening to the picked Bands giving stirring and beautiful pieces of music, rendered in a way quite impossible by any other form of musical combination ; and for close on thirty-five years Mr. Iles has conducted these massed bands—a fine showman, and his handling of these massed bands has done much to intensify the thrill and enjoyment of the immense crowd.

Forward, then, Brass Bands!—and let us hope that Mr. J. Henry Iles will continue to carry on the good work—a good leader makes the journey much easier.

ERNEST E. MILNER.

*Continued from page 4.]*

Some now world-famous brass bands passed through many crises when young. The noted Wingate's Temperance Band, for instance, nearly went out of existence because it could not afford to buy instruments. When their dilemma was made known, the enthusiasm of the local populace was such that sufficient funds were raised to enable it to continue. It afterwards beat the renowned Besses o' th' Barn Band, which has twice been round the world and won the Championship on three occasions.

Another well-known band, Irwell Springs, was so poor that at first its members had to use a bedstead as a music stand, and the Kingston Mills Band was only saved from extinction by an enthusiast who gave its members free tuition in his own house.

[Reprinted from the *Western Mail and Echo* by kind permission of Mr. J. A. Sandbrook, Editor-in-Chief].

**SPECIAL OFFER**

**3 NEW DENIS WRIGHT  
BRASS BAND ARRANGEMENTS**

**1. THE BELLS OF St. MARY'S**

Intermezzo. Based on Emmett Adams Famous Song

**2. FLYING HIGH** by HERMAN DOSTAL

The Famous Continental Standard March Success

**3. GRANADA** by LEO TORRENCE

London's Big March Success

*Specimen Cornet Solos sent Free on application*

Published Price

**2/6 each**

**SPECIAL OFFER**

**25%**

Discount

or The 3 for

**5/-**

**ASCHERBERG, HOPWOOD & CREW, LTD.**

16 Mortimer Street, LONDON, W. 1

**DUCKWORTH'S CELEBRATED**

**'DEEP HARMONY' BRASS BAND  
AND OTHER FAMED PUBLICATIONS  
ARE PROCLAIMED TO BE ON THE TOP**

including :

Chorale Prelude "Deep Harmony" by Denis Wright	4/6	Post Free	Brass Band Sets Nos. 1, 2, 6 by Handel Parker	2/9	Post Free each
Fantasia "Sunrise to Sunset" by Geo. Hawkins	4/6		" " " Nos. 5, 7 by J. Ord Hume	2/9	
Cornet Solo "Jenny Wren" by Roland Davis	3/6		" " " Nos. 8, 9 by Frank Wright	2/9	
" " "Irish Folk Tune" by Frank Wright	3/-		" " " No. 10 by James Brier	2/9	
" " "Deep Harmony" by Clifton Jones	3/-		" " " No. 11 by H. B. Hawley	2/9	
Selection "Deep Harmony" by Fred Royle	4/6				
Chorus "Great Dagon" by Geo. Thompson	3/-				
<b>"SCORING FOR BRASS BAND"</b>			The <b>"DEEP HARMONY HYMNARY"</b> book		
A wonderful book by DENIS WRIGHT 4/6			Music and Words of 17 Hymn Tunes 1/8		

Please send for LIST No. 35 for full details of our publications.

Also Gramophone Records for many of the above.

**JOSHUA DUCKWORTH LIMITED** Colne Lane, COLNE  
: LANCASHIRE :



Continued from Page 12]

8. Hymns (a) - - - - "Praise my Soul" - - - - - Goss  
(b) - - - - "Glory to Thee my God This Night" - - - - - Tallis  
(c) - - - - "Pax Dei" - - - - - J. B. Dykes

9. Hallelujah Chorus - - - - (from "The Messiah") - - - - - Handel  
This glorious work for bands has been included in response to very many requests.

10. Tone-Poem - - - - "Labour and Love" - - - - - Fletcher  
The earlier portions portray the state of mind of a man who, having no love for his work, fancies himself "down-trodden." Then comes the wife's loving and uplifting appeal (Cornet Solo). She has her troubles but meets them with a smile. He now realises he has a purpose in life—  
LABOUR AND LOVE.

This work was composed expressly for brass bands.  
(MUNN & FELTON'S WORKS BAND. Conductor: S. H. BODDINGTON)

11. March - - - - - "Patriotic" - - - - - Arr. by S. Cope  
The March introduces "Hearts of Oak" and "Here's a Health Unto His Majesty" and concludes with the National Anthem as a counter-melody.

---

Seats, Prices - - - - 2/-, 3/- and 4/-

---

**SEATS CAN BE BOOKED FROM 10 a.m. AT THE ENQUIRY OFFICE  
AT THE EASTERN AND WESTERN ENDS OF THE PALACE.**

**VISITORS ARE ADVISED TO BOOK EARLY**

**Large numbers were disappointed last year by leaving booking too late.**

---

---

## PERCY FLETCHER

BORN ABOUT 1880

DIED, SEPTEMBER 10th, 1932

### The Composer of the Test Piece, **AN EPIC SYMPHONY**

**T**WENTY-FIVE years ago Percy Fletcher started the series of original test pieces by acknowledged national composers, with his charmingly melodious and scholarly tone-poem, "Labour and Love," which is included in this evening's Massed Band Concert programme.

In 1926 he also composed specially for this series of contests the test piece, *An Epic Symphony*, which has been adopted for to-day's Championship Section in honour of his memory.

The work is not based on any poetic or historical programme, but is suggestive. It is divided into three sections:—(i) Recitare, (ii) Elegy, and (iii) Heroic March.

The *First Movement* is in the form of an instrumental Recitative, in which Solo passages, sometimes declamatory and sometimes reflective, are contrasted with Tuttis of a fiery and rugged character.

The *Second Movement* opens and closes with a theme of a mournful, solemn nature, and between these presentations occur appealing and sensitive passages which are developed into a climax of emotional intensity.

The *Third Movement* commences with an elaborate fanfare; this leads into a strong, rhythmic, martial subject, which in turn gives place to one in the style of a Chorale, interspersed with light figures of ornamentation. The movement is carried on by means of a development of these subjects, and ends in a broad, massive statement of the Chorale.

It should be noted that all the themes bear some melodic resemblance to each other, although they are so widely different in character, and this is due to the fact that they are all derived from one germ idea. In this way the composer has sought to bind the work together and establish it as a symphonic conception.

It may be mentioned here, for the benefit of those purchasing this programme and the score of the test piece that, owing to the number of entries in this section and to the length of the contest piece, it has been found essential to delete a portion of the work. To this end the last movement (March) will start at figure 25 on the score and solo cornet copy.

## LIST OF CHAMPIONSHIP WINNING BANDS

- |   |   |
|---|---|
| 1900. DENTON ORIGINAL (Lancashire)      | 1907. WINGATE'S TEMPERANCE (Lancashire)   |
| 1901. LEE MOUNT (Yorkshire)             | 1908. IRWELL SPRINGS (Lancashire)         |
| 1902. BLACK DYKE MILLS (Yorkshire)      | 1909. SHAW (Lancashire)                   |
| 1903. BESSES O' TH' BARN (Lancashire)   | 1910. FODEN'S MOTOR WORKS (Cheshire)      |
| 1904. HEBBURN COLLIERY (Durham)         | 1911. CROSFIELD'S SOAP WORKS (Lancashire) |
| 1905. IRWELL SPRINGS (Lancashire)       | 1912. ST. HILDA (Durham)                  |
| 1906. WINGATE'S TEMPERANCE (Lancashire) |   |

It was at the 1913 Festival that an original piece of music for the Championship Test Piece was first introduced for Brass Band Contests. The names of the pieces and their composers, together with the winning bands and judges, are here set out in datal order:—

<i>Winning Band</i>	<i>Test Piece</i>	<i>Composer</i>	<i>Judges</i>
1913. IRWELL SPRINGS...	... "Labour and Love" ...	... Percy E. Fletcher ...	P. E. Fletcher, Lt. Bilton, J. Ord Hume
1920. ST. HILDA ...	... "Coriolanus" ...	... Cyril Jenkins ...	C. Jenkins, W. Reynolds, T. Eastwood
1921. ST. HILDA ...	... "Life Divine" ...	... Cyril Jenkins ...	C. Jenkins, H. Bath, J. Carter
1922. HORWICH R.M.I.	... "Freedom" ...	... Hubert Bath ...	H. Bath, Lt. Bilton, Lt. Hoby
1923. LUTON RED CROSS	... "Oliver Cromwell" ...	... H. Geehl ...	H. Geehl, Lt. Bilton, H. Brian
1924. ST. HILDA ...	... "On the Cornish Coast" ...	... H. Geehl ...	H. Geehl, J. H. Carter
1925. MARSDEN COLLIERY	... "Joan of Arc" ...	... Denis Wright ...	D. Wright, Lt. Hoby
1926. ST. HILDA ...	... "An Epic Symphony" ...	... Percy Fletcher ...	H. Bath, J. Brier
1927. CARLISLE ST. STEPHEN'S	"The White Rider" ...	... Denis Wright ...	E. Dunn, H. Geehl
1928. BLACK DYKE ...	... "A Moorside Suite" ...	... Gustav Holst ...	Sir G. Bantock, H. Geehl, C. Jenkins
1929. CARLISLE ST. STEPHEN'S	"Victory" ...	... C. Jenkins ...	H. Brian, C. Jenkins, Dr. T. Keighley
1930. FODEN'S MOTOR WORKS	"Severn Suite" ...	... Sir Edward Elgar ...	H. Geehl, T. J. Rees, G. Nicholls
1931. WINGATE'S TEMPERANCE	"Honour and Glory" ...	... Hubert Bath ...	H. Bath, G. Mercer, C. Ward
1932. FODEN'S MOTOR WORKS	"Downland Suite" ...	... John Ireland ...	H. Geehl, J. Brier, H. Bennett
1933. FODEN'S MOTOR WORKS	"Prometheus Unbound" ...	... Granville Bantock ...	H. Bennett, J. Brier, H. Hind
1934. FODEN'S MOTOR WORKS	"Comedy" ...	... John Ireland ...	H. Geehl, W. Reynolds, F. Wright
1935. MUNN & FELTON'S WORKS	"Pride of Race" ...	... Kenneth A. Wright ...	J. Brier, F. Wright, A. Wood
1936. FODEN'S MOTOR WORKS	"Kenilworth" ...	... Arthur Bliss ...	H. Bennett, W. Reynolds, Walton O'Donnell
1937. FODEN'S MOTOR WORKS	"Pageantry" ...	... Herbert Howells ...	J. Brier, F. Wright, H. Geehl

Next Week's Issue of

## THE BRITISH BANDSMAN

will contain the full results of today's Contests, also special reports and impressions—

Wholesale Agents:  
**W. H. SMITH & SON**

**MAKE SURE YOU ORDER YOUR COPY**



## LIST OF TRADE EXHIBITORS

1938

- ARMY & NAVY SUPPLY STORES,  
153 Praed Street, Paddington, London, W. 2.
- BANDSMAN'S PRESS LTD.  
210 Strand, London, W.C. 2.
- BEEVER, JAMES & CO., LTD.,  
Brook Street, Huddersfield.
- BESSON & CO., LTD.,  
"Prototype House," Frederick Close, Stanhope  
Place, Marble Arch, London, W.
- BOOSEY & HAWKES, LTD.,  
295 Regent Street, London, W. 1.
- CHAPPELL & Co., LTD.,  
50 New Bond Street, London, W.
- FELDMAN & Co., LTD.,  
125 Shaftesbury Avenue, London, W.C.
- KEITH PROWSE & Co., LTD.,  
159 New Bond Street, London, W.
- KING INSTRUMENT Co., LTD.,  
8 Moor Street, London, W.1.
- KITCHEN, R. S., LTD.,  
29 & 31 Queen Victoria Street, Leeds.
- MAYERS & HARRISON,  
52 Clarendon Street, Oxford Rd., Manchester, 15.
- PHILPOT, A. M.  
354 Beech Hill, Luton, Beds.
- PREMIER MUSICAL INDUSTRIES,  
Premier House, Golden Square, Piccadilly Circus,  
London, W. 1.
- REYNOLDS, T. SENR.,  
43 Chapel Street, Salford 3, Manchester.
- TOMPKINS & SON,  
Palmerston Road, Northampton.
- UNIFORM CLOTHING & EQUIPMENT Co., LTD.,  
10 & 11 Clerkenwell Green, London, E.C.1.
- WRIGHT & ROUND,  
34 Erskine Street, Liverpool.

## DO YOU WANT——A JOB?

A Band?  
A Bandmaster?  
A Player?  
A Professional Conductor?  
An Adjudicator?  
An Instrument?

### ADVERTISE in the "B. B." SMALL ADVERTS and get the QUICKEST AND BEST RESULTS

Small Advertisements:

20 words - - 2/-	3 Insertions - - 5/-
30 words - - 3/-	3 Insertions - - 7/6
40 words - - 4/-	3 insertions - - 10/-

Box Numbers 6d. extra

Latest time for Small adverts—Wednesday, 10 a.m.

Offices:

210 Strand, London, W.C. 2

Telephone - - CENTral 1166

## LATEST PUBLICATIONS FOR BRASS BAND

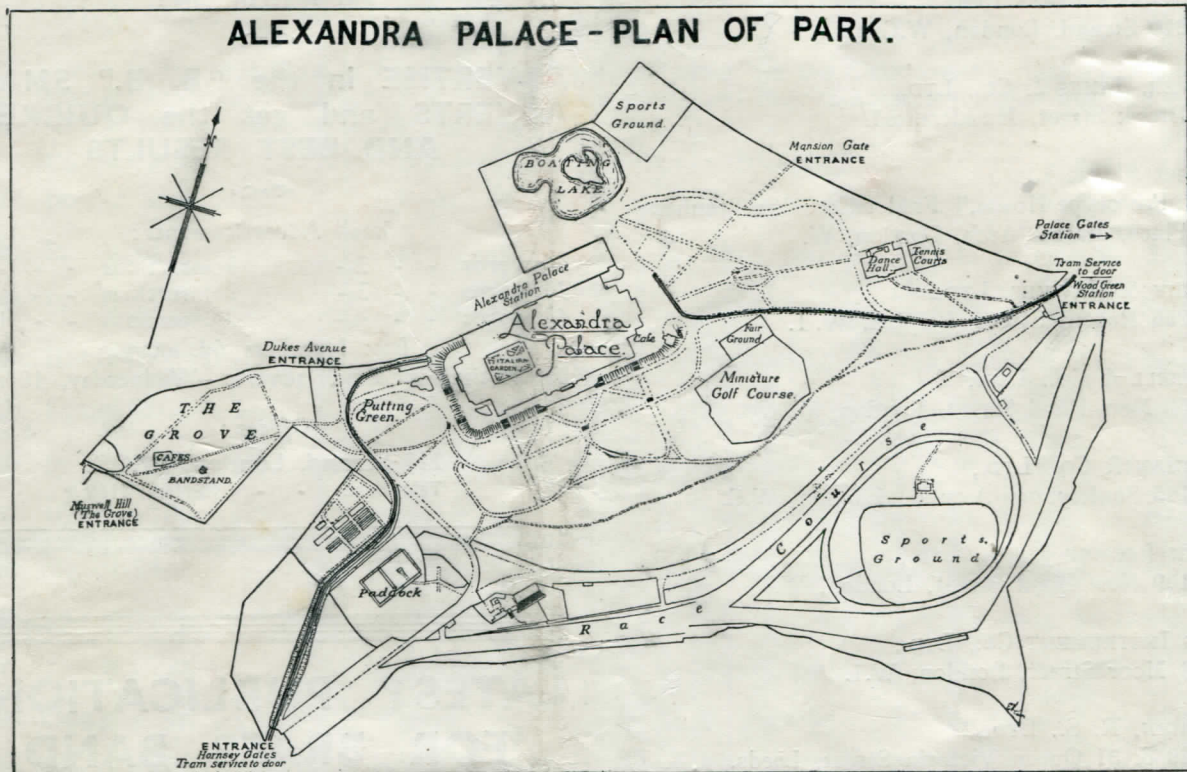
- "ACADEMIC FESTIVAL OVERTURE"—Brahms (arr. Denis Wright)
- HEROIC RHAPSODY, "OWAIN GLYNDWR" (R. Maldwyn Price)
- "THE ROYAL WATER MUSIC"—Handel-Harty (arr. Sam Holt)
- SELECTION, "BALLADS OF THE TWENTIETH CENTURY" (arr. Frank Wright)
- SELECTION, "LOVING-CUP MEMORIES" (arr. George Ison)
- "HULDIGUNGSMARSCH"—Grieg (arr. Walter Reynolds)
- CHORUS, 1. "O FATHER WHOSE ALMIGHTY POWER"  
2. "AND GRANT A LEADER BOLD"  
from "JUDAS MACCABÆUS"—Handel (arr. J. Brier)
- "SOLVEIG'S SONG"—Grieg (arr. F. Mortimer)
- SPANISH DANCES NOS. 1 AND 2—Moszkowski (arr. S. Myers)
- CORNET DUET-CAPRICE, "JACK AND JILL" (S. Cope)
- QUICK MARCH, "THE BLACK DIAMOND" (J. Whittle)
- QUICK MARCH, "STEADFAST" (Jacques Lafont)

For Prices write to:

**R. SMITH & CO. LTD.**  
210 STRAND, LONDON, W.C. 2

# NATIONAL BAND FESTIVAL

## SITUATION OF BANDS



Haycock Press Ltd.  
Neate Street, Camberwell, S.E. 5

Based upon the Ordnance Survey Map, with the sanction of the Controller of H.M. Stationery Office

- |                 |   |  |
|-----------------|---|--|
| Championship    | - | Alexandra Palace.  |
| Grand Shield    | - | Dance Hall.  |
| Junior Cup A    | - | The Grove.   |
| "    "    B     | - | Palm Court in the Palace.                                |
| Junior Shield A | - | Race Course Grand Stand, near the paddock.               |
| "    "    B     | - | On the right of the Sports Ground near the Boating Lake. |
| "    "    C     | - | The Putting Green.                                       |

---

---

# RE-VISIT LONDON!

NIGHT TRAVEL TICKETS

AT HALF FARES TO

# LONDON

BY L·N·E·R

<i>From</i>		<i>From</i>	
Barnsley . . . . .	22/10	Newcastle . . . . .	35/8
Bishop Auckland . . . . .	32/7	North Shields . . . . .	36/9
Blyth . . . . .	37/10	Seaham . . . . .	34/8
Chester-le-Street . . . . .	34/2	Seaham Harbour . . . . .	34/8
Consett (via Newcastle) . . . . .	37/3	Sheffield . . . . .	21/0
Cullercoats . . . . .	36/9	South Shields . . . . .	35/8
Darlington . . . . .	31/6	Stockport . . . . .	23/4
Durham . . . . .	33/7	Stockton . . . . .	31/6
Ferryhill . . . . .	32/7	Sunderland . . . . .	34/8
Harrogate . . . . .	26/3	Thornaby . . . . .	31/6
Hartlepool . . . . .	33/1	Tyne Dock . . . . .	35/8
Hebburn . . . . .	35/8	Tynemouth . . . . .	36/9
High Shields . . . . .	35/8	Walkergate . . . . .	36/3
Horden . . . . .	33/7	Wallsend . . . . .	36/3
Huddersfield . . . . .	24/2	Warrington . . . . .	24/2
Jarrow . . . . .	35/8	West Hartlepool . . . . .	33/1
Liverpool . . . . .	26/0	Whitley Bay . . . . .	36/9
Manchester . . . . .	24/2	Wigan . . . . .	25/6
Middlesbrough . . . . .	31/6	York . . . . .	25/2
Monkseaton . . . . .	36/9		

EVERY NIGHT BY SPECIFIED TRAINS  
RETURN ANY NIGHT WITHIN 17 DAYS  
OF DATE OF ISSUE—SEE HANDBILLS

---

---

---

**THERE MUST BE  
A REASON ● ●**

FOR THE CONTINUOUS ENROLMENT OF NEW MEMBERS TO THE

# **WRIGHT BAND JOURNAL**

**MONTH AFTER MONTH!**

**YEAR AFTER YEAR!!**

IF YOU CAN SEE THE BENEFITS DERIVED IN RECEIVING REGULARLY EACH MONTH AN AVERAGE OF TWO ISSUES, CONSISTING OF MARCHES—ENTRACTES—INTERMEZZOS AND POPULAR DANCE SUCCESSES OF THE DAY, BEFORE THEY ARE GENERALLY RELEASED AND AT A CONSIDERABLE SAVING OF MONEY—SEND FOR DETAILS

**DURING THE CURRENT SUBSCRIPTION YEAR MEMBERS HAVE RECEIVED THE FOLLOWING VARIED ISSUES**  
(BRASS BAND PRICES SHOWN ARE CHARGED TO NON-MEMBERS)

THE BLACKPOOL WALK	2/6	ESCAPADA	A MEXICAN ELOPEMENT	4/-
STEP OUT QUICK-MARCH	2/6	JEALOUSY	DANSE APPASSIONATA	2/6
I'M SAVING THE LAST WALTZ FOR YOU	2/6	FOLLOW THE BAND		2/6
THE SPINNING WHEEL INTERMEZZO	2/6	LAUGH THRO' LIFE		2/6
"ON WITH THE SHOW" (1938) SELECTION	5/-	GIVE ME YOUR HEART CHANSONETTE		2/6
TEARS IN MY HEART	2/6	LONDON IS SAYING GOODNIGHT		2/6
EMPIRE EXHIBITION MEDLEY	4/-	SWING ALONG QUICK-MARCH		2/6
WHEN GRANNY WORE HER CRINOLINE	2/6	SHAKE HANDS WITH A MILLIONAIRE		2/6
BECAUSE SERENADE	2/6	SMILE WHEN YOU SAY GOODBYE		2/6
SILVER SAILS ON MOONLIT WATERS	2/6	LIVE AND LOVE ANOTHER DAY		2/6
AFTER ALL THESE YEARS	2/6	SOMEWHERE		2/6
MY LOVE FOR YOU	2/6	A SONG IN YOUR HEART		2/6

**COMPARE THE COST OF ABOVE - £3-5-6 PLUS POSTAGE—  
WITH SUBSCRIPTION RATES (POST FREE) BELOW—**

**BRASS BAND £2 - 2 - 0 PER YEAR**

(SIX MONTHS—HALF RATES)

● **EXTRA FREE NUMBERS TO NEW SUBSCRIBERS** ●

WRITE TO

**LAWRENCE WRIGHT MUSIC COMPANY LTD.**

WRIGHT HOUSE, DENMARK STREET, LONDON, W.C.2