

BELLE VUE
ZOOLOGICAL GARDENS, MANCHESTER

SIXTH ANNUAL CHAMPIONSHIP
Brass Band
Marching Contest

AND
Massed Band
Performance

ON THE STADIUM
Sunday, June 22nd, 1947
AT THREE P.M.

Compere and Massed Band Conductor
J. HENRY ILES, Esq., O.B.E.

Promoted by BELLE VUE (Manchester) LTD.

BOARD OF DIRECTORS

H. F. B. ILES, M.A., J.P., Chairman.
E. O. SPENCE, Managing Director.
R. M. DIXON, F.C.R.A., Secretary.
FREDK. A. SCOTT.
W. B. CULLEN, F.C.A.
JOHN KAY.
A. S. HART.

CONTEST MANAGER: FRANK PARKER.

PROGRAMME SIXPENCE



A Competing Band in the Belle Vue Marching Contest.

THE Brass Bands of Britain are a national institution — in entertainment, duty, and ceremony — in gladness or sorrow, or in the cause of charity. They are composed almost entirely of working men, who regard the playing of an instrument as a sacred hobby. The progress of Brass Bands, particularly during the past twenty years, has been one of continual advancement, and a very high standard of musicianship has been attained.

SIXTH ANNUAL CHAMPIONSHIP
BRASS BAND MARCHING CONTEST

★
PROCEDURE

1. Class "B" Contest.
2. Class "A" Contest.
3. Massed Band Performance.
4. Announcement of Prizewinners and Presentation of Trophies.

THE ORDER OF PLAYING is decided by ballot one hour prior to the commencement of the Contest, and Bands will play in the order as drawn.

The musical section is judged *in camera*. Before the draw takes place the adjudicator is sealed in his room—a vantage point from which he can hear everything, but cannot see any of the proceedings.

Patrons will be notified as to which Band is playing by announcement of the number printed opposite each Band's name on the programme, and also by the large number displayed on the Stadium. This applies to both classes.

THE MARCH OF TIME

GET INTO LINE WITH ALL
THE LEADING BANDS

AND SEND YOUR

**INSTRUMENT REPAIRS
SILVER PLATING
GOLD LACQUERING, Etc.**

ALSO ALL

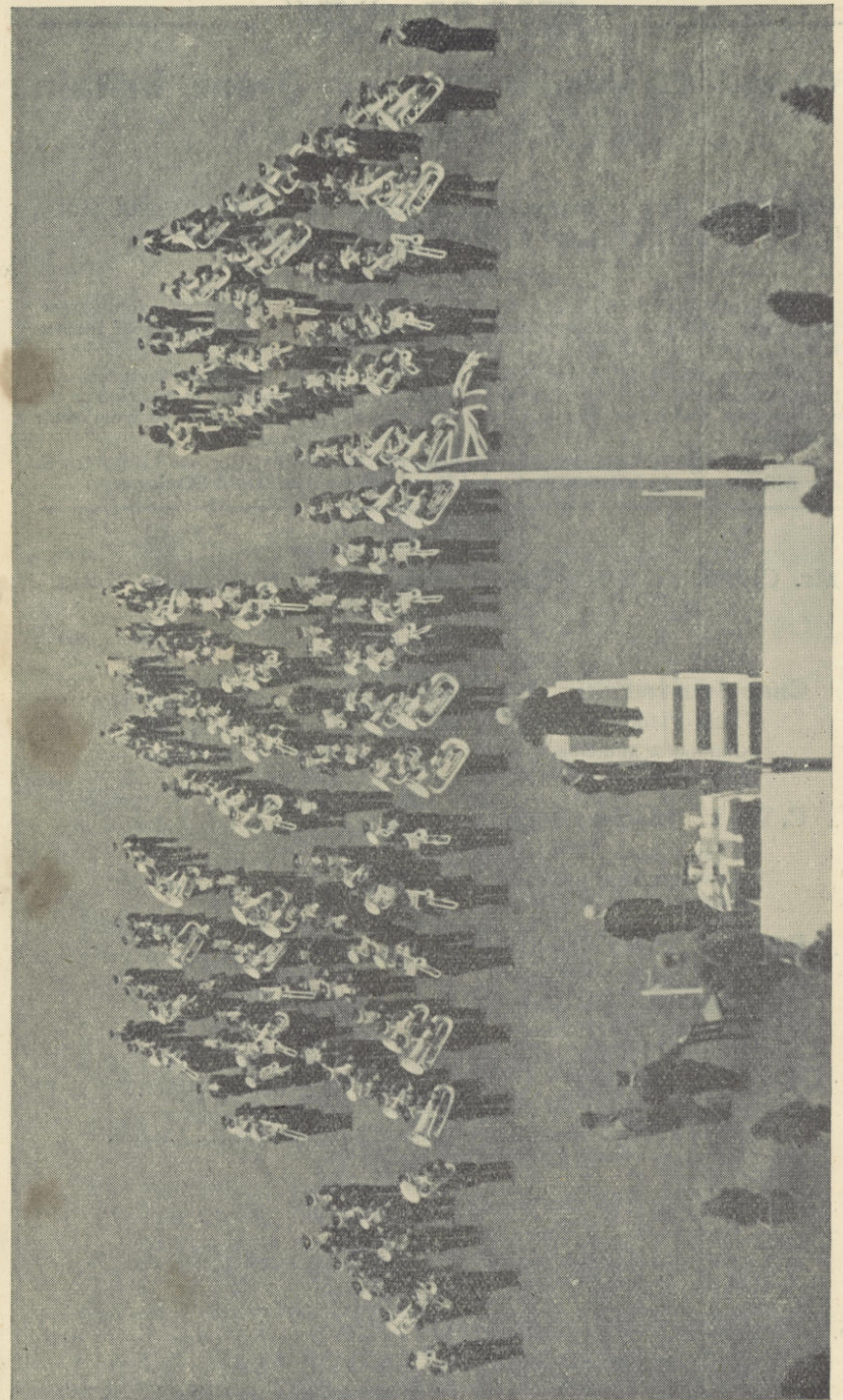
EQUIPMENT FOR THAT DEPARTMENT PRIZE

TO

MAYERS & HARRISON Ltd.

207 to 215, Great Jackson Street, Manchester, 15

TELEPHONE—CENTRAL 3639



Massed Bands on Belle Vue Stadium. Conductor : J. Henry Iles, Esq., O.B.E.

Class "A"

March Championship of Great Britain

Open to all Amateur Bands

PRIZES:

First, The "Iles" Championship Challenge Trophy and £50;
Second, £20; Third, £10; Fourth, £5.

SPECIAL PRIZES:

Messrs. MAYERS & HARRISON, Ltd., 207-215, Great Jackson Street, Manchester, will present, in addition to the 1st Prize, **Silver-plating of Instruments**, to the value of £3.

Messrs. BOOSEY & HAWKES Ltd., Band Instrument Manufacturers and Music Publishers, 295, Regent Street, London, W.1, will present, in addition to the 2nd Prize, a **Parcel of Music** to the value of £2 2s. to be selected from their Catalogue.

Messrs. QUICKFIT PUBLISHING CO., Peel Mills, Clarkes Lane, Rochdale, will present, in addition to the 3rd Prize, a **Parcel of Band Stationery**.

Adjudicator:

Mr. CHAS. A. COOPER, A.Mus.V.C.M., Huthwaite, Notts.

No.	Band	Order of Playing	Points	Result
1.	Chapel-en-le-Frith Town (Derbyshire) Test Piece: "Raby" Conductor and Bandmaster: F. Moss. Secretary: C. Waterhouse.
2.	C. W. S. (Manchester)..... Test Piece: "Brilliant" Conductor and Bandmaster: R. Hesford. Secretary: N. B. Garner.
3.	Fairfield Silver (Buxton) Test Piece: "Raby" Conductor and Bandmaster: J. Fletcher. Secretary: H. Kitchen.
4.	Sheffield Transport Department... Test Piece: "Punchinello" Conductor and Bandmaster: Ralph Williams, L.R.A.M., A.R.C.M. Secretary: Herbert Pemberton.
5.	Slaitwaite (Huddersfield)... Test Piece: "Senator" Conductor and Bandmaster: Milnes Wood. Secretary: S. Garside.
6.	Tintwistle Public (Hadfield) Test Piece: "Pendragon" Conductor: J. M. Hinchliffe. Bandmaster: James Belfield. Secretary: John Leah.

Class "B"

Open to bands that have not won a Cash Prize exceeding £12 at the Belle Vue Contests during the past five years, or have not won a Cash Prize at any Belle Vue Contest.

PRIZES:

First, The "Duckworth" Challenge Trophy and £20;
Second, £10; Third, £5; Fourth, £4.

SPECIAL PRIZES:

Messrs. THOS. REYNOLDS, SENR. & SONS, LTD., 43, Chapel Street, Salford, 3, will present, in addition to the 1st Prize, **Brass Band Fittings** to the value of £2 2s.

Messrs. BESSON & CO., LTD., Frederick Close, Stanhope Place, Marble Arch, London, W. 2, will present, in addition to the 2nd Prize, **Band Music**, to be selected from any Catalogue, **or Accessories**, to the value of £2 2s.

Messrs. JOSHUA DUCKWORTH, LTD., Manifold Printing Works, Colne, will present, in addition to the 3rd Prize, a **Parcel of Music**, value £1 1s.

Adjudicator:

Mr. CHAS. A. COOPER, A.Mus.V.C.M., Huthwaite, Notts.

No.	Band	Order of Playing	Points	Result
1.	Dove Holes Public (Buxton) Test Piece: "Honest Toil" Conductor and Bandmaster: G. W. Hill. Secretary: C. Marshall.
2.	Gorton & Openshaw Old Silver (Manchester) Test Piece: "The Pathfinder" Conductor and Bandmaster: W. H. Phillips. Secretary: A. Thompson.
3.	Hammond's Sauce Works (Shipley, Yorks.) Test Piece: "Victor's Return" Conductor: H. B. Hawley. Bandmaster: Walter Mann. Secretary: H. B. Hawley.
4.	Hugh Stevenson & Sons Ltd. (Manchester) Test Piece: "Conqueror" Conductor: D. Power. Bandmaster: S. Wood. Secretary: W. Wood.
5.	Whaley Bridge Public (Derbyshire) Test Piece: "Monarch" Conductor: F. Wood. Bandmaster: J. B. Gregson. Secretary: Dennis Mackey.

TEAS AND LIGHT REFRESHMENTS

can be obtained in the Gardens at the conclusion of the proceedings

DEPARTMENT SECTION

For all Bands in both classes.

PRIZES:

First, The "Boosey & Hawkes" Challenge Trophy and £8;
Second, £5; Third, £4; Fourth, £3.

THE UNIFORM CLOTHING & EQUIPMENT Co., Ltd., 10-11, Clerkenwell Green, London, E.C.1, will present, in addition to the 1st Prize, a **Bandmaster's Cap.**

Adjudicators:

Lieut.-Colonel C. RILEY (C.L.B.)
Major H. E. BEWSHER (C.L.B.)

1st	Points.....
2nd.....	Points.....
3rd.....	Points.....
4th.....	Points.....

MASSED BAND PERFORMANCE

250 PERFORMERS

Conductor: J. HENRY ILES, Esq., O.B.E.



PROGRAMME

MARCH "Conqueror" *Moorhouse*
A "Champion" March of the best type.

HYMN "Nearer my God to Thee" *Sullivan*

Nearer, my God, to Thee, Nearer to Thee. E'en though it be a cross That raiseth me, Still all my song would be, Nearer, my God, to Thee, Nearer to Thee.	Or if on joyful wing Cleaving the sky, Sun, moon, and stars forgot, Upwards I fly, Still all my song shall be, Nearer, my God, to Thee, Nearer to Thee. Amen.
--	---

EN'TRACT "Largo" *Handel*
This grand music sounds at its best when played by massed brass bands.

MARCH "March Medley No. 1."
Introduces some of the most famous and popular of the "Champion" Journal Marches.

CHORALE ... "Hymn of Praise and Thanksgiving" *Iles*
The first performance of this Chorale was given by the massed bands at the Royal Albert Hall at the National Band Festival last October.

Oh God of grace and might, Thee we adore and praise,
Thy love is infinite, and lovely are Thy ways.
Thy works are strange and strong, and hold us in amaze!
To Thee our love and thanks belong, and all our praise!

Let music with a mighty chord
Honour our great and glorious Lord,
And let grand harmonies proclaim
The grace and merit of His Name.

Let singing with its clearest note
Render His praise in ev'ry throat,
And high-born melodies of sound
In ev'ry grateful heart be found.

So shall a hymn of praise rise over land and sea,
And tune our earth-bound days to Heaven's harmony;
Thus in true concord bound our souls shall cleave to Thee
Who art the Music of the spheres Eternally.

Amen.

HYMN "Onward Christian Soldiers" *Sullivan*

The two famous Hymns included in this programme are by Sir Arthur Sullivan. Sir Arthur who, by so many, was considered the greatest British Composer, was a warm friend of our brass bands and his last performance in public was the Conducting of the Massed Bands at the Crystal Palace in 1900.

Onward, Christian soldiers,
Marching as to war,
With the Cross of Jesus
Going on before.
Christ the Royal Master,
Leads against the foe,
Forward into battle
See His banners go.

Like a mighty army
Moves the Church of God.
Brothers, we are treading
Where the Saints have trod.
We are not divided,
All one Body we,
One in hope and doctrine,
One in charity.

Onward, Christian soldiers,
Marching as to war,
With the Cross of Jesus
Going on before.

Onward, Christian Soldiers,
Marching as to war,
With the Cross of Jesus
Going on before.

Announcement of Awards

Presentation of Trophies by J. HENRY ILES, Esq., O.B.E.

The proceedings will close with "God Save the King" played by the massed bands, in which the audience is requested to join in singing the words.

March to the Old Firm

AND

SEE OUR STOCK OF
NEW BESSON, BOOSEY
& HAWKES INSTRUMENTS

Your old instrument taken in part exchange
ALL ACCESSORIES IN STOCK

THOS. REYNOLDS Senr. & Sons Ltd.

43, CHAPEL STREET, SALFORD 3. (Manchester). OUR ONLY ADDRESS

Phone.—BLAckfriars 5530.

ESTABLISHED OVER 60 YEARS.